

Mint Condition Office Space, Vehicle Storage and Maintenance Facility



9,065 square feet of
office and vehicle
maintenance bays



Stacker Details
23 three level
stackers that can
hold 69 small trucks,
buses, vans and cars

230 EAST 128TH STREET

SOUTHWEST CORNER OF SECOND AVENUE, NEW YORK, NY 10035

Mint Condition Office Space, Vehicle Storage and Maintenance Facility



230 EAST 128TH STREET

SOUTHWEST CORNER OF SECOND AVENUE, NEW YORK, NY 10035

Mint Condition Office Space, Vehicle Storage and Maintenance Facility



Maximum Vehicle Dimensions

Grade & Lower Platform

Width: 8'6"

Length: 22'

Height: 10'

Wheel Base: 14'

Weight: 10,000 lbs

Top Platform:

Width: 8'6"

Length: 22'

Height: 10'

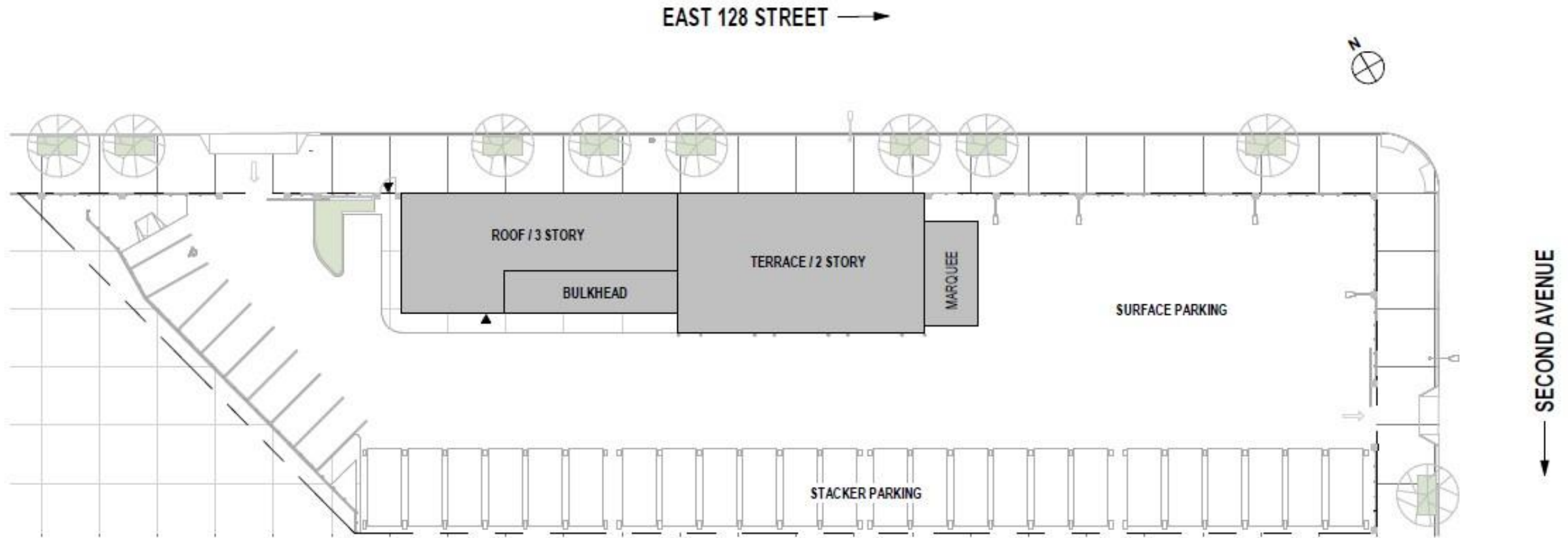
Wheel Base: 14'

Weight: 10,000 lbs

230 EAST 128TH STREET

SOUTHWEST CORNER OF SECOND AVENUE, NEW YORK, NY 10035

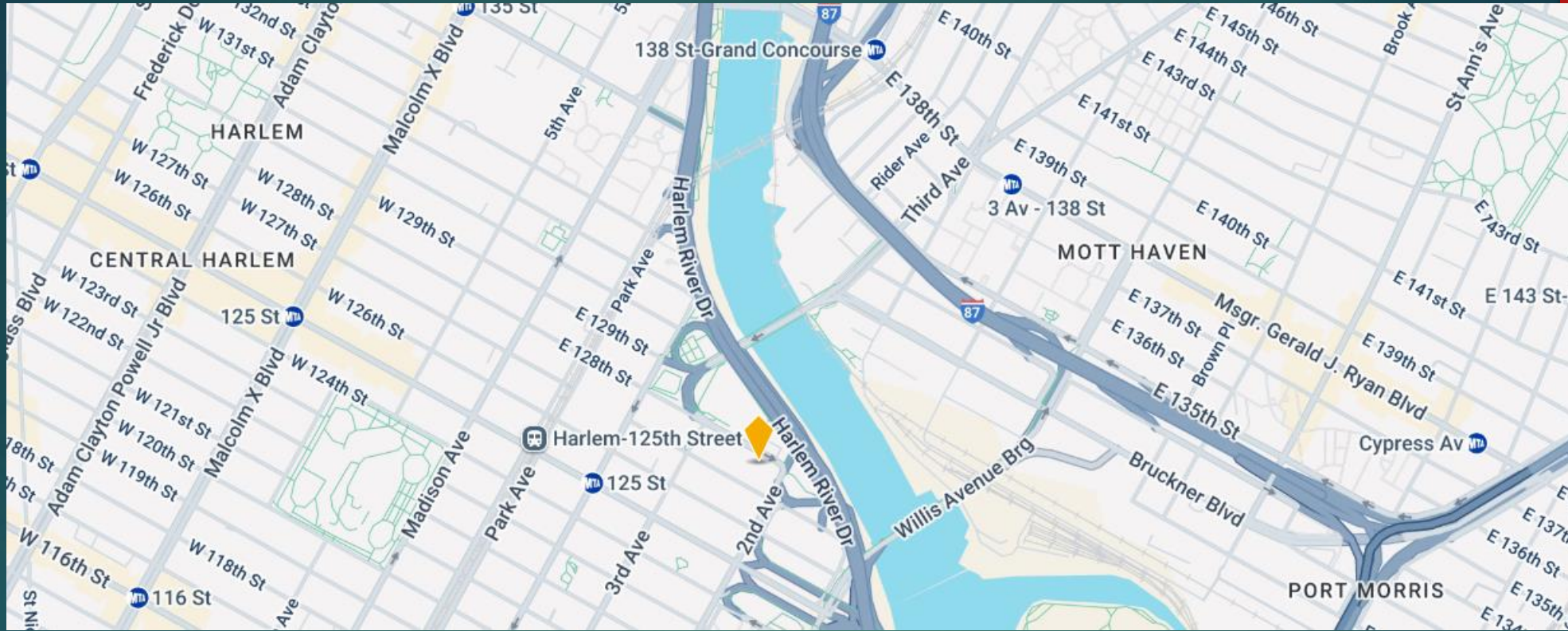
Mint Condition Office Space, Vehicle Storage and Maintenance Facility



230 EAST 128TH STREET

SOUTHWEST CORNER OF SECOND AVENUE, NEW YORK, NY 10035

Mint Condition Office Space, Vehicle Storage and Maintenance Facility



FOR MORE INFORMATION, PLEASE CONTACT:

CHERYL REEMAN

212 445 1229

cheryl.reeman@jrtrealty.com

TAYLOR SMITH

212 445 1235

taylor.smith@jrtrealty.com

GREG SMITH

212 445 1239

greg.smith@jrtrealty.com

JODI PULICE

212 445 1238

jodi.pulice@jrtrealty.com

230 EAST 128TH STREET

SOUTHWEST CORNER OF SECOND AVENUE, NEW YORK, NY 10035

