

Tiger Crossing Retail Center

Northwest Corner of E. Albany & County Line Rd. Broken Arrow

Contact

Steve Walman	918-481-8888	steve@walmancommercial.com
Justin Brown	918-481-8888	justin@walmancommercial.com
Candice Swim	918-481-8888	candice@walmancommercial.com

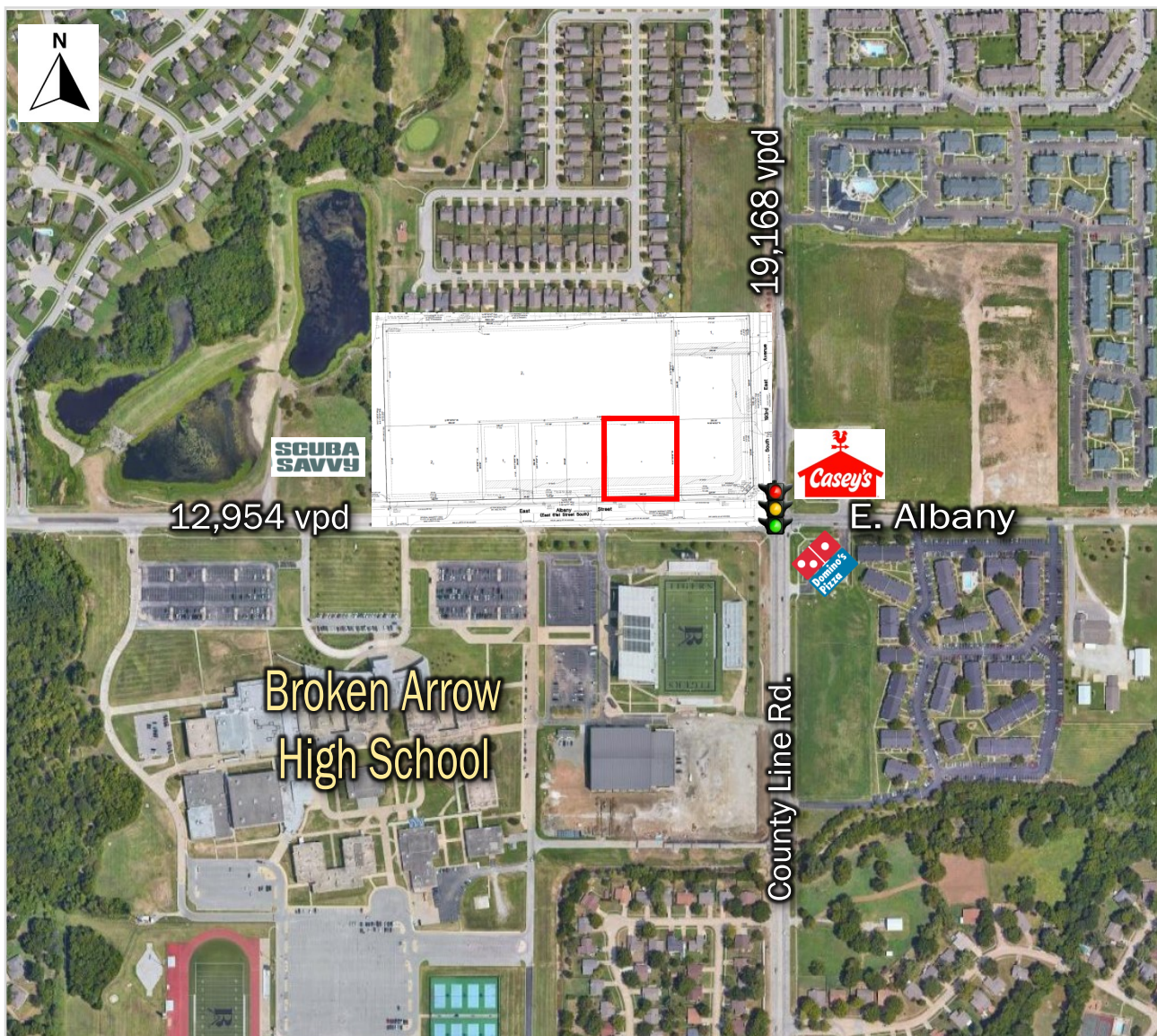


Highlights

- Located on the signalized intersection of E. Albany and County Line Rd., directly across from Broken Arrow High School.
- Broken Arrow High School is the largest high school in Oklahoma with over 4,400 students.
- Average Household income over \$100,000 within 3 miles of the site.
- High-growth area of Broken Arrow with multiple new single family developments nearby.
- Immediate trade area features Casey's, Domino's, Whataburger, Lowe's, Target, Cinemark Theater, Ross, Marshalls and many more.
- 1,950 - 3,450 SF Drive Thru end cap available
- 1,500 SF in line spaces available
- Multiple access points from E. Albany and County Line Rd.

Demographics

	1 mile	3 miles	5 miles
Population:	7,326	53,610	124,239
Households:	2,887	20,422	46,410
Avg. H.H. Income:	\$90,242	\$105,776	\$103,953
County Line	19,168 vpd		
E. Albany	12,954 vpd		



Tiger Crossing Retail Center

Northwest Corner of E. Albany & County Line Rd. Broken Arrow

Contact

Steve Walman	918-481-8888	steve@walmancommercial.com
Justin Brown	918-481-8888	justin@walmancommercial.com
Candice Swim	918-481-8888	candice@walmancommercial.com



- High-demand trade area anchored by numerous national retailers and restaurants.
- Broken Arrow High School, Creekwood Elementary and BA Vanguard Academy all located within 1/2 mile of the site.
- 468 single family housing permits issued for Broken Arrow Jan—Aug 2024.

All statements herein are for informational purposes only and are believed to be reliable; however, no warranty or representation is made to the accuracy thereof and the same is submitted subject to errors, omissions, change of price, terms, conditions and prior sale or lease.

Tiger Crossing Retail Center

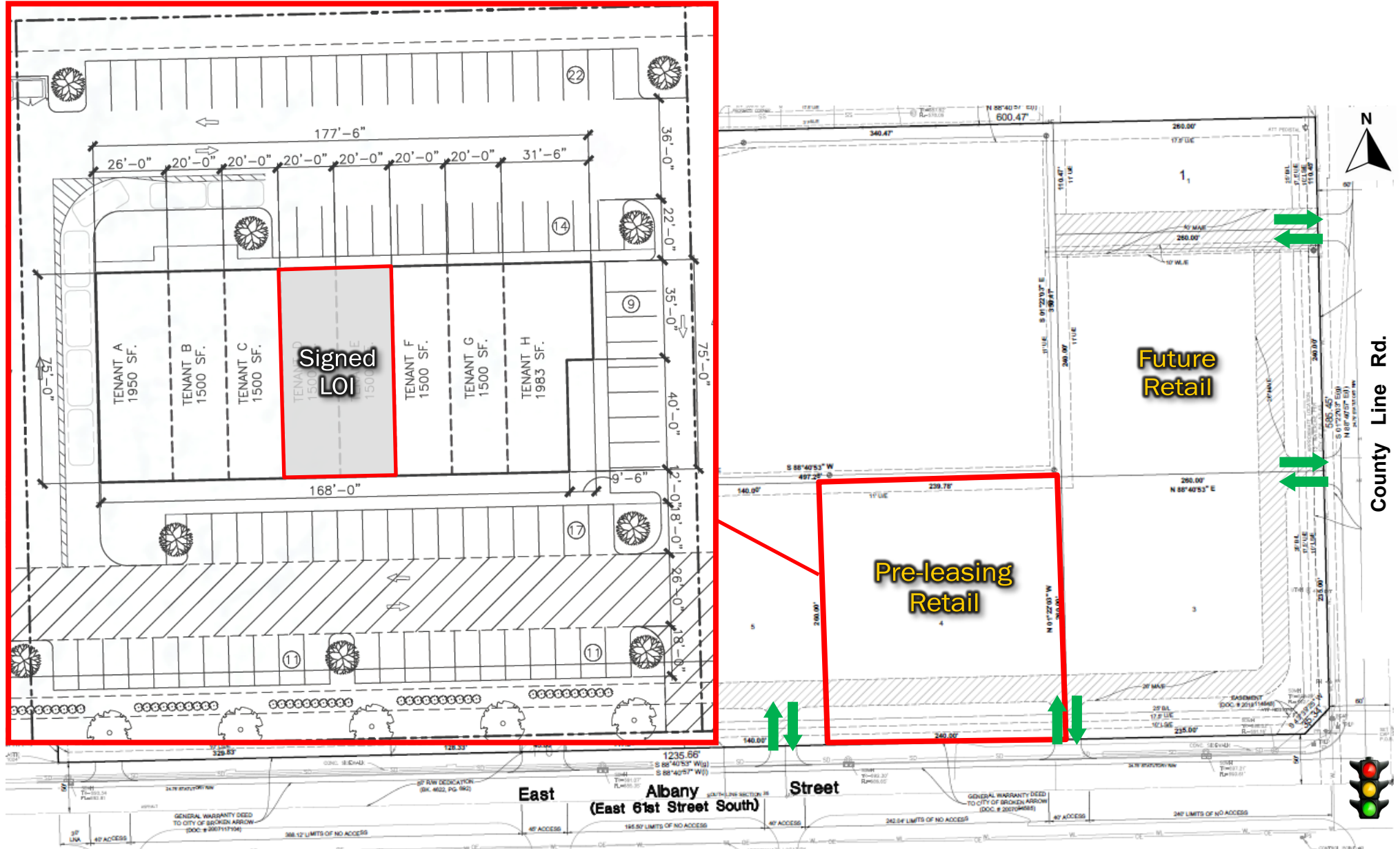
Northwest Corner of E. Albany & County Line Rd. Broken Arrow

Contact

Steve Walman 918-481-8888
Justin Brown 918-481-8888
Candice Swim 918-481-8888



steve@walmancommercial.com
justin@walmancommercial.com
candice@walmancommercial.com



All statements herein are for informational purposes only and are believed to be reliable; however, no warranty or representation is made to the accuracy thereof and the same is submitted subject to errors, omissions, change of price, terms, conditions and prior sale or lease.