



For sublease

Turn-key office opportunity
available at Aurora Business
Park - Building 1 in Urbandale

15,250 RSF

11027-11035 NW Aurora Avenue
Urbandale, Iowa 50322

Property overview

Sublease availability: 15,250 RSF

- Now available
- Lease expiration: 11/30/2026

Lease rate: \$8.52-8.69 RSF NNN

Est. OPEX: Available upon request

- Updated office space includes private offices, conference space, kitchenette area, and open office
- Ample parking
- Easy interstate access with park amenities: fitness center, training center & conference room
- Potential for some furniture to be included in sublease

Justin Lossner, CCIM, SIOR
Senior Managing Director
Justin.Lossner@jll.com
+1 515 371 0846

Abi Reiland
Senior Associate
Abi.Reiland@jll.com
+1 515 499 8679

jll.com/des-moines
Jones Lang LaSalle Americas, Inc.

Floor plan

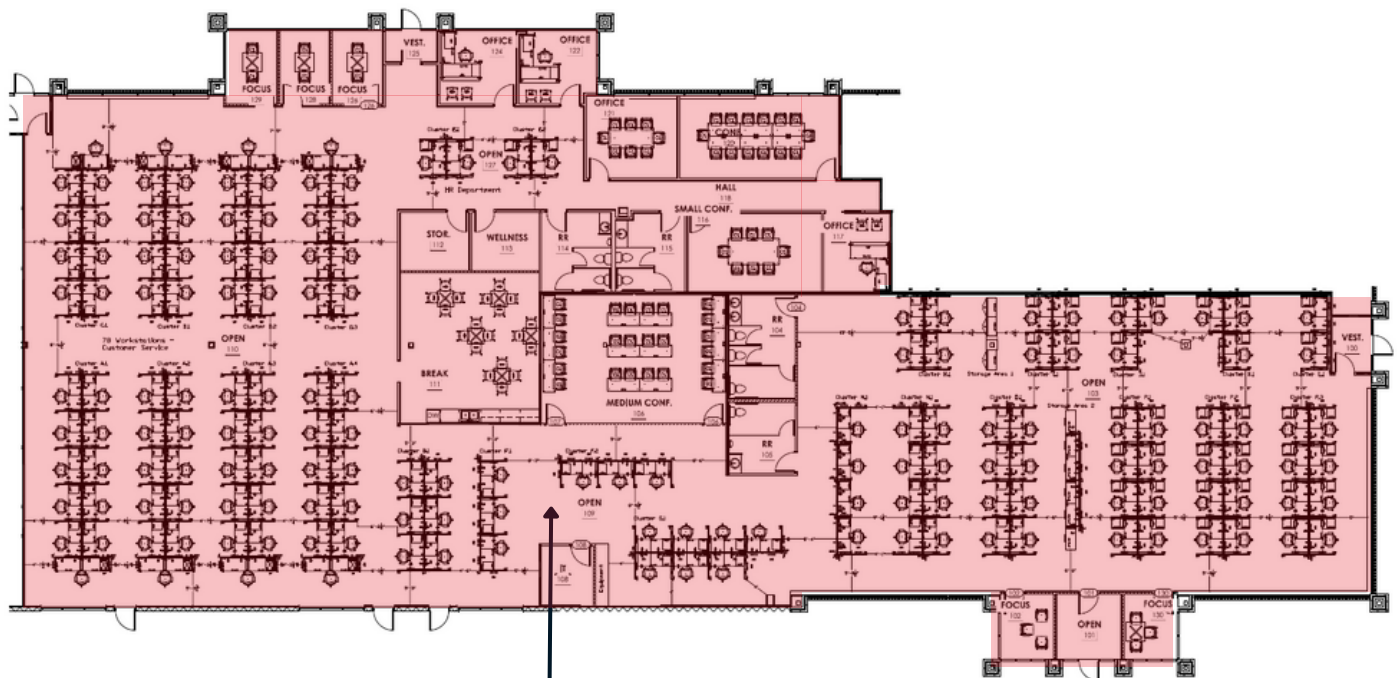
Sublease availability: 15,250 RSF

- Now available
- Lease expiration: April 2027

Lease rate: \$8.52-8.69 RSF NNN

Est. OPEX: Available upon request

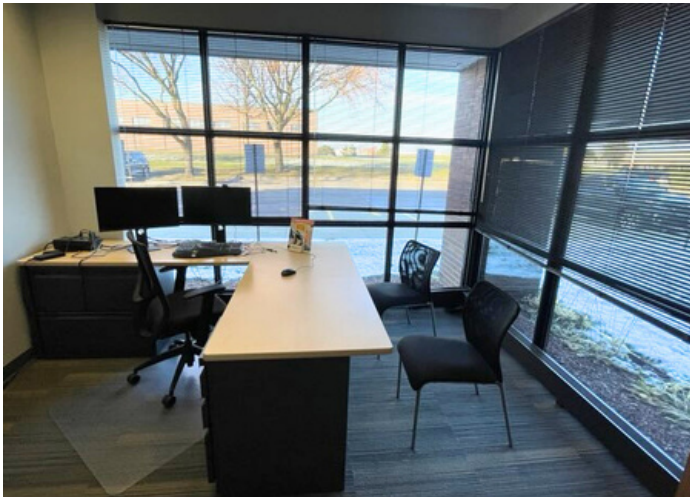
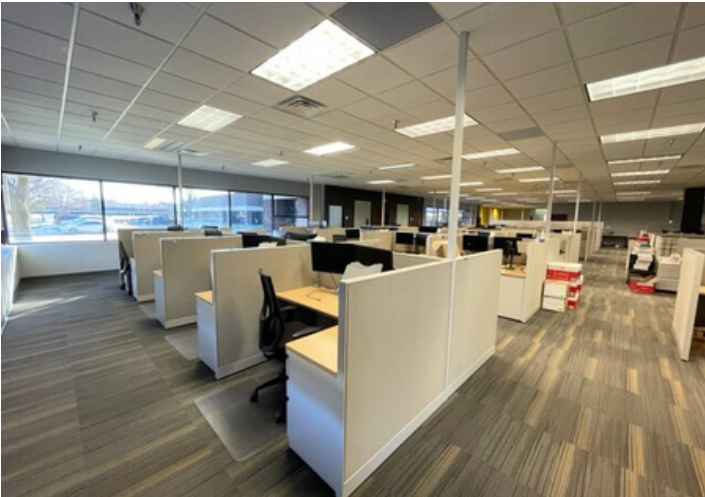
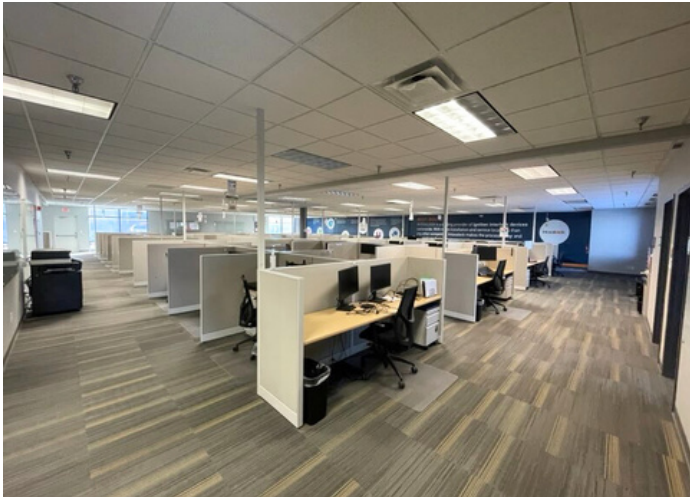
Front entrance



15,250 RSF

Sublease available

Images



For sublease

11027-11035 NW Aurora Avenue | Urbandale, Iowa 50322



Justin Lossner, CCIM, SIOR
Senior Managing Director
Justin.Lossner@jll.com
+1 515 371 0846

Abi Reiland
Senior Associate
Abi.Reiland@jll.com
+1 515 499 8679

jll.com/des-moines
Jones Lang LaSalle Americas, Inc.

