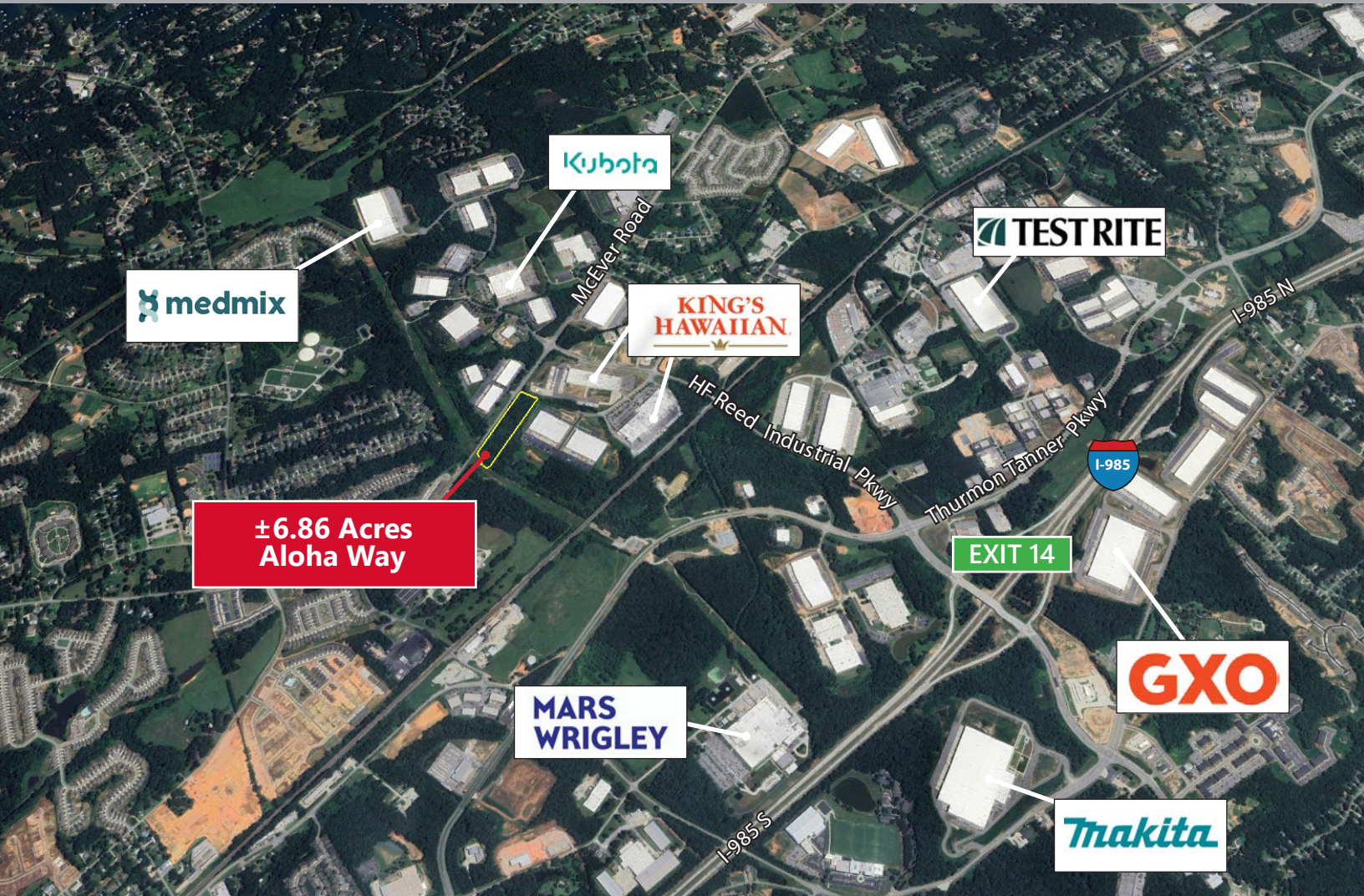




For Sale
±6.86 Acres
Hall County

PROPERTY OVERVIEW

Aloha Way | Oakwood, GA 30566



PROPERTY FEATURES:

±6.86 acres for sale in Oakwood South Industrial Park

Commercial site with high visibility on McEver Rd.

Potential for ±30,000 - 60,000 sq. ft. shallow bay or flex warehouse building

Traffic Count of 12,000 VPD in 2024

±1.5 miles to I-985, Exit 14

Great option in the growing South Hall corridor



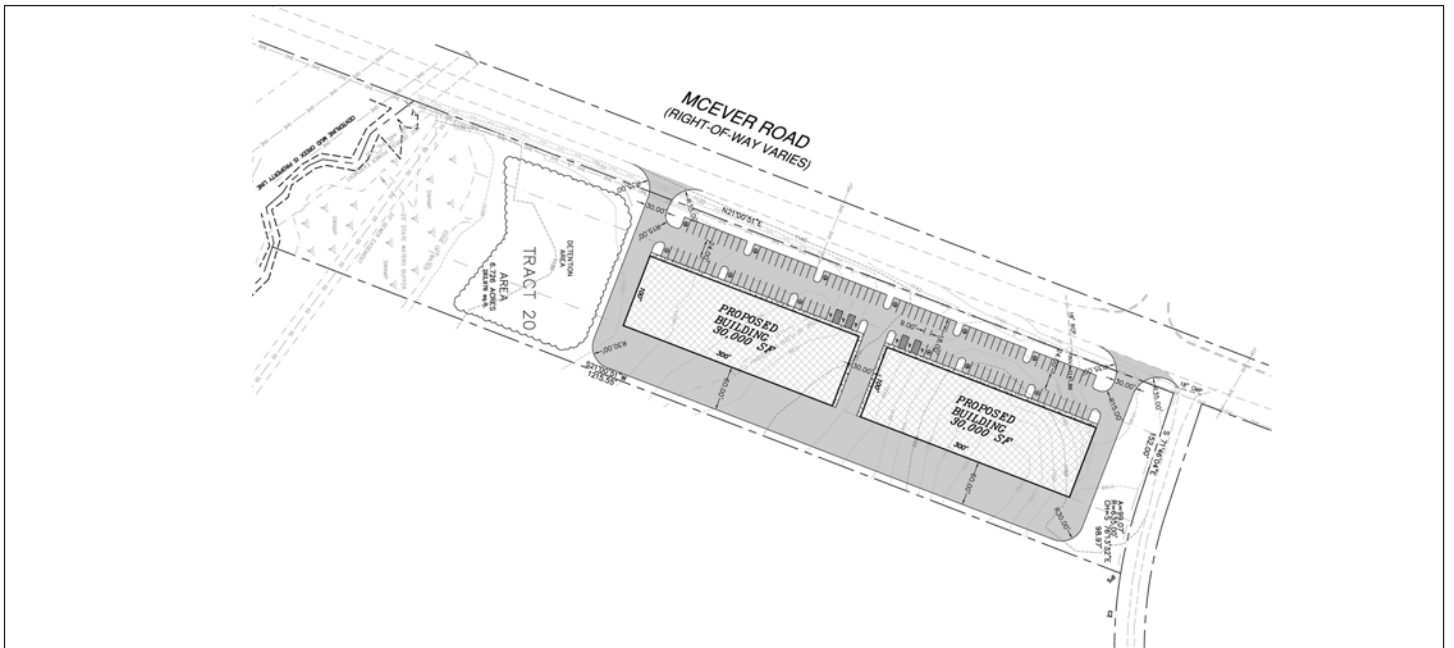
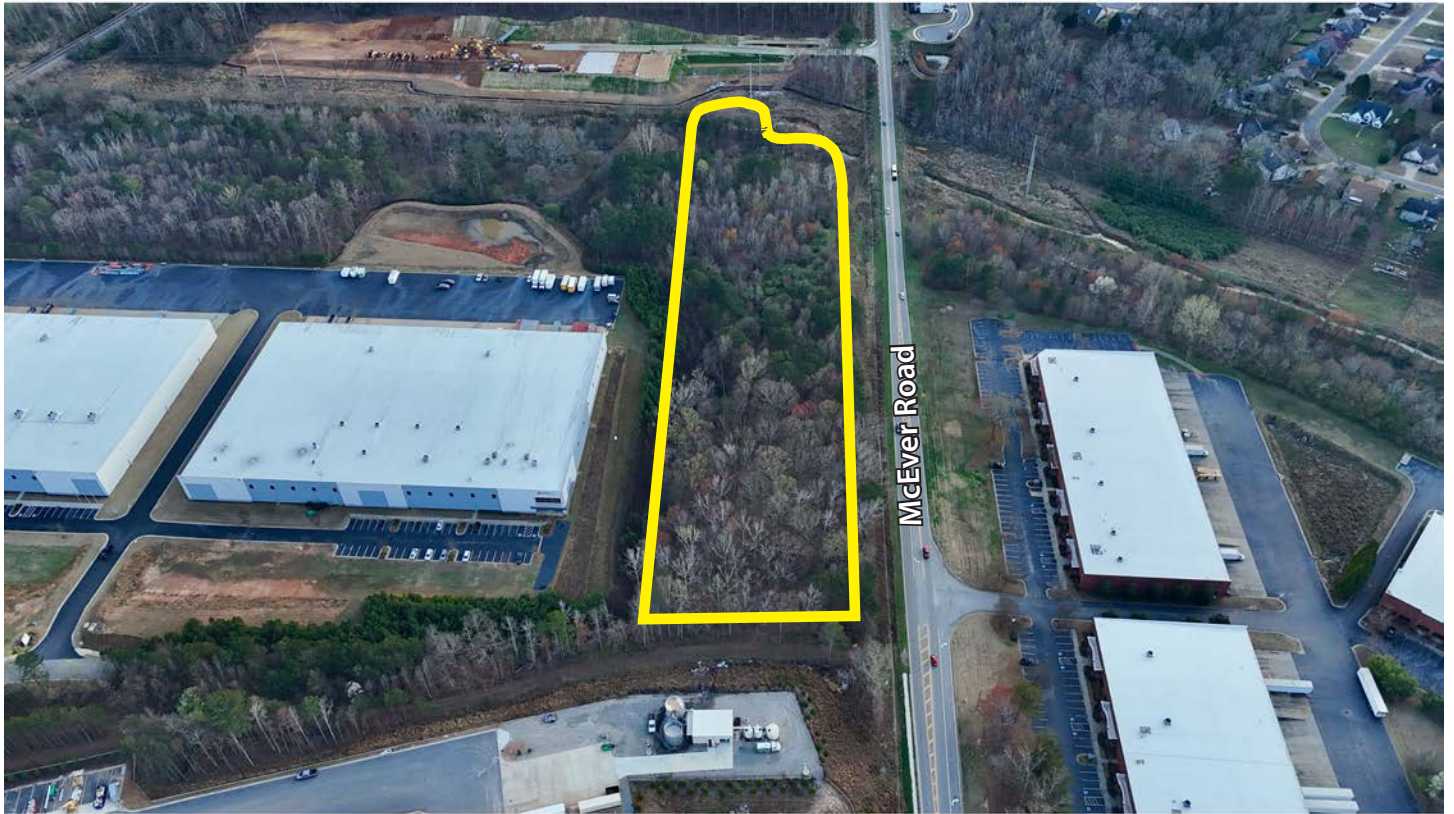
Drew C. Addison, SIOR
daddison@ipgproperties.com
678.316.2409 (cell)
770.536.6555 x 232 (office)

Floyd H. Baldwin, SIOR
fbaldwin@ipgproperties.com
770.287.5288 (cell)
770.536.6555 x 222 (office)

Palmer H. Loggins
ploggins@ipgproperties.com
770.561.3751 (cell)
770.536.6555 x 234 (office)

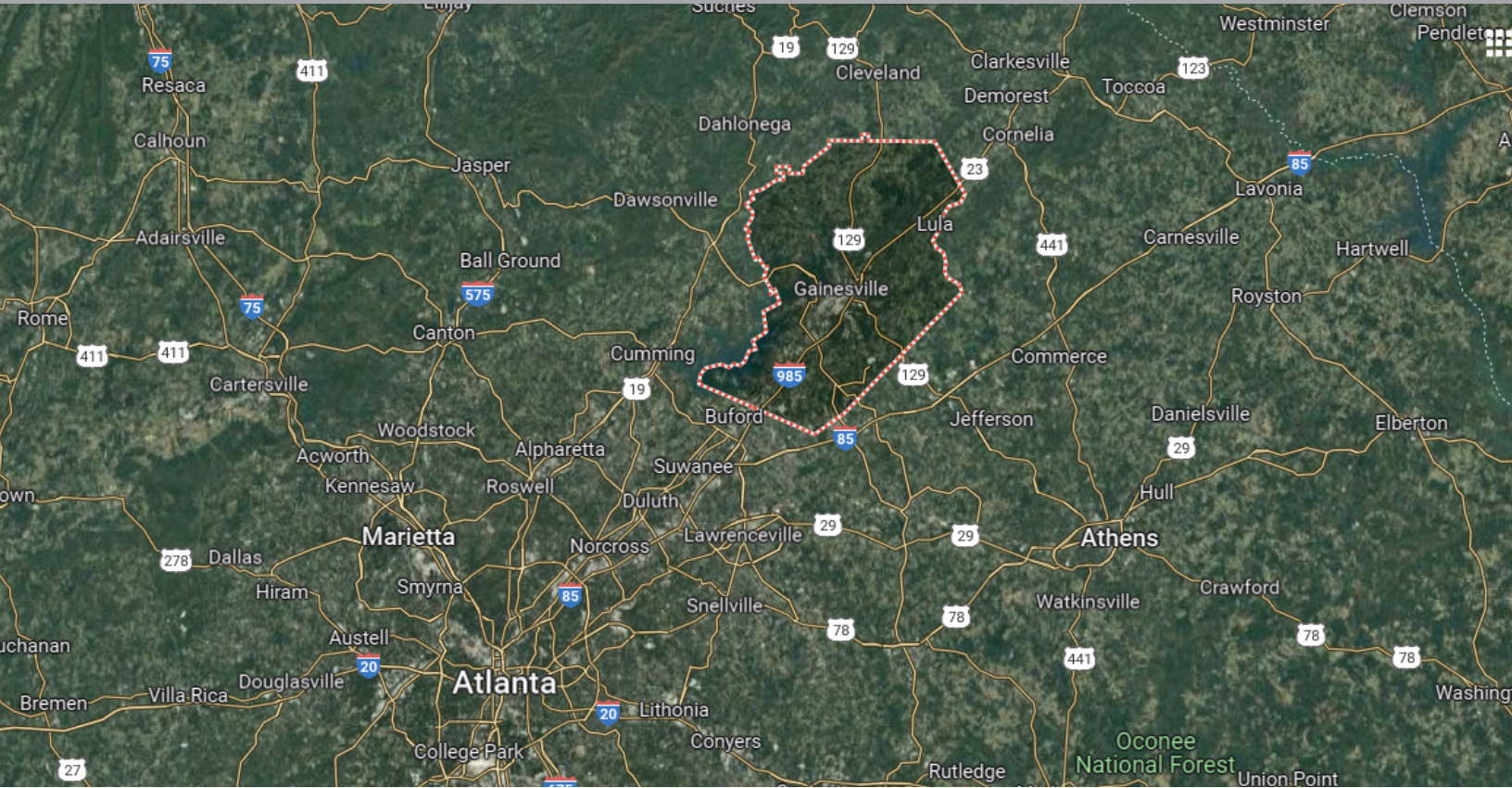
AERIAL

Aloha Way | Oakwood, GA 30566



LOCATION DETAILS

Aloha Way | Oakwood, GA 30566



ABOUT HALL COUNTY:

Hall County is the epicenter of an aggressive economic environment in Northeast Georgia. Growth in both population, now estimated at 222,000, and economic bases has been steady and diversified for the last 20 years. The labor market is thriving with regional labor market numbers estimated to be 775,000 from Hall and surrounding counties.

DISTANCES:

I-985, Exit 20:	±2.0 miles	Downtown Atlanta:	±47.5 miles
I-85:	±15.4 miles	Hartsfield Jackson Int'l Airport:	±57.4 miles
I-285:	±33.2 miles	Gainesville Inland Port:	±16.3 miles
Downtown Gainesville:	±8.7 miles	Inland Port Greer (SC):	±125 miles
City of Oakwood:	±2.4 miles	Port of Savannah:	±248 miles

Drew C. Addison, SIOR

daddison@ipgproperties.com
678.316.2409 (cell)
770.536.6555 x 232 (office)

Floyd H. Baldwin, SIOR

fbaldwin@ipgproperties.com
770.287.5288 (cell)
770.536.6555 x 222 (office)

Palmer H. Loggins

ploggins@ipgproperties.com
770.561.3751 (cell)
770.536.6555 x 234 (office)

