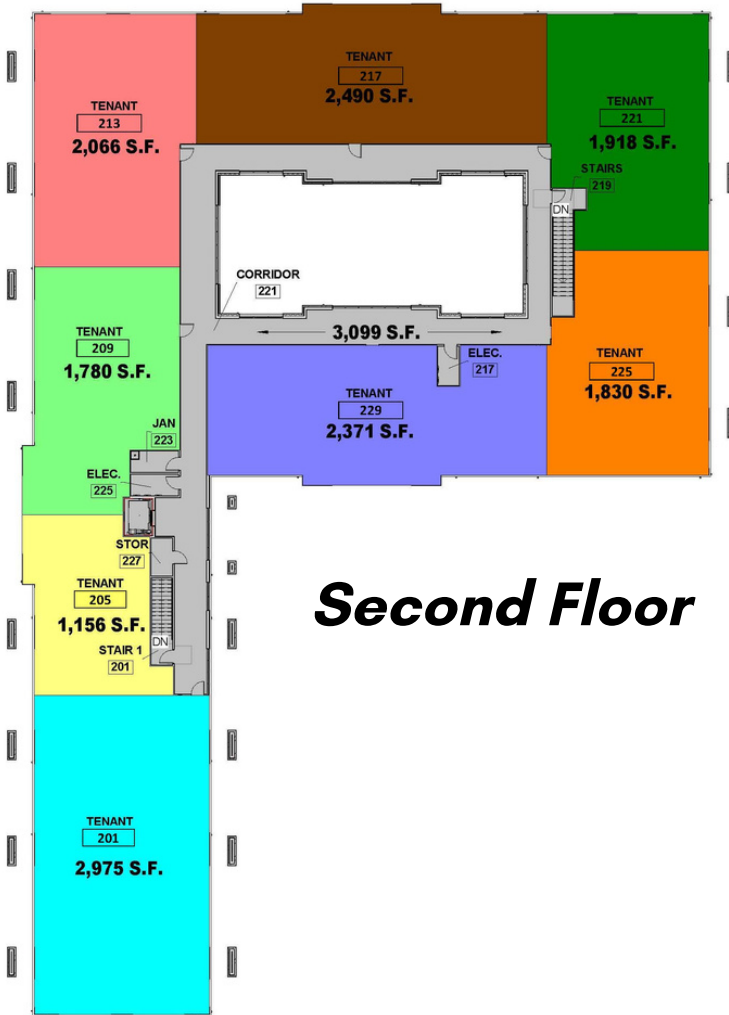
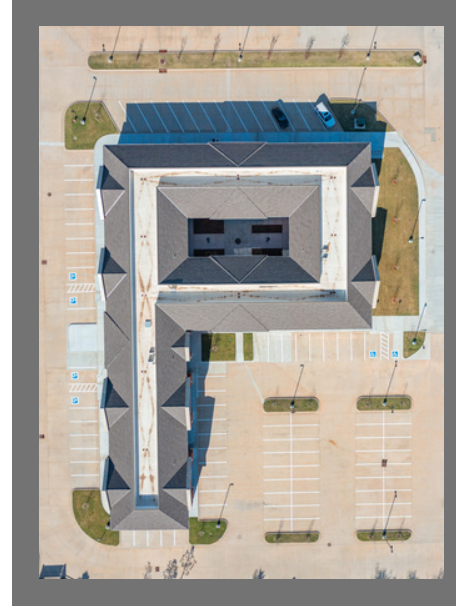


36 North

2751 36th Ave NW
Norman, OK 73072



Second Floor



Property Detail:

(Upstairs Availability)*

Note: All suites are cold gray shell & can be combined for larger square footage

- Suite 201: 2,975 SF
- Suite 205: 1,156 SF
- Suite 209: 1,780 SF
- Suite 213: 2,066 SF
- Suite 217: 2,490 SF
- Suite 221: 1,918 SF
- Suite 225: 1,830 SF
- Suite 229: 2,371 SF

Rental rate: Call for pricing

Additional Information:

- Easily access the second floor by elevator or two available staircases.
- Parking available around entire perimeter of building.
- Available pylon signage (one space per suite)
- Tenant Improvement Allowance available for gray shell space
- Large windows throughout all suites overlooking Norman