

FOR LEASE OFFICE BUILDING



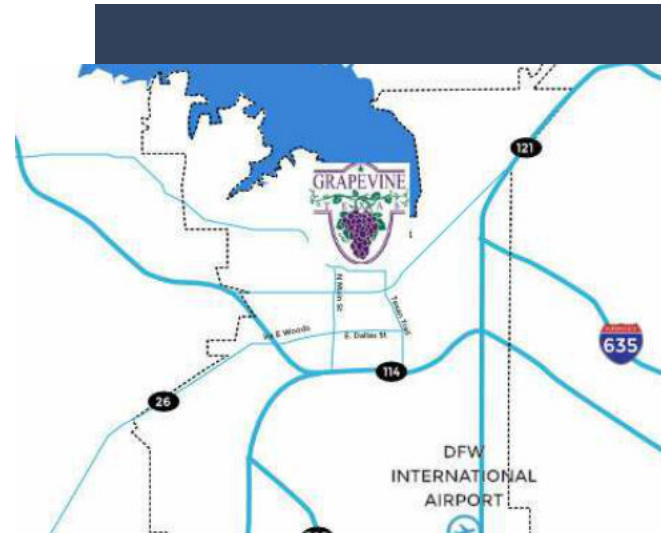
1235-1245 S MAIN STREET, GRAPEVINE, TX 76051



PROPERTY HIGHLIGHTS

- ±1,500 - 3,699 SF
- Professional Office Space
- Move-In Ready
- Convenient location to Historic Grapevine shopping district
- Walkable to restaurants
- Monument Signage
- Minutes to DFW Int'l Airport
- Located off S Main Street and SH 114

LEASE RATE \$24 - 28 SF/YR | GROSS + E



CONTACT INFORMATION

JIM KELLEY

Office: 817.488.4333
Cell: 817.909.7875
jim@championsdfw.com

ERIC GOODWIN

Office: 817.488.4333
Cell: 214.642.8928
eric@championsdfw.com

GRANT GOODWIN

Office: 817.488.4333
Cell: 972.632.9608
grant@championsdfw.com

Champions DFW Commercial Realty

1725 E Southlake Blvd, Suite 100, Southlake, TX 76092

©2023 Champions DFW Commercial Realty LLC.

All rights reserved. The information contained herein was obtained from sources believed to be reliable. It is subject to verification. The presentation of this property is submitted subject to errors, omissions, change of price or conditions, prior to sale or lease, or withdrawal without notice

FOR LEASE OFFICE BUILDING

1235-1245 S MAIN STREET, GRAPEVINE, TX 76051

1235 S MAIN - SUITE 150



Confidential | For Discussion Purposes Only | Limited to Distribution | Subject to NDA

Champions DFW Commercial Realty

1725 E Southlake Blvd, Suite 100, Southlake, TX 76092

©2023 Champions DFW Commercial Realty LLC.

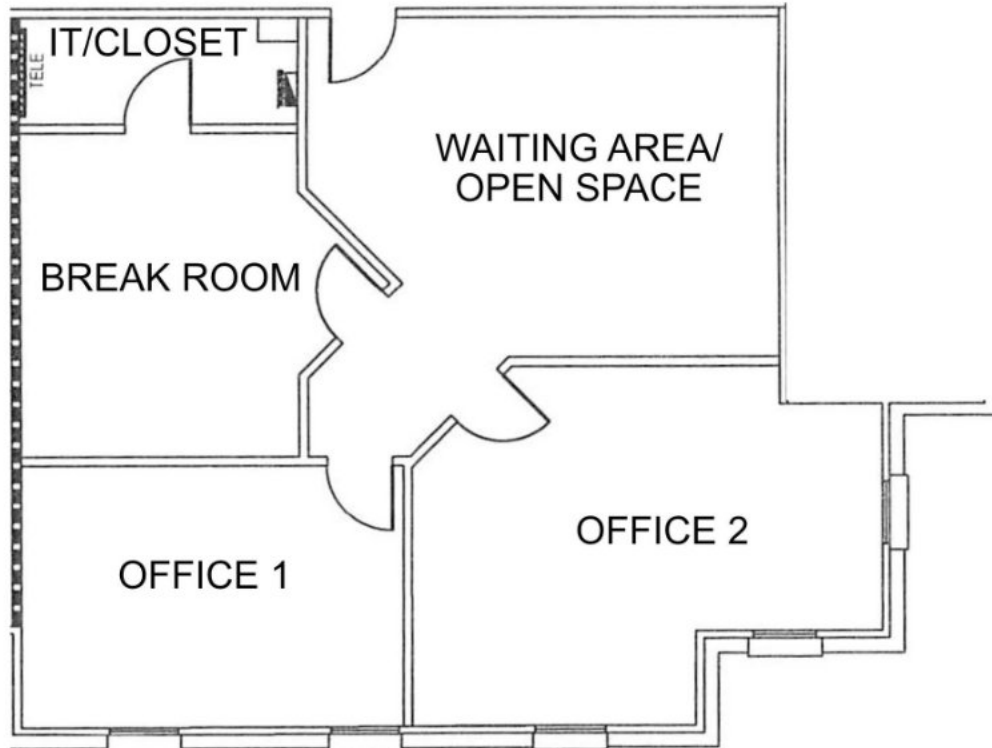
All rights reserved. The information contained herein was obtained from sources believed to be reliable. It is subject to verification. The presentation of this property is submitted subject to errors, omissions, change of price or conditions, prior to sale or lease, or withdrawal without notice.

FOR LEASE
OFFICE BUILDING



1235-1245 S MAIN STREET, GRAPEVINE, TX 76051

1235 S MAIN - SUITE 260



Champions DFW Commercial Realty

1725 E Southlake Blvd, Suite 100, Southlake, TX 76092

©2023 Champions DFW Commercial Realty LLC.

All rights reserved. The information contained herein was obtained from sources believed to be reliable. It is subject to verification. The presentation of this property is submitted subject to errors, omissions, change of price or conditions, prior to sale or lease, or withdrawal without notice

FOR LEASE OFFICE BUILDING



1235-1245 S MAIN STREET, GRAPEVINE, TX 76051

LEASE SPACES

LEASE INFORMATION

Lease Type:	Gross + E	Lease Term:	36 to 60 months
Total Space:	1,500 - 3,688 SF	Lease Rate:	\$24.00 - \$28.00 SF/yr

AVAILABLE SPACES

SUITE	TENANT	SIZE (SF)	LEASE TYPE	LEASE RATE	
1235 Main Street - Suite 150	Available	3,688 SF	Gross + E	\$24.00 - 28.00 SF/yr	-
1235 Main Street - Suite 260	Available	1,500 SF	Gross + E	\$24.00 - 28.00 SF/yr	-

Champions DFW Commercial Realty

1725 E Southlake Blvd, Suite 100, Southlake, TX 76092

©2023 Champions DFW Commercial Realty LLC.

All rights reserved. The information contained herein was obtained from sources believed to be reliable. It is subject to verification. The presentation of this property is submitted subject to errors, omissions, change of price or conditions, prior to sale or lease, or withdrawal without notice.

FOR LEASE
OFFICE BUILDING



1235-1245 S MAIN STREET, GRAPEVINE, TX 76051

PROPERTY PHOTOS



Champions DFW Commercial Realty

1725 E Southlake Blvd, Suite 100, Southlake, TX 76092

©2023 Champions DFW Commercial Realty LLC.

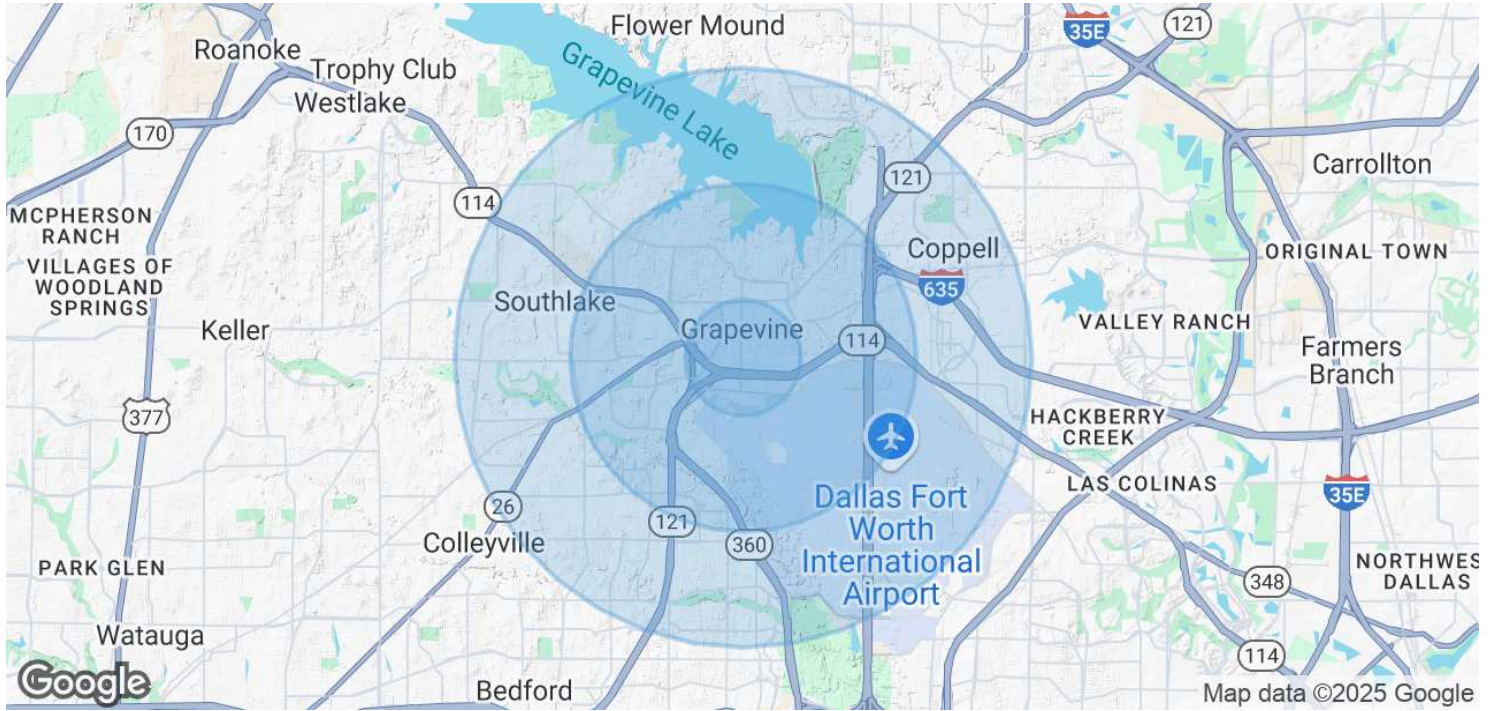
All rights reserved. The information contained herein was obtained from sources believed to be reliable. It is subject to verification. The presentation of this property is submitted subject to errors, omissions, change of price or conditions, prior to sale or lease, or withdrawal without notice

FOR LEASE OFFICE BUILDING



1235-1245 S MAIN STREET, GRAPEVINE, TX 76051

DEMOGRAPHICS MAP & REPORT



POPULATION

	1 MILE	3 MILES	5 MILES
Total Population	4,929	42,767	116,807
Average Age	43	40	41
Average Age (Male)	42	39	40
Average Age (Female)	44	41	41

HOUSEHOLDS & INCOME

	1 MILE	3 MILES	5 MILES
Total Households	2,361	17,336	45,363
# of Persons per HH	2.1	2.5	2.6
Average HH Income	\$123,509	\$147,517	\$180,872
Average House Value	\$555,607	\$557,828	\$641,160

* Demographic data derived from 2020 ACS - US Census

Champions DFW Commercial Realty

1725 E Southlake Blvd, Suite 100, Southlake, TX 76092

©2023 Champions DFW Commercial Realty LLC.

All rights reserved. The information contained herein was obtained from sources believed to be reliable. It is subject to verification. The presentation of this property is submitted subject to errors, omissions, change of price or conditions, prior to sale or lease, or withdrawal without notice

FOR LEASE OFFICE BUILDING



1235-1245 S MAIN STREET, GRAPEVINE, TX 76051

BROKER CONTACTS



JIM KELLEY

Principal/Broker

C: 817.909.7875

jim@championsdfw.com



ERIC GOODWIN

Vice President

C: 214.642.8928

eric@championsdfw.com



GRANT GOODWIN

Sales Associate

C: 972.632.9608

grant@championsdfw.com

Champions DFW Commercial Realty

1725 E Southlake Blvd, Suite 100, Southlake, TX 76092

©2023 Champions DFW Commercial Realty LLC.

All rights reserved. The information contained herein was obtained from sources believed to be reliable. It is subject to verification. The presentation of this property is submitted subject to errors, omissions, change of price or conditions, prior to sale or lease, or withdrawal without notice.



CHAMPIONS[™]
DFW COMMERCIAL REALTY

Champions DFW Commercial Realty

1725 E Southlake Blvd, Suite 100, Southlake, TX 76092

©2023 Champions DFW Commercial Realty LLC.

All rights reserved. The information contained herein was obtained from sources believed to be reliable. It is subject to verification. The presentation of this property is submitted subject to errors, omissions, change of price or conditions, prior to sale or lease, or withdrawal without notice