

# GOLDFINCH DEVELOPMENT LAND

JASPER COUNTY, IOWA

Unique opportunity to purchase transitional farmland on the Western edge of Newton, Iowa. The site currently situated in Jasper County sits on the city limit of Newton and a likely target for annexation into the City of Newton. A city sewer sanitary line currently runs along the West side of the property making for convenient connection. The site offers rolling topography and trees making it ideal for a subdivision featuring privacy lots and views. A concept plan shows 66 lots ranging in size from 0.92 to 3.54 acres large lots great for in town acreages. This land can continued to be farmed or is ready for development. Great for a 1031 exchange or developer who recognized the potential for lot sales in a vibrant bedroom community of Des Moines.

- + **PRICING:**  
NEGOTIABLE, PLEASE CALL  
BROKER
- + **SIZE:**  
97.67 ACRES
- + **ZONING:**  
RESIDENTIAL DISTRICT  
(JASPER CO.)



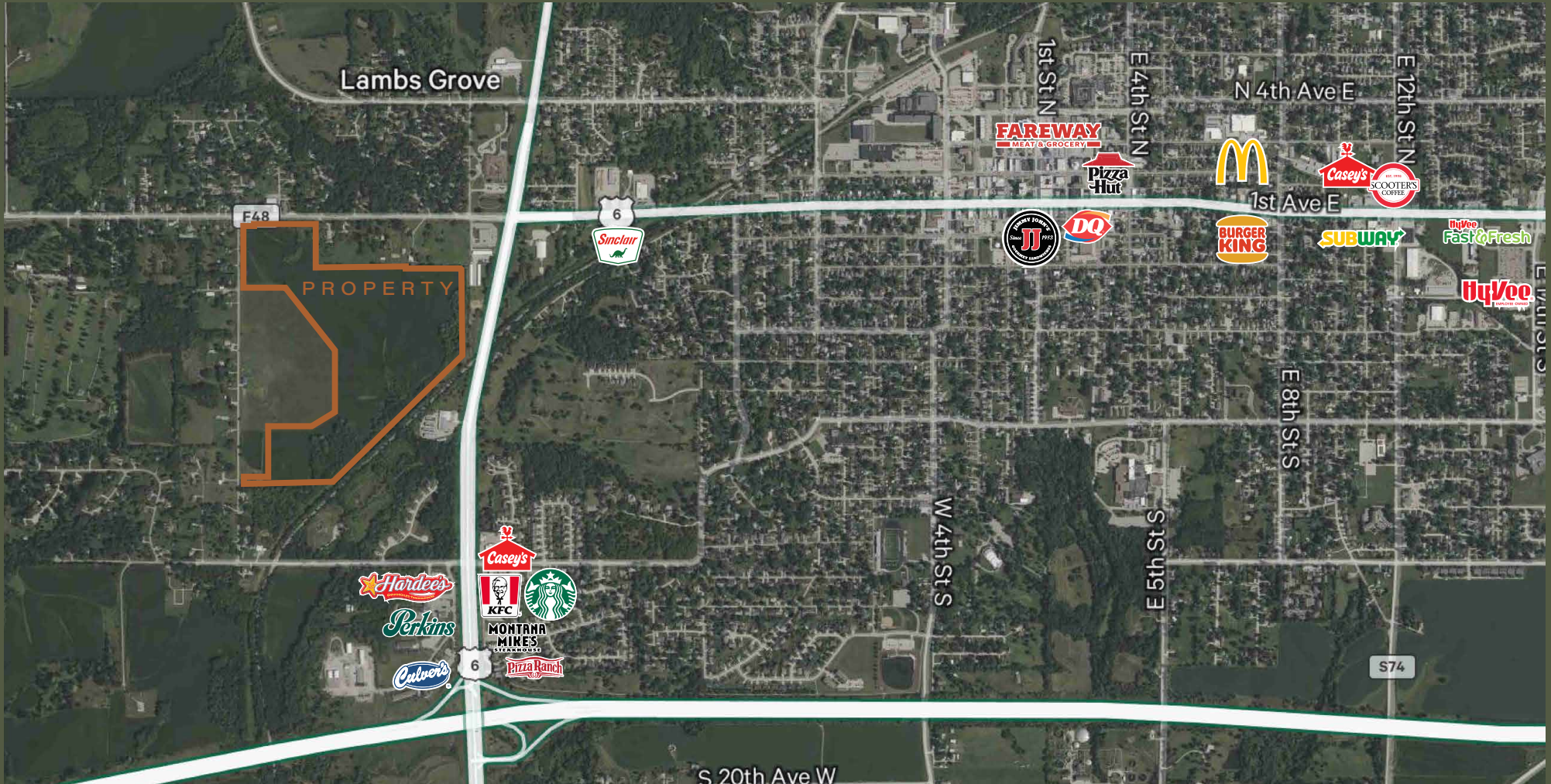






# LOCATION

LAND | FOR SALE



**CHRIS PENDROY, CCIM, SIOR**  
Senior Vice President

+1 515 402 6600  
chris.pendroy@cbre.com

Licensed in the State of Iowa.

**BILL WRIGHT**  
Senior Vice President

+1 515 210 3050  
bill.wright2@cbre.com

Licensed in the State of Iowa.

**GRANT WRIGHT, CCIM**  
First Vice President

+1 515 745 5113  
grant.wright@cbre.com

Licensed in the State of Iowa.

**DAKOTA LITTLE**  
Sales Associate

+1 515 745 4378  
dakota.little@cbre.com

Licensed in the State of Iowa.

© 2024 CBRE, Inc. All rights reserved. This information has been obtained from sources believed reliable but has not been verified for accuracy or completeness. CBRE, Inc. makes no guarantee, representation or warranty and accepts no responsibility or liability as to the accuracy, completeness, or reliability of the information contained herein. You should conduct a careful, independent investigation of the property and verify all information. Any reliance on this information is solely at your own risk. CBRE and the CBRE logo are service marks of CBRE, Inc. All other marks displayed on this document are the property of their respective owners, and the use of such marks does not imply any affiliation with or endorsement of CBRE. Photos herein are the property of their respective owners. Use of these images without the express written consent of the owner is prohibited.

**CBRE**