



7025

7025

7025 LANGER DRIVE

MISSISSAUGA, ON



CUSHMAN &
WAKEFIELD



REALTY
ADVISORS

AUGUST 2024

BUILT OUT SUITE IN MEADOWVALE



Property Highlights

- Net Rent: Contact Listing Agents
- Additional Rent: \$17.79 (2024 Estimate)
- Parking: 4 : 1,000 SF

AVAILABILITIES:

- Suite 200 - **LEASED**
Available: Nov 1, 2024
- **Suite 210 - 10,689sf**
Available: July 1, 2025



BOMA
BEST SILVER



LEED
EB PLATINUM



LEED
CORE & SHELL



BIKE
RACKS



ON-SITE
SHOWERS



INSTITUTIONAL
OWNERSHIP AND
ON-SITE
PROFESSIONAL
MANAGEMENT



OPTIMAL HIGHWAY
ACCESS TO
401,407,403



ABUNDANT FOOD
AMENITIES
IN AREA



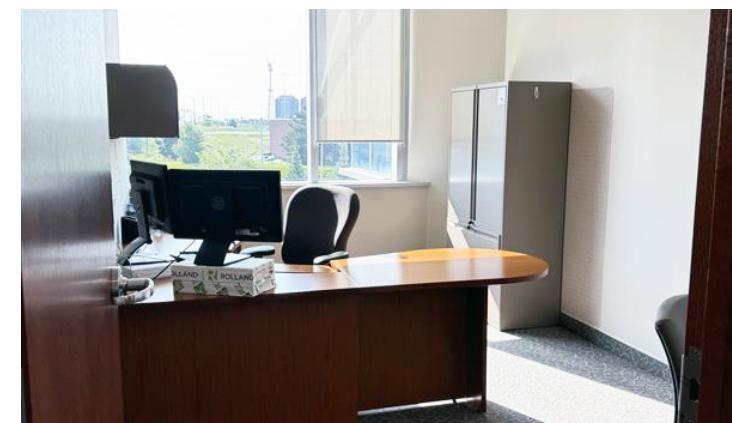
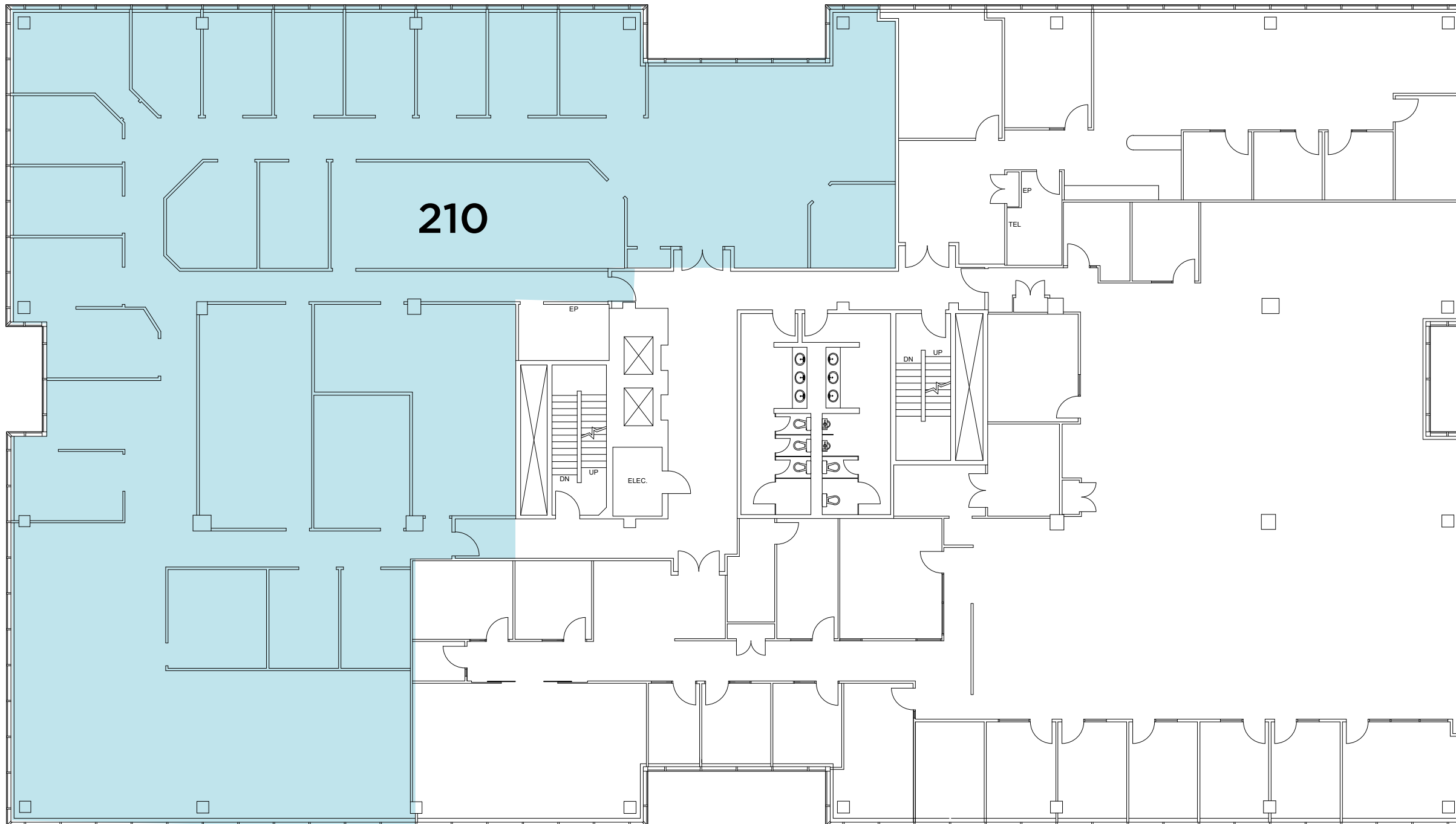
CROSSROADS
CORPORATE CENTRE

PART OF THE
CROSSROADS
CORPORATE CENTRE

Suite 210 - 10,689 SF

DESCRIPTION:

- Large reception area with seating and double glass entry with elevator exposure
- Large boardroom for 20 people, and 3 smaller meeting rooms (for 4, 6, and 8 people)
- Large lunchroom
- Large file room, print/copy room, and IT room
- 16 private offices and open area





BUILDING OVERVIEW



7025 Langer Drive has 64,000 sq. ft. of suburban office space on the 2.7 acre portion of Crossroads Corporate Centre Business Park. Steel structure and glazed curtain wall. Column free floor plates - approx. 23,000 sq. ft. High efficiency HVAC rooftop units and heat recovery units.

Year Built: 2014
 Total Rentable Area:
 64,100 sq. ft. (approx.)
 Anchor Tenant 1:
 Invafresh Systems Corp.
 Anchor Tenant 2:
 Farm Credit Canada

PROPERTY DESCRIPTION



Typ. Floor Plate	23,000 sq.ft	PSF Utilities:	\$1.50
Typ. % Gross up	8.0%	PSF Operating Costs:	\$11.40
		PSF Additional Rent Total:	\$17.79

PARKING



Surface # stalls:	198
Surface ratio:	4 spaces per 1,000 sq.ft
Monthly parking cost:	Free of charge
Parking description	Handicapped / Hybrid Parking; Bicycle Storage

TECHNICAL SPECIFICATIONS



Tenant:	10 watts/sq. ft.
Lighting:	10 watts/sq. ft.
Other:	10 watts/sq. ft.
Ceiling Height:	9'11" Ground Floor
Wall Type:	Window glazing
Washrooms per floor:	2
Satellite dish capability:	YES
Fibre optic capability:	YES (Bell and Rogers)
Shipping receiving:	YES
Emergency generator:	YES
HVAC dist system:	Variable air volume
HVAC hours:	6:00am-6:00pm Monday to Friday
After hours HVAC \$/hr:	\$50 (+ Admin Fee + HST)



ACCESS

Public transit:	YES
Barrier free access to building:	YES
To washroom	YES



ELEVATORS

High rise:	2
Mid rise:	0
Low rise:	2
Freight:	1
Parking:	1



SAFETY

Fire detection system:	YES
Sprinkler system:	YES
Manned security:	YES
Security systems:	YES



AWARDS & DESIGNATIONS

BOMA BEST Silver
 LEED Core & Shell
 LEED EB Platinum

MEADOWVALE Area Amenities

RESTAURANTS

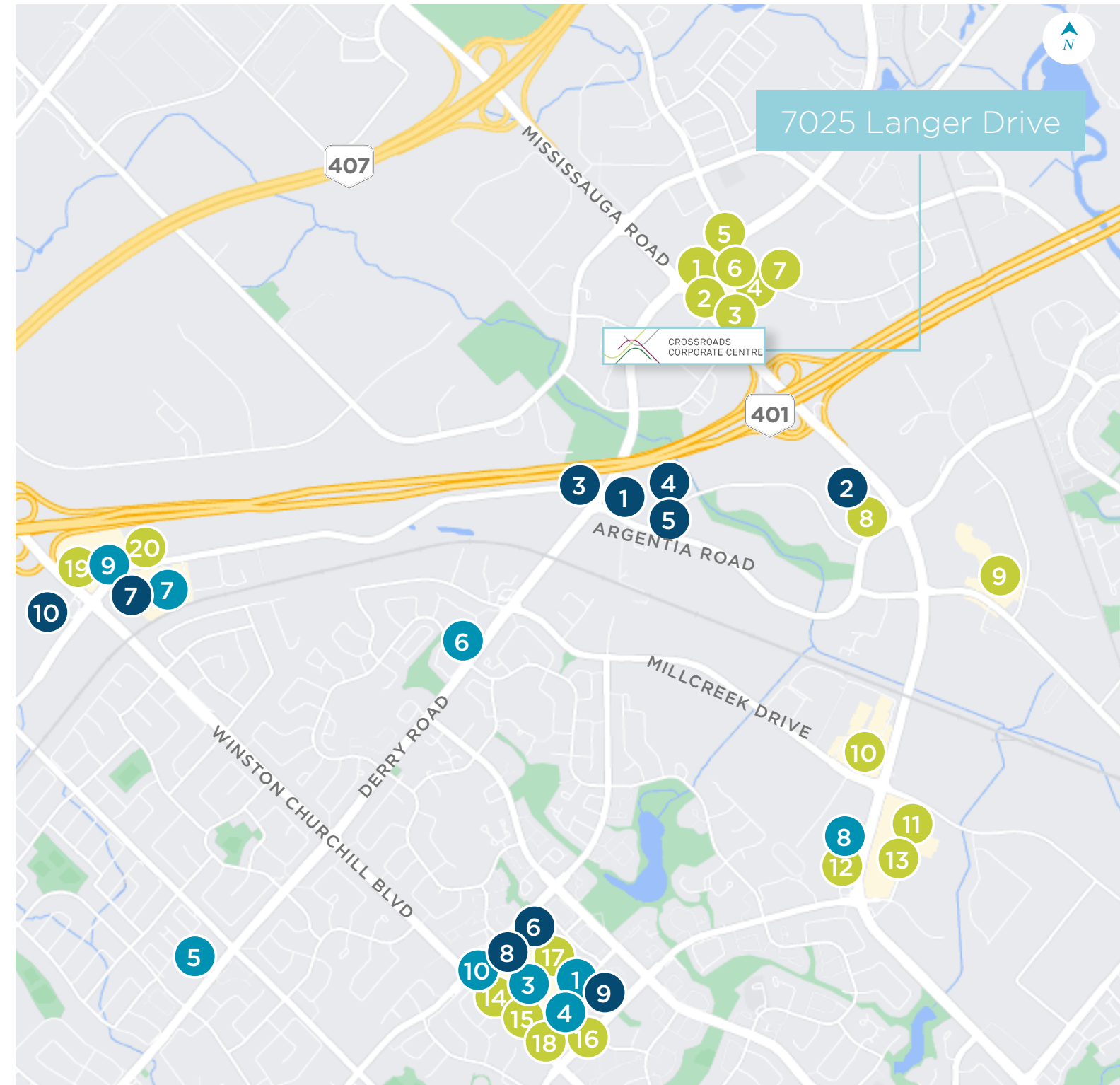
- | | |
|----------------------|------------------------|
| 1. Boston Pizza | 11. Eddie's Wok N Roll |
| 2. Tim Hortons | 12. Harveys |
| 3. Starbucks | 13. Chatime |
| 4. Swiss Chalet | 14. McDonalds |
| 5. Lena's Roti | 15. Social Eatery |
| 6. Thai Express | 16. Pho Mi 289 |
| 7. Panago Pizza | 17. Taps Public House |
| 8. Chop Steakhouse | 18. Burrito Boyz |
| 9. WIND Japanese | 19. Moxies |
| 10. Chucks Roadhouse | 20. Jack Astors |

RETAIL AND GAS

- | | |
|-----------------------|-----------------------|
| 1. Shoppers Drug Mart | 6. Circle K |
| 2. LCBO | 7. Esso |
| 3. Canadian Tire | 8. Petro Canada |
| 4. Metro | 9. Shell |
| 5. Rexall | 10. Canadian Tire Gas |

HOTELS AND BANKS

- | | |
|------------------------------|---------------------|
| 1. Four Points by Sheraton | 6. Bank of Montreal |
| 2. Hilton Mississauga | 7. RBC |
| 3. Holiday Inn | 8. TD Canada |
| 4. Courtyard by Marriott | 9. CIBC |
| 5. Residence Inn by Marriott | 10. HSBC |



Area Demographics

WITHIN 1 KM RADIUS

1,479.20
POPULATION

16,530.70
DAYTIME POPULATION

\$142,671.14
AVG HOUSEHOLD
INCOME

38
MEDIAN AGE



7025

7025

Michael Hagerty*
905 501 6422
michael.hagerty@cushwake.com

Fay Goveas**
905 501 6482
fay.goveas@cushwake.com



**CUSHMAN &
WAKEFIELD**



AUGUST 2024