



FOR LEASE

OFFICE/RETAIL

1586 E. STRATFORD AVE
SALT LAKE CITY, UT 84106

PROPERTY SUMMARY

Suite 4, located on the second floor, provides a private office environment with abundant natural light and a flexible, open layout that can accommodate multiple office configurations. With modern HVAC, lighting, and infrastructure, this space is well-suited for tech, legal, financial, or creative users seeking a professional setting with functional design.

PROPERTY ADDRESS	1586 E. Stratford Suite 4 ISLC 84106
SQUARE FEET	1,287 SF
BUILDING CLASS	Class B Office/ Retail
YEAR BUILT	2021
LEASE STRUCTURE	Triple Net (NNN)
LEASE PRICE	\$27 PSF



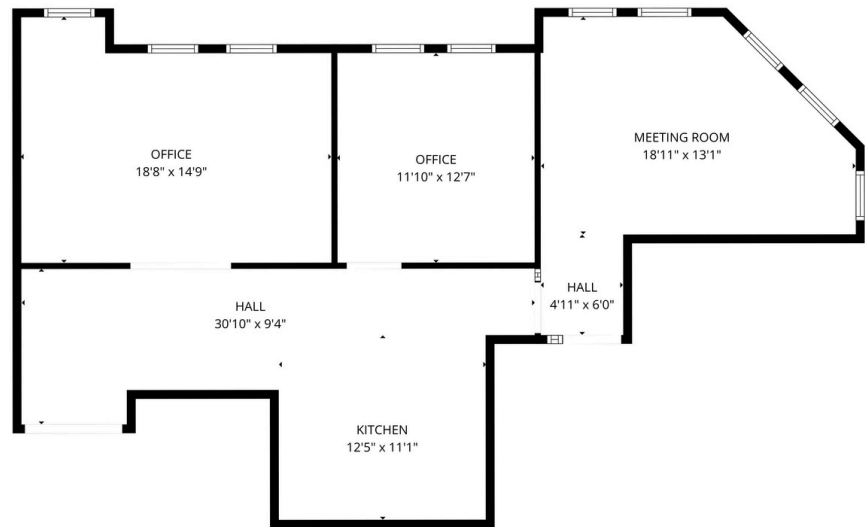
DAN RIP
Dan@acresutah.com
801.554.9664

RYAN EVANS
Ryan@acresutah.com
801.860.9090

ALIGN
COMPLETE REAL ESTATE SERVICES



FLOOR PLAN



PROPERTY PHOTOS



DAN RIP
 Dan@acresutah.com
 801.554.9664

RYAN EVANS
 Ryan@acresutah.com
 801.860.9090

ALIGN
 COMPLETE REAL ESTATE SERVICES