

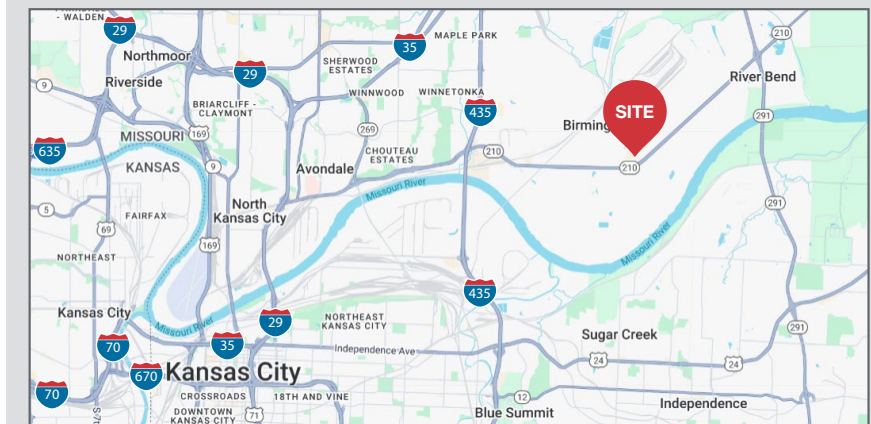


3501 N Kimball Drive Kansas City, Missouri

Available Spaces: ± 2,176 SF
Clear Height: 16'
Zoning: M1-5 Industrial
Loading: One (1) 12' High Drive-in Door
Lease Rate: \$2,000.00 per month gross Plus CAM

For more information:

Joe O'Neill, CCIM
+1 913 890 2010
joe@nai-heartland.com



NO WARRANTY OR REPRESENTATION, EXPRESS OR IMPLIED, IS MADE AS TO THE ACCURACY OF THE INFORMATION CONTAINED HEREIN, AND THE SAME IS SUBMITTED SUBJECT TO ERRORS, OMISSIONS, CHANGE OF PRICE, RENTAL OR OTHER CONDITIONS, PRIOR SALE, LEASE OR FINANCING, OR WITHDRAWAL WITHOUT NOTICE, AND OF ANY SPECIAL LISTING CONDITIONS IMPOSED BY OUR PRINCIPALS NO WARRANTIES OR REPRESENTATIONS ARE MADE AS TO THE CONDITION OF THE PROPERTY OR ANY HAZARDS CONTAINED THEREIN ARE ANY TO BE IMPLIED.

4400 College Boulevard Suite 170
Overland Park, Kansas 66211
913 362 1000

nai-heartland.com

For Lease Office/Warehouse, Flex Space

3501-3511 N Kimball Dr, Kansas City, MO



NAIHeartland

4400 College Boulevard Suite 170
Overland Park, Kansas 66211
913 362 1000
nai-heartland.com

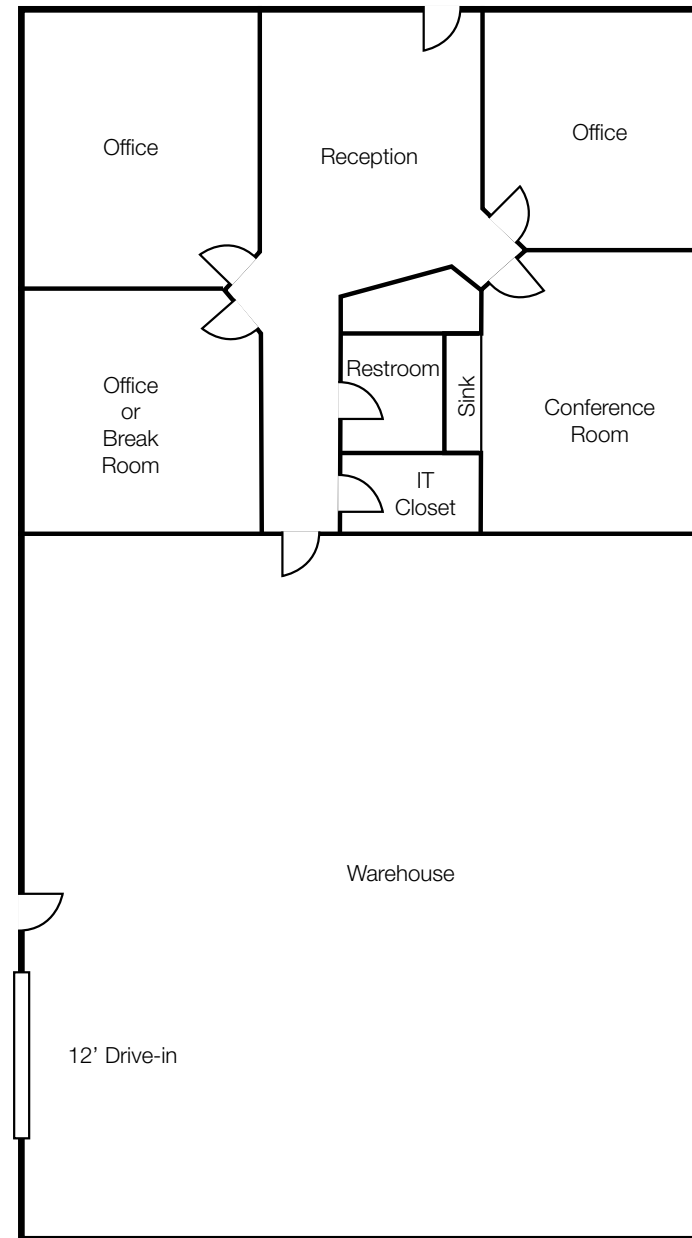
Joe O'Neill, CCIM
+1 913 890 2010
joe@nai-heartland.com

For Lease Office/Warehouse, Flex Space

3501-3511 N Kimball Dr, Kansas City, MO

3501 N Kimball Dr Features

- ± 2,176 SF Available
- ± 932 SF office
- 16' clear-height
- One (1) 12' High Drive-in door
- 3-phase power available
- Lease Rate: \$2,000.00 per month gross Plus CAM



Approximate floor layout