

FOR LEASE

GROOMING
SERVICES

VETERINARY
SPECIALTY
SERVICES

KENNEL

PET DAYCARE

OFFICE

RETAIL

**\$4,500 PER MONTH
+ TRIPLE NET**



LUIZ T. YAMASHITA, CCIM

T: +1 (843) 608-8882
Lyamashita@dunesproperties.com
835 Coleman Blvd, Ste 200
MT. Pleasant, SC 29464

LUCAS BENI

T: +1 (843) 972-3275
Lbeni@dunesproperties.com
835 Coleman Blvd, Ste 200
MT. Pleasant, SC 29464

PROPERTY

**5617 Dorchester Road
North Charleston, SC 29418**



This versatile 2,600 SF space offers a unique opportunity for businesses seeking a well-designed layout with multiple possibilities. Ideally suited for office, retail, or specialty use such as a grooming services, veterinary specialty services., kennel or pet daycare, this property is loaded with features to support your operations:

Interior Layout: Six private offices, perfect for administrative or client-facing needs, Welcoming reception area to create a professional first impression. Shared kitchen, offering convenience for staff and clients alike.

Additional Features: A 1,450 SF warehouse, providing ample storage or workspace. An 1,800 SF fenced area, ideal for secure outdoor activities, whether for business operations or as a play area for animals.

Pet-Friendly Business Ready:

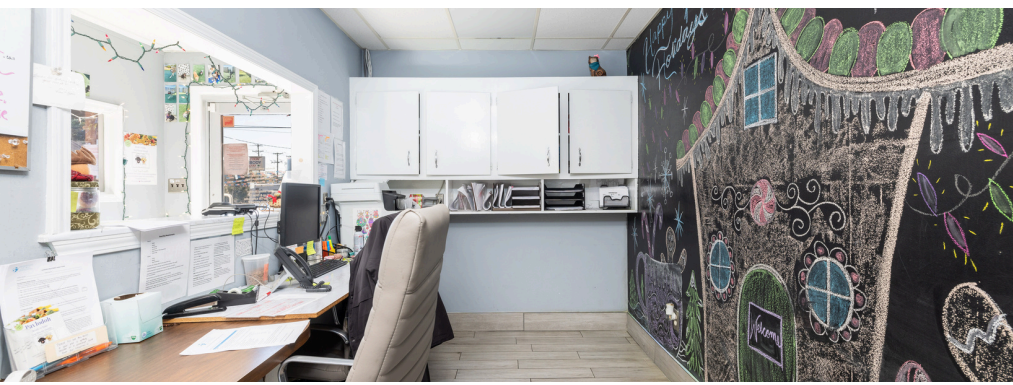
This property is particularly suited for a kennel or pet daycare. The fenced area offers secure outdoor space for animals to play or exercise. Should the incoming tenant wish to utilize the existing kennel furniture and equipment, the landlord is open to incorporating this into the lease agreement.

Location Highlights:

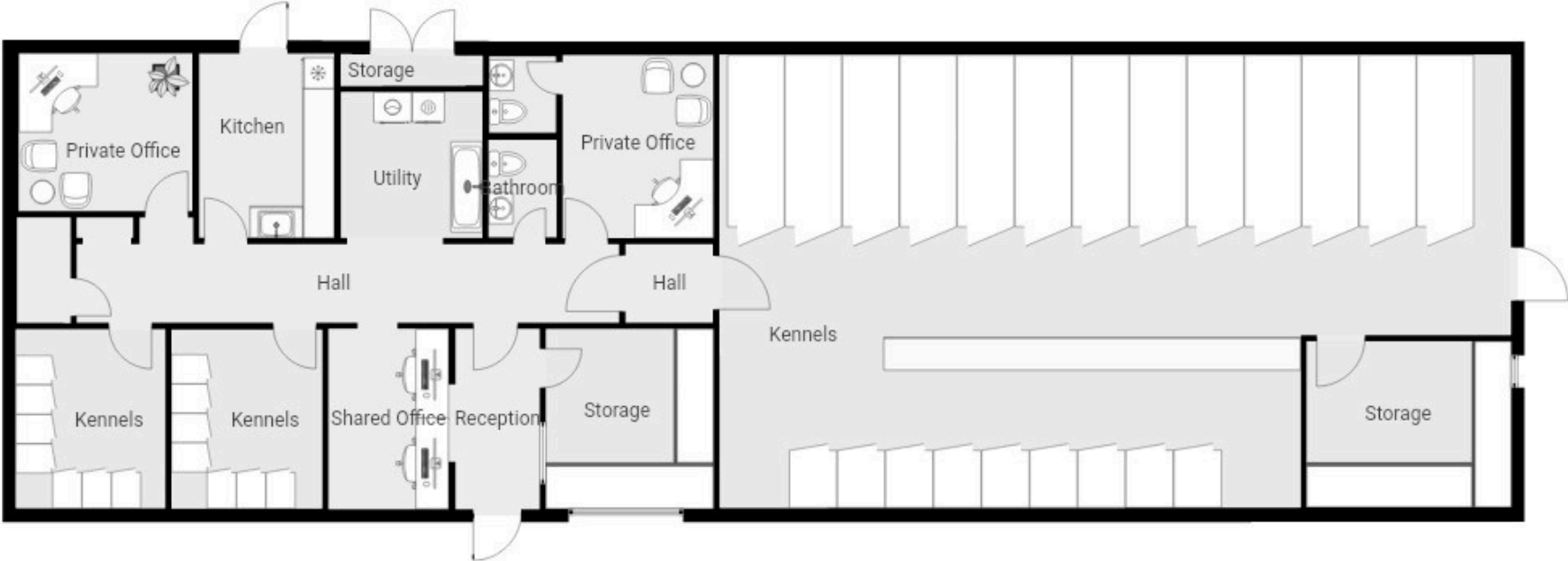
Located on the bustling Dorchester Road corridor, this property enjoys excellent visibility, convenient access, and proximity to a variety of businesses and residential areas.

Don't miss the chance to lease this adaptable space that can cater to a variety of business needs.





PROPERTY FLOOR PLAN



LOCATION



Traffic Counts

Dorchester Road: 24,698 per day

CONTACT



LUIZ T. YAMASHITA, CCIM

T: +1 (843) 608-8882

Lyamashita@dunesproperties.com

835 Coleman Blvd, Ste 200

Mount Pleasant, SC 29464



LUCAS BENI

T: +1 (843) 972-3275

Lbeni@dunesproperties.com

835 Coleman Blvd, Ste 200

Mount Pleasant, SC 29464