

# 9721 Ormsby Station Rd.

Louisville, KY 40223

103,410± SF Available



## Property Features

- + 103,410± SF Available
- + Located across from Northeast YMCA and Embassy Suites Hotel
- + Overlooks scenic lake at Hurstbourne Green
- + Parking ratio: 5.5 per 1,000
- + Adjacent to Hurstbourne Green walking path which connects the building to numerous retail amenities
- + Efficient floor plan for large users

## Aerial Map

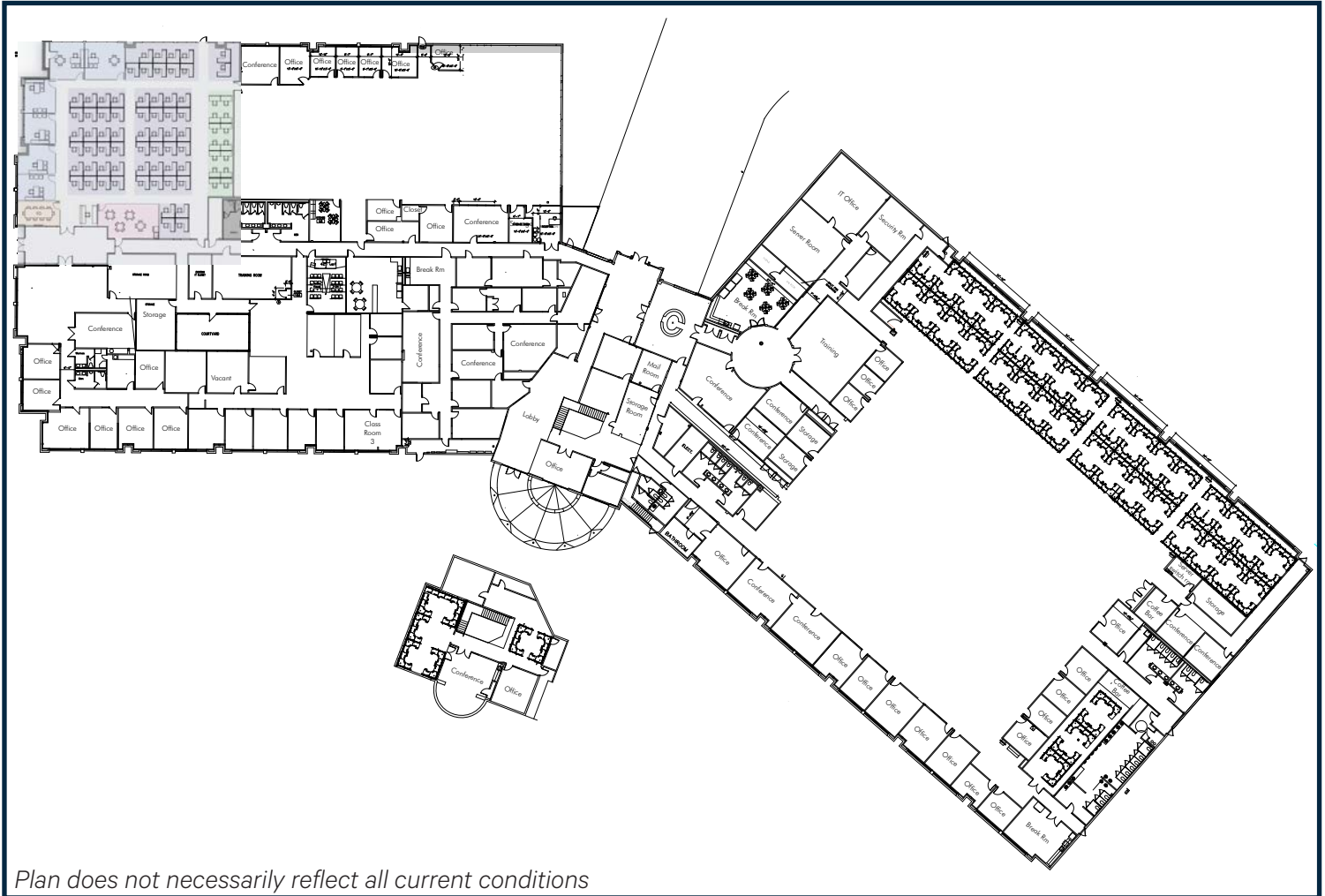


## Property Summary

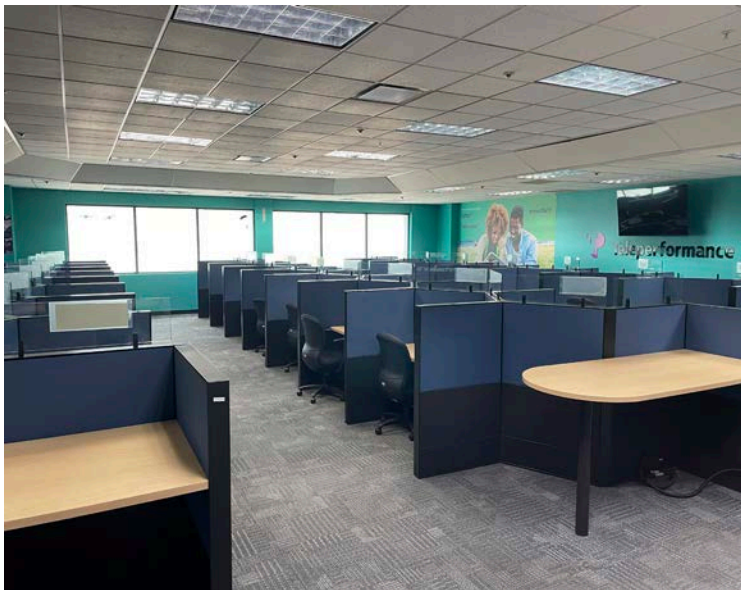
9721 Ormsby Station Road is conveniently located in the Hurstbourne Green Office Park along North Hurstbourne Parkway. The one story 103,410 SF office building offers an outstanding location in Louisville's largest suburban office submarket. Situated on a prominent 10.57 acre site along Ormsby Station Road, the site provides panoramic views of the adjacent lake and surrounding green space creating a park like setting for the building tenants.



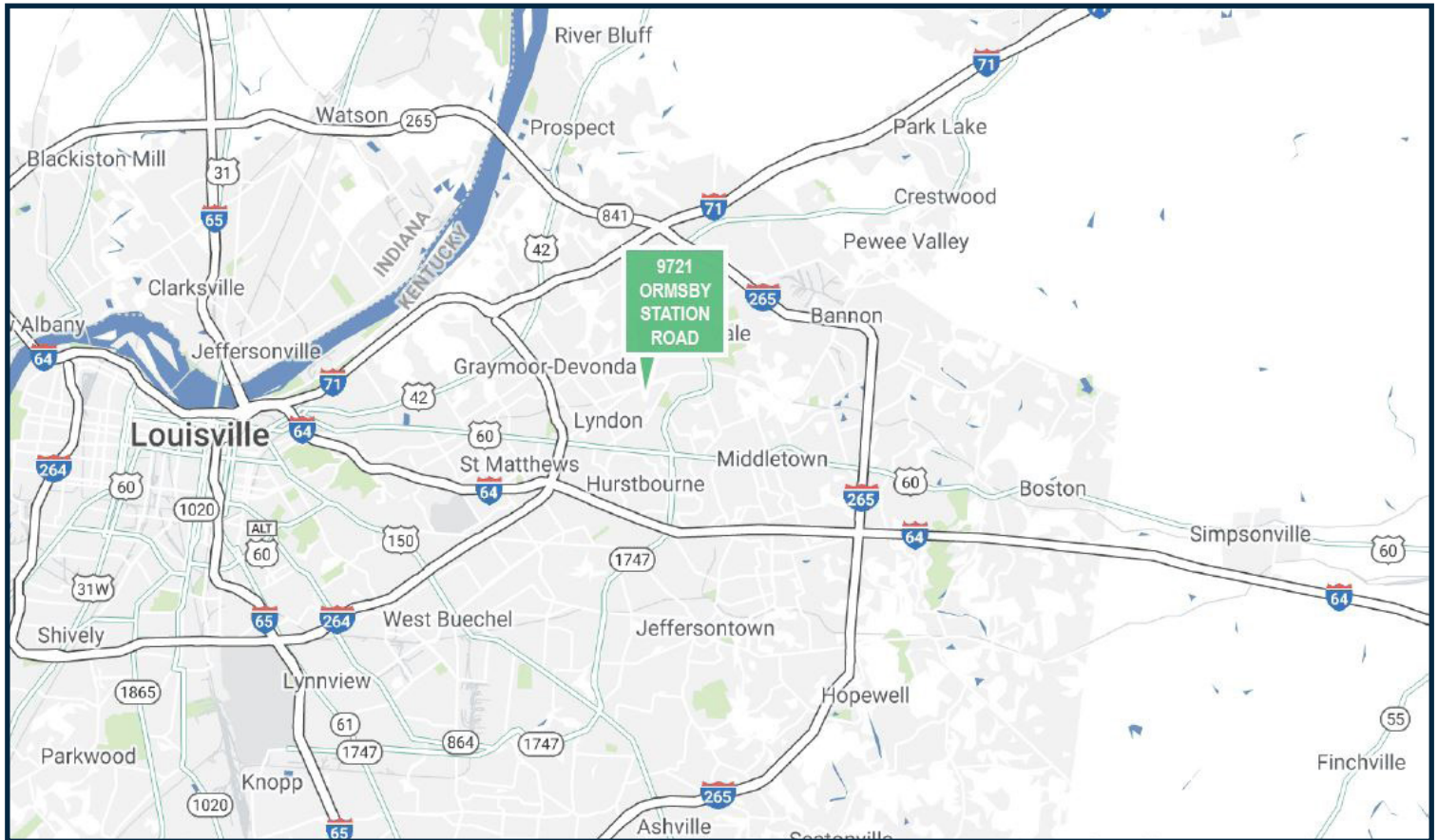
# Floor Plan - 103,410± SF



## Interior Photos



## Location Map



## Contact Us

**Jeff Dreher, SIOR**  
Senior Vice President  
+1 502 412 7610  
jeff.dreher@cbre.com

**David L. Hardy, CCIM**  
Managing Director  
+1 502 412 7644  
david.hardy@cbre.com

© 2024 CBRE, Inc. All rights reserved. This information has been obtained from sources believed reliable, but has not been verified for accuracy or completeness. You should conduct a careful, independent investigation of the property and verify all information. Any reliance on this information is solely at your own risk. CBRE and the CBRE logo are service marks of CBRE, Inc. All other marks displayed on this document are the property of their respective owners, and the use of such logos does not imply any affiliation with or endorsement of CBRE. Photos herein are the property of their respective owners. Use of these images without the express written consent of the owner is prohibited.