

1835

BROADWAY

Charlottesville, VA

14,835 SQUARE FEET AVAILABLE FOR SUBLEASE

Contact
Exclusive Broker:

MONTY HARRIS
404.849-4750 | monty.harris@nmrk.com

NEWMARK

1835

BROADWAY

Charlottesville, VA

SPECS

PREMISES: 14,835 SF

TERM: Negotiable

POSSESSION: Immediate

RATE: \$23.50/SF NNN



FEATURES

- Fully furnished and ready to occupy
- Open with great light
- Collaborative space
- Break room /kitchen
- Network closet

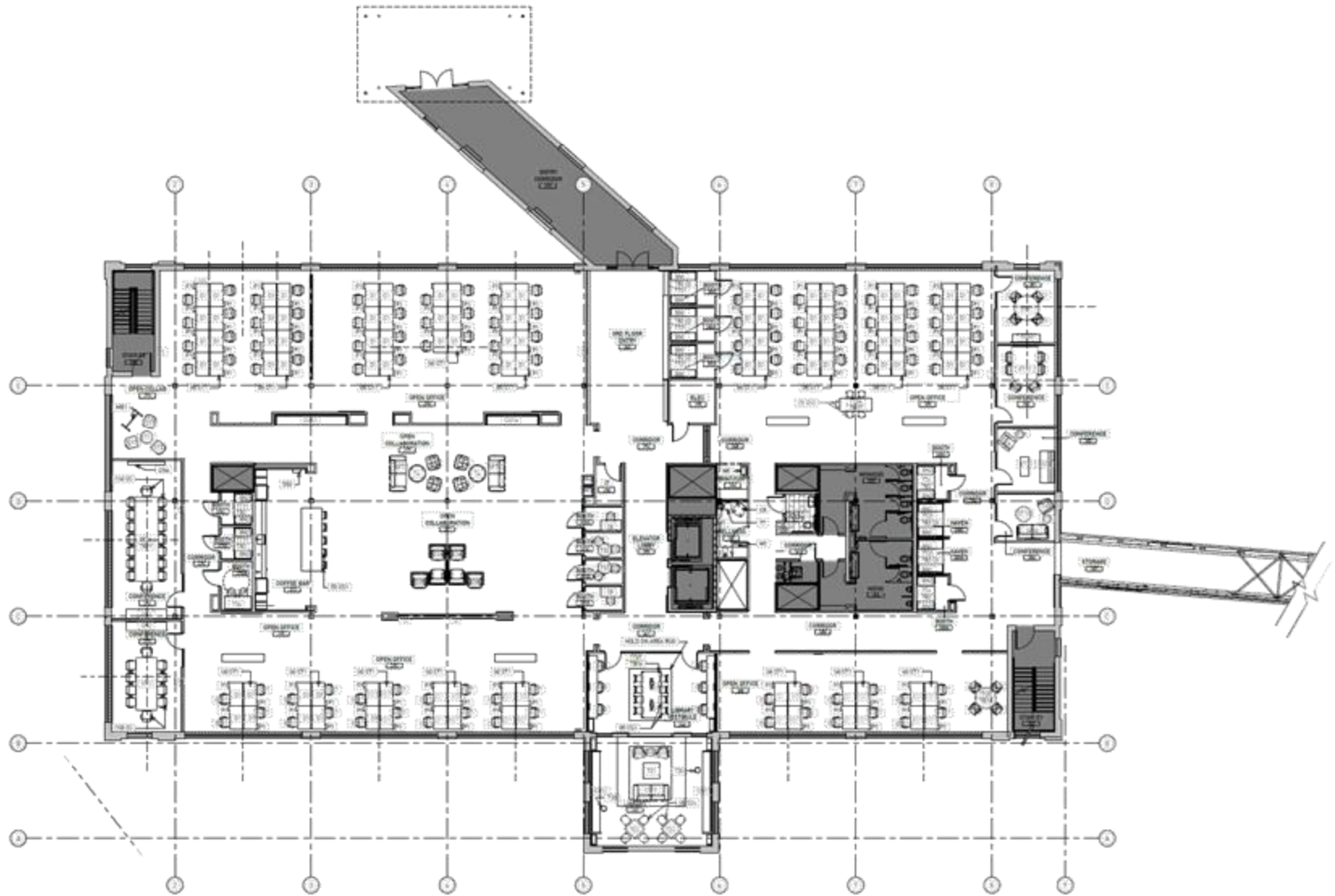
PROPERTY HIGHLIGHTS

- Redevelopment of historic Woolen Mills
- Completed in 2020
- Adjacent to Rivanna River, Riverview Park and nature trails
- Headquarters of Willowtree, an award-winning app developer

Contact **MONTY HARRIS**
Exclusive Broker: 404.849-4750 | monty.harris@nmrk.com

NEWMARK

Floor Plan



Interior Images



Open lobby



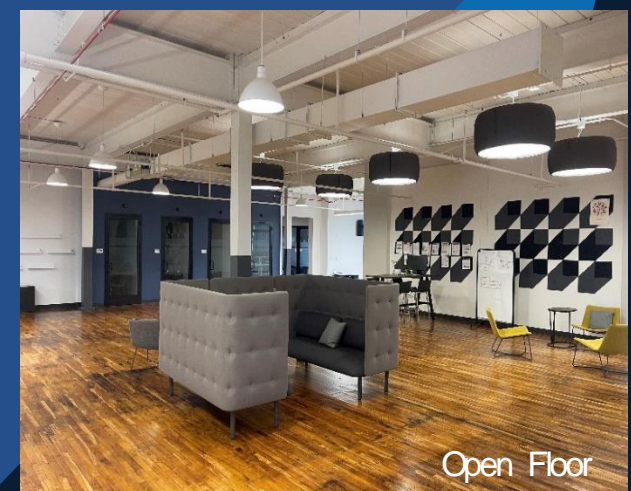
Subtenant Entrance



Private Office



Break Room



Open Floor