


# FOR LEASE • ±0.50 - 5.09 ACRES

1800 SW 42ND WAY, DEERFIELD BEACH, FL 33442  
**INDUSTRIAL OUTDOOR STORAGE**



**COMMERCIAL  
REAL  
ESTATE  
ADVISORS**



**±5.09  
ACRES**

## PROPERTY FEATURES:

- Close Proximity to FL Turnpike and I-95
- Fully Fenced & Secure Site
- ±5.09 Acres Total - Can be Subdivided
  - **±0.50 AC - \$5.50 NNN**
  - **±1.0 - 2.0 AC - \$5.00 NNN**
  - **±2.5 - 5.09 AC - \$4.50 NNN**
- Office Trailer On Site - 2 Private Offices, Open Work Area, Restroom
- Permitted Heavy Industrial Outdoor Storage

## CONTACT



**CHAD GOTTSEGEN**  
Managing Director  
**561-400-7750**  
[chad@lrmcrea.com](mailto:chad@lrmcrea.com)



**ADRIAN MINOR**  
President  
**561-756-0114**  
[adrian@lrmcrea.com](mailto:adrian@lrmcrea.com)



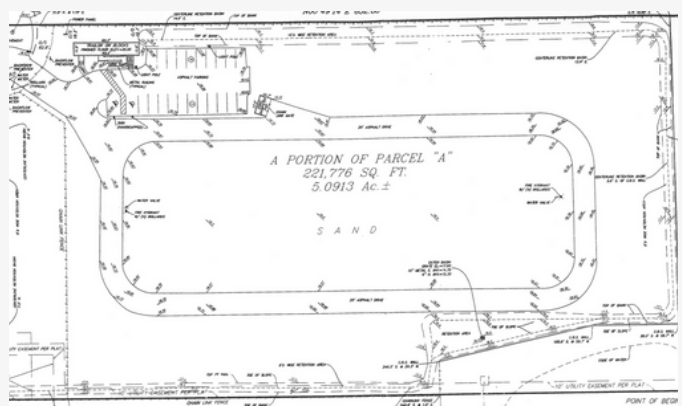
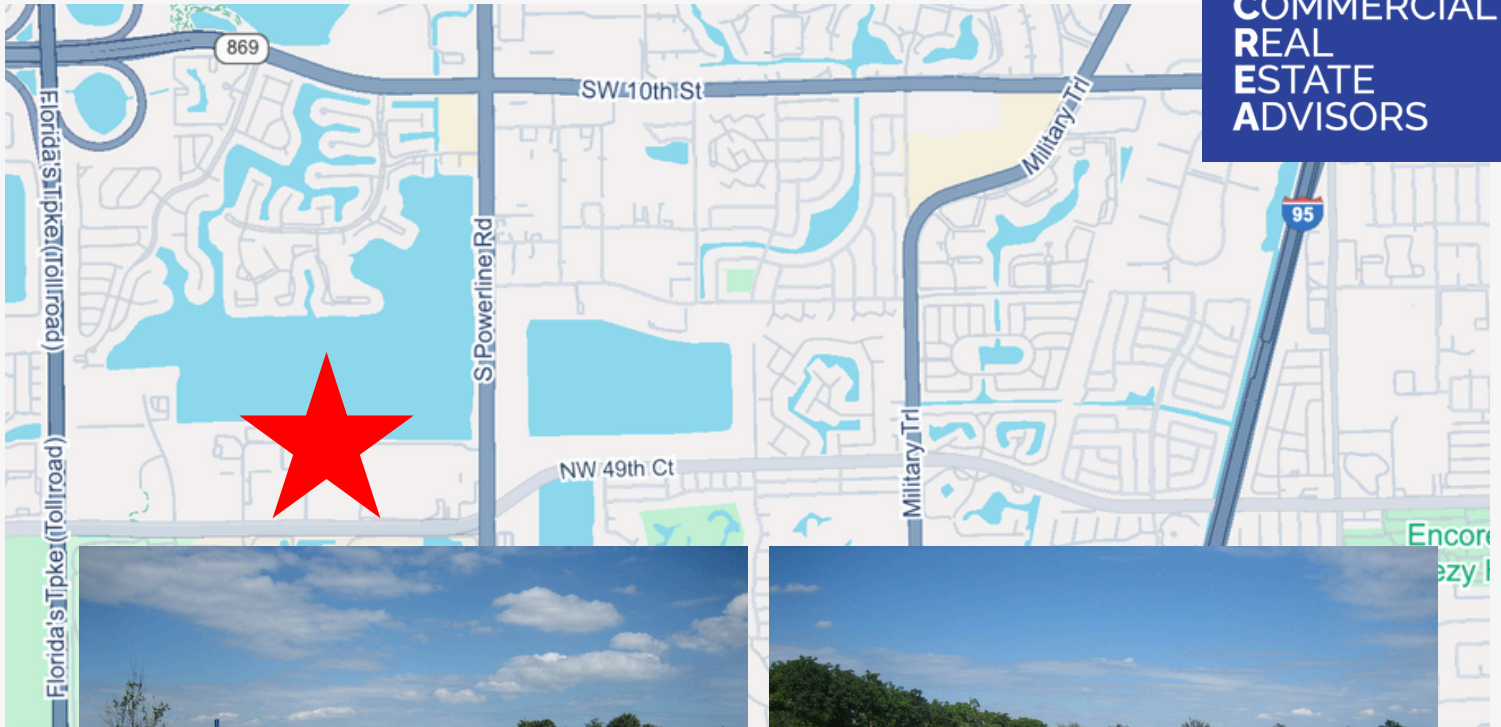
This information has been obtained from sources believed reliable. We have not verified it and make no guarantee, warranty or representation about it. Any projections, opinions, assumptions or estimates used are for example only and do not represent the current or future performance of the property. You and your advisors should conduct a careful, independent investigation of the property to determine to your satisfaction the suitability of the property for your needs.

# FOR LEASE • ±0.50 - 5.09 ACRES

## 1800 SW 42ND WAY, DEERFIELD BEACH, FL 33442 INDUSTRIAL OUTDOOR STORAGE



COMMERCIAL  
REAL  
ESTATE  
ADVISORS



### CONTACT



**CHAD GOTTSEGEN**  
Managing Director  
**561-400-7750**  
[chad@lrmcrea.com](mailto:chad@lrmcrea.com)



**ADRIAN MINOR**  
President  
**561-756-0114**  
[adrian@lrmcrea.com](mailto:adrian@lrmcrea.com)



This information has been obtained from sources believed reliable. We have not verified it and make no guarantee, warranty or representation about it. Any projections, opinions, assumptions or estimates used are for example only and do not represent the current or future performance of the property. You and your advisors should conduct a careful, independent investigation of the property to determine to your satisfaction the suitability of the property for your needs.

3100 NW 2ND AVE, STE 201, BOCA RATON, FL 33431 | [WWW.LRMCREA.COM](http://WWW.LRMCREA.COM)