

FREESTANDING BUILDING FOR SALE

820 W Summit Street | Winterset, IA



OVERVIEW

Well-maintained free-standing office building on 2.5 AC of land in close proximity to the hospital in Winterset, IA. This former medical office is easily convertible. Previous tenants were a physical therapy office (leaving due to expansion) and a dental office (leaving due to retirement). This 4,782 SF building features new roof, ADA access, abundant parking, and many existing improvements including walk-out lower level with 4 overhead doors.

FEATURES

- Zoning-Commercial
- Year built: 1969
Addition in 2007
- Ideal for an owner-user or an investor looking for one or more tenants

DEMOGRAPHICS

ESRI 2024	3 mile	5 mile
Population	6,164	7,231
Avg. HH Income	\$86,079	\$89,519

SALE PRICE
\$985,000

FOR MORE INFORMATION:

David Wolf | Cell: 319-530-6342
Email: davidwolf@buyersrealtyinc.com

A MEMBER OF
CHAINLINKS
RETAIL ADVISORS

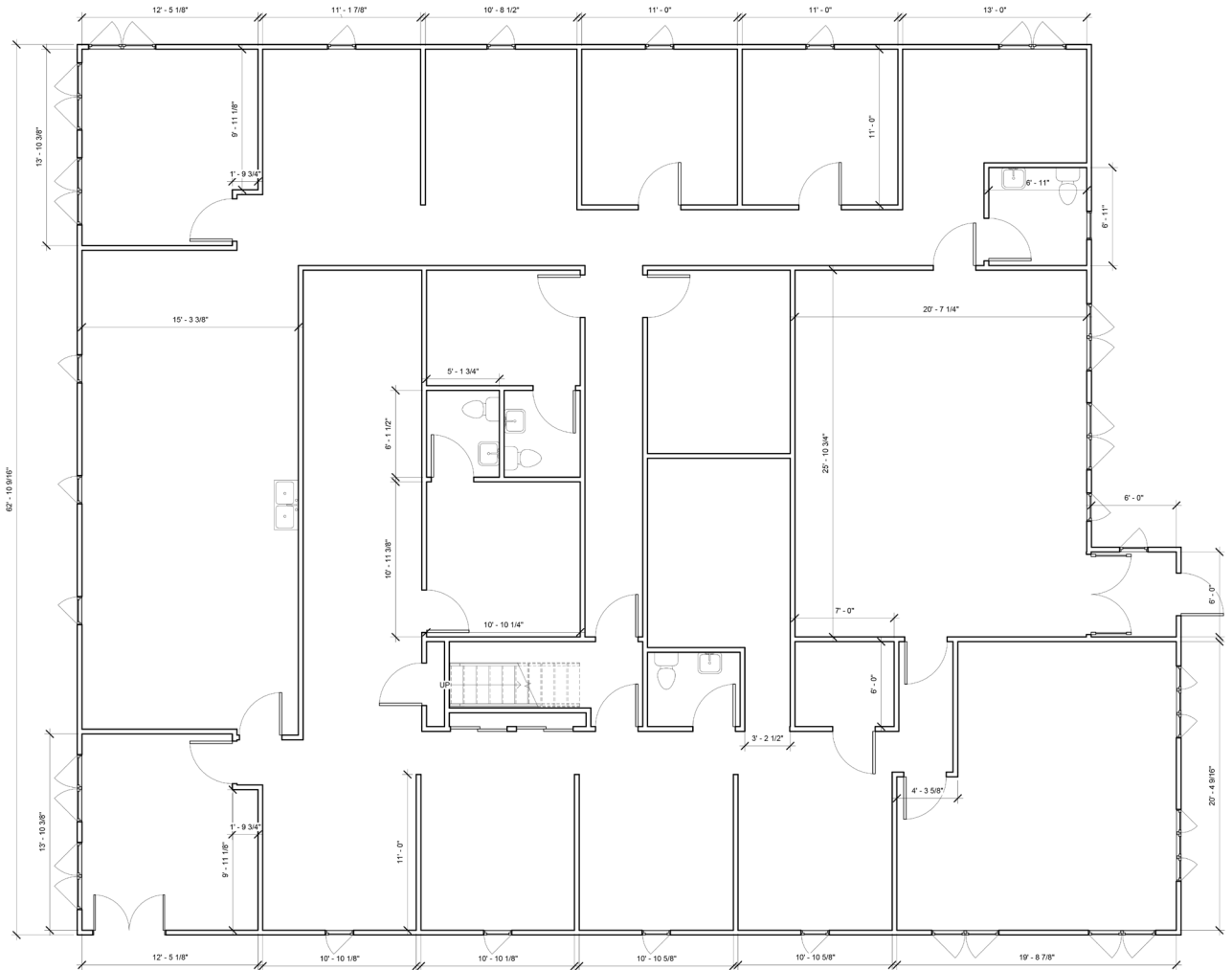


4350 Westown Parkway Suite 100 West Des Moines, IA 50266
www.buyersrealtyinc.com OFFICE 515-277-4000

BUYERS REALTY INC.

FREESTANDING BUILDING FOR SALE

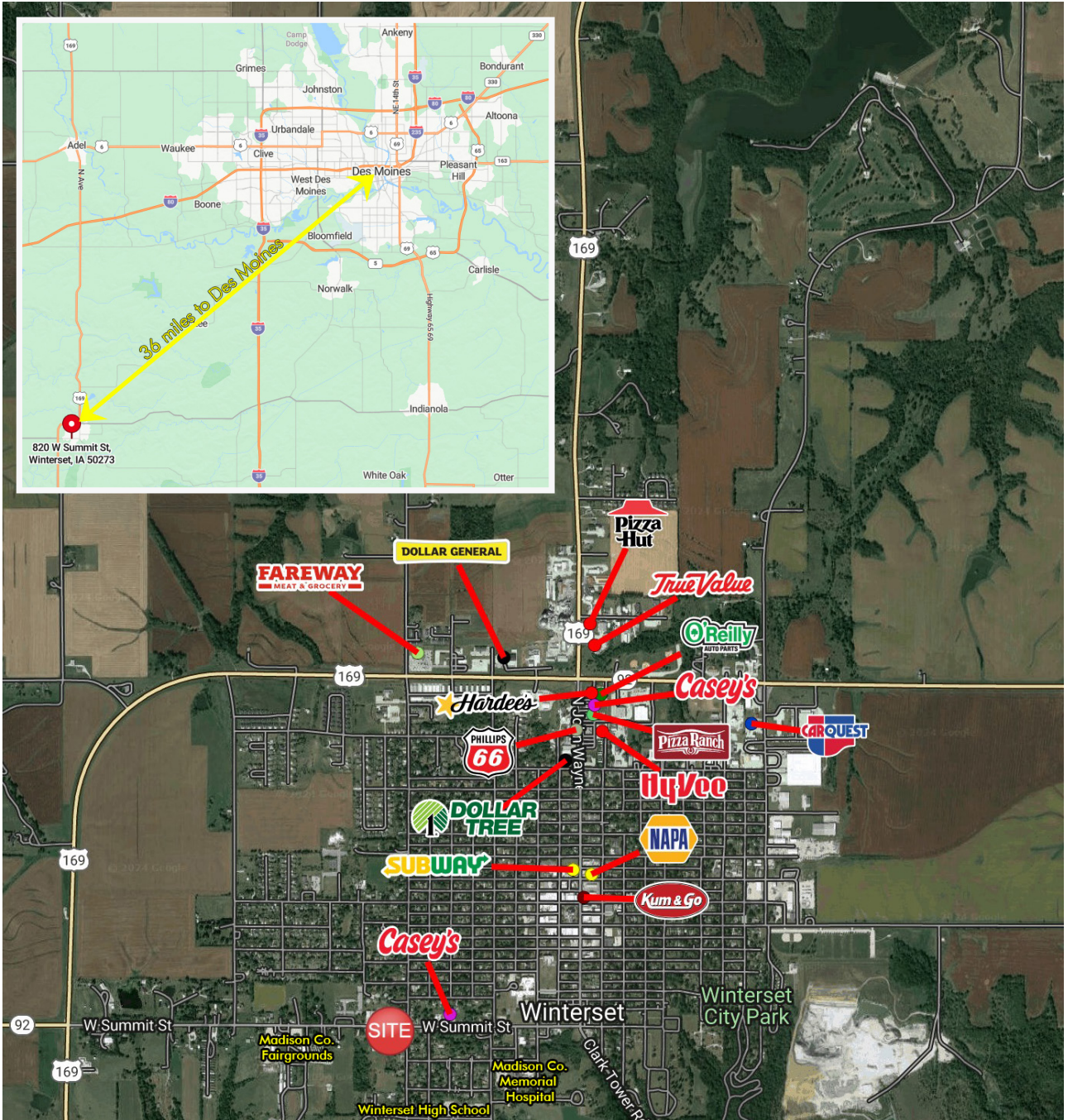
820 W Summit Street | Winterset, IA



4350 Westown Parkway Suite 100 West Des Moines, IA 50266
www.buyersrealtyinc.com OFFICE 515-277-4000

FREESTANDING BUILDING FOR SALE

820 W Summit Street | Winterset, IA



FOR MORE INFORMATION:

David Wolf | Cell: 319-530-6342
Email: davidwolf@buyersrealtyinc.com

A MEMBER OF
CHAINLINKS
RETAIL ADVISORS



4350 Westown Parkway Suite 100 West Des Moines, IA 50266
www.buyersrealtyinc.com OFFICE 515-277-4000