

42171-42247 ANN ARBOR RD  
PLYMOUTH, MICHIGAN

OFFICE FOR LEASE  
221 – 4,626 Square Feet Available



**SIGNATURE  
ASSOCIATES**  
KNOW SIGNATURE | KNOW RESULTS

**PMC CENTER EAST & WEST**



## PROPERTY FEATURES

- 221 – 4,626 square feet available
- High visibility location on Ann Arbor Rd.
- Easy Access to major freeways and Downtown Plymouth
- Retail and office suites available
- Well maintained building with on-site management
- Abundant Parking
- Lease Rate: \$16.00-\$22.00/sq. ft. Gross

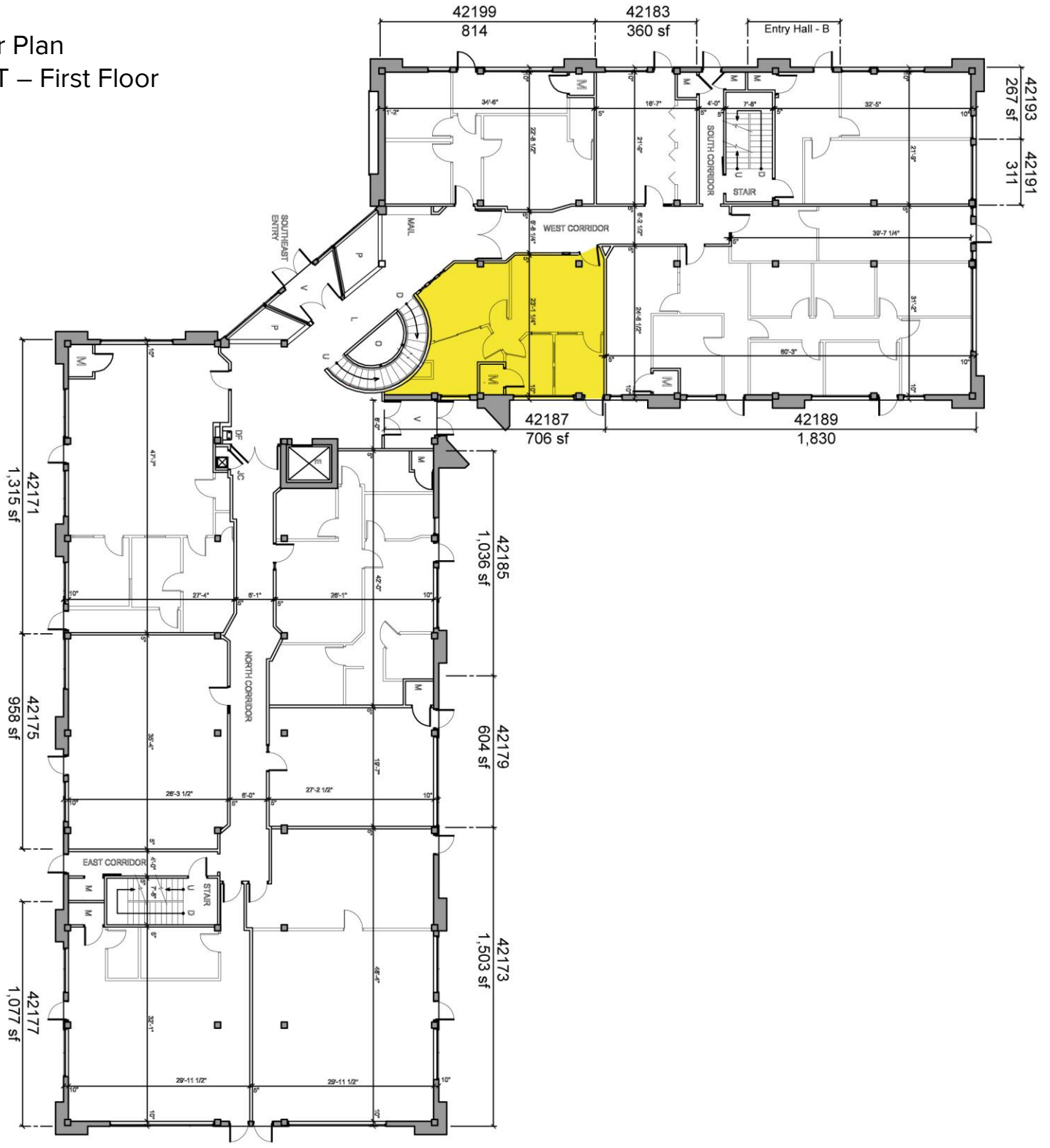


For more information, please contact:

**JASON STOUGH**  
(248) 948 4180  
jstough@signatureassociates.com

**SIGNATURE ASSOCIATES**  
One Towne Square, Suite 1200  
Southfield, MI 48076  
www.signatureassociates.com

Floor Plan  
EAST – First Floor

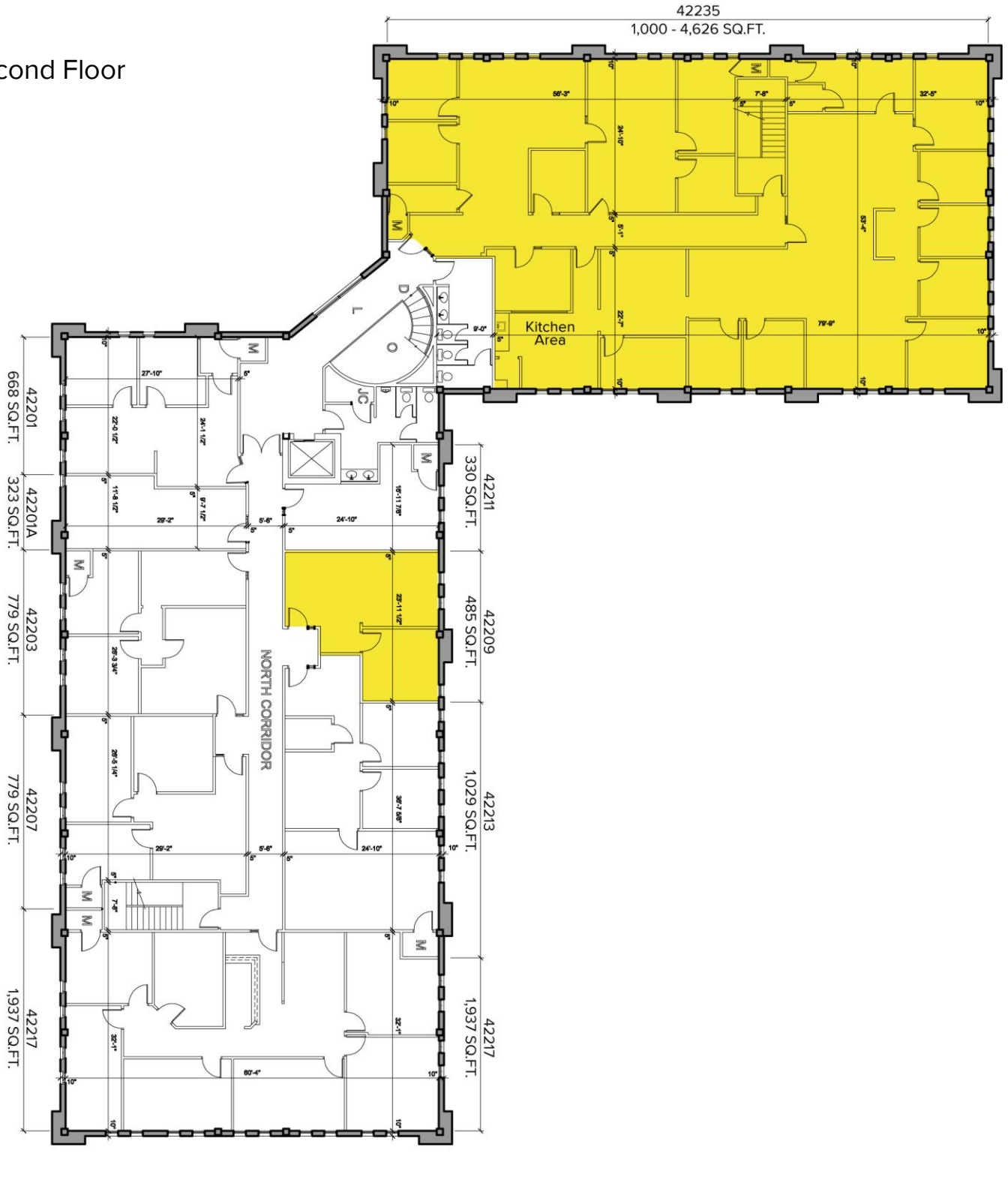


For more information, please contact:

**JASON STOUGH**  
(248) 948 4180  
jstough@signatureassociates.com

**SIGNATURE ASSOCIATES**  
One Towne Square, Suite 1200  
Southfield, MI 48076  
www.signatureassociates.com

Floor Plan  
EAST - Second Floor



For more information, please contact:

**JASON STOUGH**  
(248) 948 4180  
jstough@signatureassociates.com

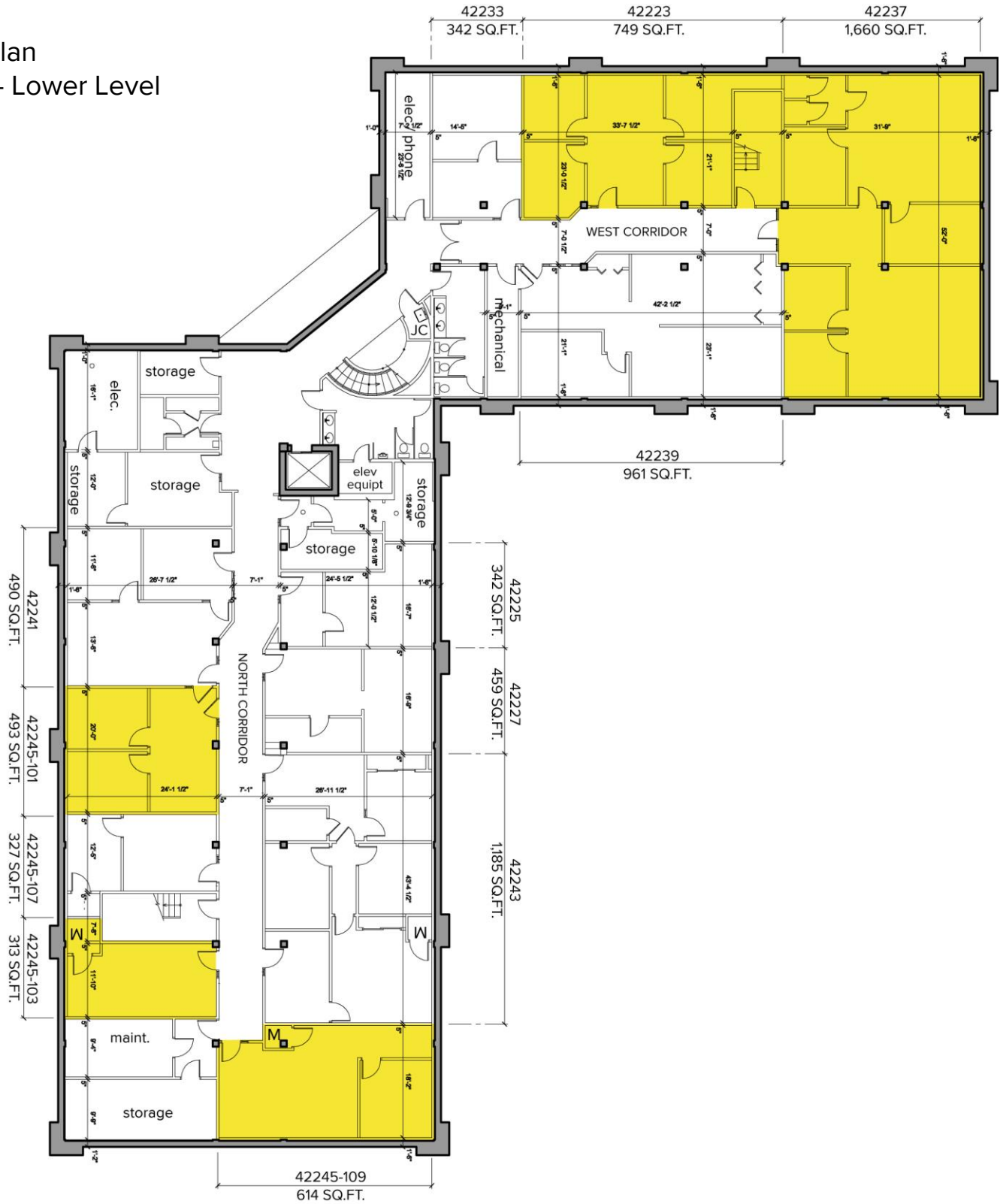
**SIGNATURE ASSOCIATES**  
One Towne Square, Suite 1200  
Southfield, MI 48076  
www.signatureassociates.com

# 42171-42247 Ann Arbor Road - Plymouth, Michigan

## Office For Lease

221 – 4,626  
Square Feet  
AVAILABLE

### Floor Plan EAST – Lower Level



For more information, please contact:

**JASON STOUGH**  
(248) 948 4180  
jstough@signatureassociates.com

**SIGNATURE ASSOCIATES**  
One Towne Square, Suite 1200  
Southfield, MI 48076  
www.signatureassociates.com

## Floor Plan WEST – First and Second Floor



For more information, please contact:

**JASON STOUGH**  
(248) 948 4180  
jstough@signatureassociates.com

**SIGNATURE ASSOCIATES**  
One Towne Square, Suite 1200  
Southfield, MI 48076  
www.signatureassociates.com