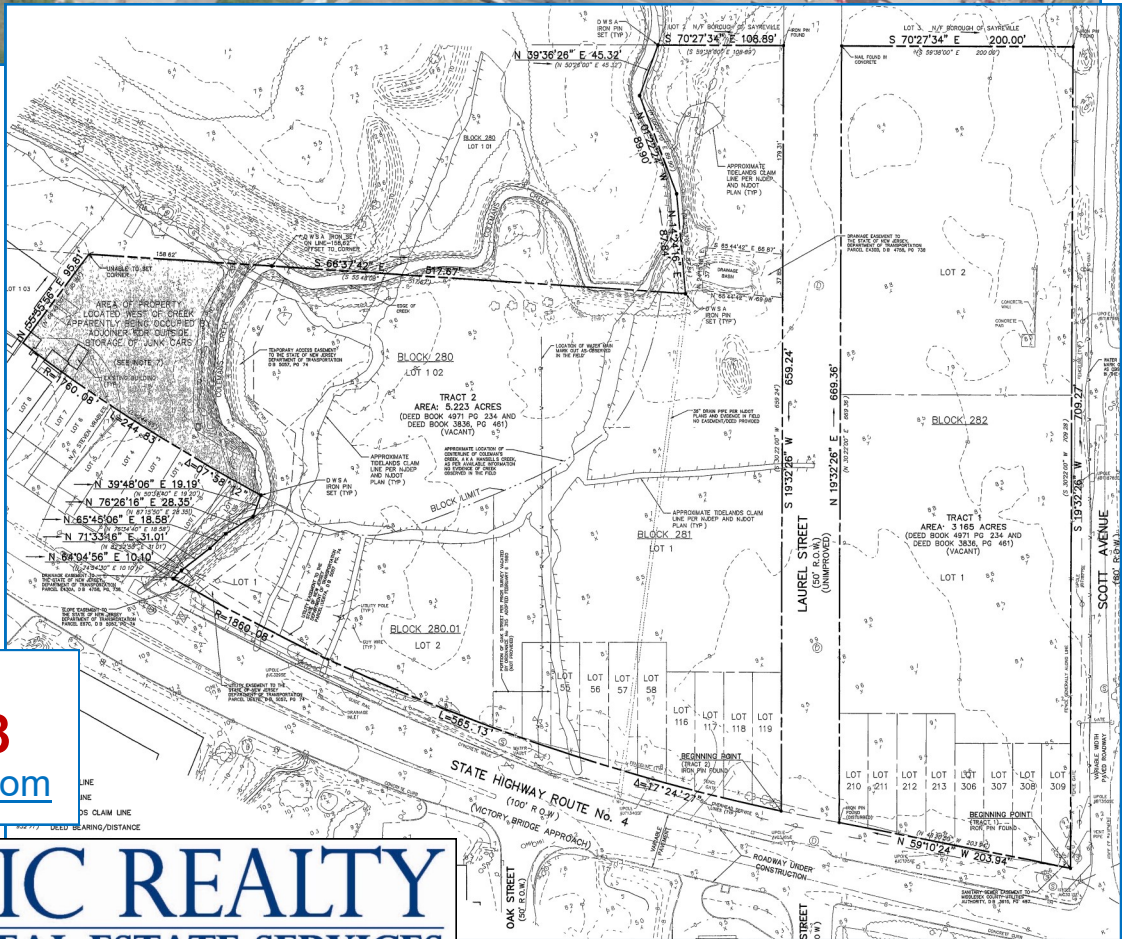


FOR SALE or LEASE

6125 Main Street, Sayreville, New Jersey
**±117,813 Sq. Ft. Fully Approved on
 ±8.3 Acres (6 Usable)**

Bill Hettler **732.738.8888**
bill@logisticrealty.com
 Resume: www.williamhettler.com



Bill Hettler
732.738.8888
bill@logisticrealty.com

FOR SALE or LEASE

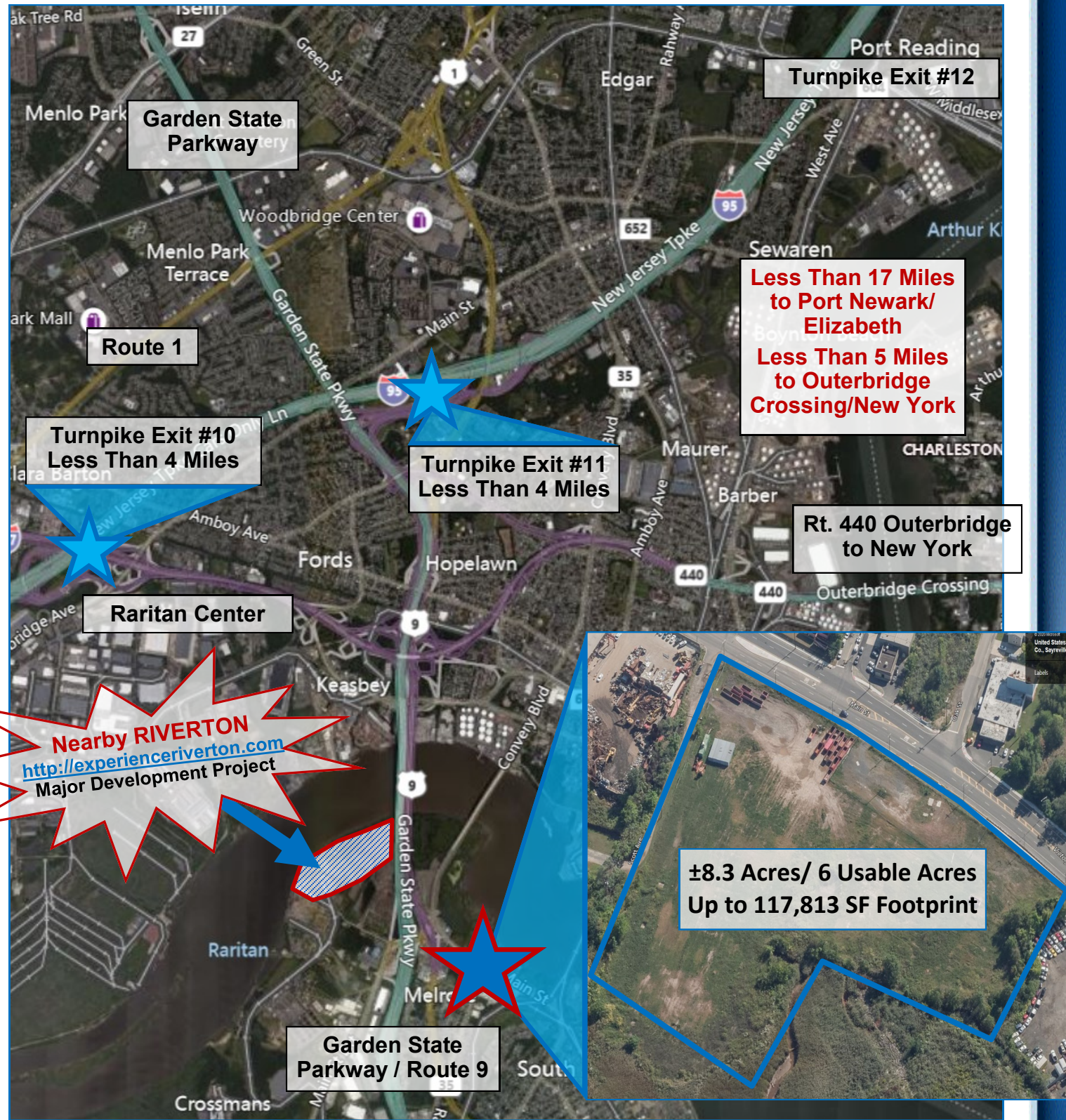
6125 Main Street, Sayreville, New Jersey

±117,813 Sq. Ft. on 8.3 Acres (6 Usable)

Bill Hettler **732.738.8888**

bill@logisticrealty.com

Resume: www.williamhettler.com



Turnpike Exit #12

Garden State Parkway

Route 1

Less Than 17 Miles to Port Newark/Elizabeth
Less Than 5 Miles to Outerbridge Crossing/New York

Turnpike Exit #10
Less Than 4 Miles

Turnpike Exit #11
Less Than 4 Miles

Rt. 440 Outerbridge to New York

Raritan Center

Nearby RIVERTON
<http://experiencerviverton.com>
Major Development Project

±8.3 Acres/ 6 Usable Acres
Up to 117,813 SF Footprint

Garden State Parkway / Route 9