



PROPERTY DESCRIPTION

Exciting Renovations in Progress! Discover unparalleled visibility along North Wilmington's premier retail corridor. The upcoming transformation will result in 1,732 square feet of ground floor retail space, accompanied by an additional 730 square feet of second-floor office space, each with independent access. Don't miss the opportunity to be a part of this thriving retail hub!

Located on the desirable northbound side of Concord Pike 2.5 miles from the I-95/Concord Pike Interchange. Property sits between Delaware Avenue and Cleveland Avenue.

PROPERTY DETAILS

- **Ground Floor Retail:** 1,732 SF
 - > **Lease Rate:** \$45/SF/NNN
- **Second Floor Office:** 730 SF
 - > **Lease Rate:** Negotiable
- **Traffic Counts:** ~45,000 AADT
- **Delivery Date:** June 2024

DEMOGRAPHICS	1 MILE	3 MILES	5 MILES
Population	8,867	56,201	189,136
Daytime Population	12,470	65,945	218,676
Households	3,665	22,994	76,778
Average Household Income	\$143,540	\$124,803	\$99,014
Median Age	47.4	46.8	40.9

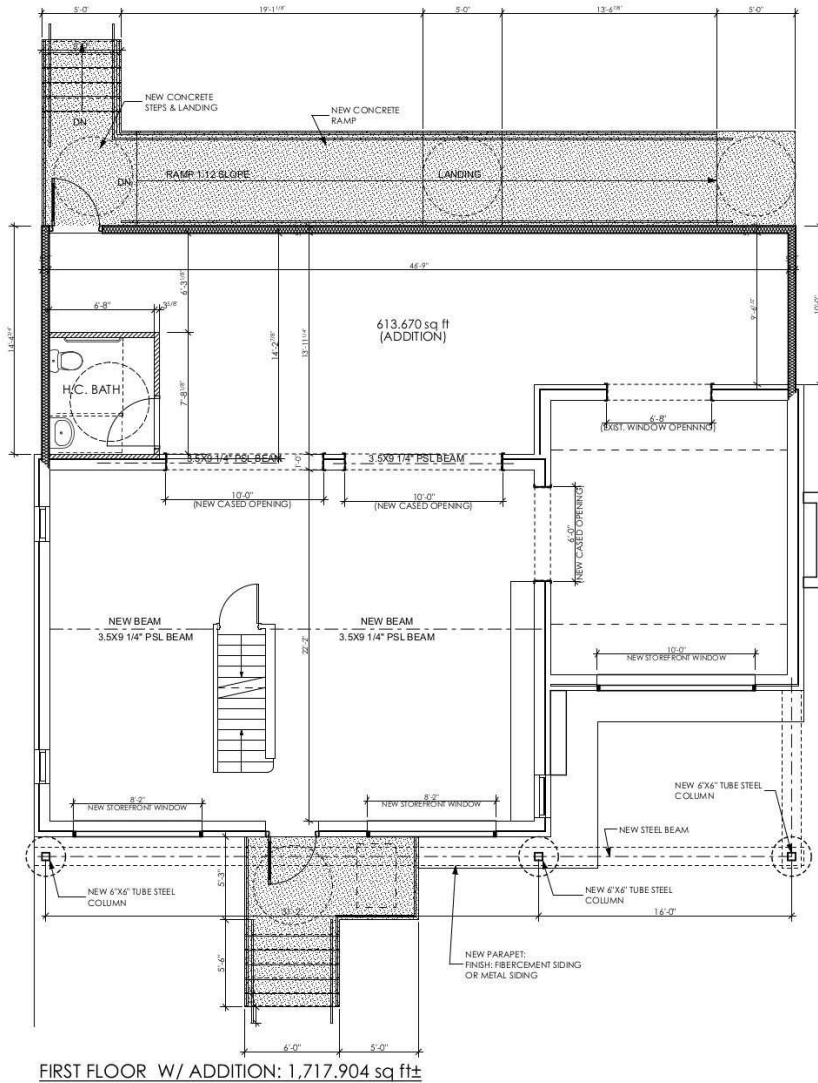


For More Information, Contact:

Andy Fox
afox@dsmre.com
302.283.1800 Office
302.229.1304 Cell

Alicia Fox
alicia@dsmre.com
302.283.1800 Office
302.419.5477 Cell

DSM Commercial
Real Estate Services
3304 Old Capitol Trail
Wilmington, DE 19808
dsmre.com

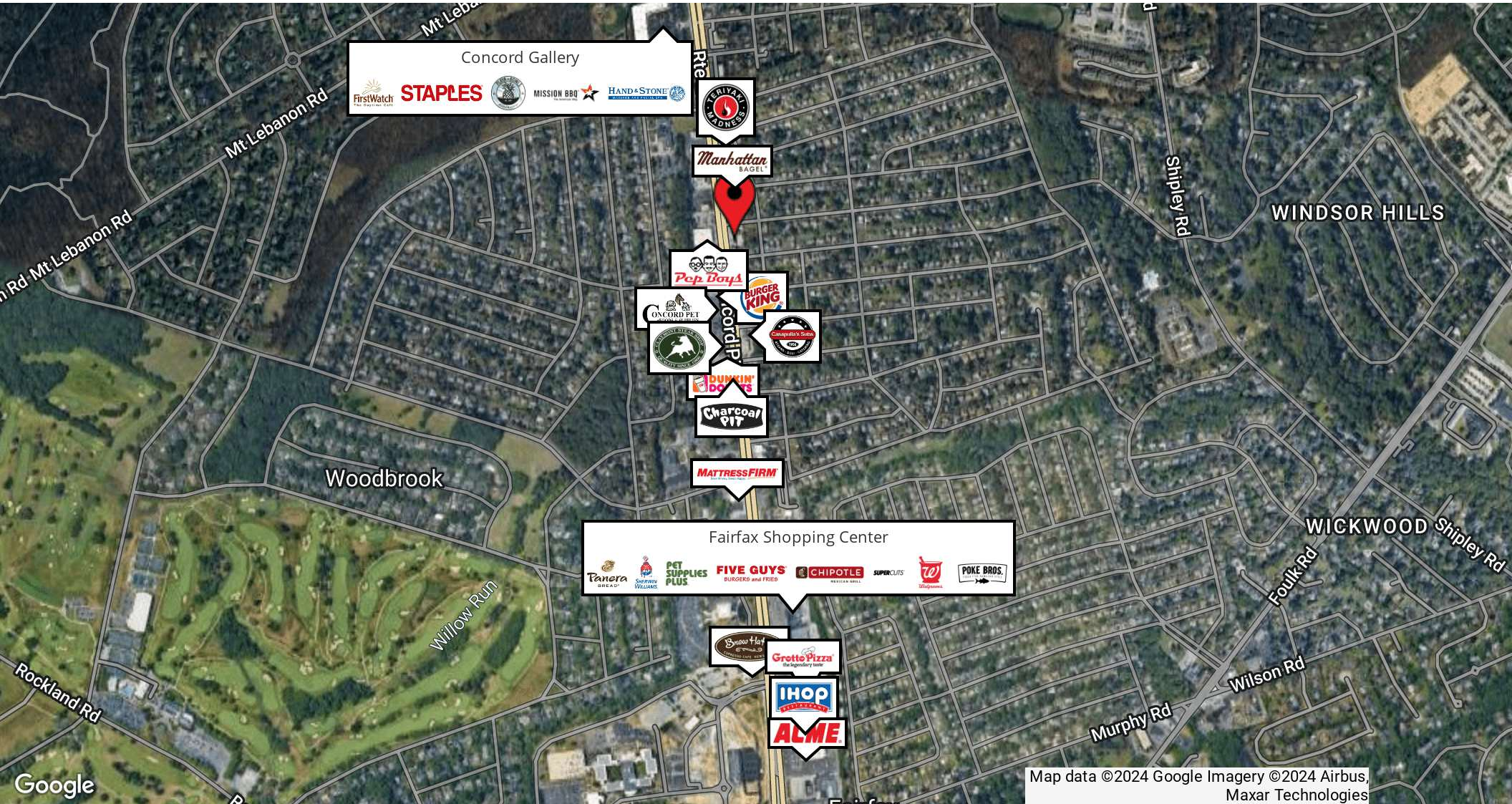


For More Information, Contact:

Andy Fox
afox@dsmre.com
302.283.1800 Office
302.229.1304 Cell

Alicia Fox
alicia@dsmre.com
302.283.1800 Office
302.419.5477 Cell

DSM Commercial
Real Estate Services
3304 Old Capitol Trail
Wilmington, DE 19808
dsmre.com



Concord Gallery
 FirstWatch
STAPLES
 MISSION BBQ
 HAND & STONE



Fairfax Shopping Center
 Panera
 PET SUPPLIES PLUS
FIVE GUYS
 BURGERD AND FRIED
 CHIPOTLE
 MEXICAN GRILL
 SUPERCLUTS
 W
 POKE BROS.



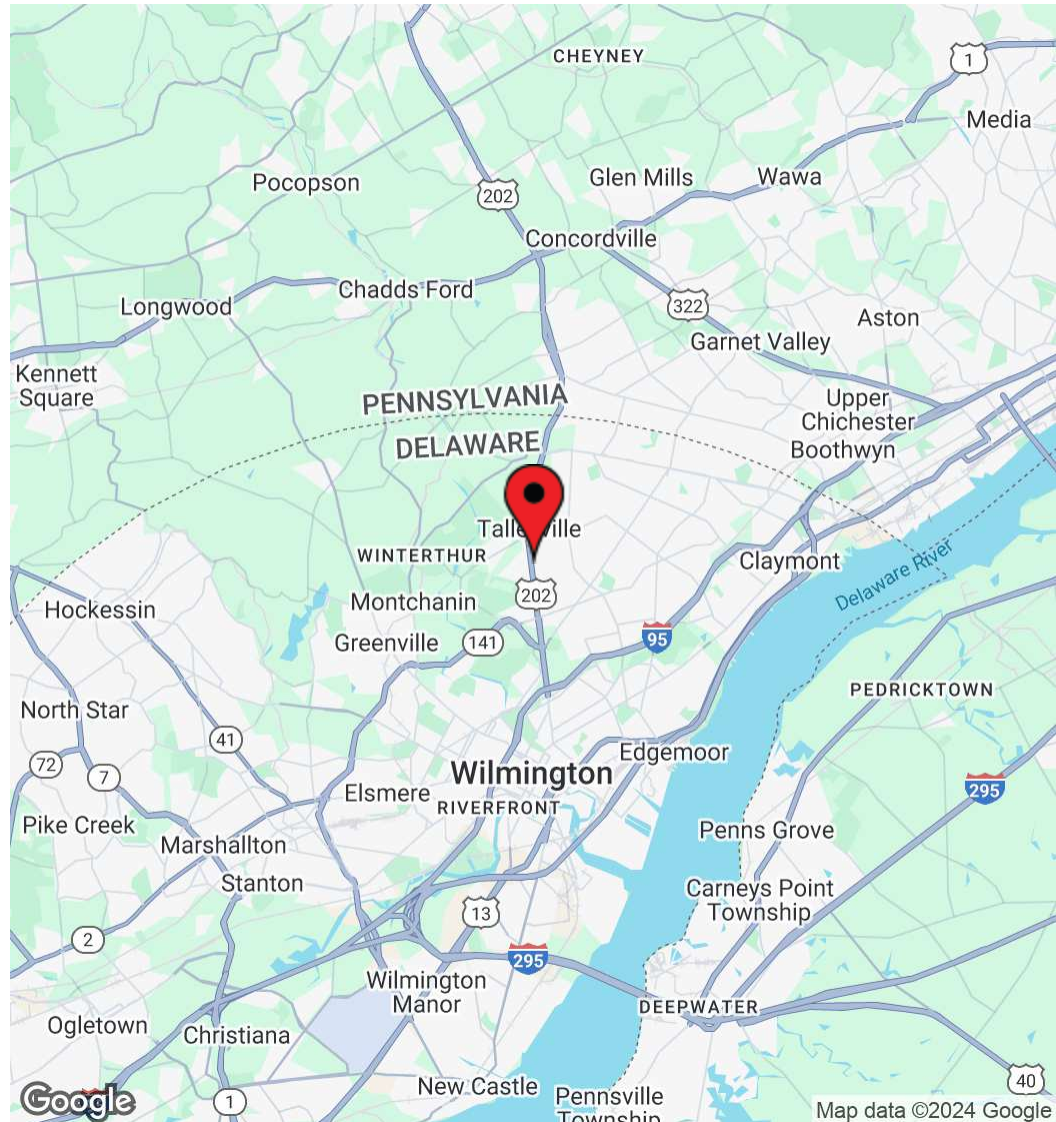
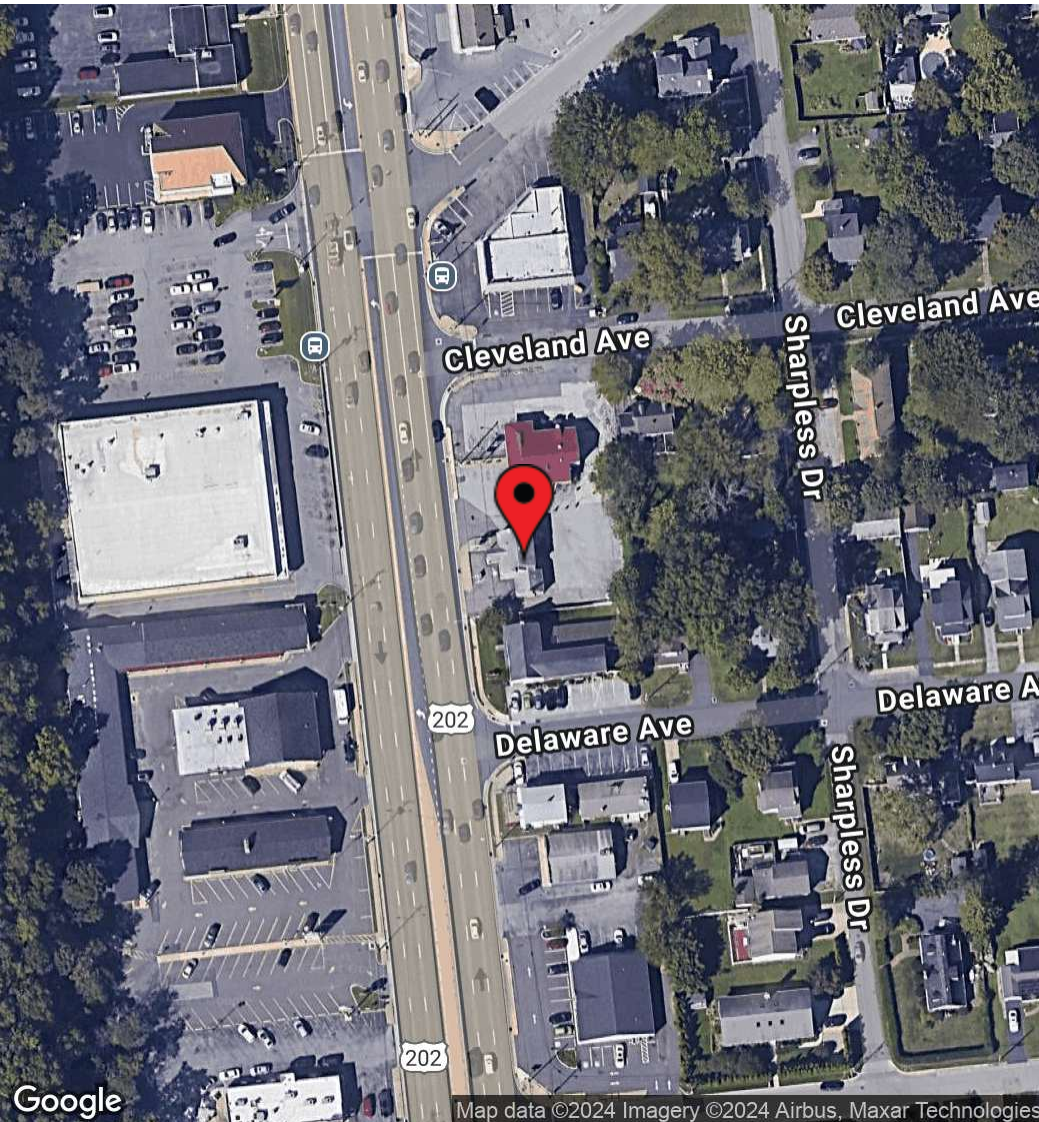
Map data ©2024 Google Imagery ©2024 Airbus, Maxar Technologies

For More Information, Contact:

Andy Fox
 afox@dsmre.com
 302.283.1800 Office
 302.229.1304 Cell

Alicia Fox
 alicia@dsmre.com
 302.283.1800 Office
 302.419.5477 Cell

DSM Commercial
 Real Estate Services
 3304 Old Capitol Trail
 Wilmington, DE 19808
 dsmre.com



For More Information, Contact:

Andy Fox
afox@dsmre.com
302.283.1800 Office
302.229.1304 Cell

Alicia Fox
alicia@dsmre.com
302.283.1800 Office
302.419.5477 Cell

DSM Commercial
Real Estate Services
3304 Old Capitol Trail
Wilmington, DE 19808
dsmre.com