





SUBJECT PROPERTY

PROPERTY HIGHLIGHTS

Major renovations complete in 2024 including new exterior paint, landscaping, and signage. Interior upgrades include new lobbies, new flooring and paint, artwork, building electronic directory, and lighting.

AVAILABLE: Suite 300 ±2,653 RSF

RATE: \$3.15 / SF Modified Gross

- » Premier 3-Story Medical Office Building
- » Located Across the Street from Los Alamitos Hospital
- » Excellent Retail Amenities
- » Close Proximity to 22/405/605 Freeways



3-Story Medical Office Building



Abundant Surface Parking



Excellent Proximity to 22, 405, & 605 Fwys

REAGAN ST

CHERRY ST

KATELLA AVE

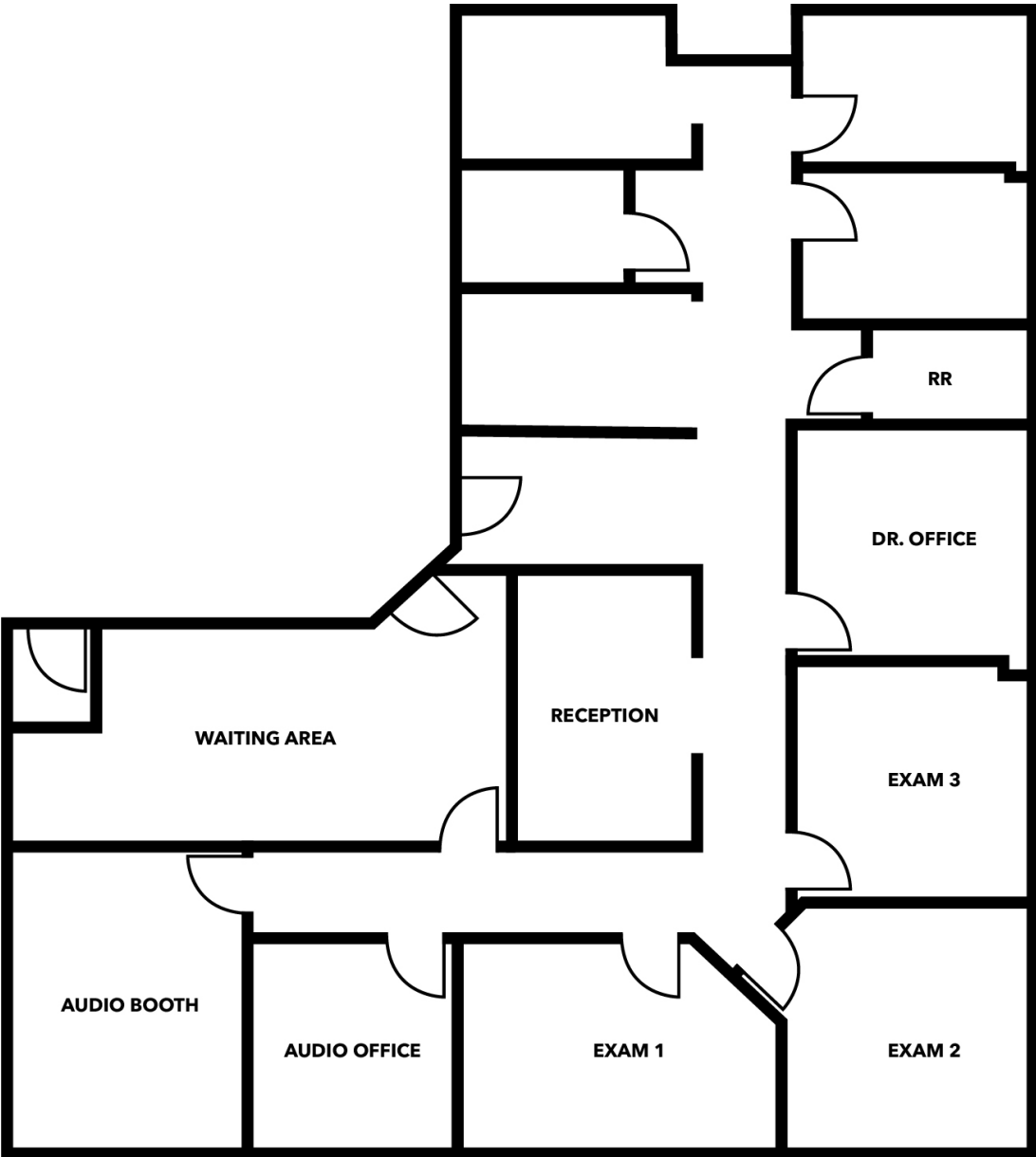
PROPERTY PHOTOS



PROPERTY PHOTOS



SUITE 300 FLOOR PLAN



This plan and its measurements are approximate and not up to scale.
It is the responsibility of the buyer/lessor to verify the property's measurements independently.

ABOUT LOS ALAMITOS, CA

- » Los Alamitos is located in Orange County, California, and was incorporated in March 1960.
- » The city is located at the border of the Los Angeles / Orange County, offering an ideal place for employers to provide a location that is easier for their employees to access who live in either county.
- » The city houses employers such as Epson America, Ganahl Lumber, Los Alamitos Medical Center, Arrowhead Products, and many more.
- » The city contains the Joint Forces Training Base and Army Airfield. Many young families relocate to the area due to the affluent neighborhoods that offer award-winning schools for all ages.
- » There are almost 2,000 businesses which include light manufacturing and wholesaler sales. Many retail establishments and restaurants line the City's main thoroughfares, contributing to the City's small town ambience.

Visit the city of Los Alamitos website:
<http://cityoflosalamitos.org>



Encompasses
±4.3 Square Miles



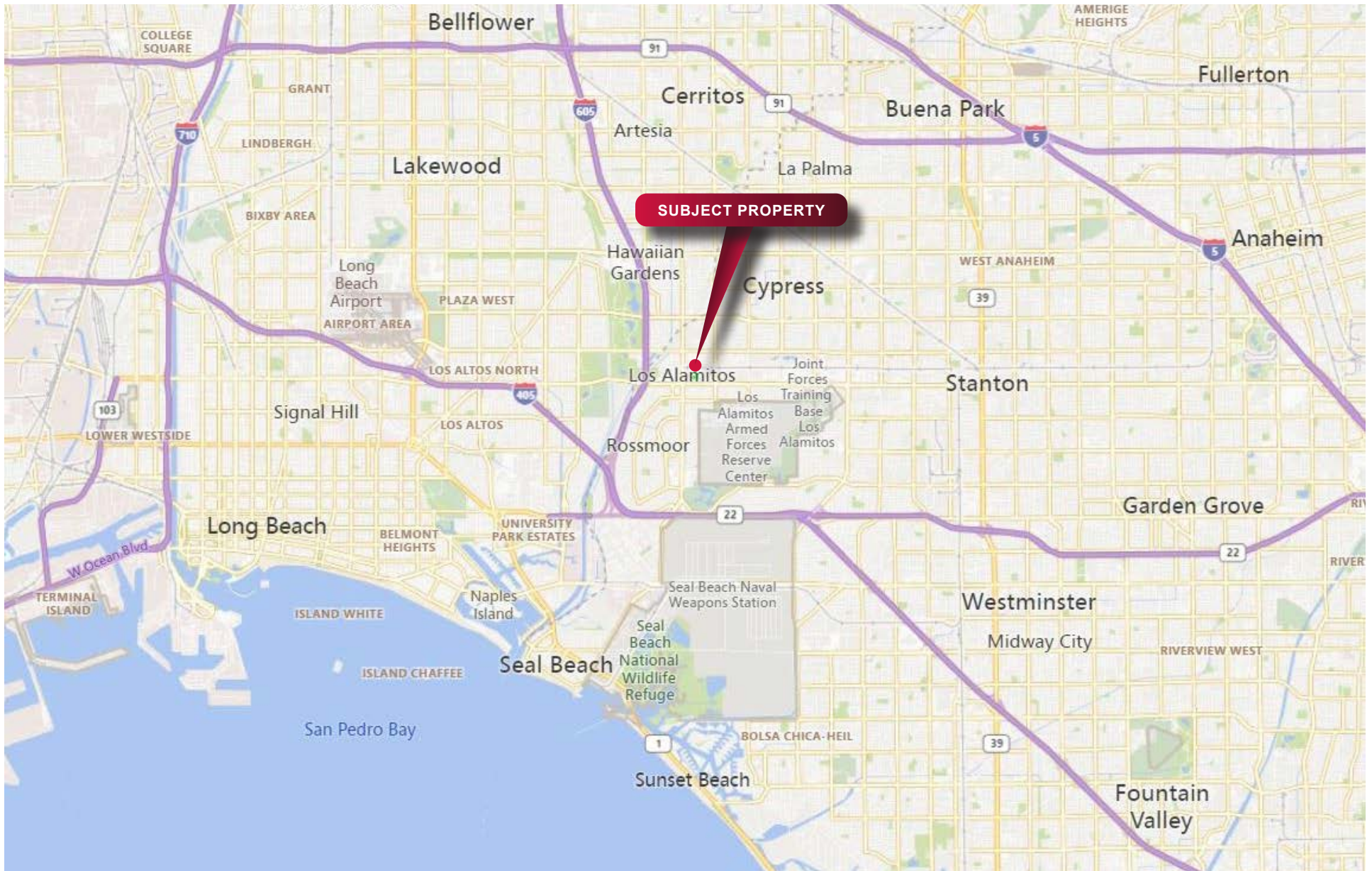
Population
±11,490
(2010 Census)



Median Annual
Household
Income \$76,528



LOCAL MAP



Copyright © Lee & Associates. All rights reserved. No part of this work may be reproduced or distributed without written permission of the copyright owner. The information contained in this report was gathered by Lee & Associates from sources believed to be reliable. Lee & Associates, however, makes no representation concerning the accuracy or completeness of such information and expressly disclaims any responsibility for any inaccuracy contained herein.



MEDICAL OFFICE FOR LEASE
10861 Cherry Street
Los Alamitos, California 90720

Local Expertise. International Reach. World Class.

Shaun McCullough, CCIM, SIOR

Principal | DRE 01380928

PH: 562.354.2517 | E: smccullough@leelalb.com

Jeff Coburn, CCIM, SIOR

Principal | DRE 01303169

PH: 562.354.2511 | E: jcoburn@leelalb.com

Coleman Kistner

Associate | DRE 02198995

PH: 562.354.2535 | E: ckistner@leelalb.com