

2932 HADDONFIELD RD, PENNSAUKEN, NJ 18110

+/- 2.78 ACRES

Development Opportunity/
Former Bank with Drive Thru

~38,000 Vehicles Per Day

Listing Contact:

Varsha Cyriac

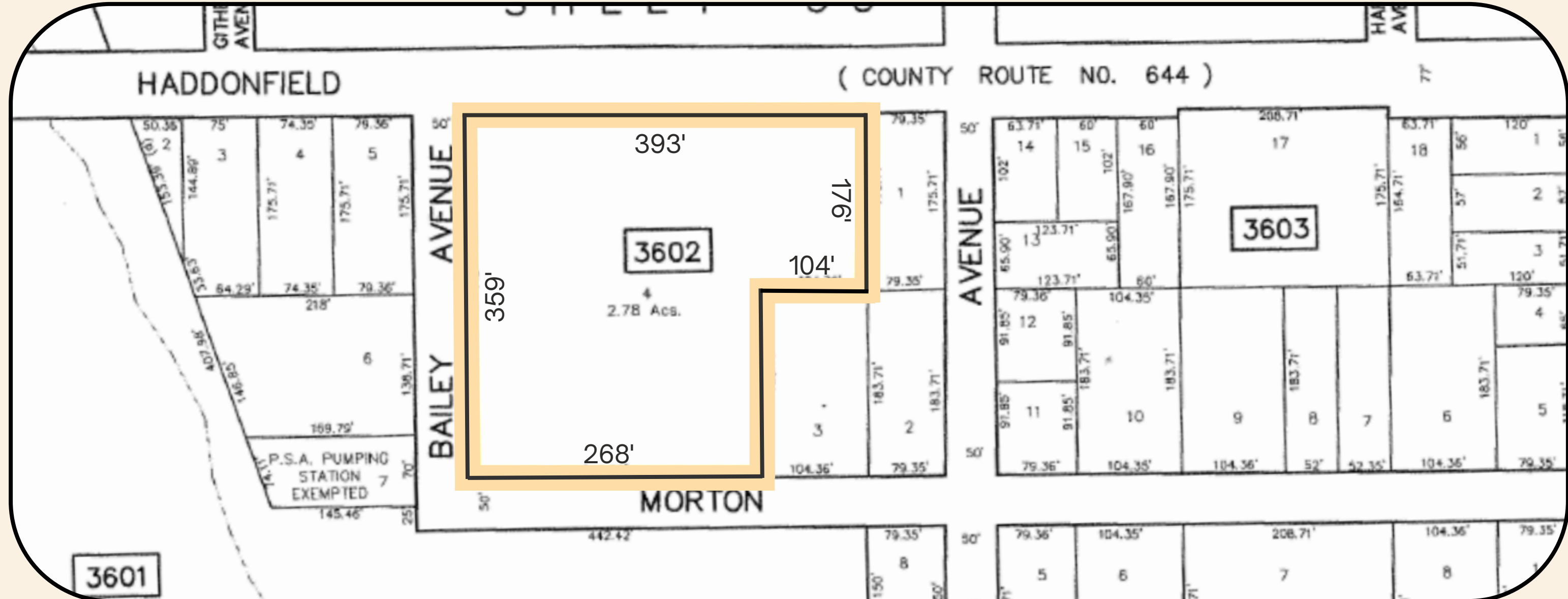
Real Estate Salesperson

(908) 938-6919

varsha.cyriac@proton.me

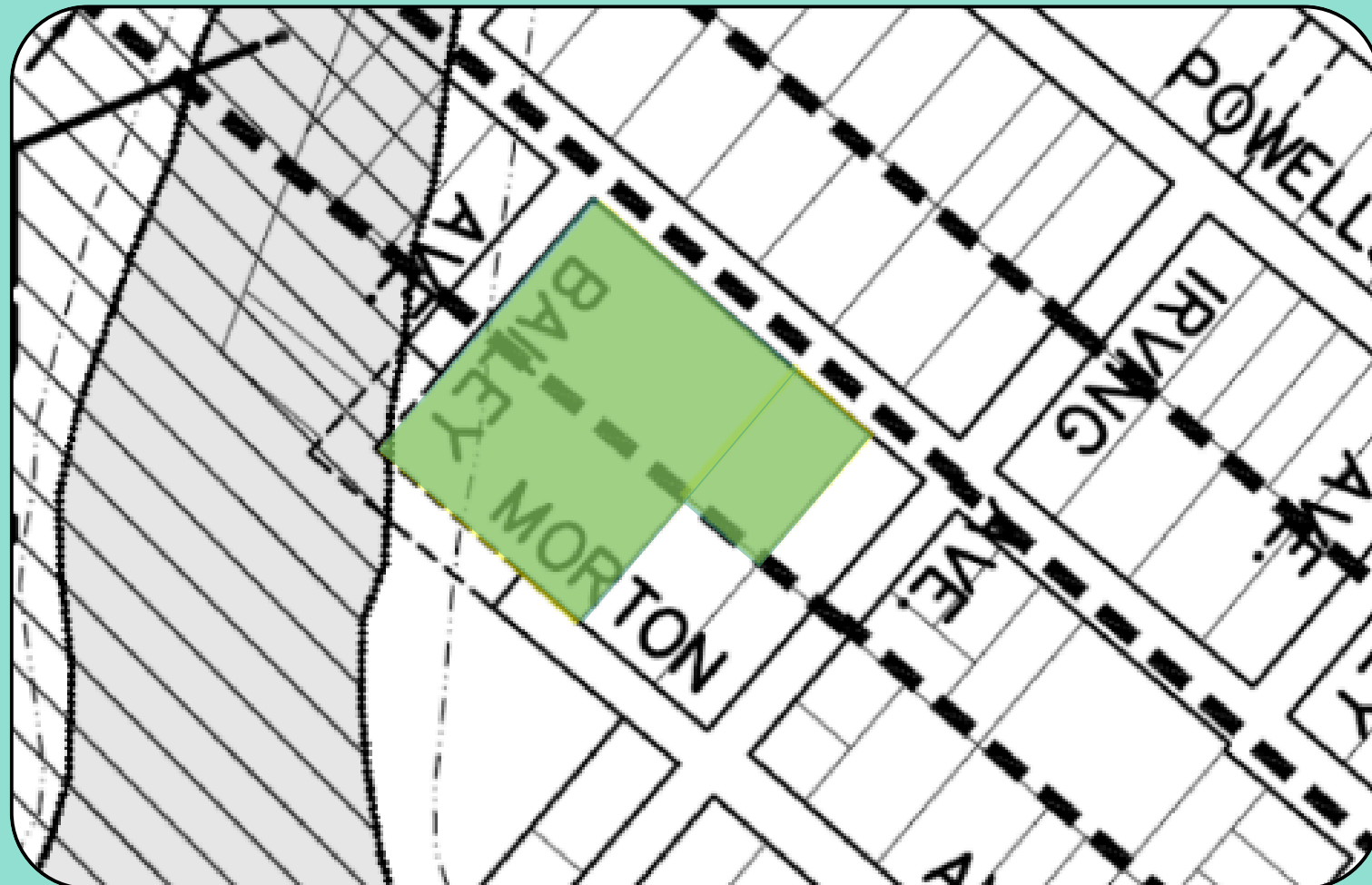


2.78 ACRES & GREAT ACCESS



2932 Haddonfield Rd. has **two established curb cuts** and **393 feet of frontage** at Haddonfield Road. The property includes a **drive-through** for easy customer service and high visibility.

MULTIPLE BY-RIGHT ZONING USES



P-1: Professional Office District

FRONT: 1.6 ACRES

Banking and Financial Offices

Medical/Dental Offices

Manufacturing Offices

Insurance Offices

Real Estate Offices

Other Offices

R-3: Residential District

BACK: 1.2 ACRES

Single Family Homes

Place of Worship

Agriculture

Club or Lodge

Passenger Station

Other Public Use

MINUTES FROM MAJOR LOCATIONS

6 MIN TO
CHERRY HILL
MALL

7 MIN TO
PENNSAUKEN
TRANSPORTATION
CENTER

15 MIN TO
PHILADELPHIA'S
CENTER CITY

NJ-73
NJ-90
US-130

Auto: UHAUL, Enterprise, Pep Boys

Retail and Grocery: Dollar General,
Dollar Tree, ShopRite

Food: Wawa, McDonald's,
Jersey Mike's, Chipotle, and more

