



Colliers



Office For Lease



Contact:

Tanner Riedel

Executive
+1 801 947 8363
tanner.riedel@colliers.com

Colliers

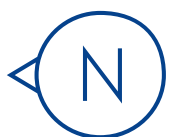
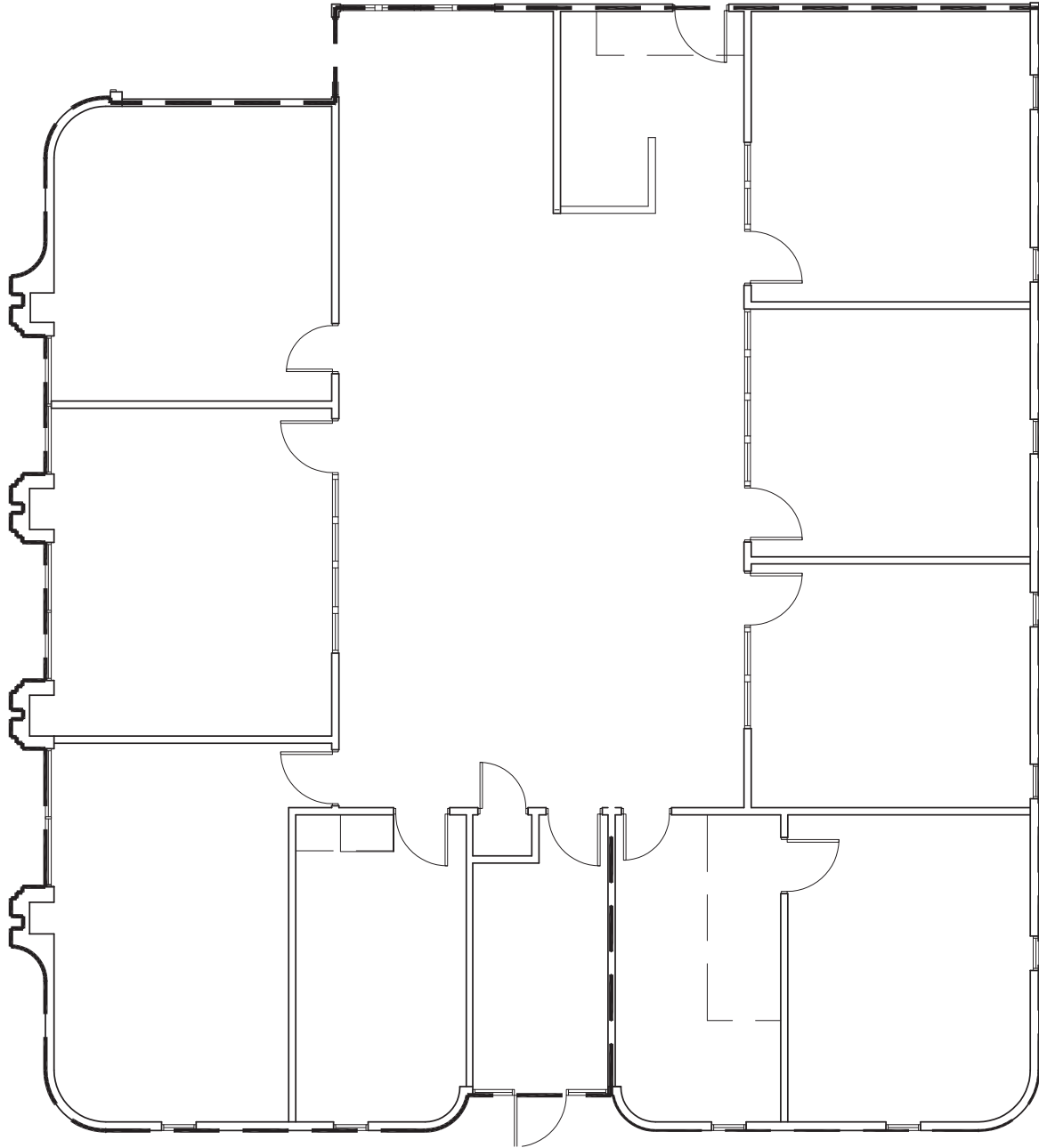
111 S. Main St., Suite 2200
Salt Lake City, UT 84111
Main: +1 801 947 8300
colliers.com

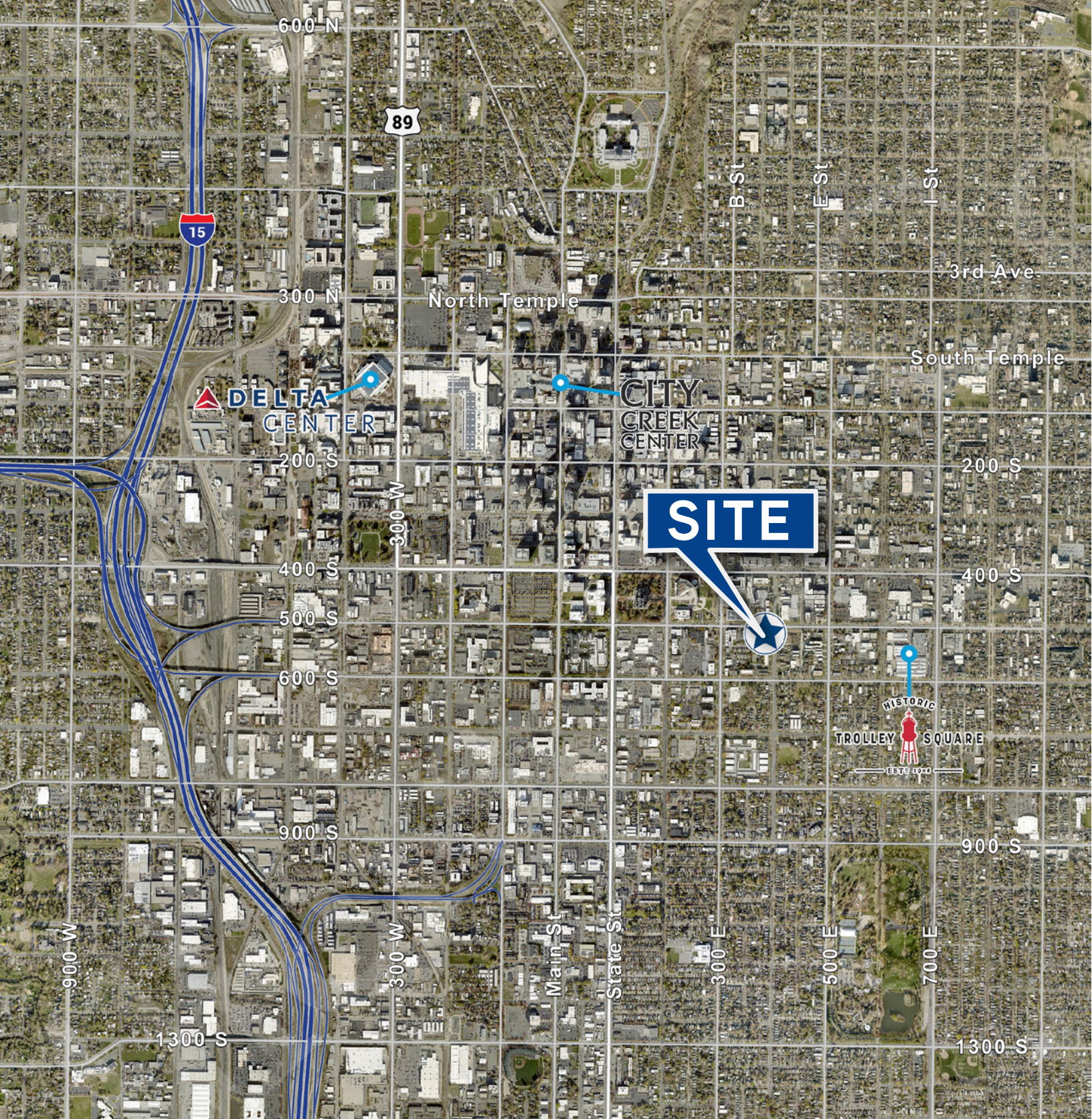
370 E. 500 S.
Salt Lake City, UT 84111

Property Highlights

- \$15.00 PSF, full service
- Suite 140: 3,909 SF
- Suite 140A: 1,955 SF
- Free partially covered parking available at 4/1,000 RSF
- Monument signage facing 500 south available
- Newly renovated common areas
- Fully built out - move-in ready space

Floor Plans





Colliers
111 S. Main St., Suite 2200
Salt Lake City, UT 84111
Main: +1 801 947 8300
colliers.com

Tanner Riedel
Executive
+1 801 947 8363
tanner.riedel@colliers.com

This document has been prepared by Colliers International for advertising and general information only. Colliers International makes no guarantees, representations or warranties of any kind, expressed or implied, regarding the information including, but not limited to, warranties of content, accuracy and reliability. Any interested party should undertake their own inquiries as to the accuracy of the information. Colliers International excludes unequivocally all inferred or implied terms, conditions and warranties arising out of this document and excludes all liability for loss and damages arising therefrom. This publication is the copyrighted property of Colliers International and/or its licensor(s). ©2024. All rights reserved.