



PREMIER
COMMERCIAL
PROPERTIES



For Lease

10057 Polk St NE, Blaine, MN 55434

PROPERTY DETAILS

- 6,000 square foot light industrial property for lease
- Comprised of 2,100 square feet of office and 3,900 square feet of warehouse
- Limited outside storage for service vehicles or similar
- 16 foot clear height
- 2 drive in doors, 10' and 14'
- Floor drains

PROPERTY DETAILS

LEASE FEE: \$6,000.00 , PLUS HEAT & ELECTRIC

FOR MORE INFORMATION, CONTACT

Marty Fisher/Mike Fisher
763.862.2005
mfisher@premiercommercialproperties.com
mikefisher@premiercommercialproperties.com



PREMIER
COMMERCIAL
PROPERTIES

For Lease

10057 Polk St NE | Blaine, MN | 55434

FOR MORE INFORMATION, CONTACT:

Marty Fisher | 763.862.2005 | mfisher@premiercommercialproperties.com





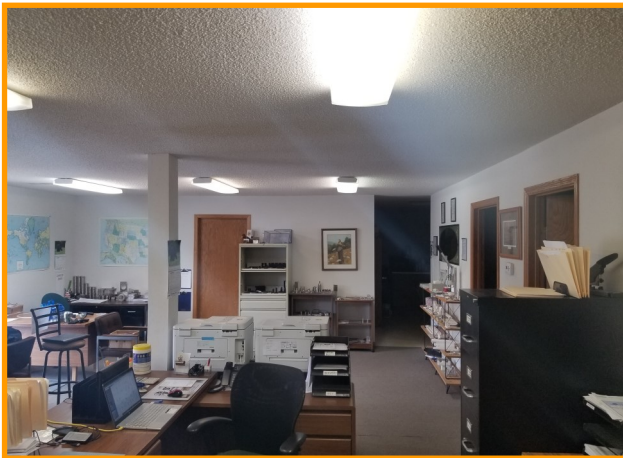
PREMIER
COMMERCIAL
PROPERTIES

For Lease

10057 Polk St NE | Blaine, MN | 55434

FOR MORE INFORMATION, CONTACT:

Marty Fisher | 763.862.2005 | mfisher@premiercommercialproperties.com





PREMIER
COMMERCIAL
PROPERTIES

For Lease

10057 Polk St NE | Blaine, MN | 55434

FOR MORE INFORMATION, CONTACT:

Marty Fisher | 763.862.2005 | mfisher@premiercommercialproperties.com

10057 Polk St NE, Blaine



- **3,900 square feet of warehouse**
- **2,100 square feet of office**
- **10' and 14' drive-in doors**
- **400 AMPS of 120/208 3 phase power**
- **some outside storage allowed, depends on what and how much**
- **Warehouse and office has heat and air conditioning**



PREMIER
COMMERCIAL
PROPERTIES

For Lease

10057 Polk St NE | Blaine, MN | 55434

FOR MORE INFORMATION, CONTACT:

Marty Fisher | 763.862.2005 | mfisher@premiercommercialproperties.com

