

820 JOE MANN BOULEVARD

MIDLAND, MICHIGAN

LAND FOR SALE

1.70 Acres Available



**SIGNATURE ASSOCIATES**  
KNOW SIGNATURE | KNOW RESULTS

**PRIME RETAIL PARCEL**



### PROPERTY FEATURES

- Approximately 1.70 acres available
- Zoned Regional Commercial
- Excellent frontage
- Utilities available at street
- Sale Price: \$950,000



For more information, please contact:

**JOE RIZQALLAH**

(616) 822 6310

jrizzqallah@signatureassociates.com

**SIGNATURE ASSOCIATES**

1188 East Paris Ave SE, Suite 220

Grand Rapids, MI 49546

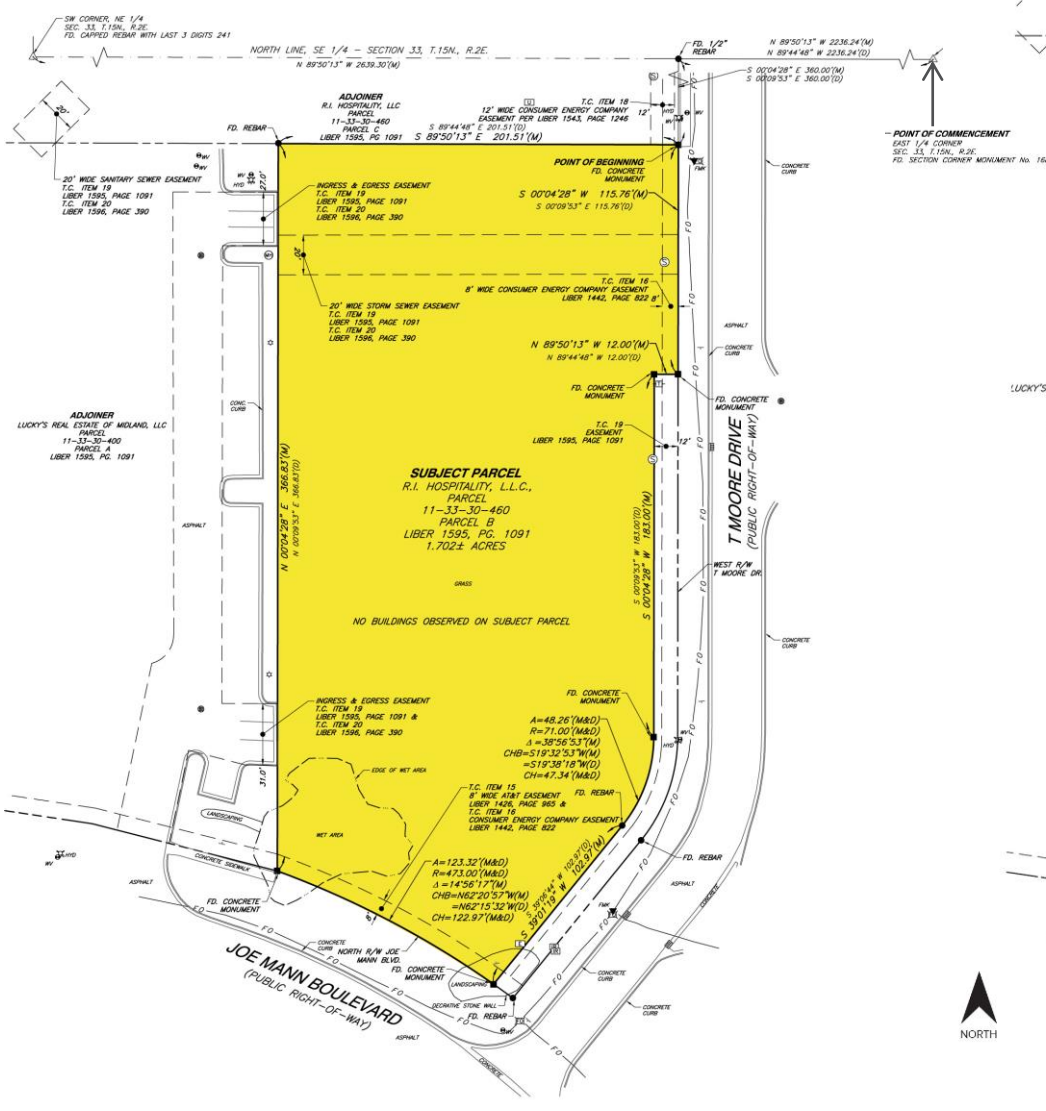
www.signatureassociateswm.com

# 820 Joe Mann Boulevard - Midland, Michigan

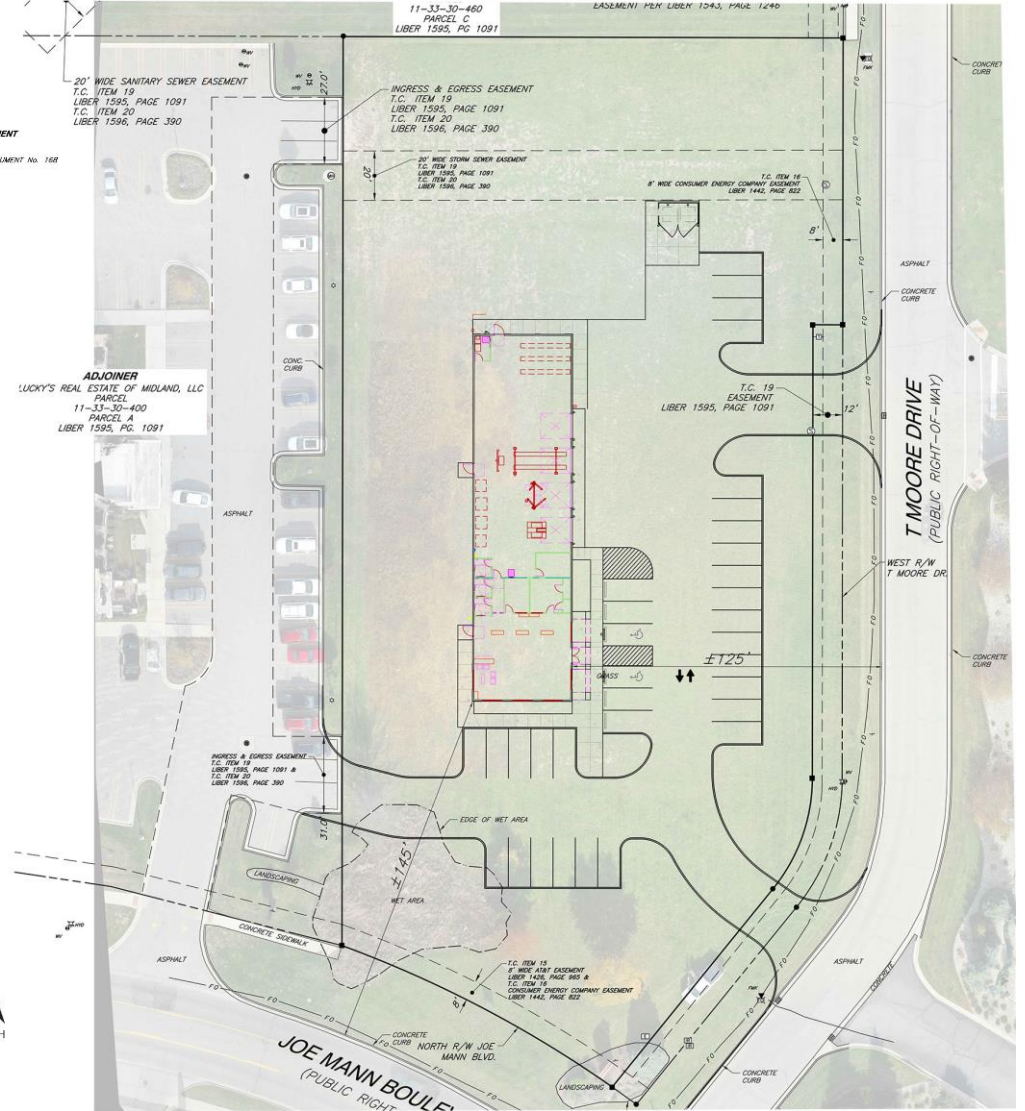
Land For Sale

1.70  
Acres  
AVAILABLE

Site Plan



Schematic Site Plan



For more information, please contact:  
**JOE RIZQALLAH**  
 (616) 822 6310  
 jrizzqallah@signatureassociates.com

**SIGNATURE ASSOCIATES**  
 1188 East Paris Ave SE, Suite 220  
 Grand Rapids, MI 49546  
 www.signatureassociateswm.com

Information is subject to verification and no liability for errors or omissions is assumed. Price is subject to change and listing withdrawal.

# 820 Joe Mann Boulevard - Midland, Michigan

Land For Sale

1.70  
Acres  
AVAILABLE

Expanded Aerial



For more information, please contact:  
**JOE RIZQALLAH**  
(616) 822 6310  
jrizzqallah@signatureassociates.com

**SIGNATURE ASSOCIATES**  
1188 East Paris Ave SE, Suite 220  
Grand Rapids, MI 49546  
www.signatureassociateswm.com

# 820 Joe Mann Boulevard - Midland, Michigan

Land For Sale

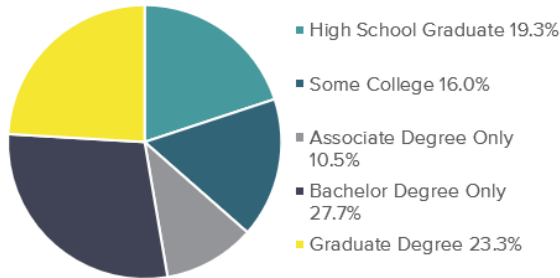
1.70  
Acres  
AVAILABLE

## Demographics

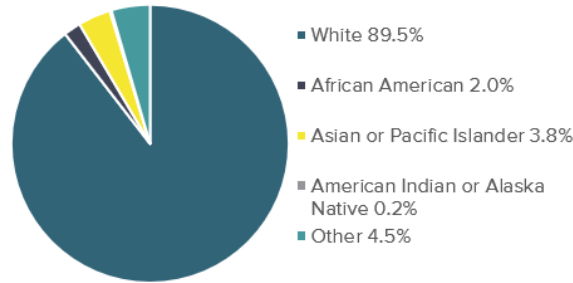
### Daytime Demos Within 3 Miles

1,093 Total Business  
11,453 Total Employees

### Education within 3 Miles



### Race within 3 Miles



### DEMOGRAPHICS (2023 ESTIMATES)

	HOUSEHOLDS	AVERAGE HOUSEHOLD INCOME	HOUSEHOLD EXPENDITURES ANNUALLY	HOUSEHOLD EXPENDITURES MONTHLY
1 MILE	1,276	\$204,010	\$153.55M	\$10,031
3 MILES	14,057	\$138,407	\$1.24B	\$7,352
5 MILES	20,931	\$122,321	\$1.68B	\$6,705
10 MILES	34,493	\$115,567	\$2.68B	\$6,467

## Area Information



Midland is a city in and the county seat of Midland County, Michigan, in the United States. It is the principal city of the Midland Metropolitan Statistical Area, part of the larger Saginaw-Midland-Bay City Combined Statistical Area.

The city's major shopping district is located north of town, on Eastman Avenue near US-10. There are several big-box stores located here, as well as the Midland Mall. Midland's downtown, on Main Street, includes local restaurants, artist co-ops, and local retail.

It's hard to decide what's most captivating about Midland: its thriving arts scene, abundant natural beauty, or the mid-century moderns you'll find dotting every city street. And with 400 architectural gems, plus an app to help you track them down — it starts unfolding from the moment you hit town.

Lots of outdoor rec, safe neighborhoods, convenience of shopping and fairly affordable housing. It's a great place that offers comforts and safety without many issues. The housing market is fast moving housing lasting a month or a few weeks on the market in desirable areas.

For more information, please contact:

**JOE RIZQALLAH**

(616) 822 6310

jrizzqallah@signatureassociates.com

**SIGNATURE ASSOCIATES**

1188 East Paris Ave SE, Suite 220

Grand Rapids, MI 49546

www.signatureassociateswm.com