

**Multi-Tenant  
Medical  
Opportunity**

# 11717 BERNARDO PLAZA CT

SAN DIEGO, CA 92128

**MARC POSTHUMUS**

858-401-3898

[marc.posthumus@cast-cap.com](mailto:marc.posthumus@cast-cap.com)

License #01440118

**CAST**  
CAPITAL PARTNERS



# OFFERING SUMMARY

## OFFERING

1,700 - 7,200 SF Multi-Tenant  
Medical Investment Opportunity

## BUILDING ADDRESS

11717 Bernardo Plaza Court, San  
Diego, CA 92128

## LOT SIZE

Office Condominium

## YEAR BUILT / RENOVATED

1983 / Renovated in 2012

## PARKING

Ratio 5.5/1,000

## ZONING

CC-2-3

## DESCRIPTION

Single-story medical office  
condominium

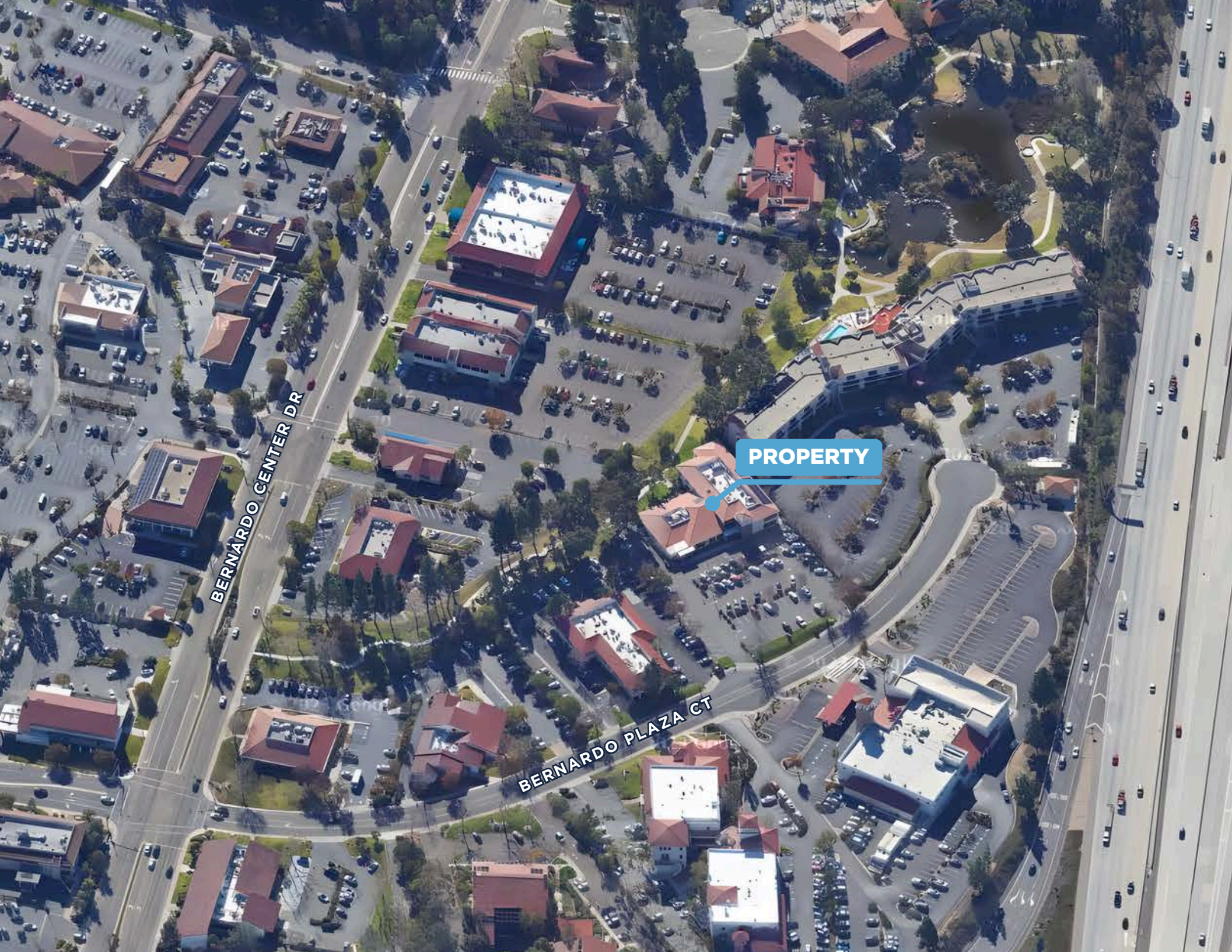
## ASKING PRICE

**Suite 100**  
5,500 SF - Negotiable

**Suite 102**  
1,700 SF - \$1,250,000







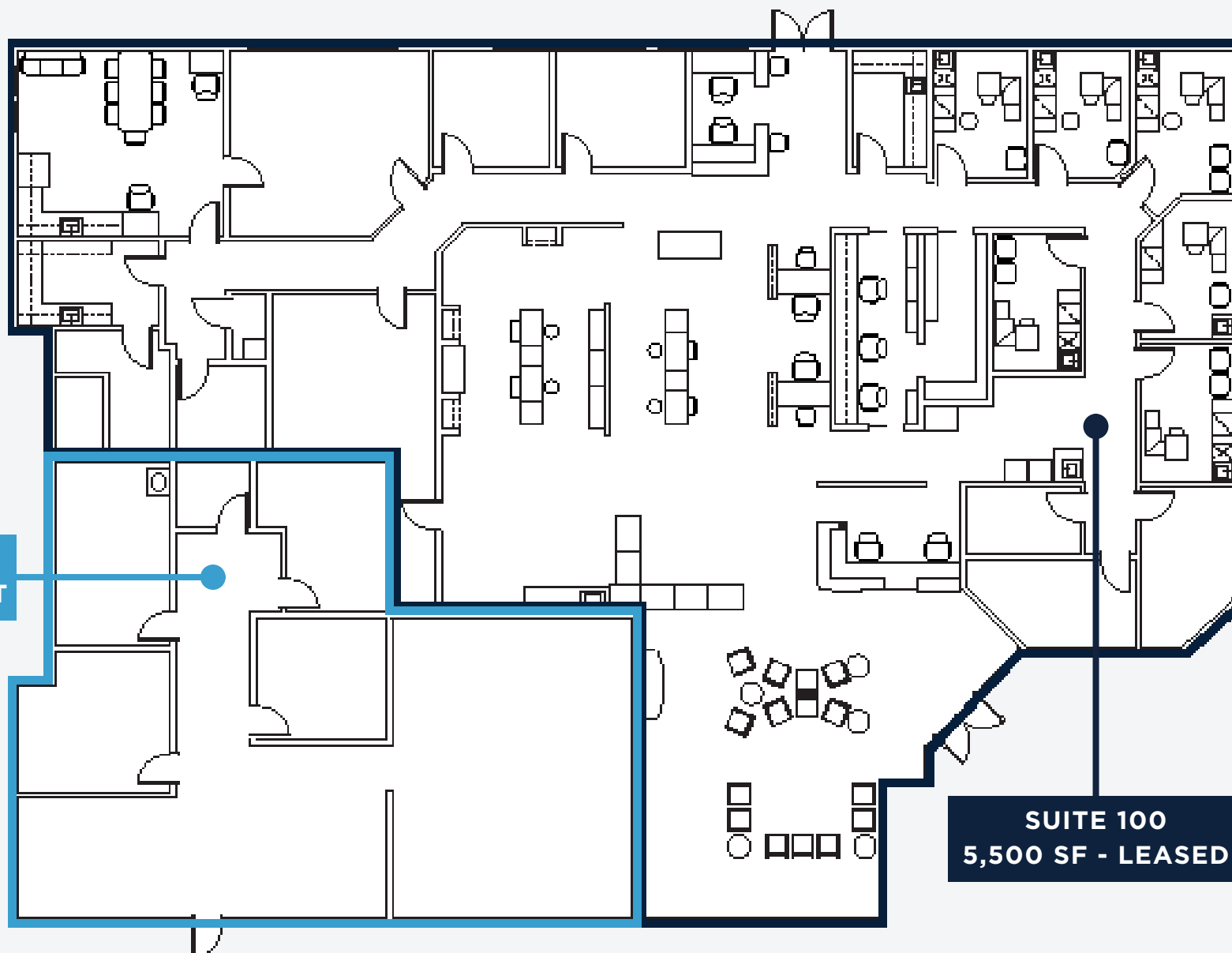
BERNARDO CENTER DR

BERNARDO PLAZA CT

PROPERTY



## FLOOR PLAN



**SUITE 102**  
**1,700 SF - VACANT**

**SUITE 100**  
**5,500 SF - LEASED**

# RANCHO BERNARDO AT A GLANCE



**171,047**  
POPULATION



**\$141,409**  
AVE. HH INCOME



**\$789,000**  
MEDIAN  
PROPERTY VALUE



**66,391**  
# OF EMPLOYEES



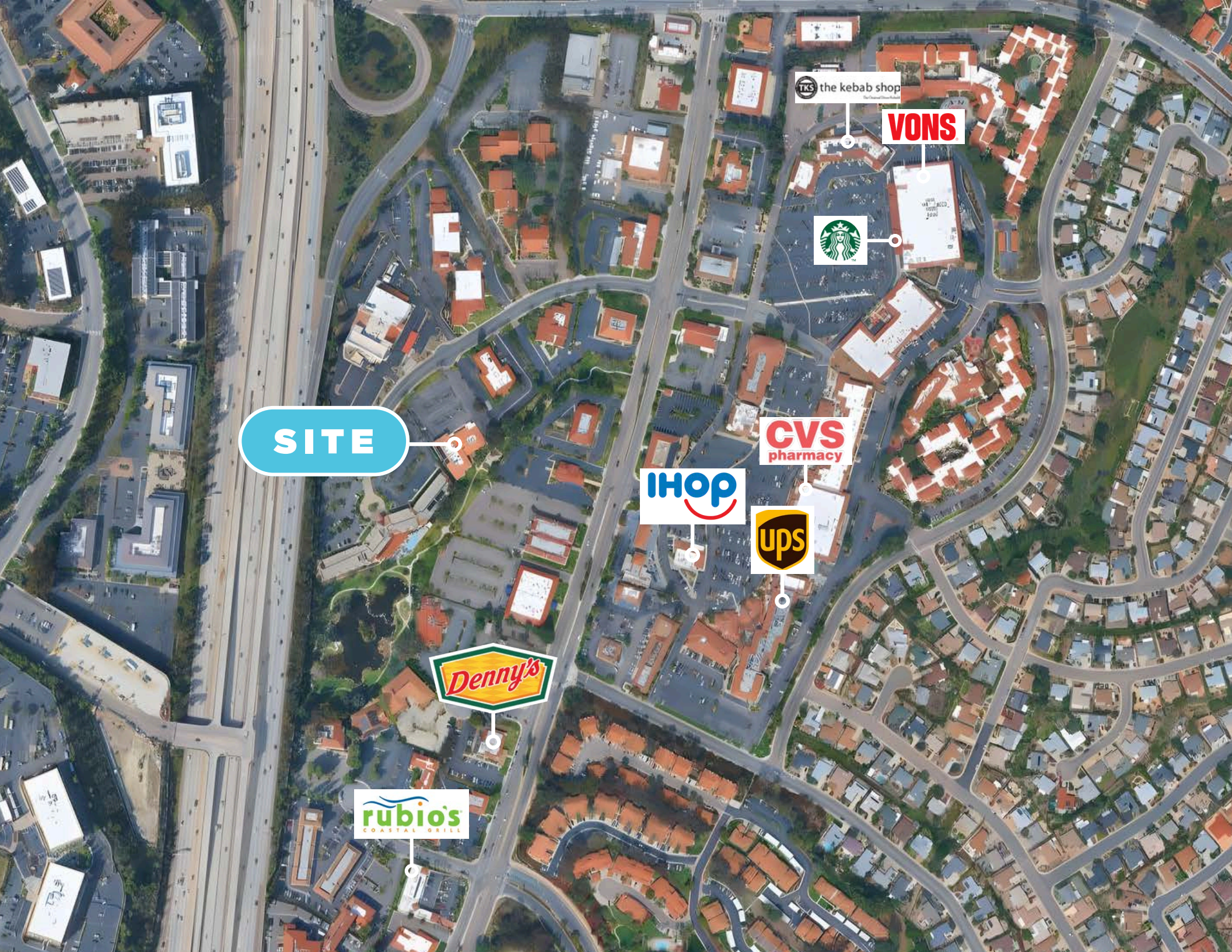
**65**  
WALK SCORE



**0.5**  
MILES TO I-15







**SITE**

TKS the kebab shop

**VONS**



**CVS**  
pharmacy

**ihop**



**rubio's**  
COASTAL GRILL



# SALE COMPARABLES



## KEARNY MESA SUBMARKET

7695 Cardinal Ct, San Diego, CA 92123

1,518 SF | \$1,029,000 | \$678/SF



## DEL MAR HTS/CARMEL VALLEY SUBMARKET

6191 Village Way, Corallina San Diego, CA 92130

2,490 SF | \$2,380,500 | \$956/SF



## UPTOWN WEST/PARK WEST SUBMARKET

4096 Park Blvd, San Diego, CA 92103

2,374 SF | \$1,545,000 | \$651/SF



## CARMEL MOUNTAIN RANCH SUBMARKET

15717 Bernardo Heights Pky - Rancho  
Bernardo Heights, San Diego, CA 92128

4,882 SF | \$3,325,000 | \$681/SF



## NORTH BEACH CITIES SUBMARKET

543 Encinitas Blvd - Bldg #6  
Encinitas, CA 92024

1,482 SF | \$958,000 | \$646/SF



## NORTH BEACH CITIES SUBMARKET

191 Calle Magdalena - Santa Fe Business Park  
(Part of a 2-Condo Sale) Encinitas, CA 92024

2,619 SF | \$1,991,000 | \$760/SF



FOR MORE  
INFORMATION,  
PLEASE CONTACT

**MARC POSTHUMUS**

858-401-3898

[marc.posthumus@cast-cap.com](mailto:marc.posthumus@cast-cap.com)

License #01440118

**CAST**  
CAPITAL PARTNERS

5090 Shoreham Place Suite 100  
San Diego, CA 92122  
[information@cast-cap.com](mailto:information@cast-cap.com)  
619-308-6680  
[www.Cast-Cap.com](http://www.Cast-Cap.com)

Copyright ©2025 CAST Capital Partners. All rights reserved. The information contained herein was obtained from sources deemed reliable. No warranties or representations, expressed or implied, are made as to the accuracy of the information contained herein, and same is submitted subject errors, omissions, change of price, rental or other conditions, withdrawal without notice, and to any special listing conditions imposed by our principals. This information is given with the understanding that all negotiations relating to the purchase, renting or leasing of the property described herein shall be conducted through CAST Capital Partners.

