

191,150 SF Available For Sublease



2311 Boswell Road

Chula Vista, CA 91914



**191,150 SF
Available**



**Excellent
Loading**



**Close Proximity
to I-5 & I-15**



**Ample
Parking**



**Full Building
Circulation**

Please contact

Ryan Bos

+1 310 962 1123
ryan.bos@kbcadvisors.com
Lic #01842405

Colin MacMillan

+1 626 825 8700
colin.macmillan@kbcadvisors.com
Lic #02163693

Eric Daschbach

+1 562 882 1273
eric.daschbach@kbcadvisors.com
Lic #01809542

Greg Pieratt

+1 619 995 7241
gpieratt@lee-associates.com
Lic #01438576

KBCADVISORS



LEE & ASSOCIATES
COMMERCIAL REAL ESTATE SERVICES

Property Specifications

2311 Boswell Road, Chula Vista, CA

191,150 SF
AVAILABLE

4,762 SF
OFFICE

1989
YEAR BUILT

26'
CEILING
HEIGHT

42
DOCK HIGH
DOORS

4
DRIVE-INS

2.00/1,000
PARKING
RATIO

8.88
USEABLE
ACRES

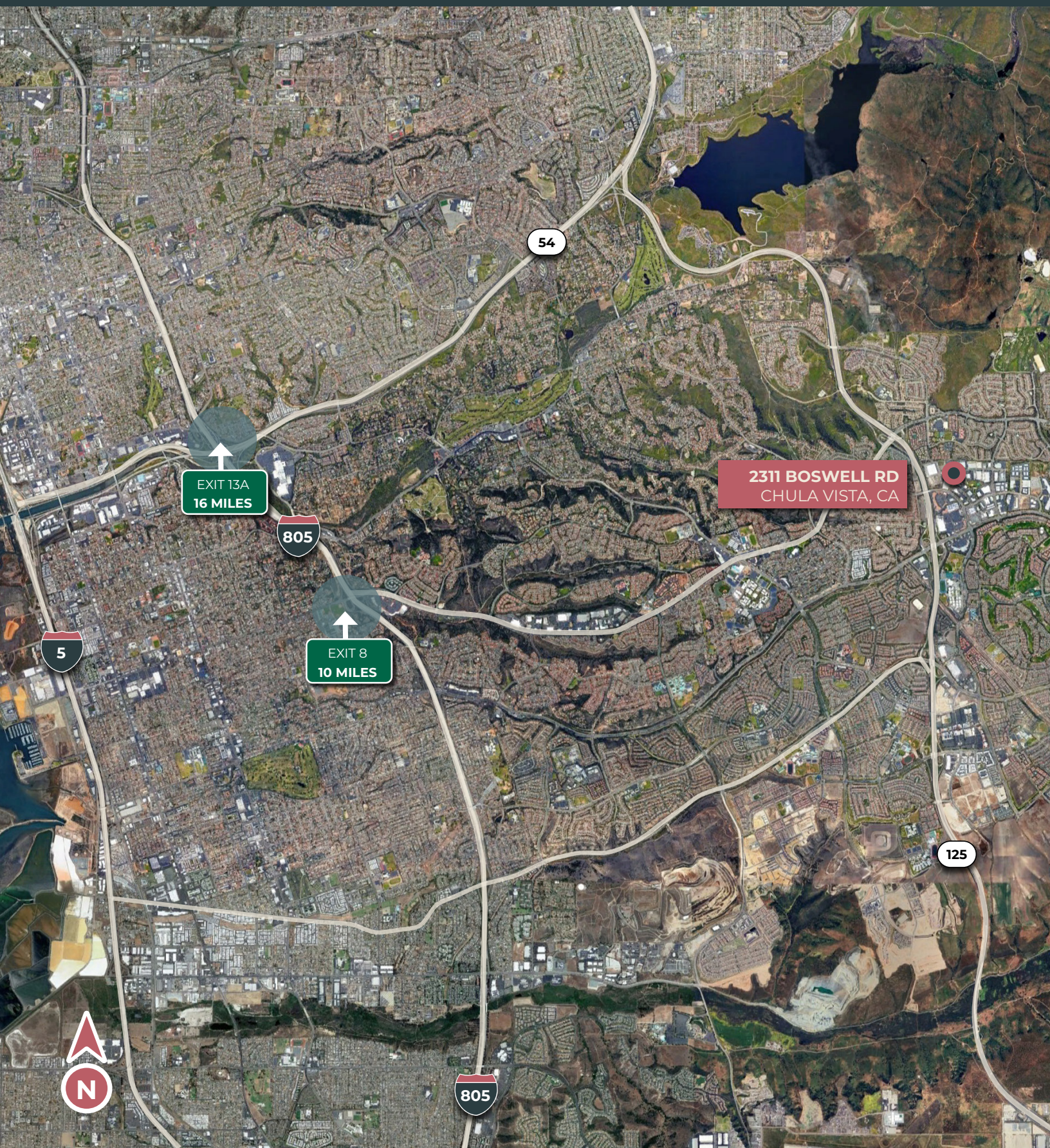
ILP
ZONING

WET
SPRINKLERS



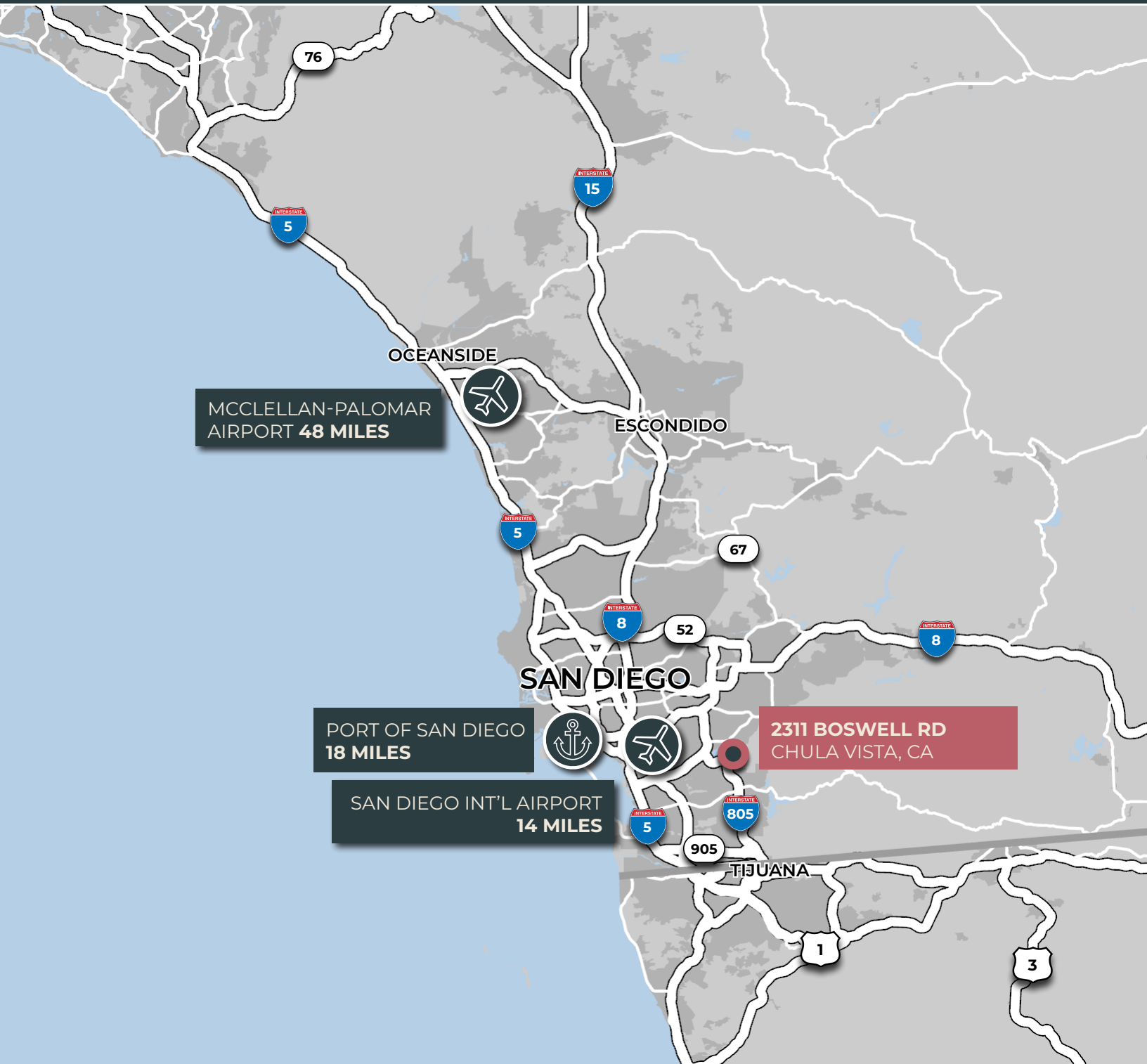
Close Proximity to I-805 & I-5

2311 Boswell Road, Chula Vista, CA



Premier Regional Connectivity

2311 Boswell Road, Chula Vista, CA



KBCADVISORS

LEE & ASSOCIATES
COMMERCIAL REAL ESTATE SERVICES

© 2023 KBC ADVISORS This information has been obtained from sources believed to be reliable but has not been verified for accuracy or completeness, and KBC Advisors disclaims any guarantees, warranties or representations, express or implied, as to the completeness or accuracy as to the information contained herein. You should conduct a careful, independent investigation of the property and verify all information. Any reliance on this information is solely at your own risk. The KBC ADVISORS logo is a service mark of KBC ADVISORS. All other marks displayed on this document are the property of their respective owners. Photos herein are the property of their respective owners. Use of these images without the express written consent of the owners is prohibited.