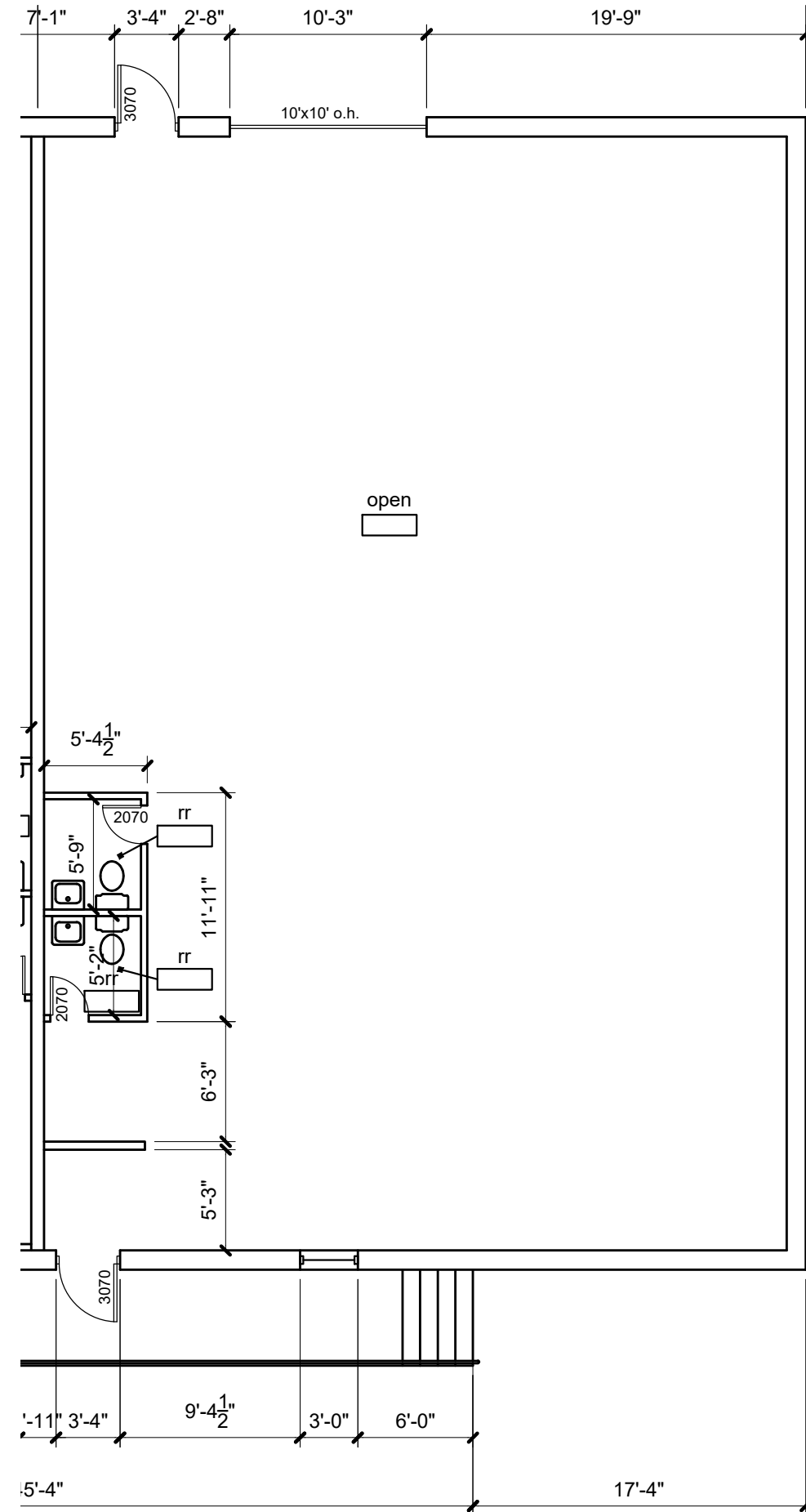
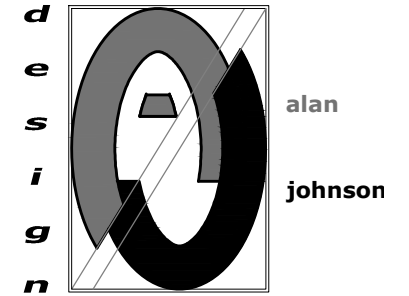


2 | key plan
 scale: 1/32" = 1'-0"
 NORTH



1 | floor plan - Suite B
 scale: 1/8" = 1'-0"
 NORTH



alan johnson design, llc
 700 w. 47th st. #200
 kansas city, missouri 64112
 w 816.412.8455
 e alan@alanjohnsondesign.com

an as-built drawing for
Prism Real Estate
 5100 Merriam Drive - Suite B
 Merriam, Kansas

DATE 04.08.22
 DRAWN BY ajd
 CHECKED BY ajd
 REVISIONS

NO.	DESCRIPTION

SHEET NUMBER
A1.1
 DRAWING TYPE
 as-built
 CAD FILE
 5100 Merriam Drive
 PROJECT NUMBER
 13005-h