



AVAILABLE

Suite 200: 2,578 SF

Suite 210: 2,352 SF

Suite 200+210: 4,930 SF

Suite 220: 2,386 SF

PROPERTY HIGHLIGHTS

- Walkable town center location! Surrounded by restaurants, retail, and residences.
- Secure Entry building on the corner of Century Blvd. and Crystal Rock Dr.
- Lots of natural light! Corner suites with great window lines.
- Functional buildouts with multiple offices, reception and kitchenettes.
- High-end dental office suite available.
- One block from the Germantown Library & Blackrock Center for the Arts.
- 0.5 miles to I-270 Exit 15

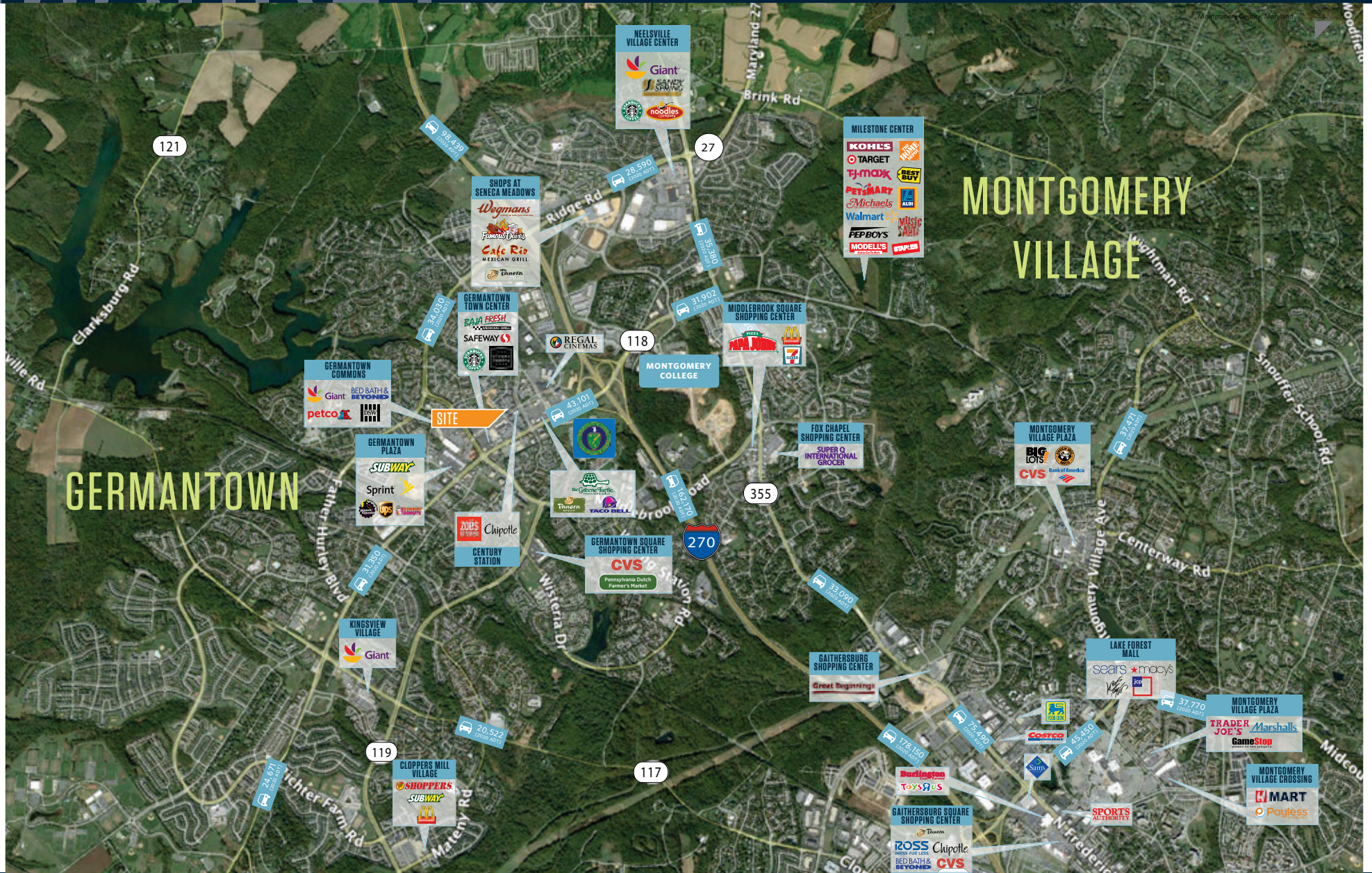
Lucas Glaeser
lglaeser@klnb.com
301.265.5614

Robert Pugh
rpugh@klnb.com
301.222.0211

MARKET

19873 CENTURY BOULEVARD

GERMANTOWN, MD 20874



Lucas Glaeser
lglaeser@klnb.com
301.265.5614

Robert Pugh
rpugh@klnb.com
301.222.0211

klnb

NEARBY

19873 CENTURY BOULEVARD

GERMANTOWN, MD 20874



Lucas Glaeser
lglaeser@klnb.com
301.265.5614

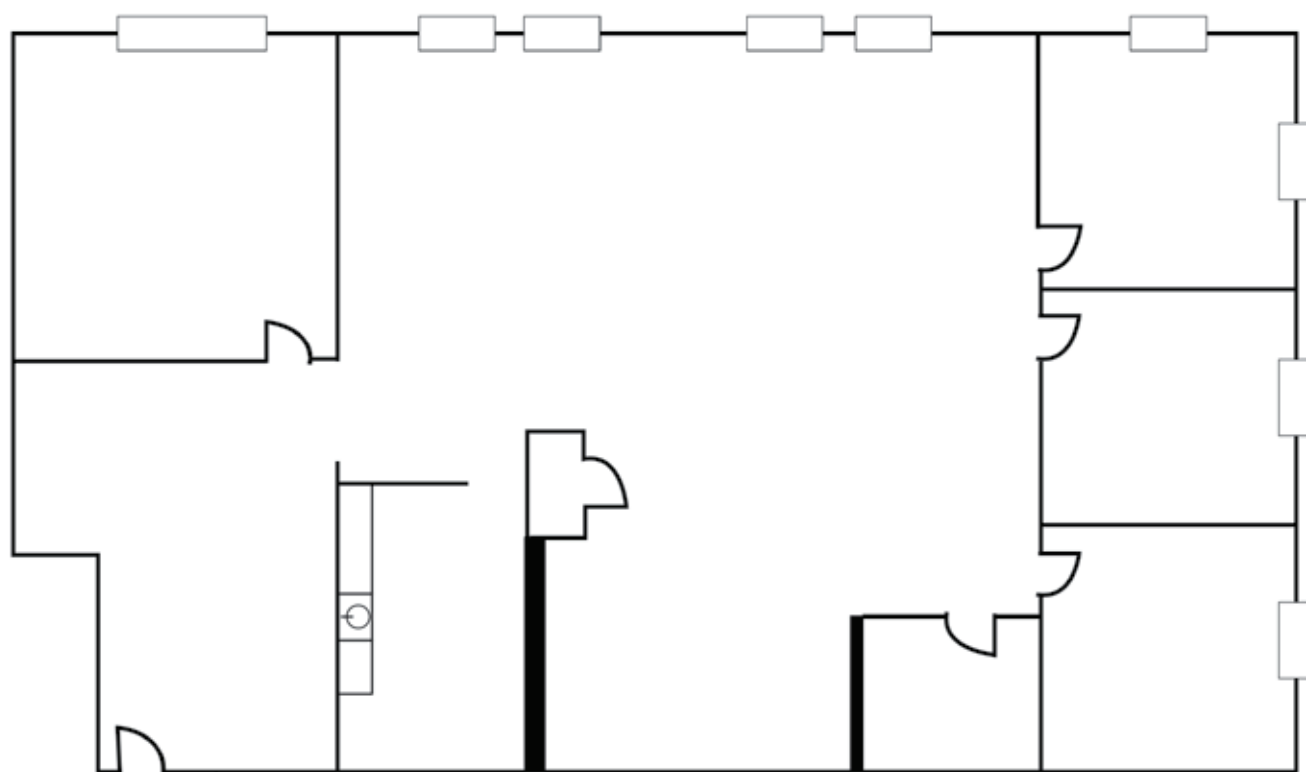
Robert Pugh
rpugh@klnb.com
301.222.0211

klnb


FLOOR PLAN

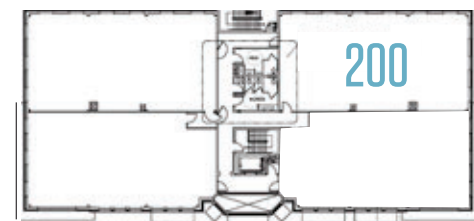
19873 CENTURY BOULEVARD

GERMANTOWN, MD 20874



Suite 200 | 2,578 SF

 = window



Lucas Glaeser
lglaeser@klnb.com
301.265.5614

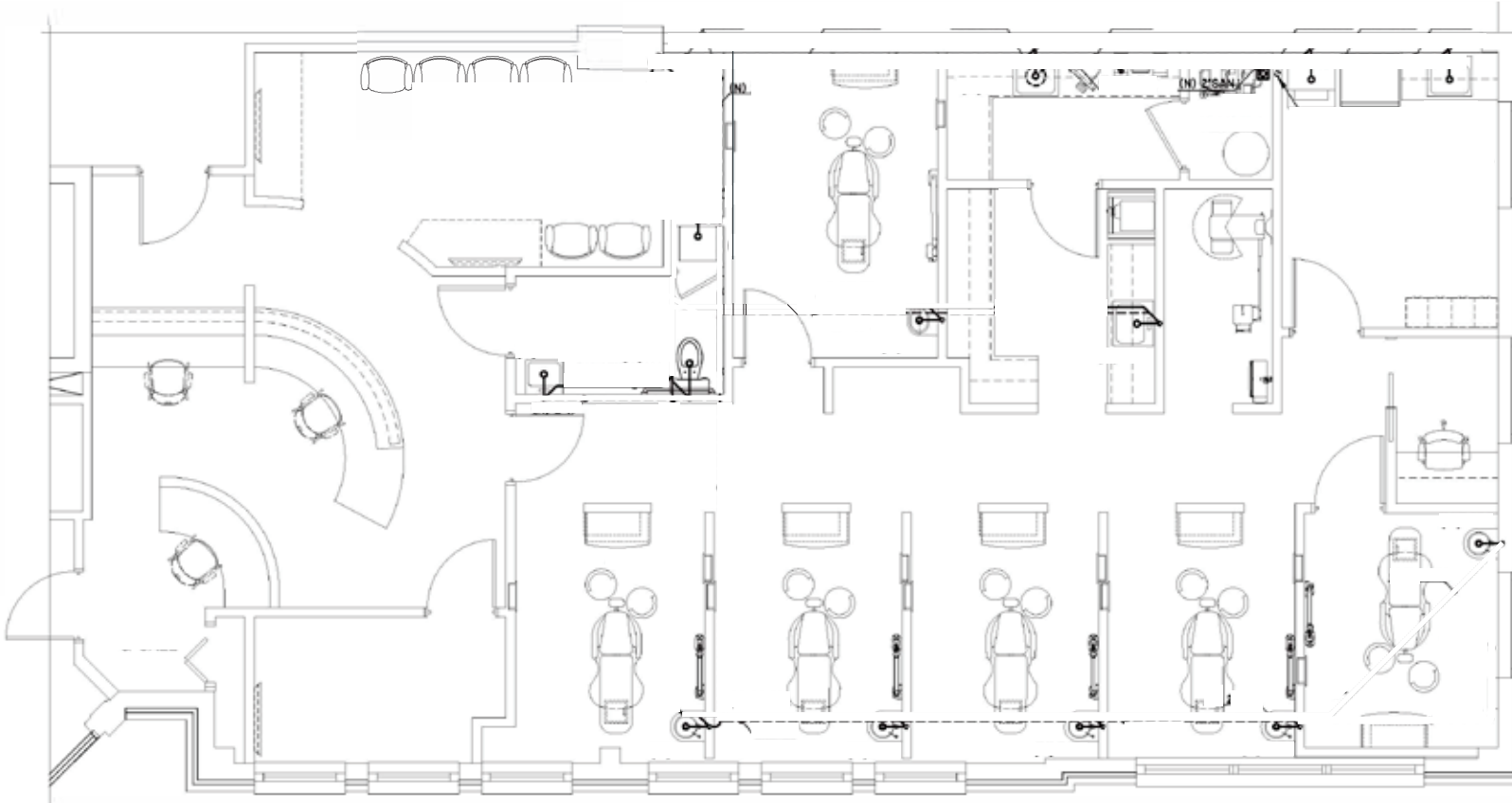
Robert Pugh
rpugh@klnb.com
301.222.0211

klnb

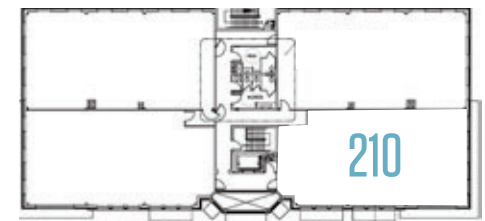
FLOOR PLAN

19873 CENTURY BOULEVARD

GERMANTOWN, MD 20874



Suite 210 | 2,352 SF



Lucas Glaeser
lglaeser@klnb.com
301.265.5614

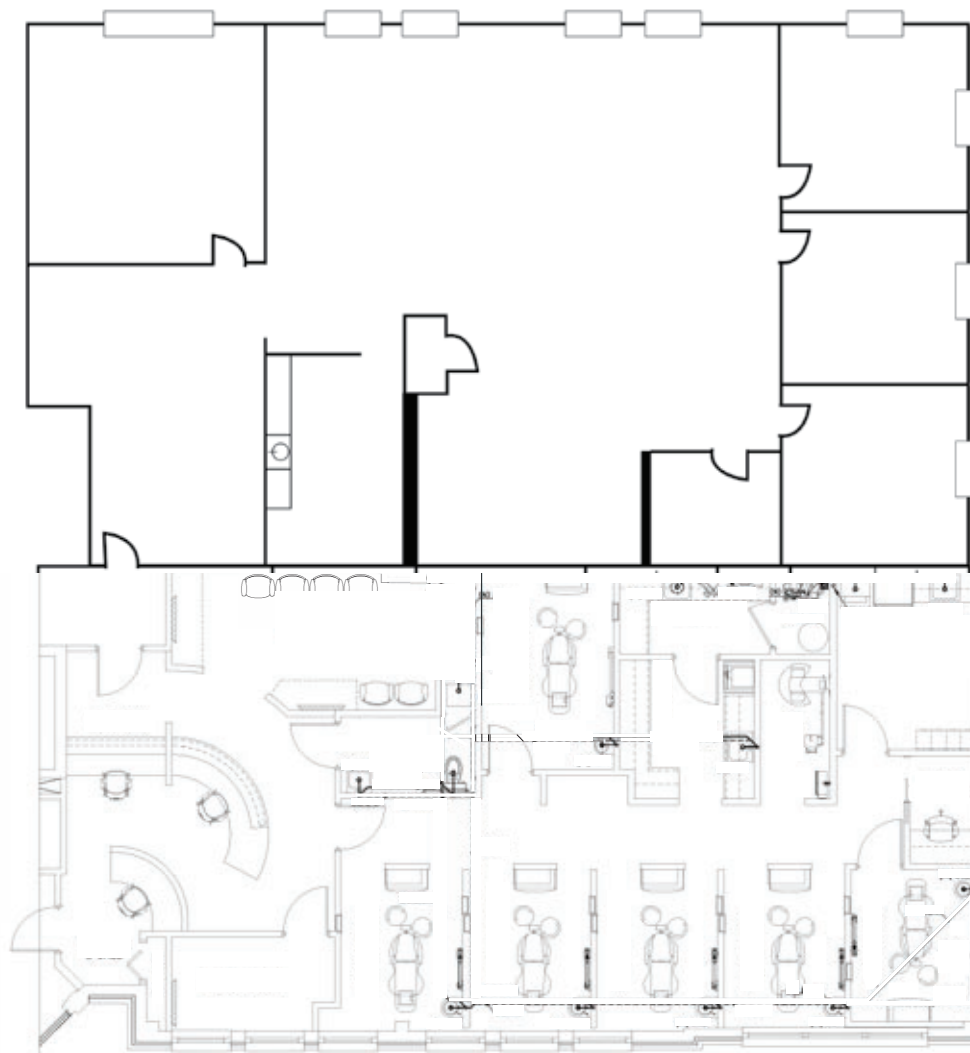
Robert Pugh
rpugh@klnb.com
301.222.0211

klnb

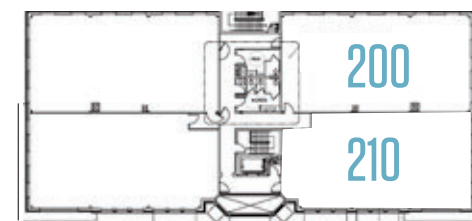
FLOOR PLAN

19873 CENTURY BOULEVARD

GERMANTOWN, MD 20874



Suite 200+210 | 4,930 SF



Lucas Glaeser
lglaeser@klnb.com
301.265.5614

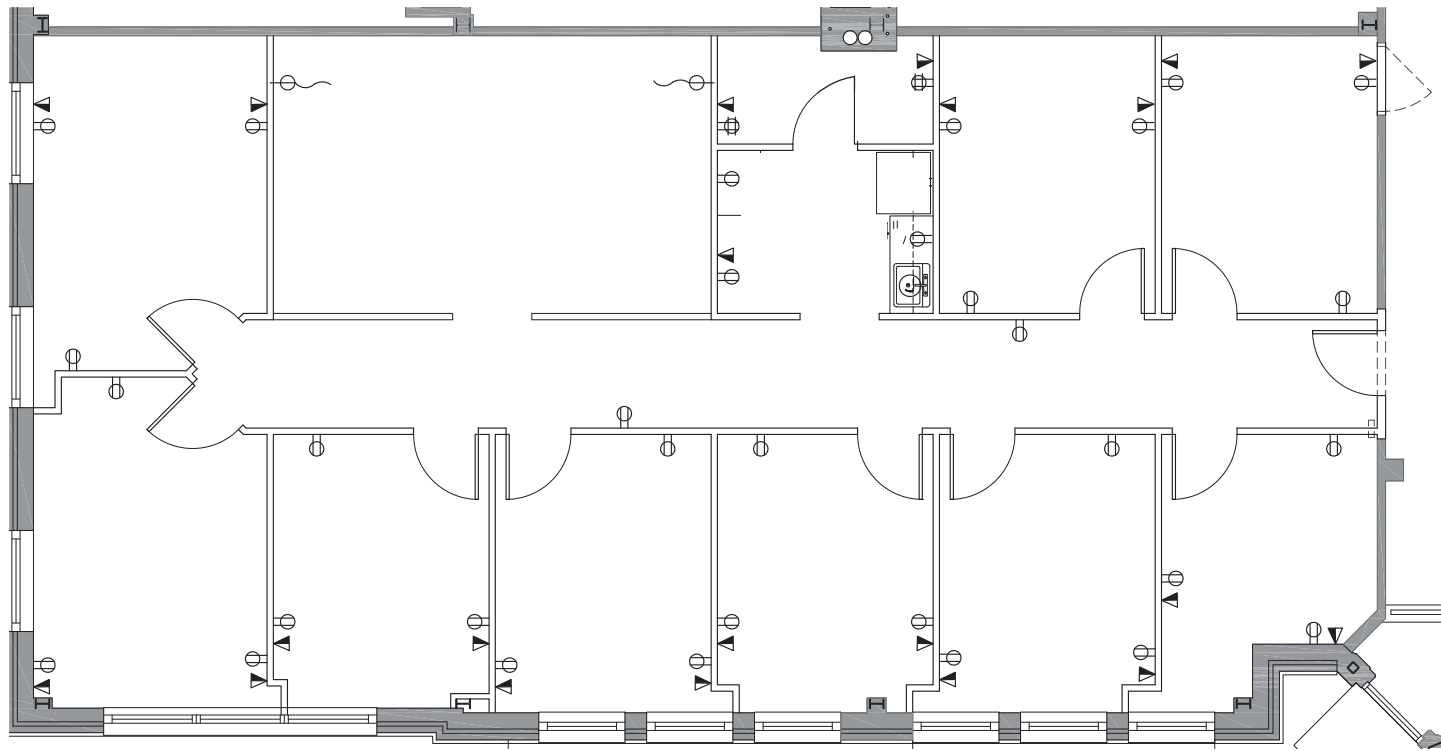
Robert Pugh
rpugh@klnb.com
301.222.0211

klnb

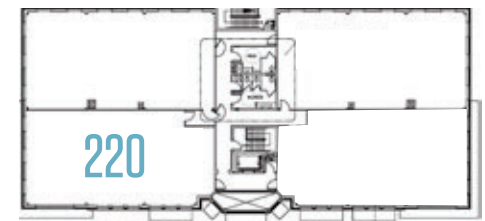
FLOOR PLAN

19873 CENTURY BOULEVARD

GERMANTOWN, MD 20874



Suite 220 | 2,386 RSF



Lucas Glaeser
lglaeser@klnb.com
301.265.5614

Robert Pugh
rpugh@klnb.com
301.222.0211

klnb



19873 CENTURY BOULEVARD

GERMANTOWN, MD 20874

FOR MORE INFORMATION, PLEASE CONTACT:

Lucas Glaeser

lglaeser@klnb.com

301.265.5614

Robert Pugh

rpugh@klnb.com

301.222.0211

12435 Park Potomac Ave, Suite 250 Rockville, MD 20854

.....

klnb.com



facebook.com/KLNB



@KLNBLLC



linkedin.com/company/klnb



instagram.com/klnblc

CLICK TO VIEW PROPERTY WEBSITE

While we have no reason to doubt the accuracy of any of the information supplied, we cannot, and do not, guarantee its accuracy. All information should be independently verified prior to a purchase or lease of the property. We are not responsible for errors, omissions, misuse, or misinterpretation of information contained herein and make no warranty of any kind, express or implied, with respect to the property or any other matters.