

# Proximity to Key Services



# CUBEWORK

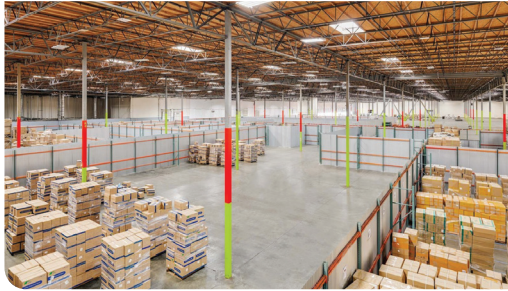
# Jacksonville Facility Map



# Cubework Locations

Operating nationwide, spanning across multiple states:

- |               |                |                     |
|---------------|----------------|---------------------|
| Texas         | New Jersey     | Los Angeles County  |
| Washington    | New York       | Orange County       |
| Virginia      | Pennsylvania   | Inland Empire       |
| Oklahoma      | South Carolina | Northern California |
| Florida       | Tennessee      | Arizona             |
| Georgia       | Utah           | Colorado            |
| Illinois      | Missouri       |                     |
| Indiana       | Nevada         | Global              |
| Massachusetts | Oregon         | Asia - Pacific      |



📍 2619 Ignition Dr - Bldg B, Jacksonville, FL 32218

☎ 800-338-6369

## Building Highlights

Cubework is the nation's premier short-or-long term warehouse provider, we specialize in offering expensive commercial storage, office solutions, and commercial parking without the need for long-term leases. Expand and downsize and never pay for more than what you need.

24/7 Building Access

On-site Staff

Turnkey Spaces

Conference Rooms

Daily Janitor Service

High-speed Internet

CCTV, Surveillance System

Ample Loading Docks

Gourmet Coffee & Water

Forklift Rentals and Labor

## Property Features

RBA	174,288 Square Feet
Site	116.70 Acres
Clear Height	36'
Loading Docks	17ext
HVAC	Yes
Fire Protection	Yes
Access	24/7, Turnkey
Warehouse	300 - 171,988 SF Divisible
Private Office	150 - 2,300 SF Divisible

