

MEDICAL OFFICE SPACE FOR LEASE



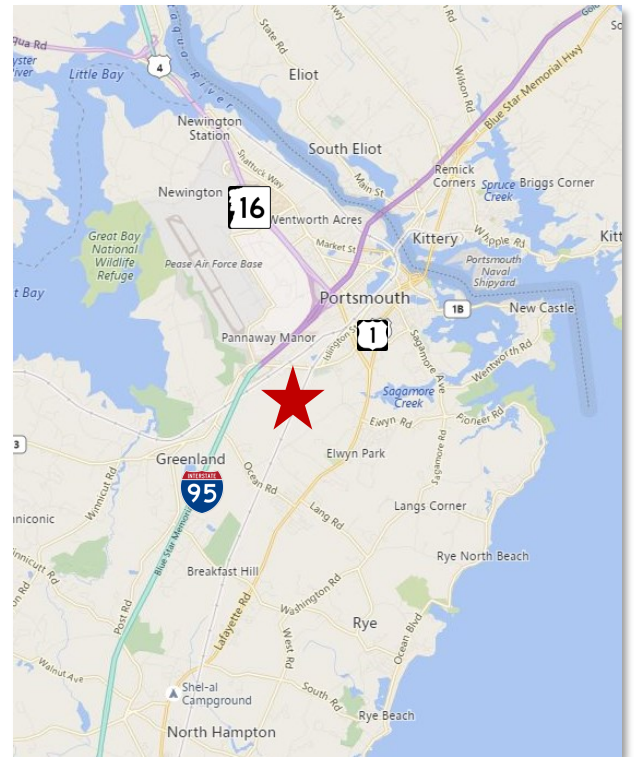
100 Griffin Road Portsmouth, NH

Medical office building located off Exit 3 of I95 and close proximity to Portsmouth Hospital. 2,155, 2395 & 4478 +/- SF options available. There is ample on-site non-designated parking. Other tenants include Allergy Associates, Atlantic Plastic Surgery and Port City Chiropractic.

LEASE RATE: \$20 PSF NNN
NETS: \$6.50

Brian O'Brien, RPA

+1 603 657 1941 • bobrien@nainorwoodgroup.com



NANorwood Group

28 Deer Street Suite 301
Portsmouth NH 03801
+1 603 431 3001
nainorwoodgroup.com

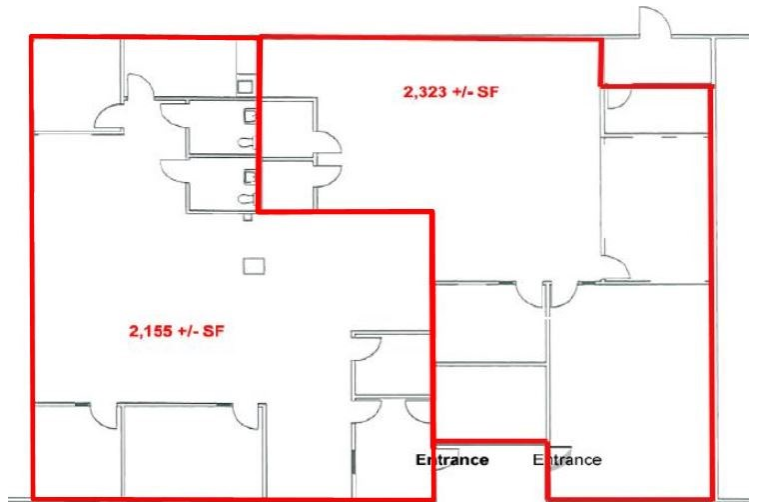
The information contained herein has been given to us by the owner of the property or other sources we deem reliable, we have no reason to doubt its accuracy, but we do not guarantee it. All information should be verified prior to purchase or lease.

MEDICAL OFFICE SPACE FOR LEASE



Property Features

- Space Available: 2,155, 2395, 4478± SF
- Located just off I 95 and close to Portsmouth Hospital
- Zoning: Professional Office
- HVAC: Gas, forced hot air
- Public Water and Sewer
- Ample non-designated onsite



LEASE RATE: \$20 PSF NNN
NETS: \$6.50

[CLICK HERE FOR MOR INFORMATION](#)