

# Unique Office Space For Lease

100 WEBSTER STREET  
OAKLAND, CA



## Area

**Suite 200:** ±2,374 SF

**Suite 300:** ±6,966 RSF (Consisting of ±5,555 RSF and a ±1,411 RSF Private Deck)

## Asking Rate & Availability

**Suite 200:** ±2,374 RSF - \$1.95 per RSF/ Month Industrial Gross

**Suite 300:** ±6,966 RSF (Consisting of ±5,555 RSF and a ±1,411 RSF Private Deck) \$1.95 per RSF/ Month Industrial Gross

## Property Highlights

- High End Finishes
- Great Natural Light
- Excellent Views
- Creative Office Space with Exposed HVAC Ducts
- Gym, Showers and Large Outdoor Patio
- Paid Parking in Secured Gated Lot
- Secure Lobby with Keyless Entry System
- Short Walk to Restaurants and Shops
- Secure On-Site Bike Parking
- Accessible Transportation via Ferry, Amtrak, BART and Transit Bus Lines

*For information, please contact:*

### Joel Maimon

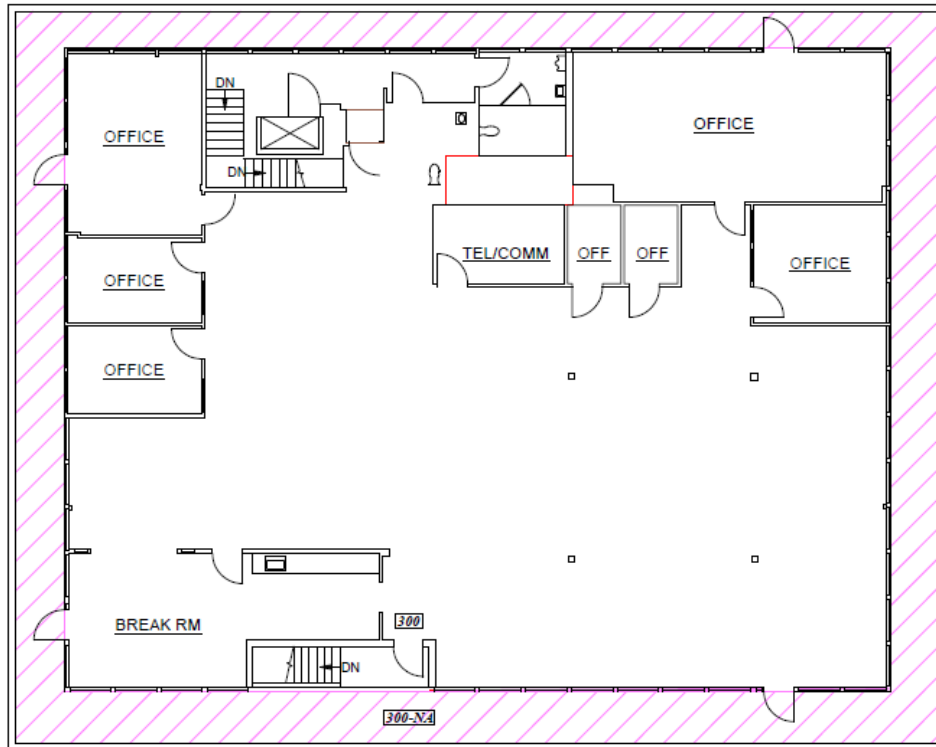
Senior Managing Director  
t 510-923-6249  
joel.maimon@nrmk.com  
CA RE Lic #01468737

[nrmk.com](http://nrmk.com)

**NEWMARK**

The distributor of this communication is performing acts for which a real estate license is required. The information contained herein has been obtained from sources deemed reliable but has not been verified and no guarantee, warranty or representation, either express or implied, is made with respect to such information. Terms of sale or lease and availability are subject to change or withdrawal without notice.

# Suite 300



## Highlights

- ±6,966 RSF (Consisting of ±5,555 RSF and a ±1,411 RSF Private Deck)
- Available Immediately
- \$1.95 per RSF/ Month Industrial Gross

## Suite Specifications

- Outstanding Space
- Private Deck
- Four (4) Sides of Floor to Ceiling Glass Windows
- Excellent Natural Lights
- Four (4) offices, One (1) Conference Room, Two (2) Break Out Rooms, Server Room and Open Break Room
- Large Open Area for Cubicles

For information, please contact:

### Joel Maimon

Senior Managing Director  
t 510-923-6249  
joel.maimon@nrmk.com  
CA RE Lic #01468737

[nrmk.com](http://nrmk.com)



# Suite 300



*For information, please contact:*

**Joel Maimon**

Senior Managing Director

t 510-923-6249

[joel.maimon@nrmk.com](mailto:joel.maimon@nrmk.com)

CA RE Lic #01468737

[nrmk.com](http://nrmk.com)

**NEWMARK**

# Suite 200

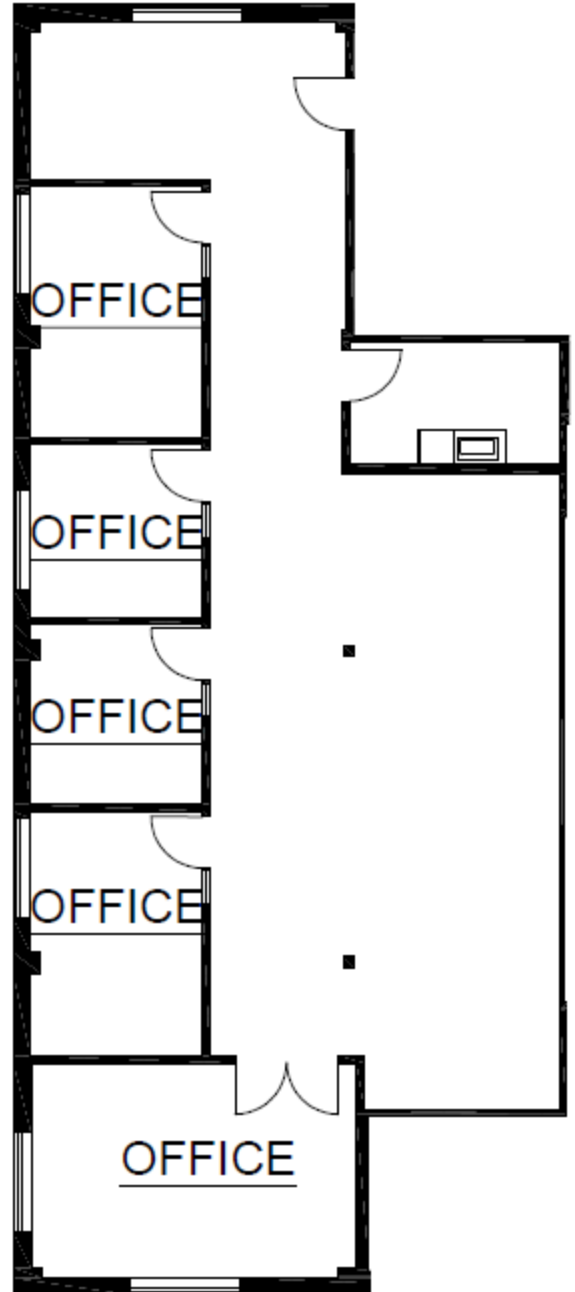
---

## Highlights

- ±2,374 RSF
- Available Immediately
- Asking Rate: \$1.95 per RSF/ Month, Industrial Gross

## Suite Specifications

- Four (4) offices, One (1) Conference Room and One (1) Break Room
- Large Open Area for Cubicles
- Open Kitchen
- High-End Build-Out
- Excellent Natural Light
- Exposed HVAC Ducts



---

*For information, please contact:*

**Joel Maimon**

Senior Managing Director

t 510-923-6249

joel.maimon@nrmk.com

CA RE Lic #01468737

[nrmk.com](http://nrmk.com)