

OFFICE/MEDICAL/EDUCATION/DAYCARE/COMMUNITY FACILITY/NONPROFIT

# 55 WESTCHESTER SQUARE

BRONX | NEW YORK

UP TO  
**19,656 SF**  
Available For Lease



**35 PARKING SPACES**  
**STEPS AWAY FROM 6 TRAIN**

BROKERS PROTECTED

RW



# SPACE DETAILS

**SIZE**

Lower Level    10,040 SF  
Second Floor   9,616 SF  
Total            19,656 SF

**FRONTAGE**

145 FT on East Tremont Avenue  
131 FT on Ponton Avenue

**STATUS**

Jewish Board of Family & Children’s Services

**POSSESSION**

Arranged

**RENT**

Upon Request

**TRANSPORTATION (Transit/Subway)**

Westchester Sq-E Tremont Av (6 Train)  
BX 31 - Woodlawn

**COMMENTS**

Corner property located in one of the busiest hubs in Bronx, NY. Private lobby entrance with a private stairwell and designated elevator. An amazing opportunity for office, medical, education, daycare, adult care, community facility, non-profit, and many more.





ADDITIONAL PHOTOS





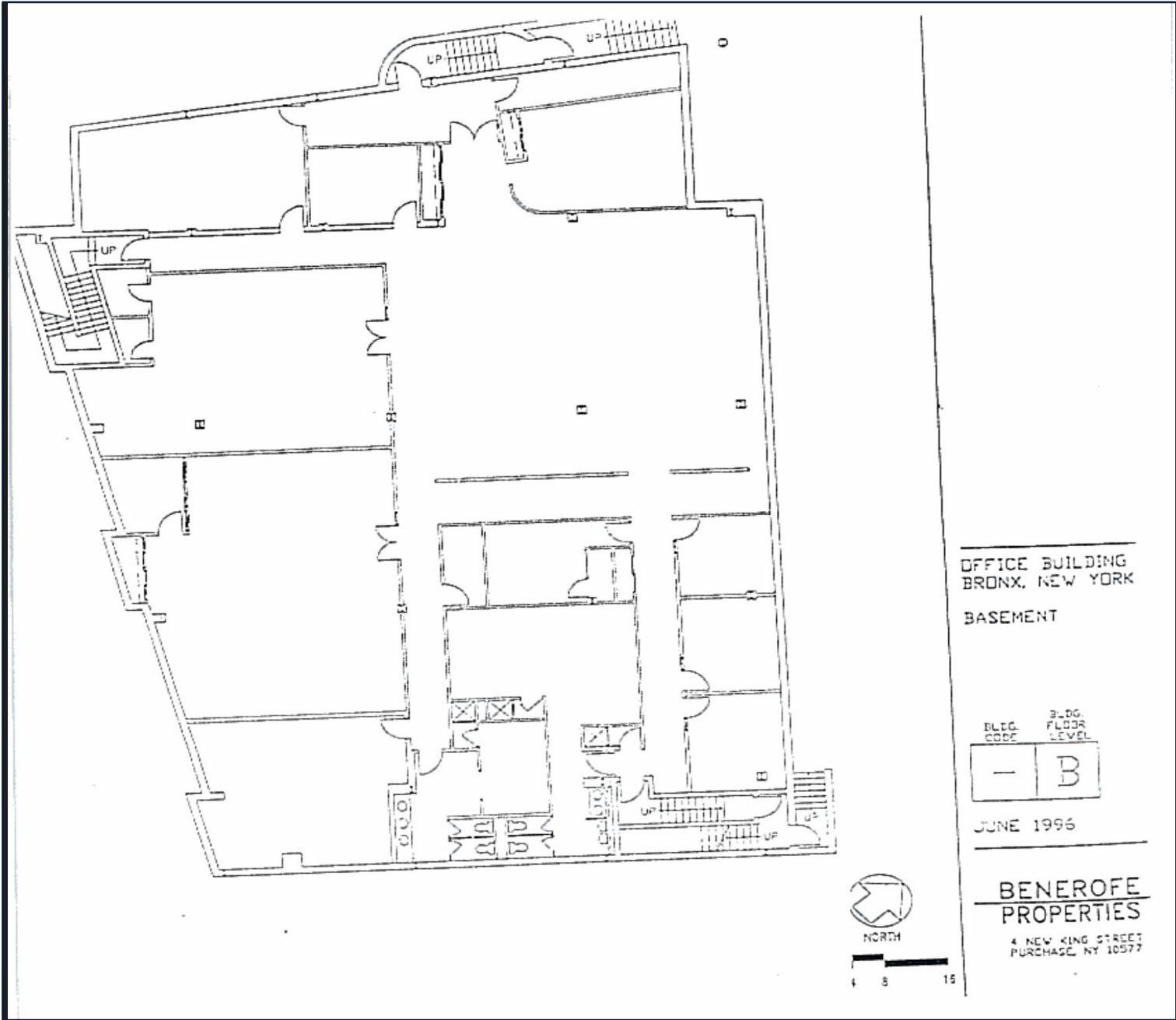
# STEPS AWAY FROM 6 TRAIN



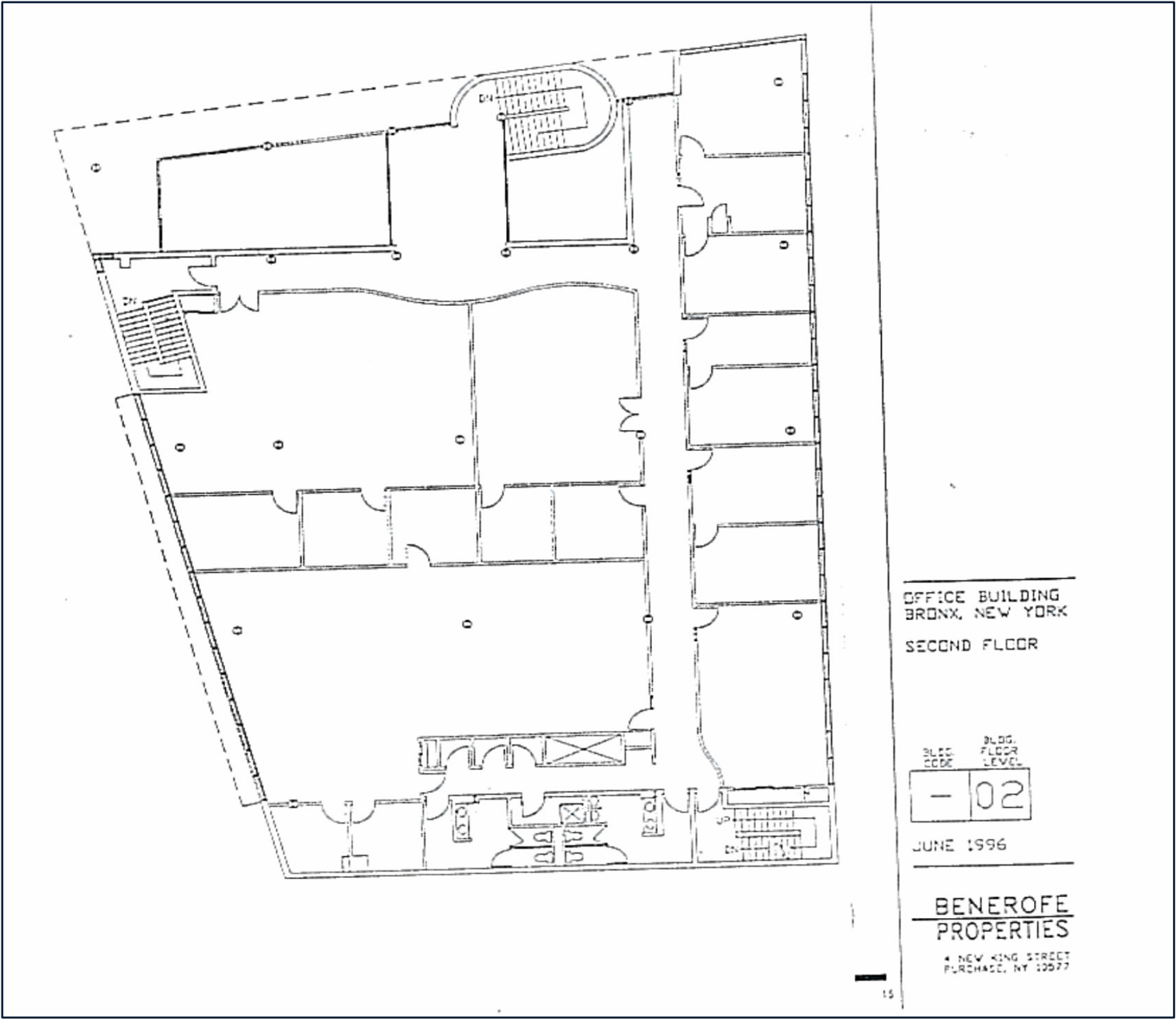


FLOOR PLANS

LOWER LEVEL



SECOND FLOOR





OFFICE/MEDICAL/EDUCATION/DAYCARE/COMMUNITY FACILITY/NONPROFIT

# 55 WESTCHESTER SQUARE

BRONX | NEW YORK

## CONTACT US

347 926 3391

NICHOLAS FIORILLO

[leasing@rwrealestategroup.com](mailto:leasing@rwrealestategroup.com)

# RW

**RW REAL ESTATE GROUP, LLC**

97-77 Queens Boulevard, Suite 620

Rego Park, New York 11374

[rwrealestategroup.com](http://rwrealestategroup.com)