



**OFFICE BUILDING FOR LEASE**

# CORPORATE LANDING MEDICAL CENTER

1232 PERIMETER PARKWAY, VIRGINIA BEACH, VA 23454



# CORPORATE LANDING MEDICAL CENTER

1232 PERIMETER PARKWAY, VIRGINIA BEACH, VA 23454

## PROPERTY OVERVIEW



## OFFERING SUMMARY

**Available SF:** 1,760 - 2,984 SF

**Lease Rate:** \$24.00 SF/yr (Full Service)

**Building Size:** 20,000 SF

## AVAILABLE SPACES

**SF**

Suite 100 (Available 11/1/24) 1,760 SF

Suite 200 / 201 (Available 8/1/25) 2,410 SF

Suite 203 / 205 (Available 1/1/25) 2,984 SF

## PROPERTY OVERVIEW

20,000-square-foot Class A brick and glass, medical office building. Current tenants include: Tidewater Physicians Multispecialty Group Internal & Family Medicine, Chesapeake Bay ENT, Oceana Sports Medicine & Orthopaedic Center, Cho Foot & Ankle Specialists, The Therapy Network, Tidewater Medical Transportation, Dynamic Health Resources, Department of Veterans Services.

## PROPERTY HIGHLIGHTS

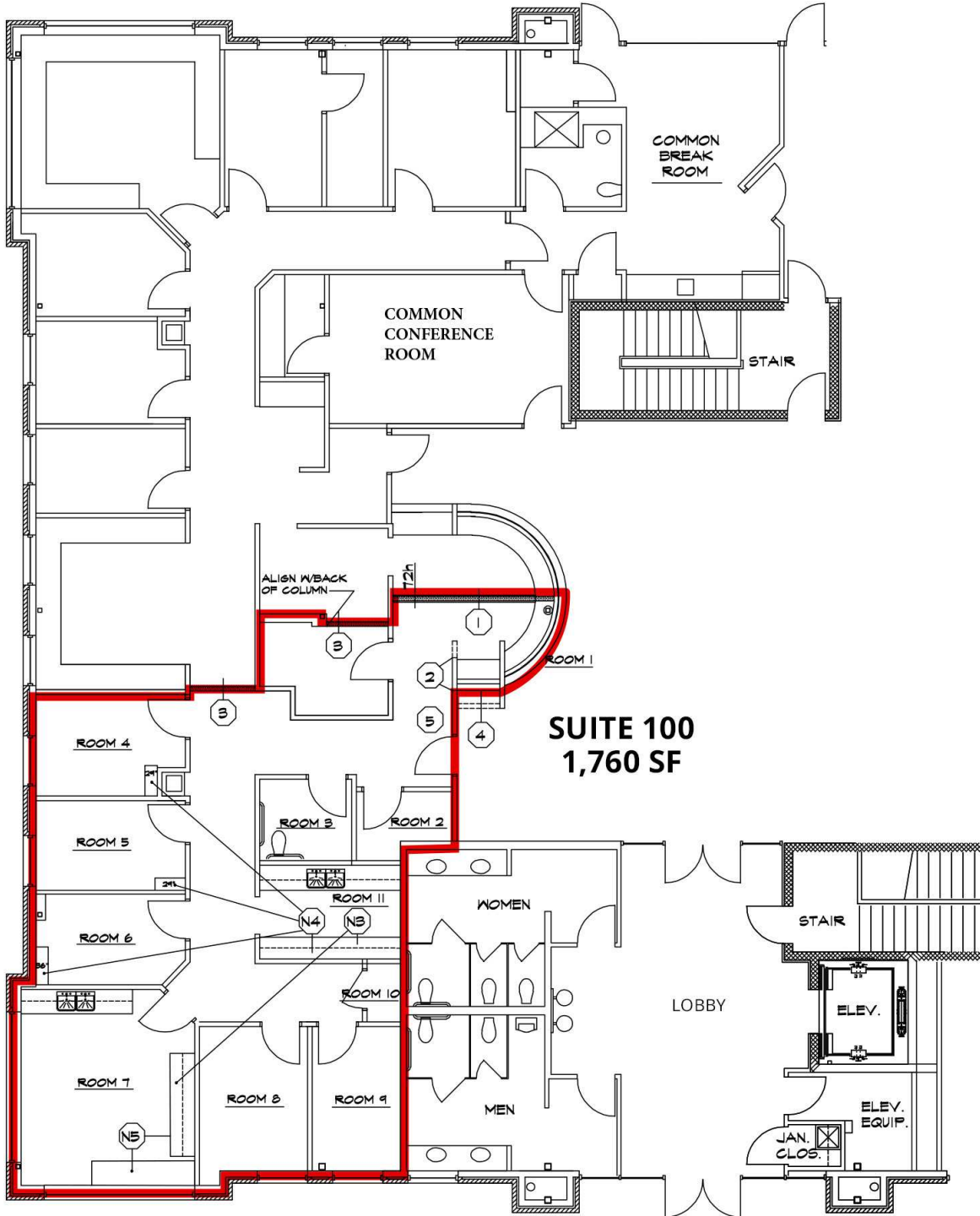
- Located in certified Opportunity Zone
- Building Conference Room
- Common Employee Break Room
- X-Ray Facilities on premises
- No clinical restrictions on procedures or services
- Primary Care Practice onsite



# CORPORATE LANDING MEDICAL CENTER

1232 PERIMETER PARKWAY, VIRGINIA BEACH, VA 23454

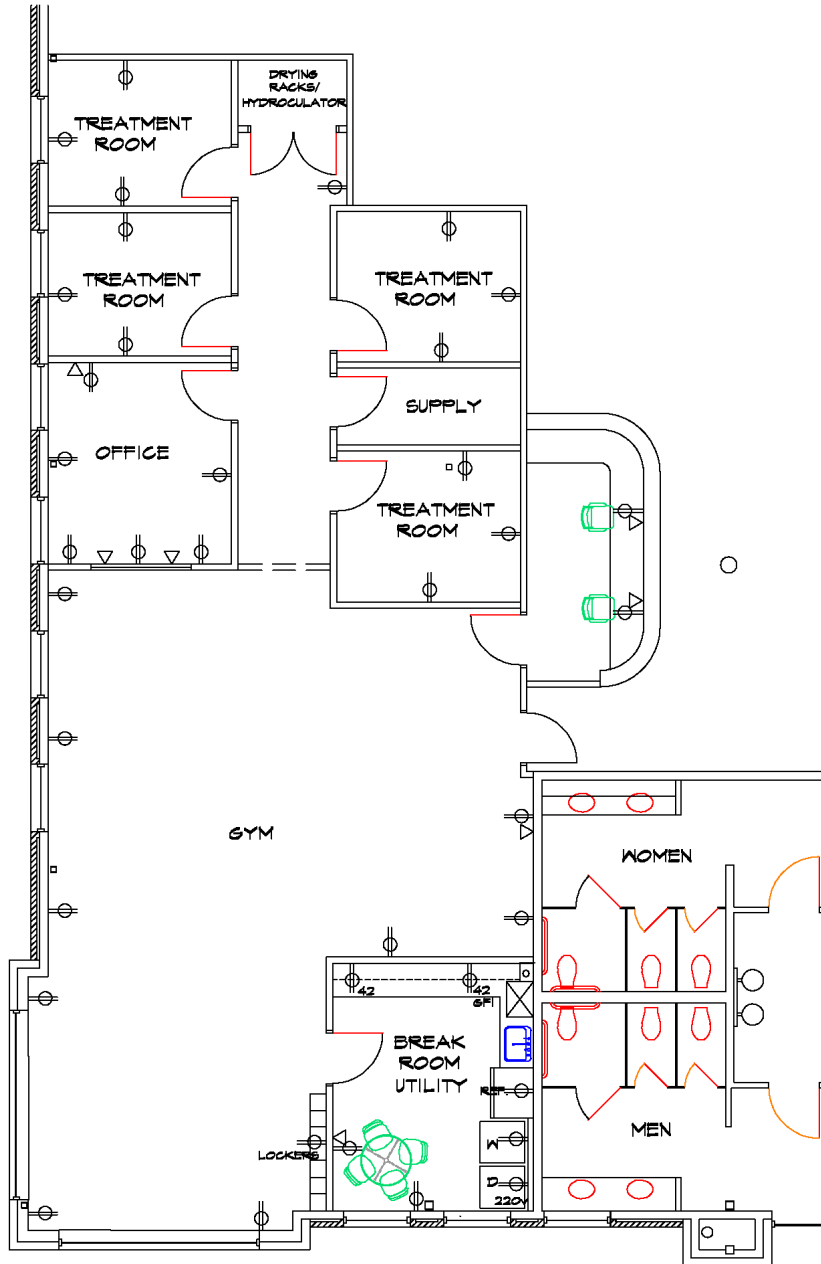
SUITE 100



# CORPORATE LANDING MEDICAL CENTER

1232 PERIMETER PARKWAY, VIRGINIA BEACH, VA 23454

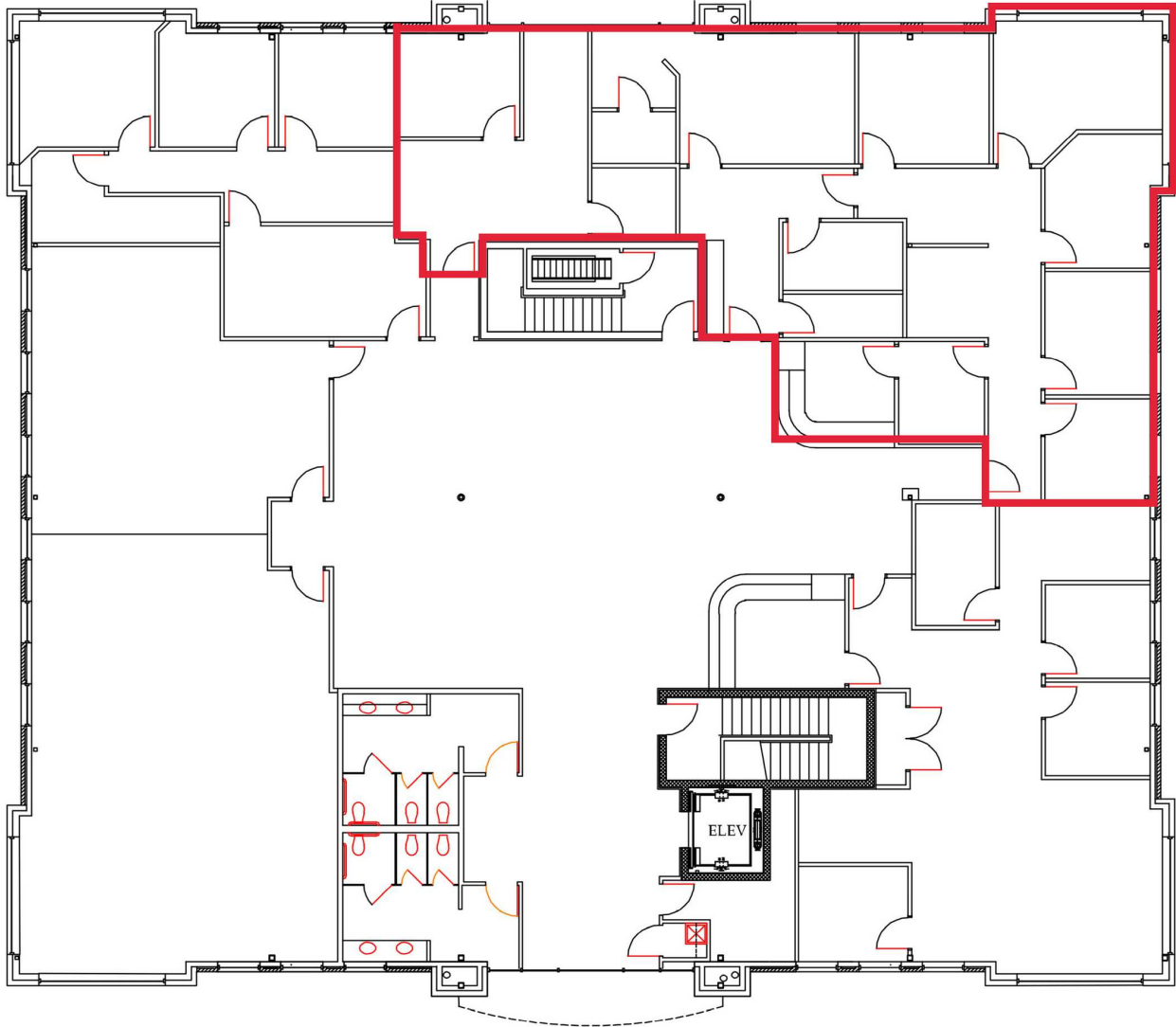
SUITE 200 / 201

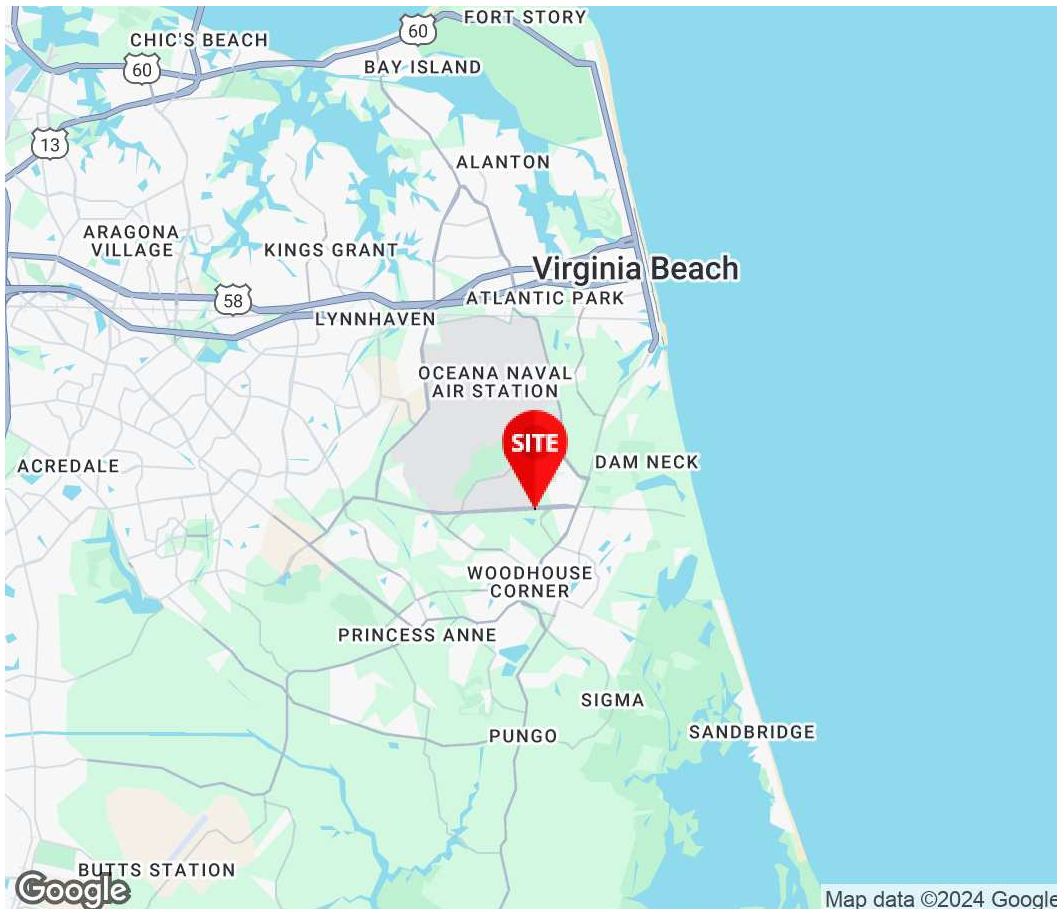
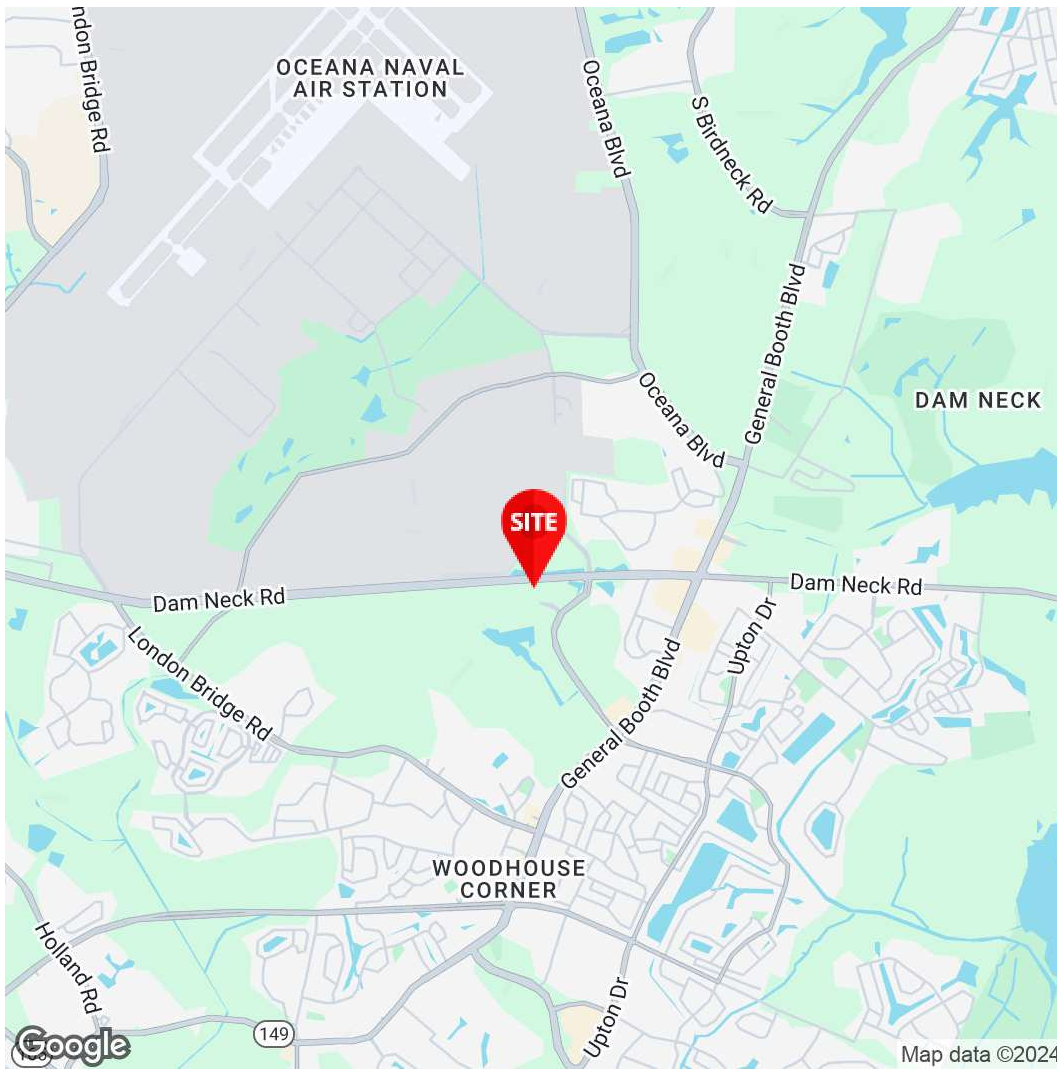


# CORPORATE LANDING MEDICAL CENTER

1232 PERIMETER PARKWAY, VIRGINIA BEACH, VA 23454

SUITE 203 / 205





**Krista Costa**  
 Executive Vice President  
 757.333.4356  
 Kcosta@Divaris.Com

The information contained herein should be considered confidential and remains the sole property of Divaris Real Estate, Inc. at all times. Although every effort has been made to ensure accuracy, no liability will be accepted for any errors or omissions. Disclosure of any information contained herein is prohibited except with the express written permission of Divaris Real Estate, Inc.