



# For sublease

Office space available  
in Iowa River Landing  
in Coralville, Iowa

## 7,201 RSF

200 E 9th Street | Suite 305  
Coralville, Iowa 52241

### Property overview

Availability: 7,201 RSF

Lease rate: \$19.50 PSF NNN

- 5 private offices
- 2 large conference rooms
- Open floor plan
- Parking: 10 stalls
- Located just off of Interstate 80, Iowa River Landing is a vibrant, 180 acre mixed-use neighborhood that offers a unique blend of entertainment, commerce, and community living

**Michael Minard, CCIM**  
Senior Vice President  
[michael.minard@jll.com](mailto:michael.minard@jll.com)  
+1 563 508 4649

**Thomas Edwards**  
Analyst  
[thomas.edwards@jll.com](mailto:thomas.edwards@jll.com)  
+1 515 802 4684

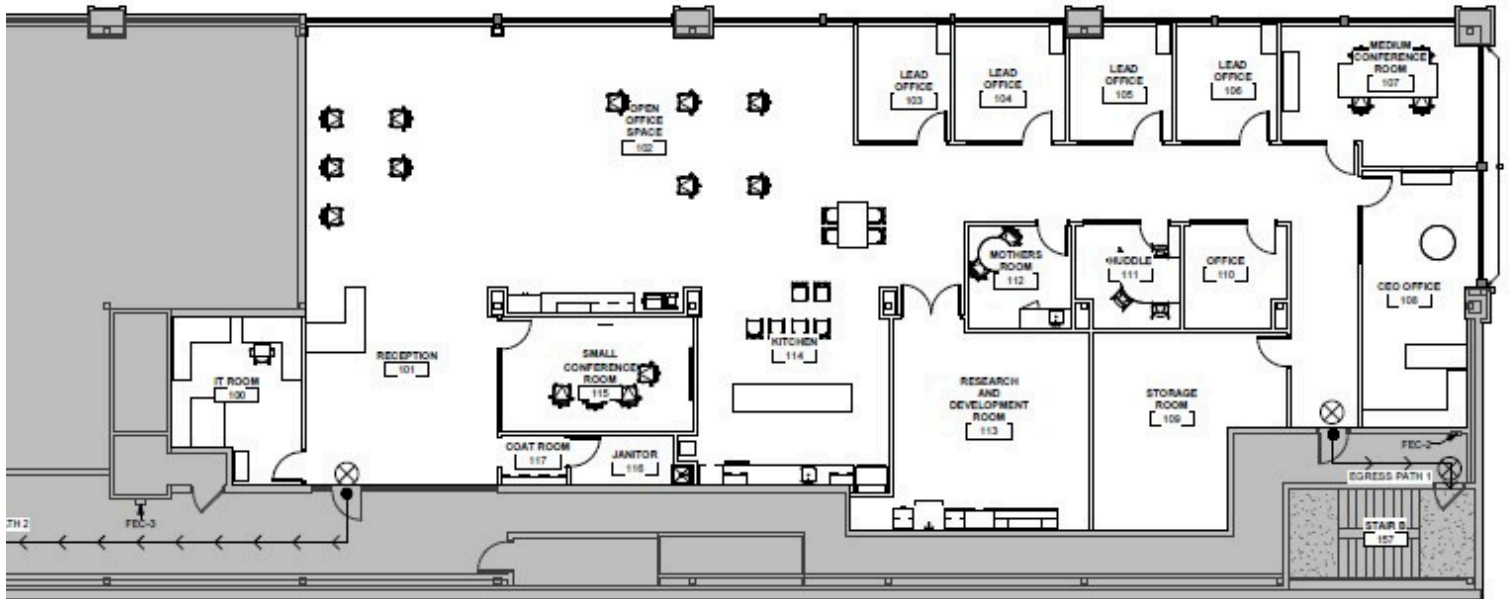
Contact brokers for  
additional information

[jll.com/des-moines](http://jll.com/des-moines)

Jones Lang LaSalle Americas, Inc.



## Floor plan



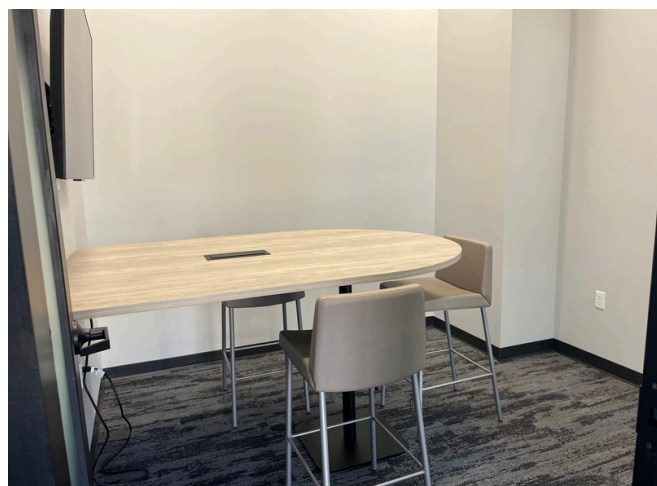
## Demographics

	1 Mile	3 Miles	5 Miles
Population	8,223	72,554	115,576
Households	4,285	29,732	47,081
Avg HH Income	\$82,124	\$88,430	\$91,781





## Images





# 200 E 9th Street

Coralville, Iowa 52241



**Michael Minard, CCIM**  
michael.minard@jll.com  
+1 563 508 4649

**Thomas Edwards**  
thomas.edwards@jll.com  
+1 515 802 4684

Contact brokers for  
additional information

[jll.com/des-moines](http://jll.com/des-moines)  
Jones Lang LaSalle Americas, Inc.

