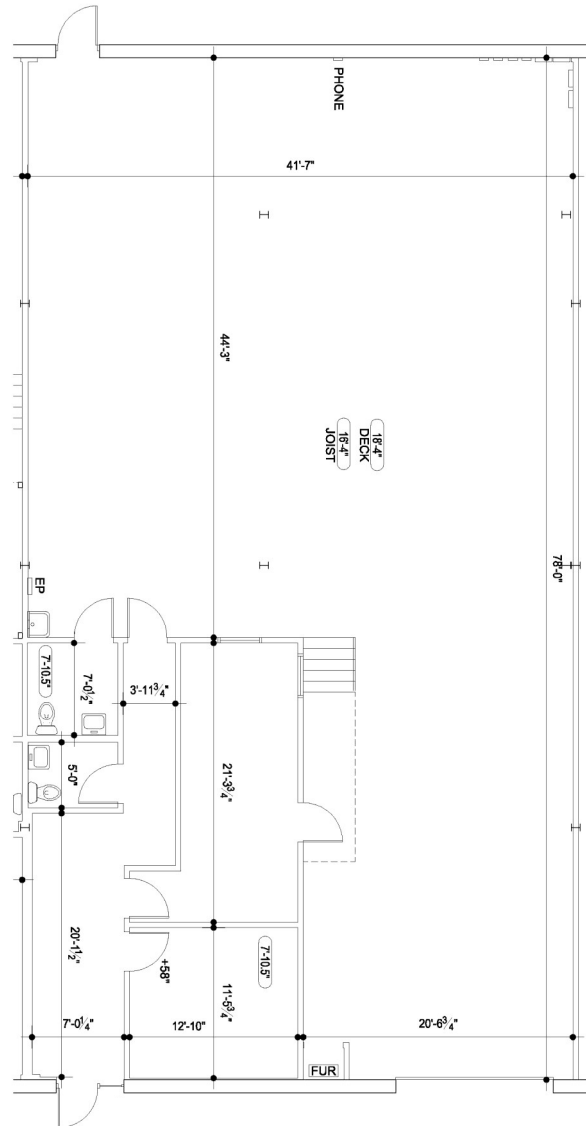


Leased & Managed By:



## GENERAL COURT COMMERCE CENTER

9183 General Court, Plymouth, MI 48170



### UNIT HIGHLIGHTS

Total Area: Approx. 3,350 SF  
Office Area: Approx. 738 SF  
Overhead Door: One 12' Grade Level

### LOCATION OVERVIEW



[www.ari-el.com](http://www.ari-el.com)



29355 Northwestern Hwy., Suite 301, Southfield, MI 48034



(248) 557-3800