

2nd-Gen Restaurant For Lease

1155 N Highland Ave, Los Angeles, CA 90038



Dimitri Fremont
Cell: 323 605 9468
dimitrifremont@gmail.com
Lic. 02001174

Fremont Metro Commercial, Inc.
Office: 424 330 0200
506 Santa Monica Blvd. #223
Santa Monica, CA 90401
lic. 02164509

- 1155 N Highland Ave, Los Angeles, CA 90038
- Fully built-out restaurant; No key money.
- CUP for Full Liquor (8AM - 12 Midnight daily) with liquor license available for purchase.
- Permitted outdoor patio

Terms:

- Asking Rent: \$4.75 PSF/mo + NNNs \$0.50 PSF/mo.
- Size: approx. 3,200 sq. ft.
- Lease length: 5 years + 5 year option to renew.

2nd-Gen Restaurant For Lease

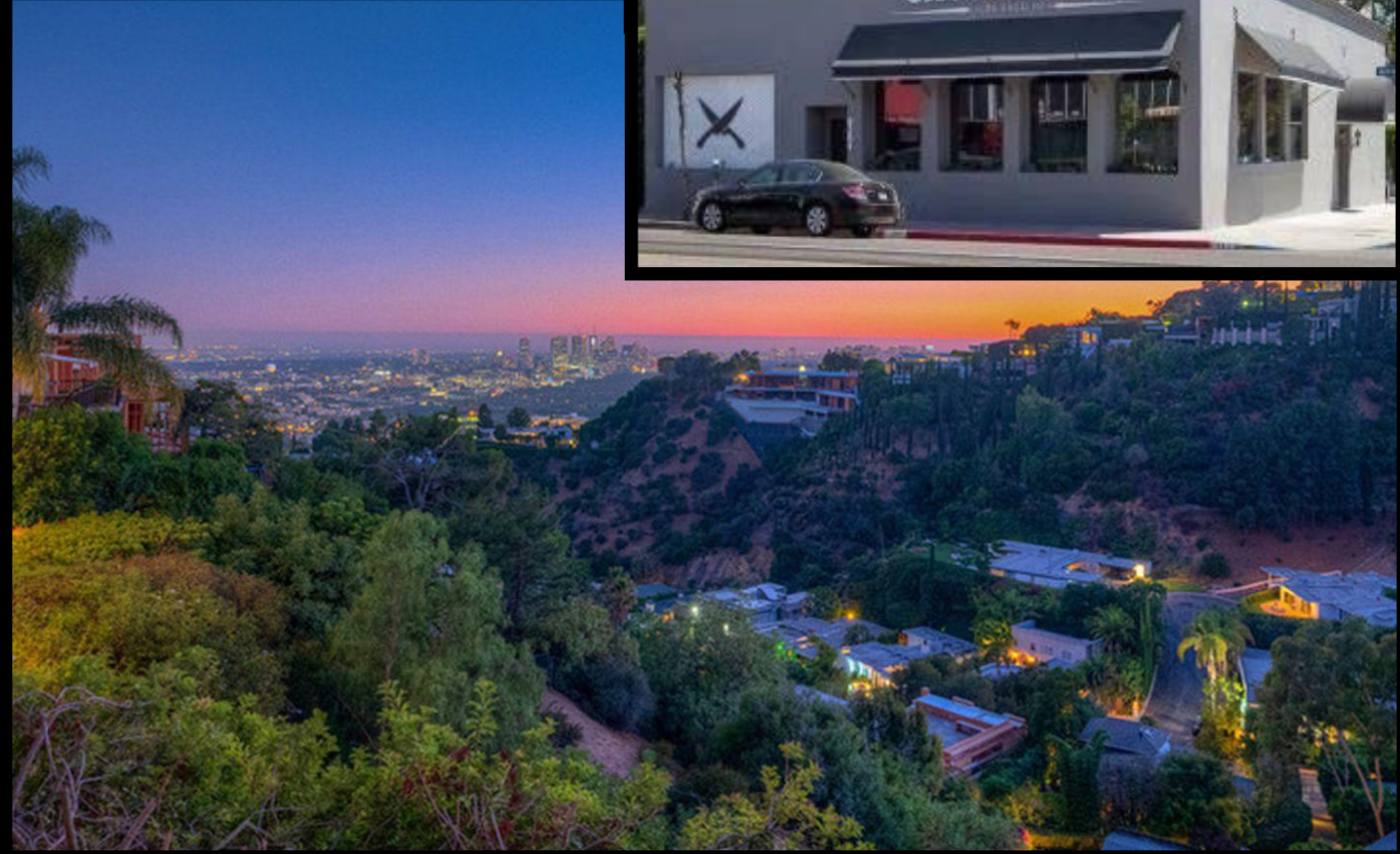
1155 N Highland Ave, Los Angeles, CA 90038





2nd-Gen Restaurant For Lease

1155 N Highland Ave, Los Angeles, CA 90038



2nd-Gen Restaurant For Lease

1155 N Highland Ave, Los Angeles, CA 90038

Notable Nearby Establishments

Include:

Osteria Mozza

Chi Spacca

Crossroads Kitchen

Providence

Kali

Carlitos Gardel

Bludso's BBQ

Mizlala Sycamore

Sightglass Coffee

Tartine



Dimitri Fremont
Cell: 323 605 9468
dimitrifremont@gmail.com
Lic. 02001174

Fremont Metro Commercial, Inc.
Office: 424 330 0200
506 Santa Monica Blvd. #223
Santa Monica, CA 90401
lic. 02164509

