



PRIME RETAIL, MEDICAL, AND OFFICE SPACE FOR LEASE

43801 Mission Blvd | Fremont, CA 94539

Yuan Chang | Vice President

DRE#: 01352021 | (408) 417-0099

YChang@AiCREPartners.com

Ronald Lin | Director

DRE#: 01959413 | (909) 859-9780

RLin@AiCREPartners.com

Michael H. Young | Advisor

DRE#: 02003601 | (415) 866-6470

MYoung@AiCREPartners.com

www.AiCREPartners.com

ÀCRE
PARTNERS


THE ASIA GROUP
american strategic investment advisers

43801 Mission Blvd | Fremont, CA 94539

Disclaimer

The information contained in this Offering Memorandum is confidential and is provided for the sole purpose of allowing persons to evaluate whether there is interest in proceeding with further discussions with the owner regarding a possible transaction with respect to the Property. The information contained herein shall not be photocopied or disclosed to any other party and shall not be used for any other purpose.

Neither the owner, nor AiCRE, nor any of their officers, directors, employees or agents, assume any responsibility or make any representations or warranties, whether express or implied, by operation of law or otherwise, with respect to the Property or this Offering Memorandum or any information or statements (including financial statements and projections) contained herein or relating hereto, including the accuracy or completeness of such information or statements and the condition, quality or fitness of the Property. Such information and statements have in many circumstances been obtained from outside sources, have not been tested or verified and may be subject to errors or omissions. Projections, in particular, are based on various assumptions and subjective determinations as to which no guaranty or assurance can be given. Without limiting the foregoing, in the event this Offering Memorandum contains information relating any hazardous, toxic or dangerous materials in relation to the Property, such information shall in no way be construed as creating any warranties or representations, express or implied, by operation of law or otherwise, by any party, as to the existence or non-existence or nature of such materials in, under, on or around the Property. Potential investors are urged to perform their own examination and inspection of the Property and information relating to same, and shall rely solely on such examination and investigation and not on this Offering Memorandum or any information or materials contained herein or otherwise provided.

The only party authorized to represent the owner of the Property is AiCRE and the owner shall not be obligated to pay any fees or commissions to any other advisor, broker or representative. This Offering Memorandum is provided subject to prior sale or lease, change of price or terms and other changes to the materials, statements and information contained herein or relating to the Property, and is subject to withdrawal, all without notice or any liability. In no event shall the delivery or receipt of this Offering Memorandum be deemed to create any legal obligation to enter into any transaction with respect to the Property, and only a definitive agreement signed by all parties shall create a binding commitment to enter into a transaction.

Yuan Chang | Vice President

DRE#: 01352021 | (408) 417-0099
YChang@AiCREPartners.com

Ronald Lin | Director

DRE#: 01959413 | (909) 859-9780
RLin@AiCREPartners.com

Michael H. Young | Advisor

DRE#: 02003601 | (415) 866-6470
MYoung@AiCREPartners.com



THE ASIA GROUP
american strategic investment advisors

43801 Mission Blvd | Fremont, CA 94539

Content



04

Executive Summary

06

Floor Plans

08

Property Photos

09

Aerial Maps

11

Location Overview

12

Demographics

Executive Summary

Discover prime commercial real estate at Mohawk Plaza, located at 43801 Mission Blvd. in Fremont, CA. This exceptional property is ideally situated in the desirable Mission San Jose area, boasting an excellent location within a strong, high-income demographic. Enjoy outstanding freeway access and the convenience of being within walking distance to numerous shops and service amenities, making it an attractive hub for both clients and employees.



This versatile space is ready for immediate move-in, offering flexible options for retail, medical, or office use. The building provides building signage to maximize your business's visibility. Tenants will benefit from an elevator-served building and a large, inviting courtyard, enhancing the professional and welcoming atmosphere. With a generous parking ratio of $\pm 4.2/1,000$ and a total of 50 parking spaces, accessibility is never an issue. Mohawk Plaza is zoned for General Commercial (CG), accommodating a wide range of business needs.

The property offers various suite sizes, with ground floor suites ranging from ± 710 SF to $\pm 5,252$ SF and second-floor suites from $\pm 1,019$ SF to $\pm 6,357$ SF. This adaptability, combined with its strategic location and ample parking, ensures a high traffic count and excellent exposure for your business.

For showing requests and further information, please reach out to Michael Young or Yuan Chang at (650) 480-6028.



43801 Mission Blvd | Fremont, CA 94539

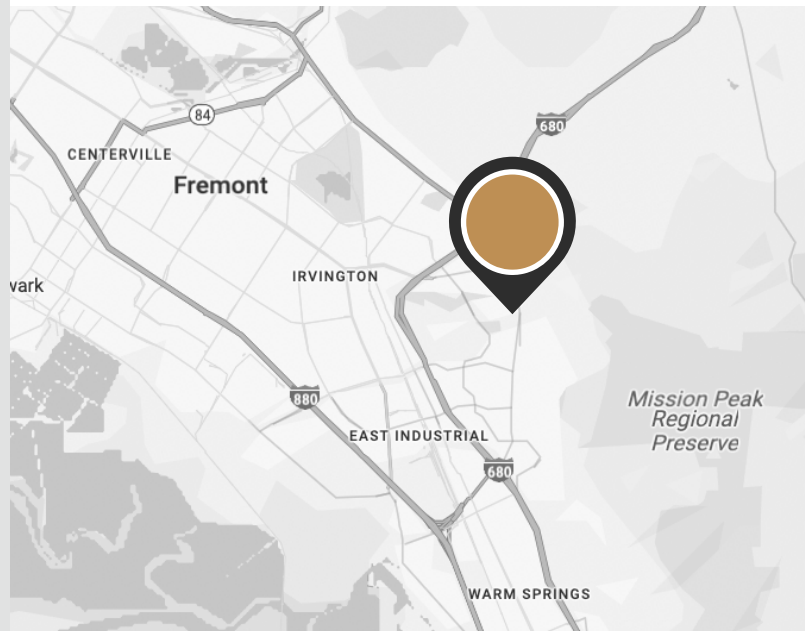
05

Executive Summary



Property Highlights

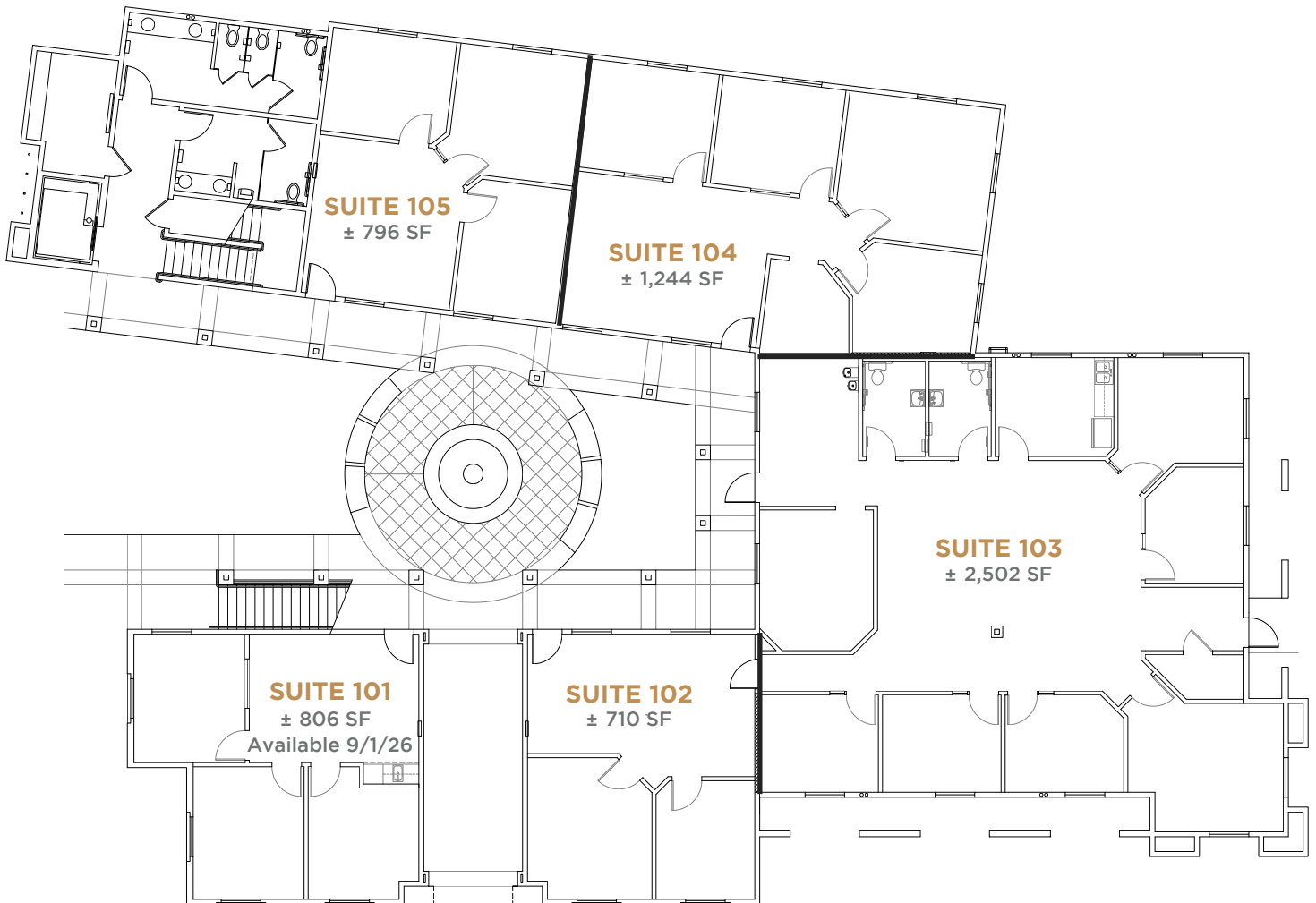
- ✔ Retail, Medical, Office use
- ✔ Ready for move-in
- ✔ Elevator Served
- ✔ Large Courtyard
- ✔ ±4.2/1,000 Parking Ratio
- ✔ 50 parking spaces
- ✔ Zoned for General Commercial (CG)
- ✔ Located in desirable, strong high-income demographic Mission San Jose area
- ✔ Outstanding Freeway Access
- ✔ Walking Distance to Shops and Service Amenities



Ground Floor Suites

AVAILABLE SUITES

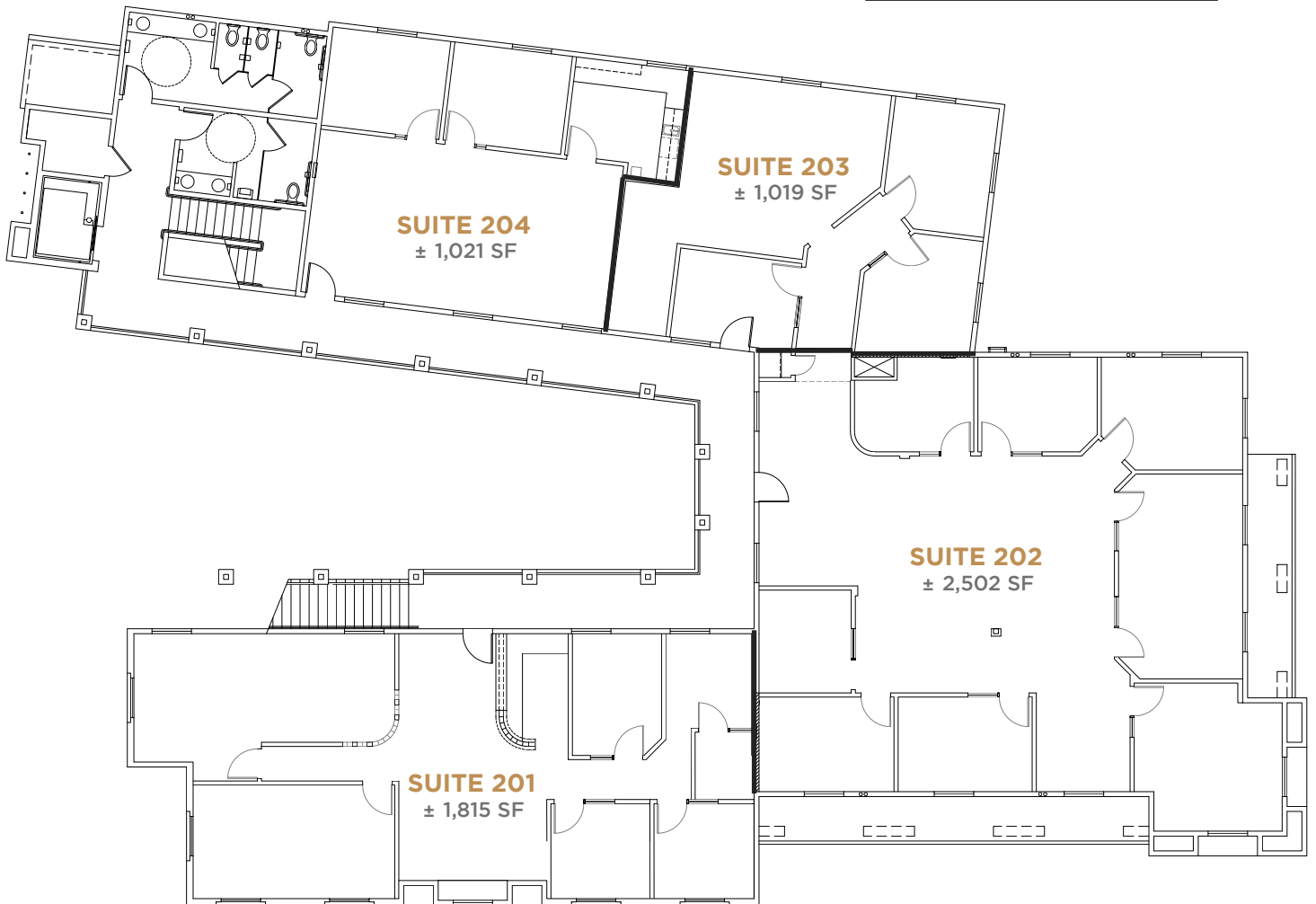
101	± 806 SF
102	± 710 SF
103	± 2,502 SF
104	± 1,244 SF
105	± 796 SF
TOTAL	± 5,252 SF



Second Floor Suites

AVAILABLE SUITES

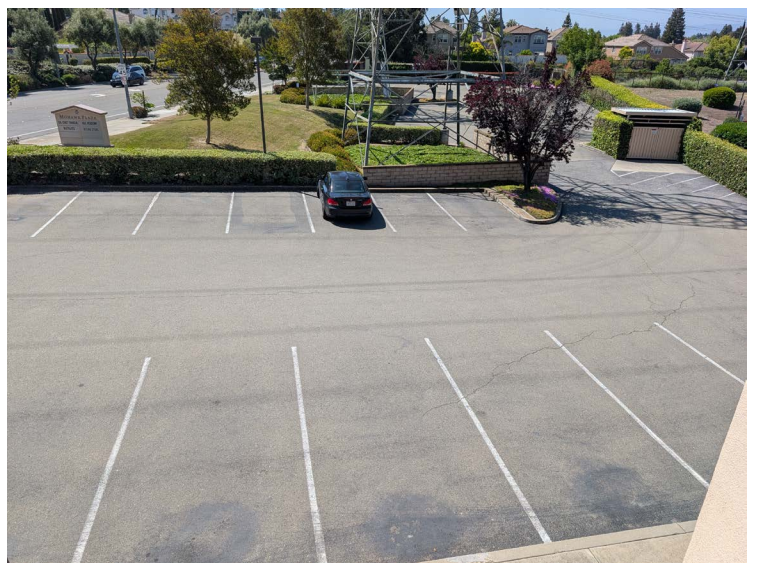
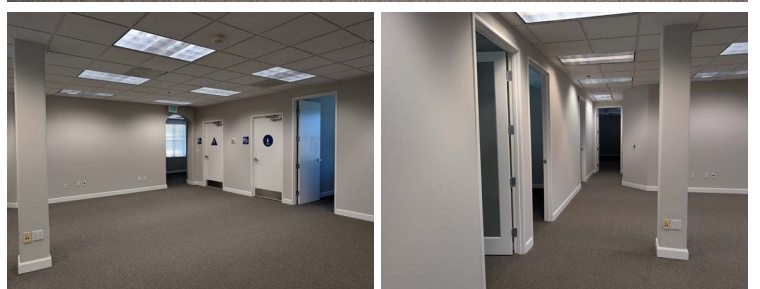
201	± 1,815 SF
202	± 2,502 SF
203	± 1,019 SF
204	± 1,021 SF
TOTAL	± 6,357 SF



43801 Mission Blvd | Fremont, CA 94539

08

Property Photos



43801 Mission Blvd | Fremont, CA 94539

09

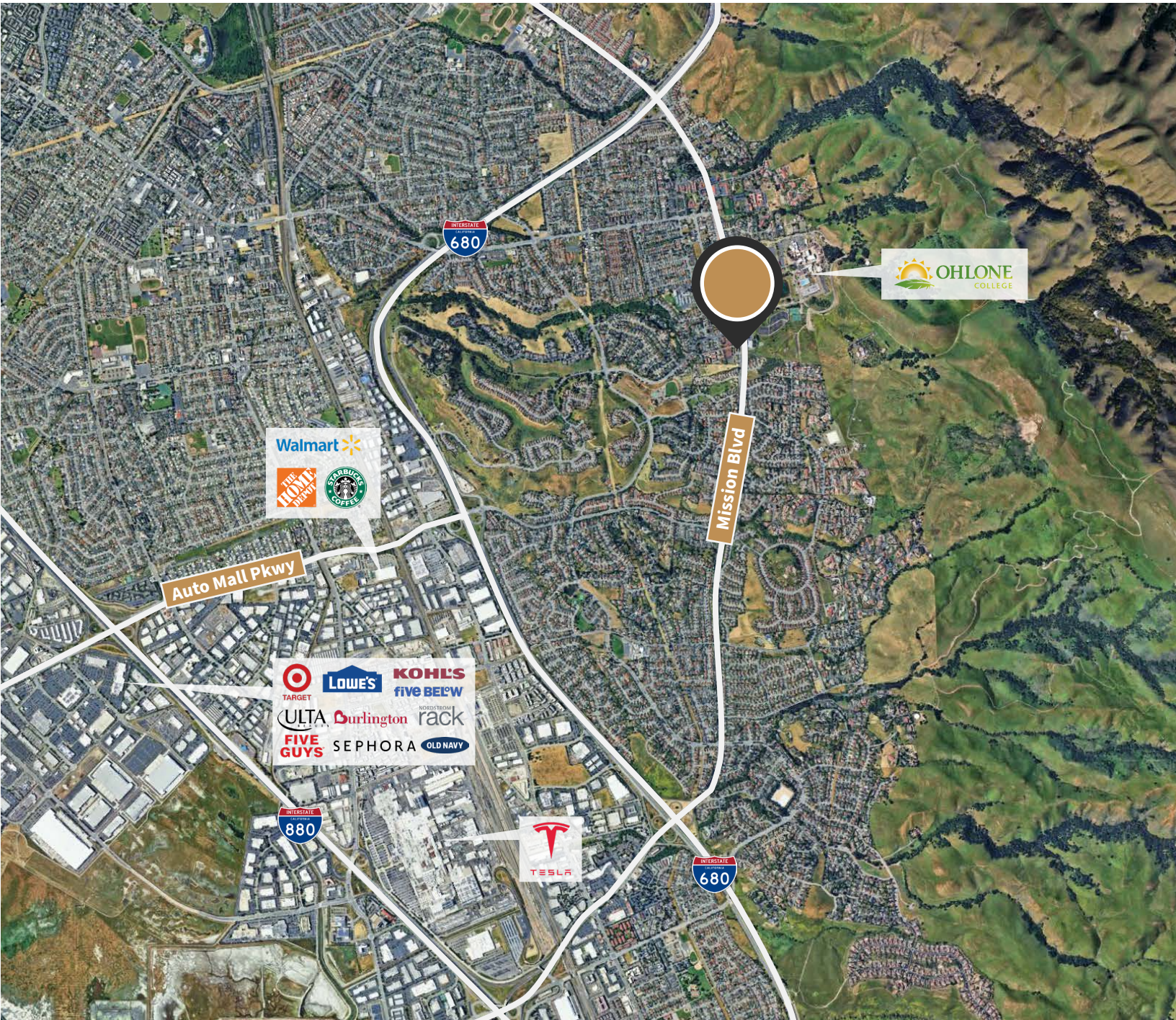
Aerial Maps



43801 Mission Blvd | Fremont, CA 94539

10

Aerial Maps



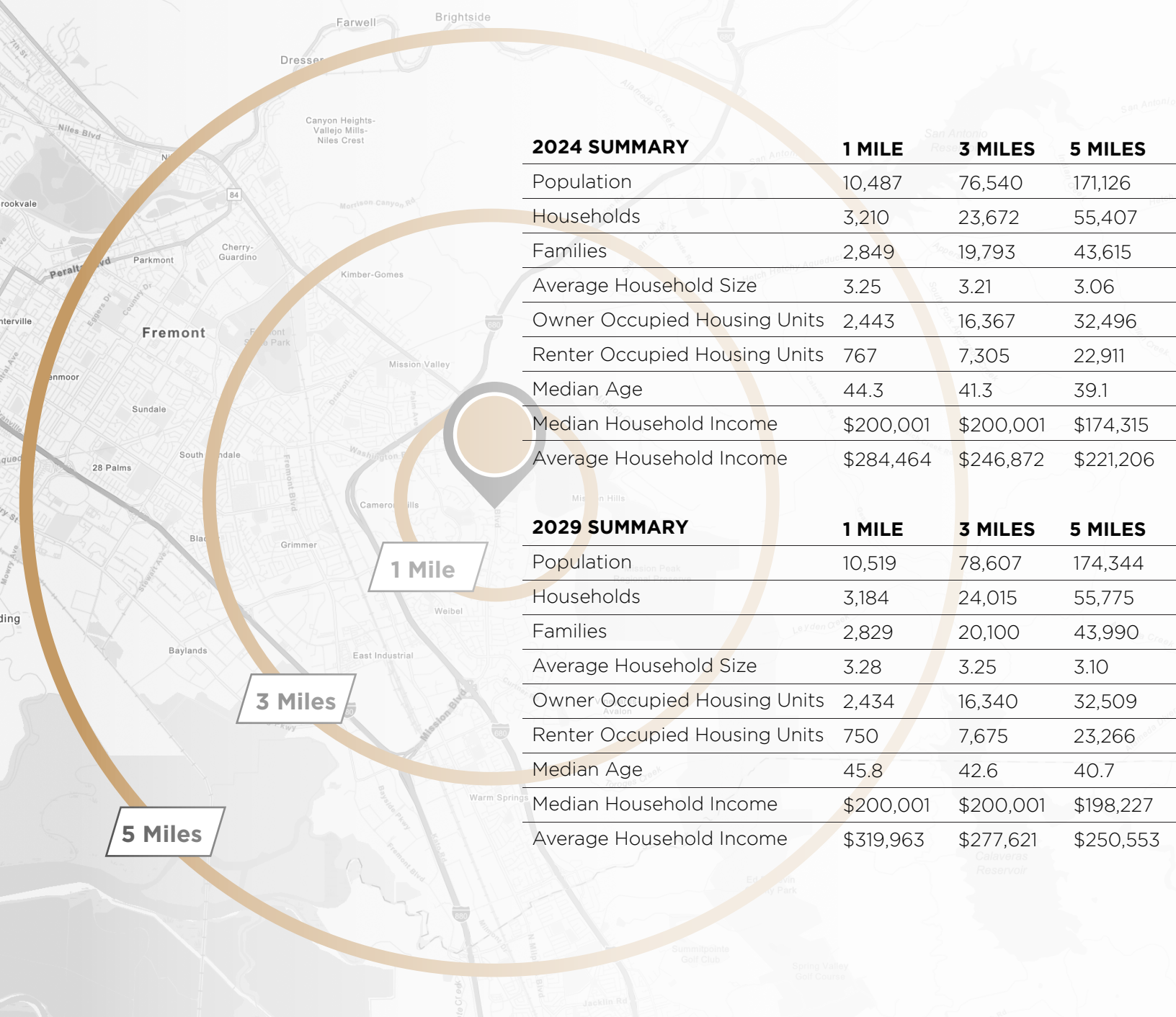
Location Overview



Located in the southeastern region of the San Francisco Bay Area, Fremont, California offers outstanding regional connectivity and economic vitality. The city is strategically positioned along Interstates 880 and 680, with direct access to the Dumbarton Bridge and major transit systems including BART and Amtrak, making it an ideal location for commuting throughout the Bay Area. Fremont is also within close proximity to major employment hubs such as Silicon Valley, San Jose, and Oakland, making it a desirable base for residents and businesses alike.

Fremont boasts a highly educated and affluent population, with one of the highest median household incomes in California. The city is home to a wide range of industries including clean technology, life sciences, and advanced manufacturing, supported by major employers such as Tesla, Lam Research, and Seagate. In addition to its economic strengths, Fremont offers high-quality public schools, expansive parks, and a strong commitment to sustainability, making it a well-rounded, future-forward community and a prime location for long-term investment.

Demographics



2024 SUMMARY	1 MILE	3 MILES	5 MILES
Population	10,487	76,540	171,126
Households	3,210	23,672	55,407
Families	2,849	19,793	43,615
Average Household Size	3.25	3.21	3.06
Owner Occupied Housing Units	2,443	16,367	32,496
Renter Occupied Housing Units	767	7,305	22,911
Median Age	44.3	41.3	39.1
Median Household Income	\$200,001	\$200,001	\$174,315
Average Household Income	\$284,464	\$246,872	\$221,206

2029 SUMMARY	1 MILE	3 MILES	5 MILES
Population	10,519	78,607	174,344
Households	3,184	24,015	55,775
Families	2,829	20,100	43,990
Average Household Size	3.28	3.25	3.10
Owner Occupied Housing Units	2,434	16,340	32,509
Renter Occupied Housing Units	750	7,675	23,266
Median Age	45.8	42.6	40.7
Median Household Income	\$200,001	\$200,001	\$198,227
Average Household Income	\$319,963	\$277,621	\$250,553



CONTACT

Yuan Chang | Vice President

DRE#: 01352021 | (408) 417-0099
YChang@AiCREPartners.com

Ronald Lin | Director

DRE#: 01959413 | (909) 859-9780
RLin@AiCREPartners.com

Michael H. Young | Advisor

DRE#: 02003601 | (415) 866-6470
MYoung@AiCREPartners.com



THE ASIA GROUP
american strategic investment advisors