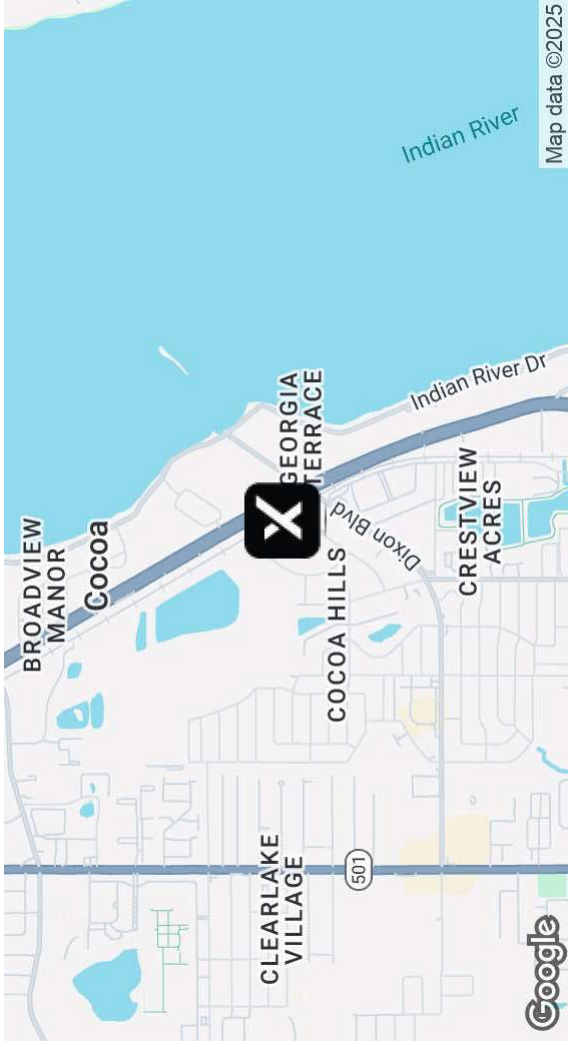


# FOR SALE | 808 Dixon Blvd

Cocoa, FL 32922



Map data ©2025

## OFFERING SUMMARY

Sale Price:	\$559,500
Building Size:	7,800 SF
Lot Size:	14,990 SF
Number of Units:	1
Price / SF:	\$71.73
Year Built:	1963
Zoning:	CN

## PROPERTY OVERVIEW

Building Size: 7,500 sq ft  
Price: \$559,500 - Priced to sell!  
Location: Prime spot off US 1 retail corridor at Dixon Blvd.  
Parking: Approximately 12 spaces

Interior Features: Large Open Showroom, two restrooms, storage/office space

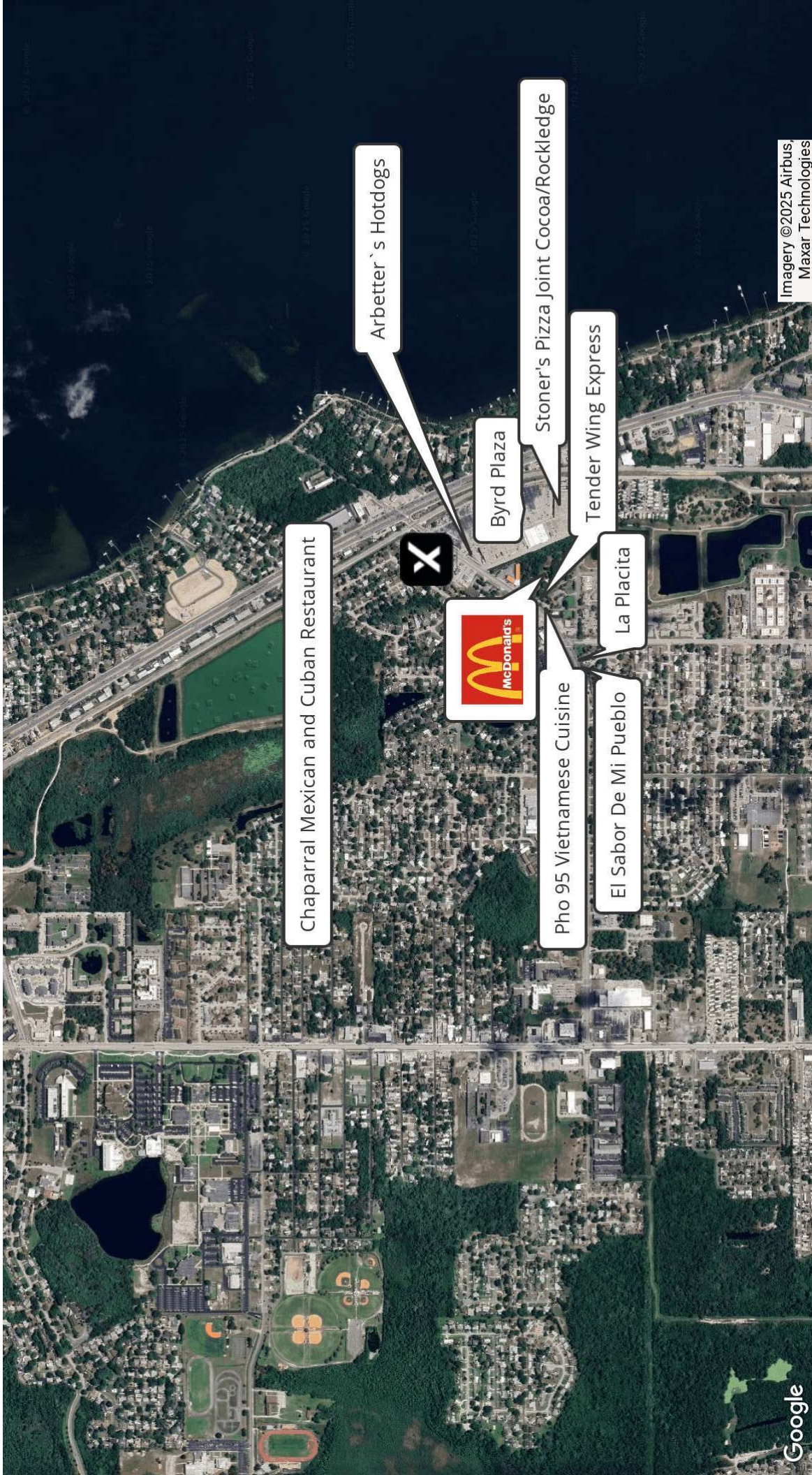
**Holly Carver**  
321.243.8967  
holly.carver@expcommercial.com



exp Commercial, LLC, its direct and indirect parents and their subsidiaries (together, "We") obtained the information above from sources believed to be reliable, however, We have not verified its accuracy and make no guarantee, warranty or representation, expressed or implied, about such information. The information contained above is submitted subject to the possibility of errors, omissions, price changes, prior sale, lease or financing, or withdrawal without notice. Any projections, opinions, assumptions or estimates of the information contained above or provided in connection therewith, either expressed or implied, are for example only, and they may not represent current or future performance of the subject property. You, together with your tax and legal advisors, should conduct your own thorough investigation of the subject property and potential investment.

# FOR SALE | 808 Dixon Blvd

Cocoa, FL 32922



Imagery ©2025 Airbus,  
Maxar Technologies

**Holly Carver**  
321.243.8967  
holly.carver@expcommercial.com

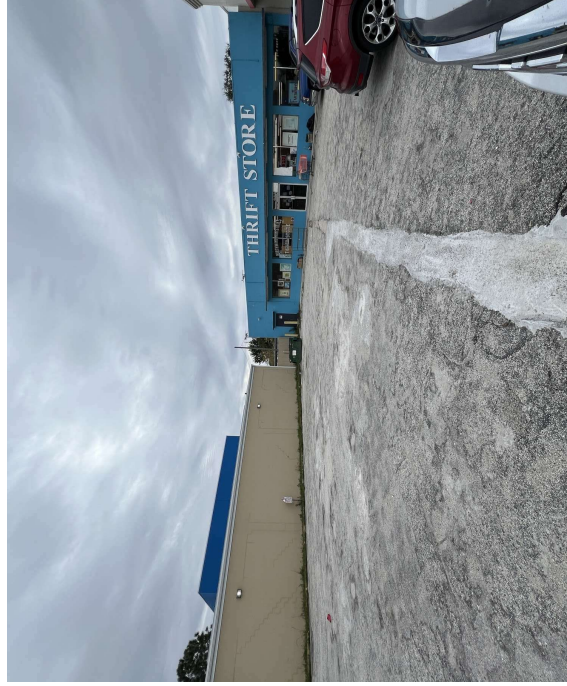
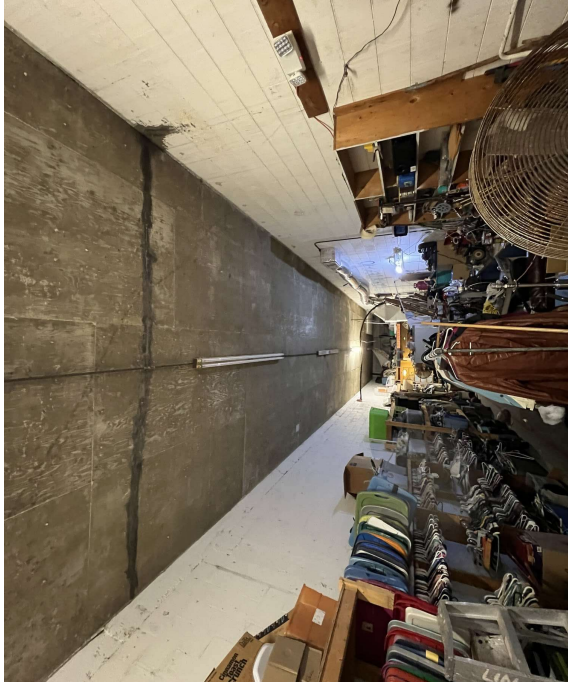
**exp**  
COMMERCIAL

**ROCKET CITY**  
COMMERCIAL **exp**  
COMMERCIAL

exp Commercial, LLC, its direct and indirect parents and their subsidiaries (together, "we") obtained the information above from sources believed to be reliable, however, we have not verified its accuracy and make no guarantee, warranty or representation, expressed or implied, about such information. The information contained above is submitted subject to the possibility of errors, omissions, price changes, rent or other conditions, prior sale, lease or financing, or withdrawal without notice. Any projections, opinions, assumptions or estimates of the information contained above or provided in connection therewith, either expressed or implied, are for example only, and they may not represent current or future performance of the subject property. You, together with your tax and legal advisors, should conduct your own thorough investigation of the subject property and potential investment.

# FOR SALE | 808 Dixon Blvd

Cocoa, FL 32922



Holly Carver

321.243.8967

[holly.carver@expcommercial.com](mailto:holly.carver@expcommercial.com)

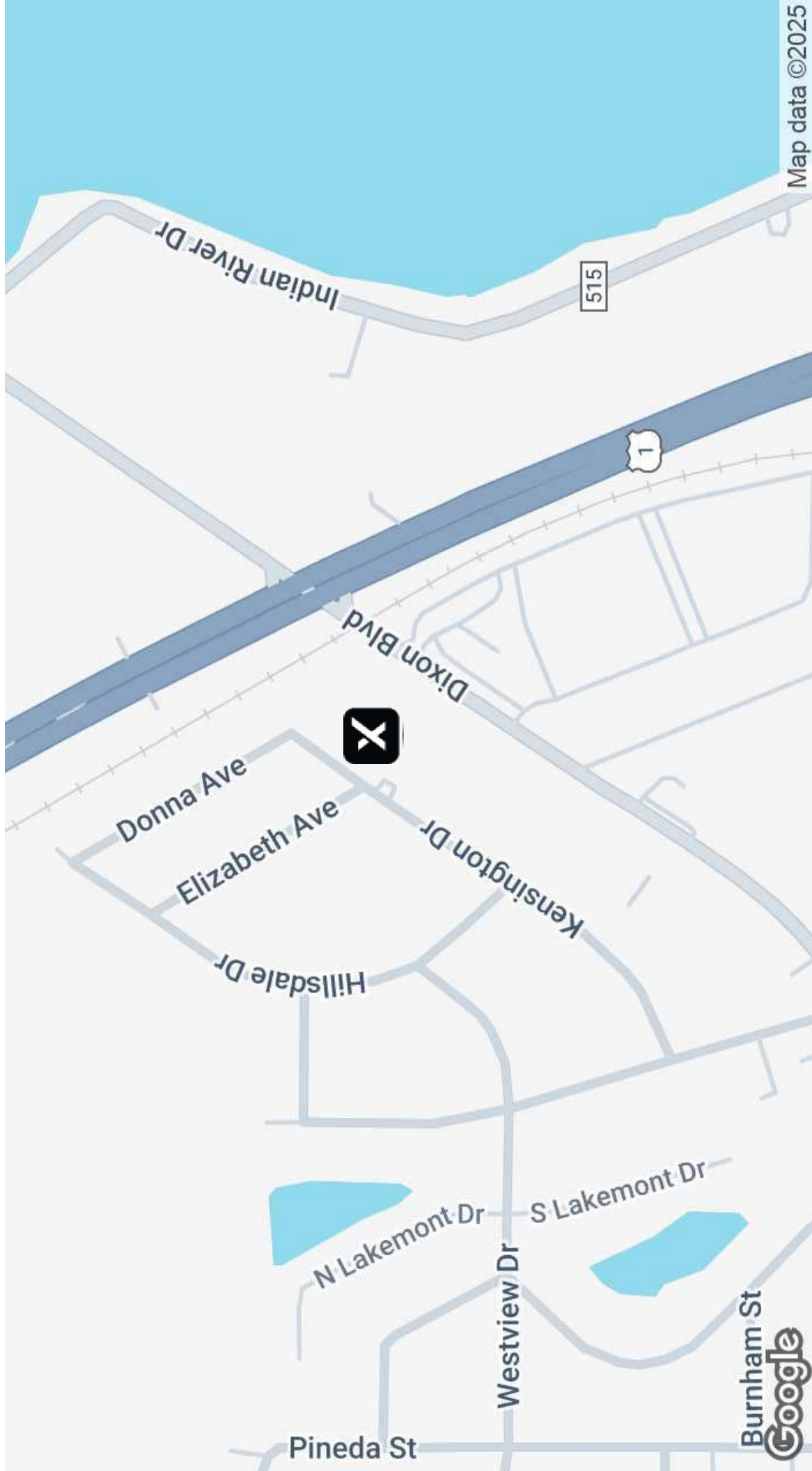
**exp**  
COMMERCIAL

ROCKET CITY  
COMMERCIAL **exp**  
COMMERCIAL

exp Commercial, LLC, its direct and indirect parents and their subsidiaries (together, "We") obtained the information above from sources believed to be reliable, however, We have not verified its accuracy and make no guarantee, warranty or representation, expressed or implied, about such information. The information contained above is submitted subject to the possibility of errors, omissions, price changes, rent or other conditions, prior sale, lease or financing, or withdrawal without notice. Any projections, opinions, assumptions or estimates of the information contained above or provided in connection therewith, either expressed or implied, are for example only, and they may not represent current or future performance of the subject property. You, together with your tax and legal advisors, should conduct your own thorough investigation of the subject property and potential investment.

# FOR SALE | 808 Dixon Blvd

Cocoa, FL 32922



Map data ©2025

**Holly Carver**  
321.243.8967  
holly.carver@expcommercial.com

**exp**  
COMMERCIAL

**ROCKET CITY**  
COMMERCIAL  
**exp**  
COMMERCIAL

exp Commercial, LLC, its direct and indirect parents and their subsidiaries (together, "we") obtained the information above from sources believed to be reliable, however, we have not verified its accuracy and make no guarantee, warranty or representation, expressed or implied, about such information. The information contained above is submitted subject to the possibility of errors, omissions, price changes, rent or other conditions, prior sale, lease or financing, or withdrawal without notice. Any projections, opinions, assumptions or estimates of the information contained above or provided in connection therewith, either expressed or implied, are for example only, and they may not represent current or future performance of the subject property. You, together with your tax and legal advisors, should conduct your own thorough investigation of the subject property and potential investment.

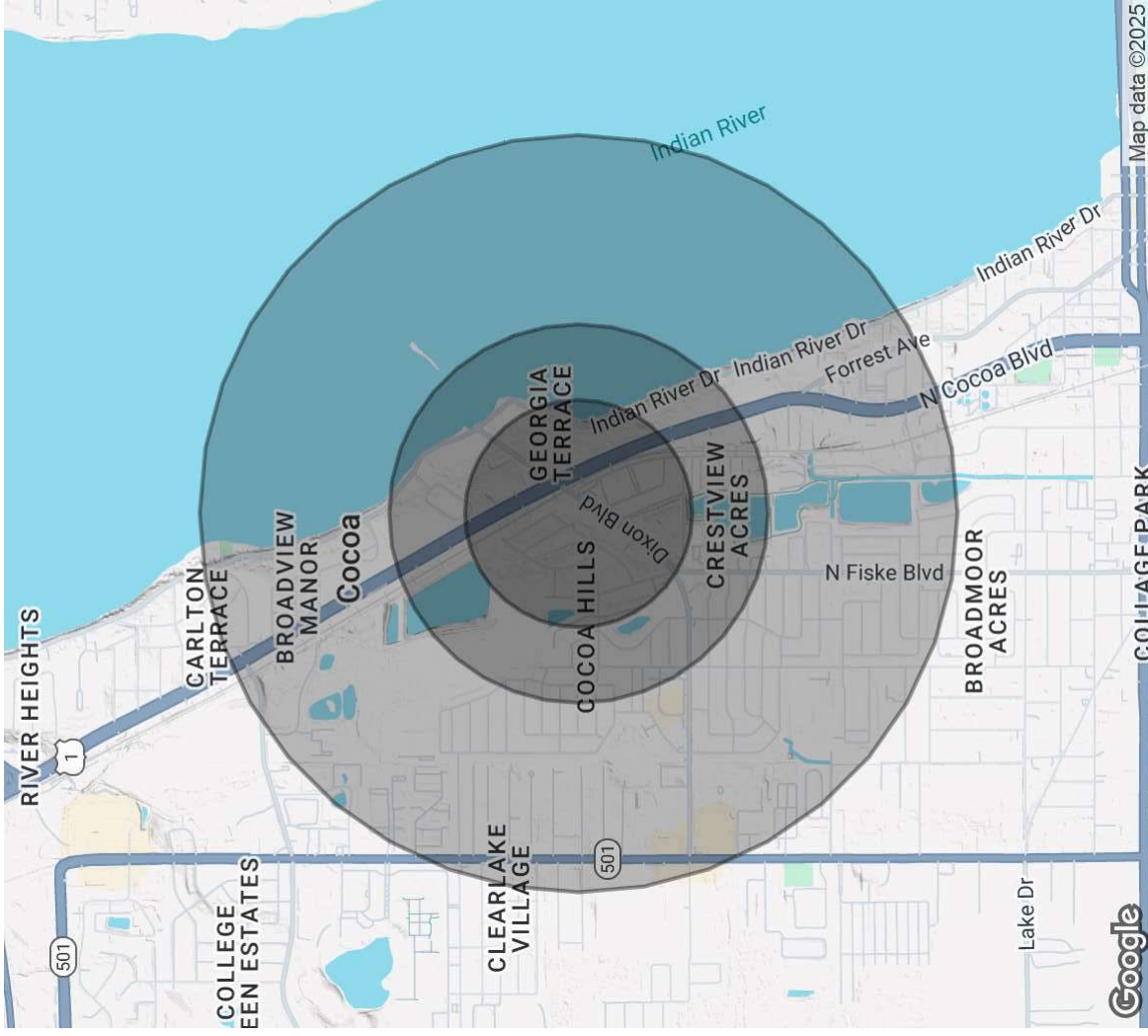
# FOR SALE | 808 Dixon Blvd

Cocoa, FL 32922

POPULATION	0.3 MILES	0.5 MILES	1 MILE
Total Population	644	2,198	7,196
Average Age	44	42	41
Average Age (Male)	42	40	40
Average Age (Female)	46	43	43

HOUSEHOLDS & INCOME	0.3 MILES	0.5 MILES	1 MILE
Total Households	295	970	3,107
# of Persons per HH	2.2	2.3	2.3
Average HH Income	\$66,833	\$62,462	\$62,200
Average House Value	\$258,106	\$241,401	\$229,797

Demographics data derived from AlphaMap



Holly Carver

321.243.8967

holly.carver@expcommercial.com

**exp**  
COMMERCIAL

ROCKET CITY  
COMMERCIAL **exp**  
COMMERCIAL

exp Commercial, LLC, its direct and indirect parents and their subsidiaries (together, "We") obtained the information above from sources believed to be reliable, however, We have not verified its accuracy and make no guarantee, warranty or representation, expressed or implied, about such information. The information contained above is submitted subject to the possibility of errors, omissions, price changes, prior sale, lease or financing, or withdrawal without notice. Any projections, opinions, assumptions or estimates of the information contained above or provided in connection therewith, either expressed or implied, are for example only, and they may not represent current or future performance of the subject property. You, together with your tax and legal advisors, should conduct your own thorough investigation of the subject property and potential investment.

Map data ©2025