

10001 CARLISLE AVENUE  
RICHMOND, VA

*The Schoolhouse at Artisan Hill*



*For*

**LEASE**

office **SPACE**

**3,000 SF**

**Kaylin Farruggio**

Richmond, VA

+1 804 802 6125

kaylin.phillips@jll.com

**Jimmy Appich**

Richmond, VA

+1 804 200 6420

jimmy.appich@jll.com



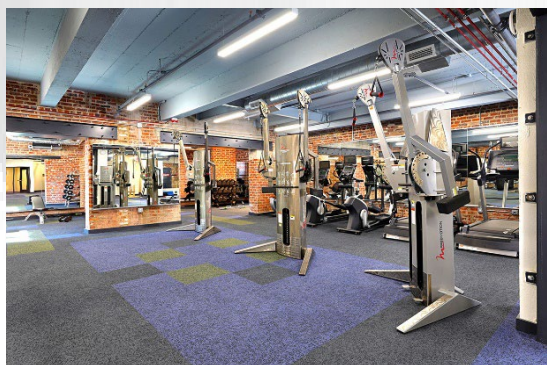
*Achieve  
Ambitions*



# PROPERTY SUMMARY

This historic restored schoolhouse sports numerous features including original architectural details, hardwood floors, slate staircases and huge banks of mullioned window. On site amenities include apartments, artist studios, market cafe, restaurant, ceramic studio, full gym, pool access and event venue rentals.

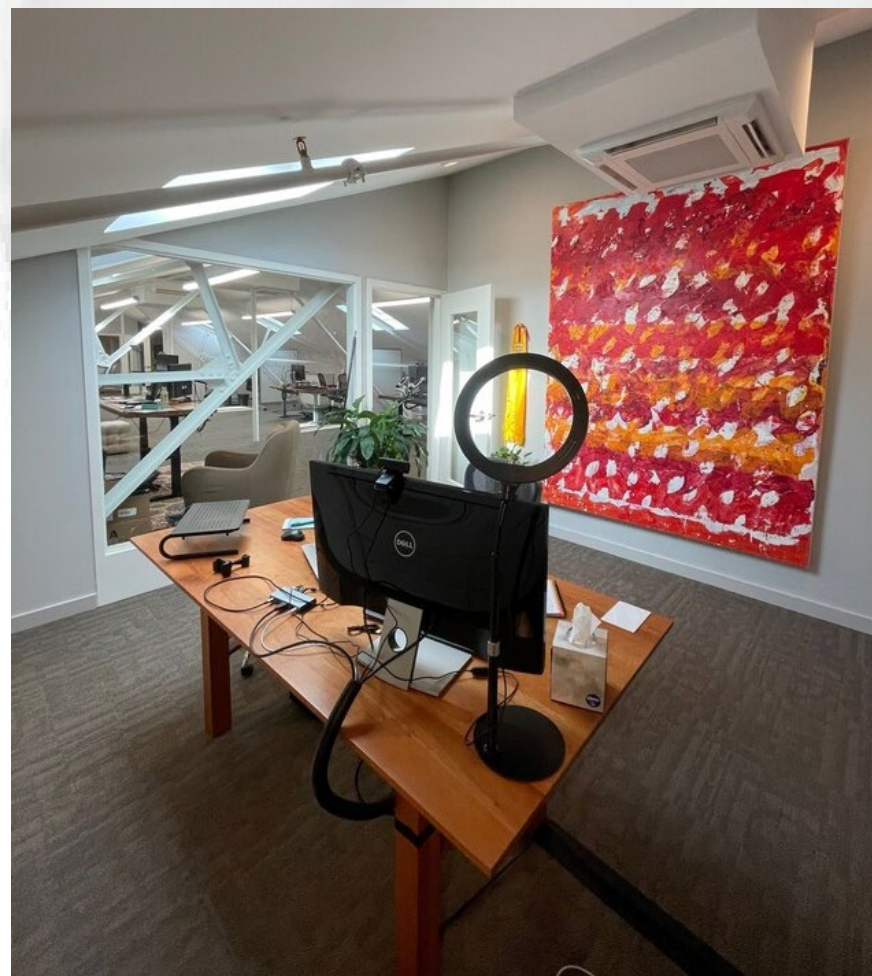
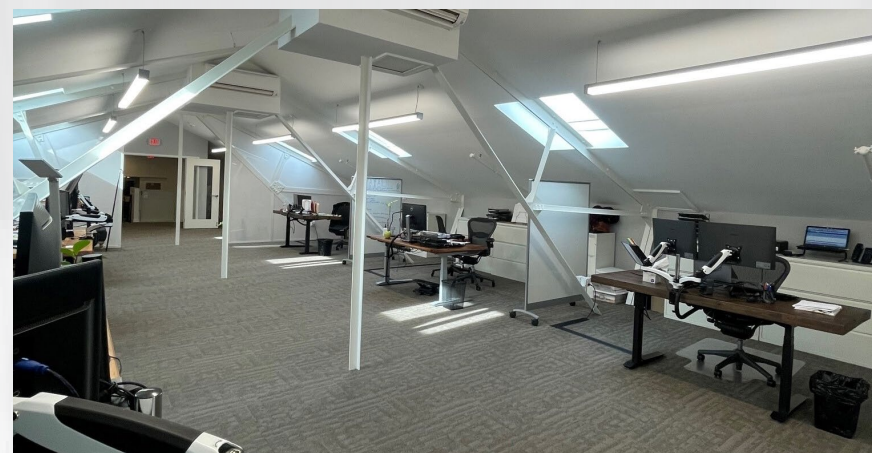
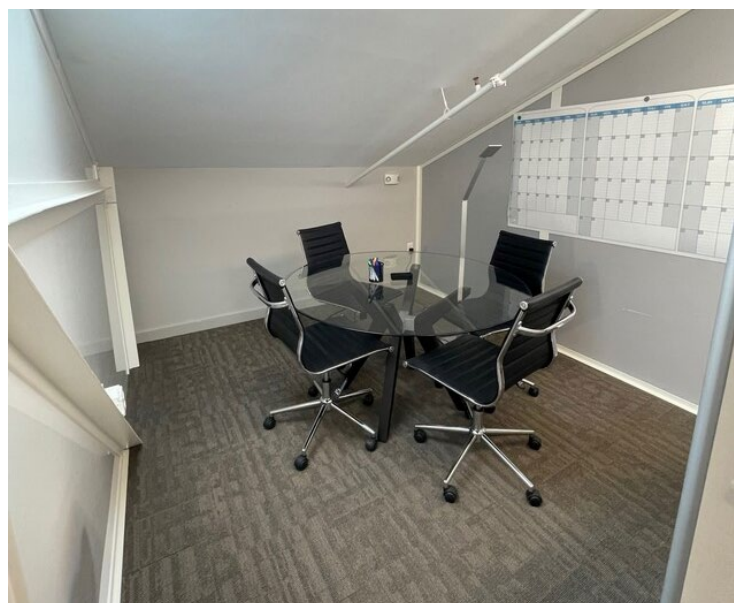
- **Suite available:**
  - **4<sup>th</sup> floor Suite: 3,000 SF**
- **Convenient access to the James River, Virginia Capital Bike Trail, downtown Richmond and VCU Medical campus, and RIC airport**
- **Ample on-site parking**



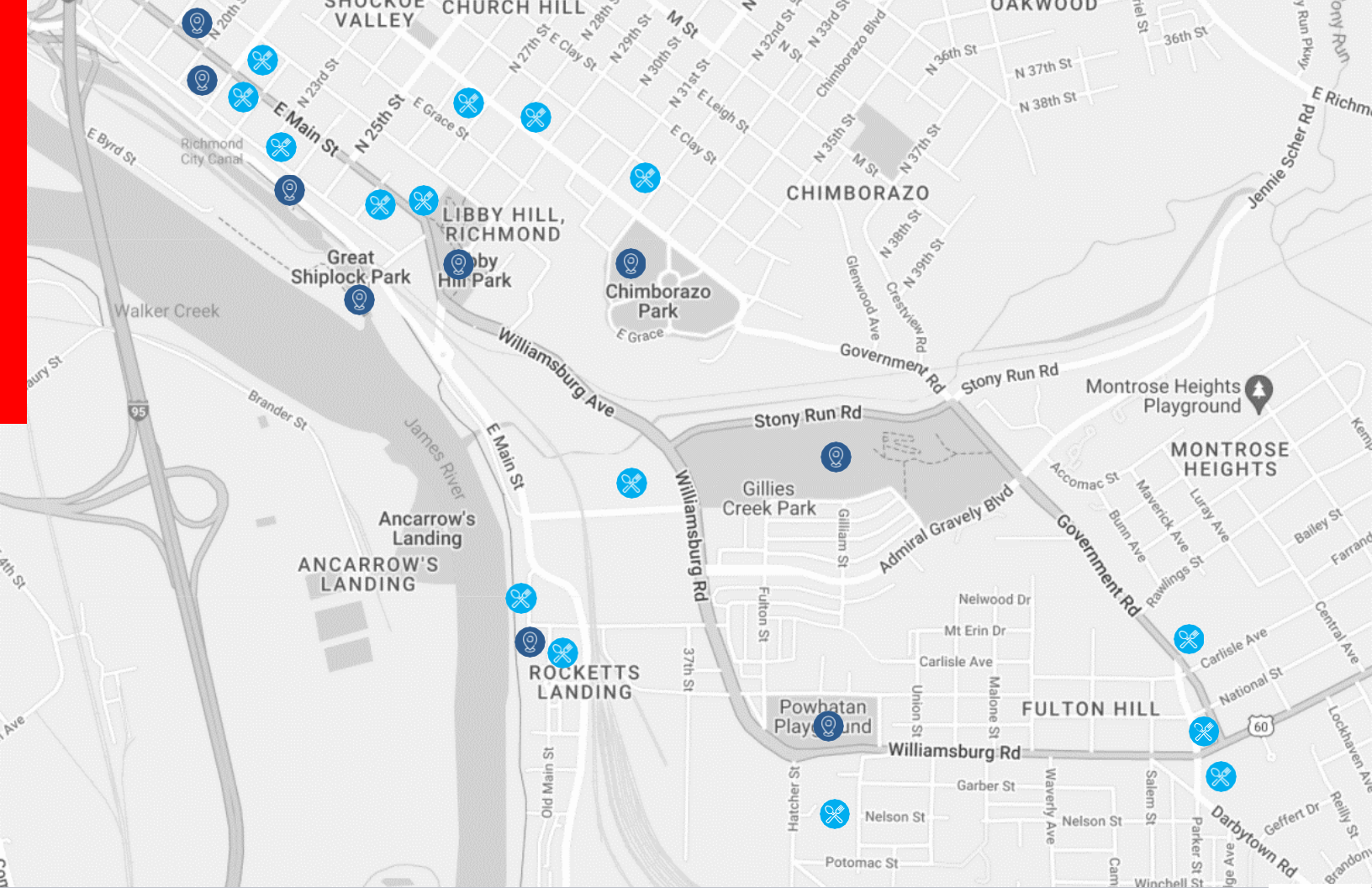


# 4<sup>TH</sup> FLOOR: 3,000 SF

- Newly renovated private suite
- Dormer windows with city views, and skylight
- Adjacent break room, restrooms, kitchenette and shared conference room
- 2 Private offices/ Huddle rooms







## Dining

Krispies Fried Chicken  
 Star Burger  
 Ocean World Seafood  
 Triple Crossing Beer  
 The Bombay Company  
 The Boathouse  
 Stone Brewing  
 Grisetto  
 Poe's Pub

The Hill Cafe  
 Riverbend Roastery  
 Millie's Diner  
 Bookbinder's Seafood & Steakhouse  
 Grandstaff & Stein  
 Whisk

## Destinations

The Poe Museum  
 Virginia Holocaust Museum  
 The Low Line  
 Great Shiplock Park  
 Libby Hill Park  
 Chimborazo Park  
 Gillies Creek Park  
 Rocketts Landing  
 Powhatan Playground

NEARBY AMENITIES

### Kaylin Farruggio

Richmond, VA  
 +1 804 802 6125  
 kaylin.phillips@jll.com

### Jimmy Appich

Richmond, VA  
 +1 804 200 6420  
 kaylin.phillips@jll.com



*Achieve Ambitions*

Although information has been obtained from sources deemed reliable, JLL does not make any guarantees, warranties or representations, express or implied, as to the completeness or accuracy as to the information contained herein. Any projections, opinions, assumptions or estimates used are for example only. There may be differences between projected and actual results, and those differences may be material. JLL does not accept any liability for any loss or damage suffered by any party resulting from reliance on this information. If the recipient of this information has signed a confidentiality agreement with JLL regarding this matter, this information is subject to the terms of that agreement. ©2020. Jones Lang LaSalle IP, Inc. All rights reserved.