



**kw** McKee **WORKS**  
KELLERWILLIAMS.

# Office/Flex Space

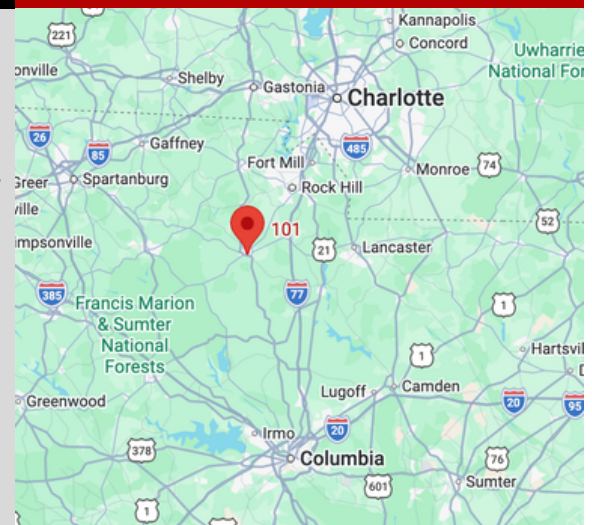
101 Gadsden St, Chester, SC 29706



## Downtown Office/Flex Space

**FOR SALE**

- Parcel # 201-11-07-006-000
- 1221 SF building located in growing Downtown area of Chester, SC
- Zoned CC - Commercial Core in City of Chester
- Some ideal uses: Personal services (salons), professional services (legal, engineering), and business services
- 51 miles to Charlotte-Douglas Int'l Airport, 49 miles to Uptown Charlotte, 60 miles to Columbia, SC



TARA MCKEE  
803.627.8650  
TARA@MCKEWORKS.COM

**\$150,000**

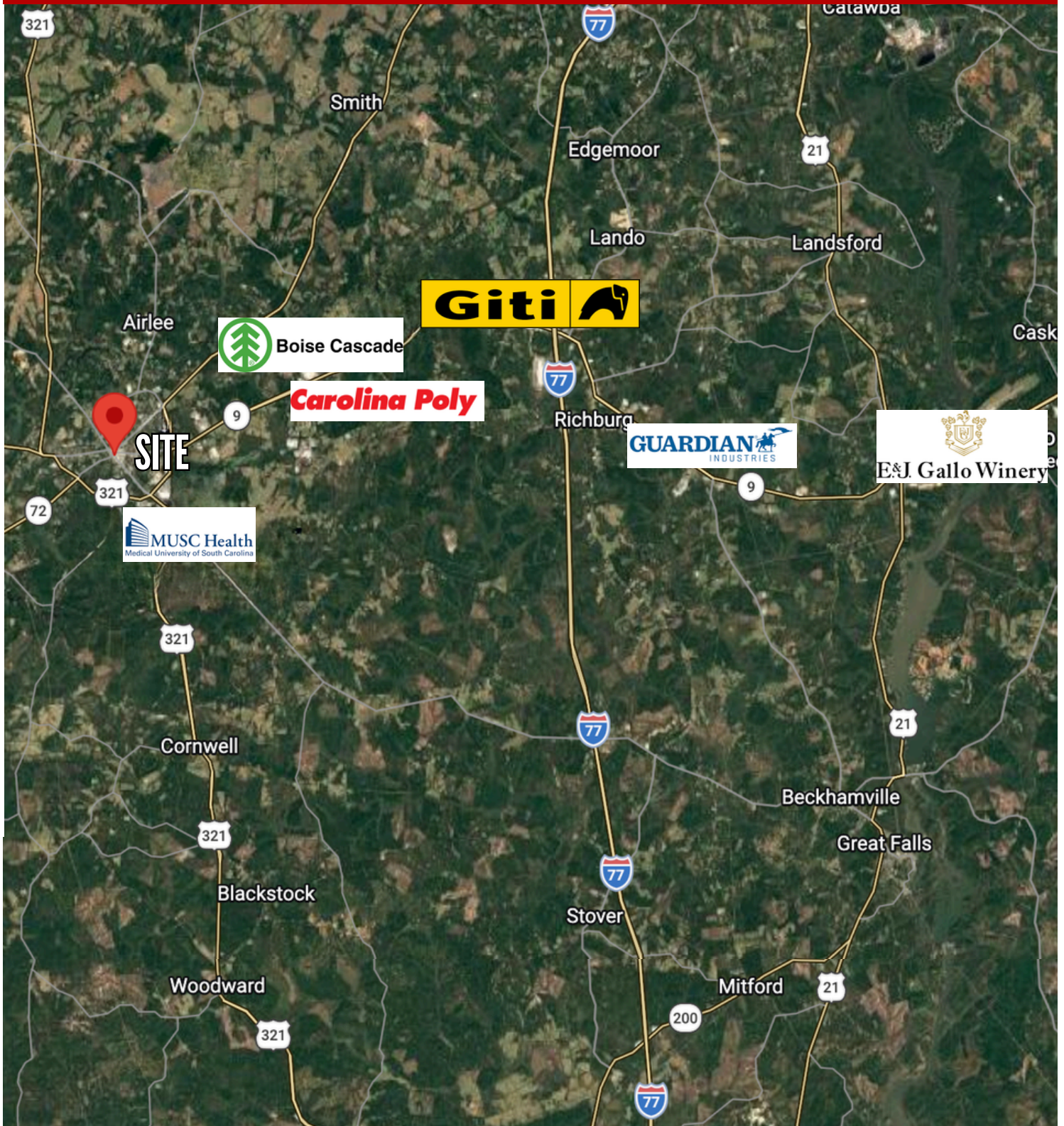


**kw** McKee **WORKS**  
KELLERWILLIAMS.

# Office/Flex Space

101 Gadsden St, Chester, SC 29706

## Aerial Location Map





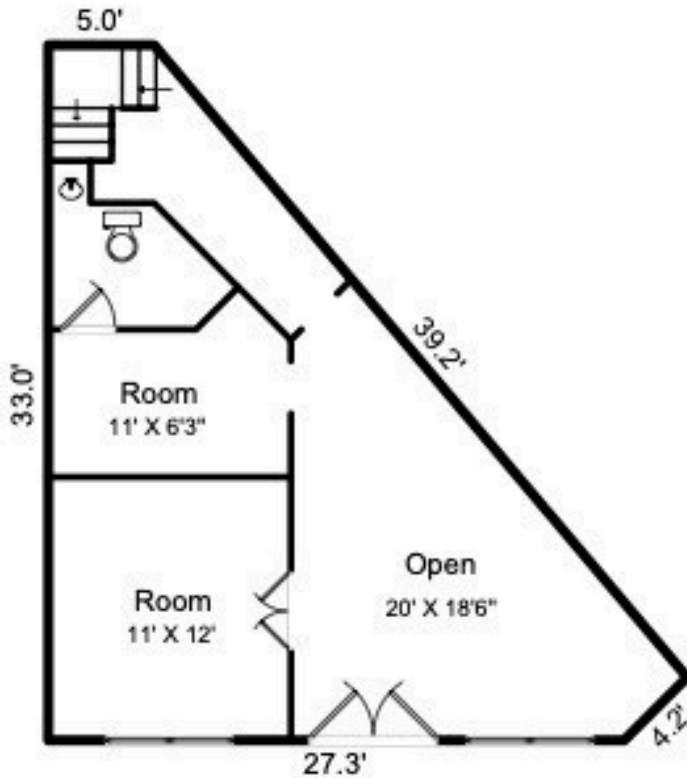
**kw** McKee **WORKS**  
KELLERWILLIAMS.

# Office/Flex Space

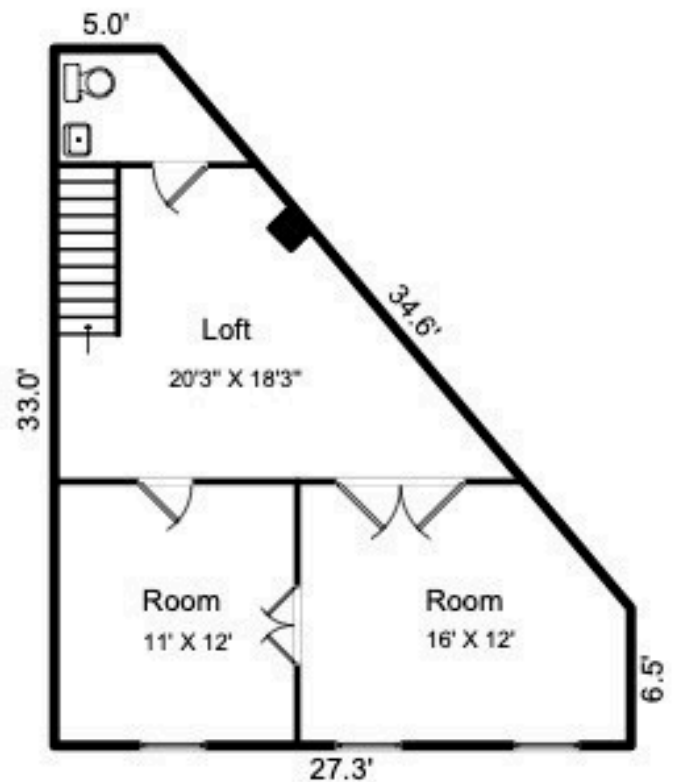
101 Gadsden St, Chester, SC 29706

## Floor Plan

1221.3 sf HLA



First Floor  
615.9sf



Second Floor  
605.4sf