

76 Progress Drive, Stamford CT

Office - Approx. 1,200 - 2,798 SF (see floor plan)

\$18 PSF gross, plus \$3 PSF utilities



+/- 1,200 - 2,798 SF office space on 2nd floor of 119,298 SF flex building

Access via passenger elevator, freight elevator and stairs.

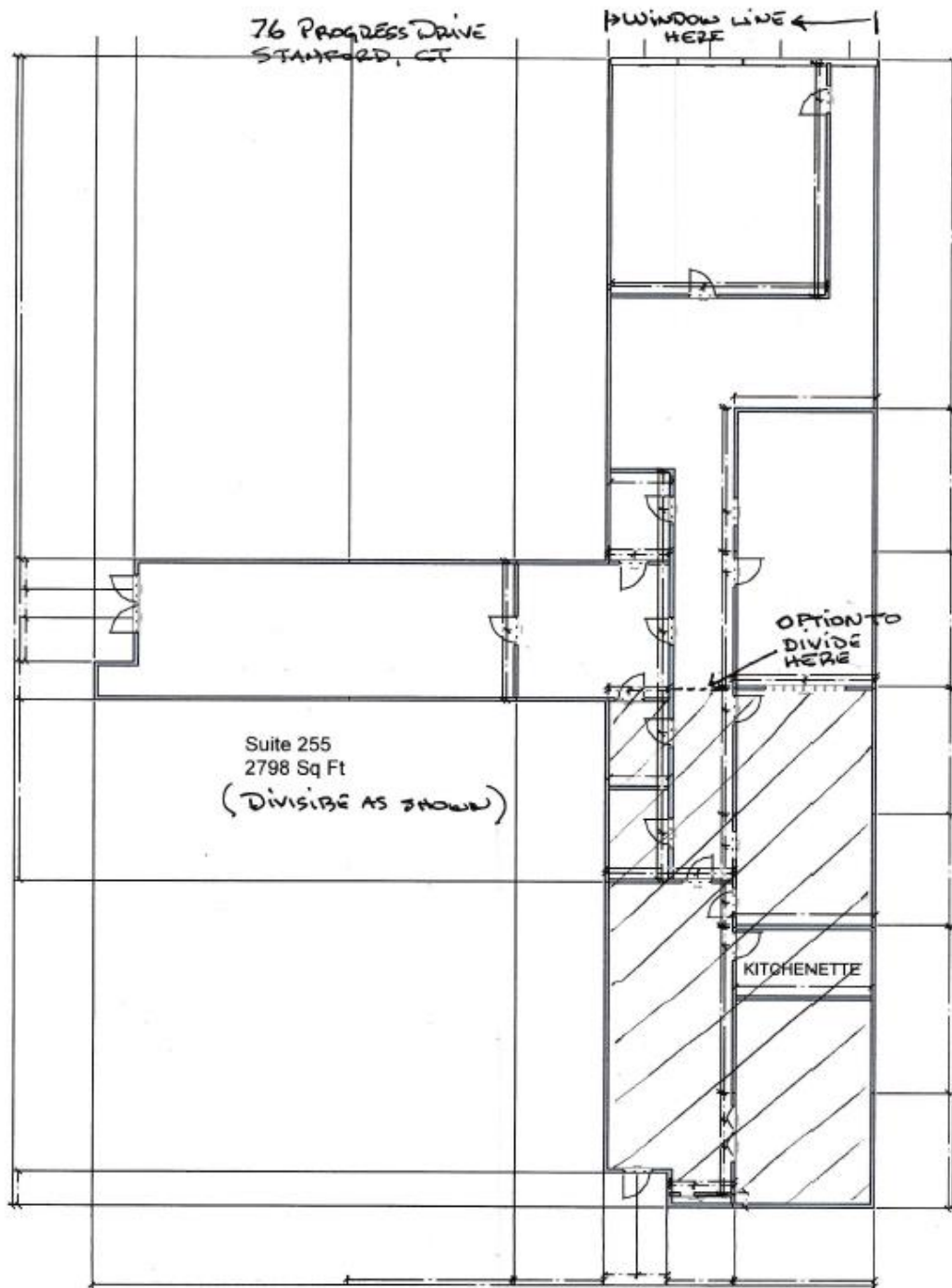
Ample on- site parking.

Proximity to I95 – Less than 1 mile

Exclusive Broker

Jeff Snell
203-551-1375
jeff@pyramidregroup.com

Pyramid Real Estate Group • 20 Summer Street, Stamford, CT 06901
phone: 203.348-8566 • fax: 203.358-9763
www.pyramidregroup.com

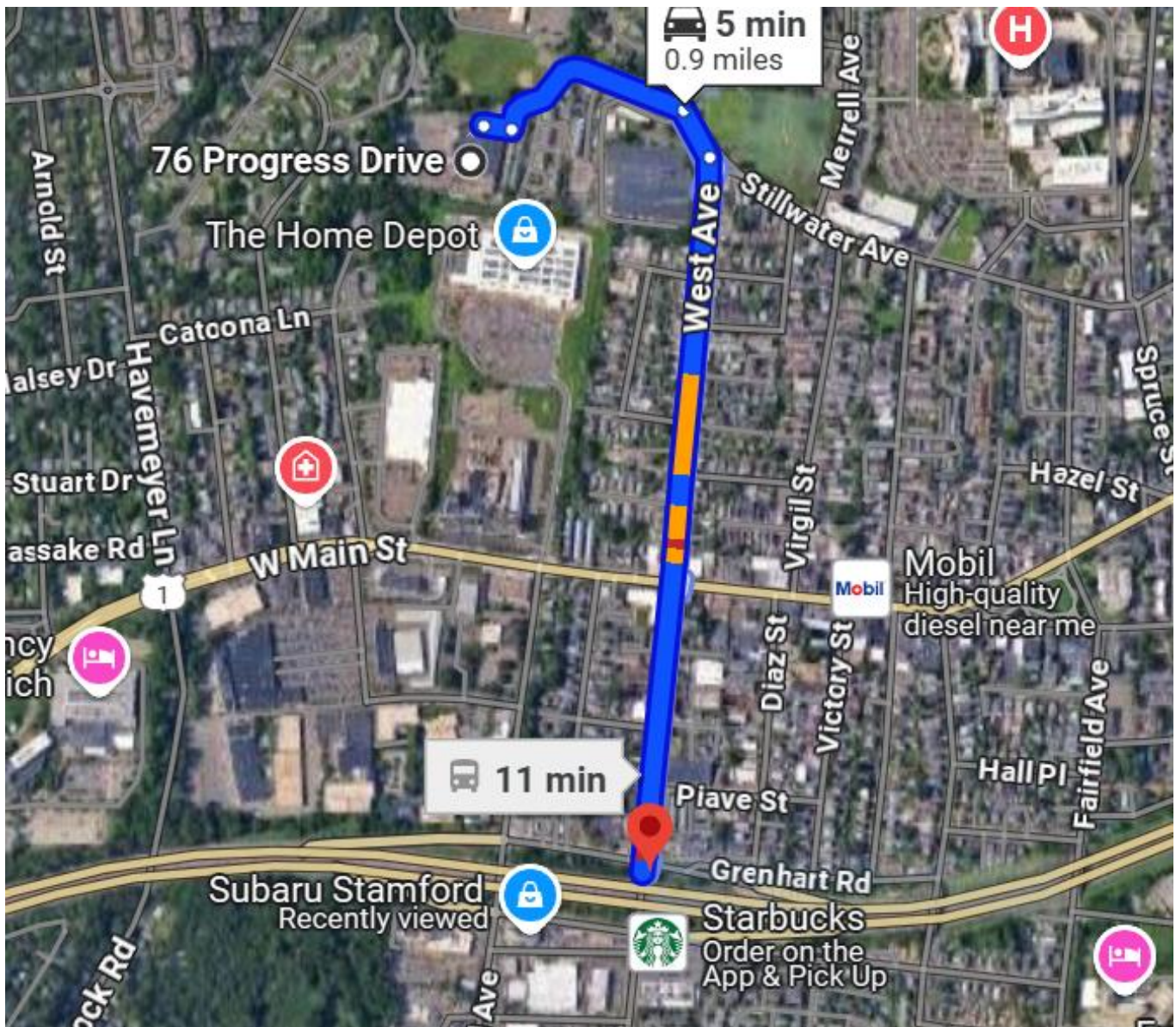


Exclusive Broker

Jeff Snell
203-551-1375
jeff@pyramidregroup.com

Pyramid Real Estate Group • 20 Summer Street, Stamford, CT 06901
phone: 203.348-8566 • fax: 203.358-9763
www.pyramidregroup.com

0.9 Miles, 5 minutes to I95



Exclusive Broker

Jeff Snell
203-551-1375
jeff@pyramidregroup.com

Pyramid Real Estate Group • 20 Summer Street, Stamford, CT 06901
phone: 203.348-8566 • fax: 203.358-9763
www.pyramidregroup.com