



5618 LIBERTY ROAD, CLIMAX, NC 27233

LIBERTY METHODIST MXU

MULTIFAMILY LAND FOR SALE NEAR TOYOTA PLANT

Jonathon Harriss
jharriss@lee-associates.com
O: 919.591.2278
C: 980.226.6738

Dan Koeller
dkoeller@lee-associates.com
O: 919.591.2274
C: 919.349.7857



All information furnished regarding property for sale, rental or financing is from sources deemed reliable, but no warranty or representation is made to the accuracy thereof and same is submitted to errors, omissions, change of price, rental or other conditions prior to sale, lease or financing or withdrawal without notice. No liability of any kind is to be imposed on the broker herein.

MULTIFAMILY LAND FOR SALE LIBERTY METHODIST MXU

Climax, NC 27233

PROPERTY DESCRIPTION

60.13 acres on US 421 Hwy in Guilford County for sale with multifamily zoning in place.

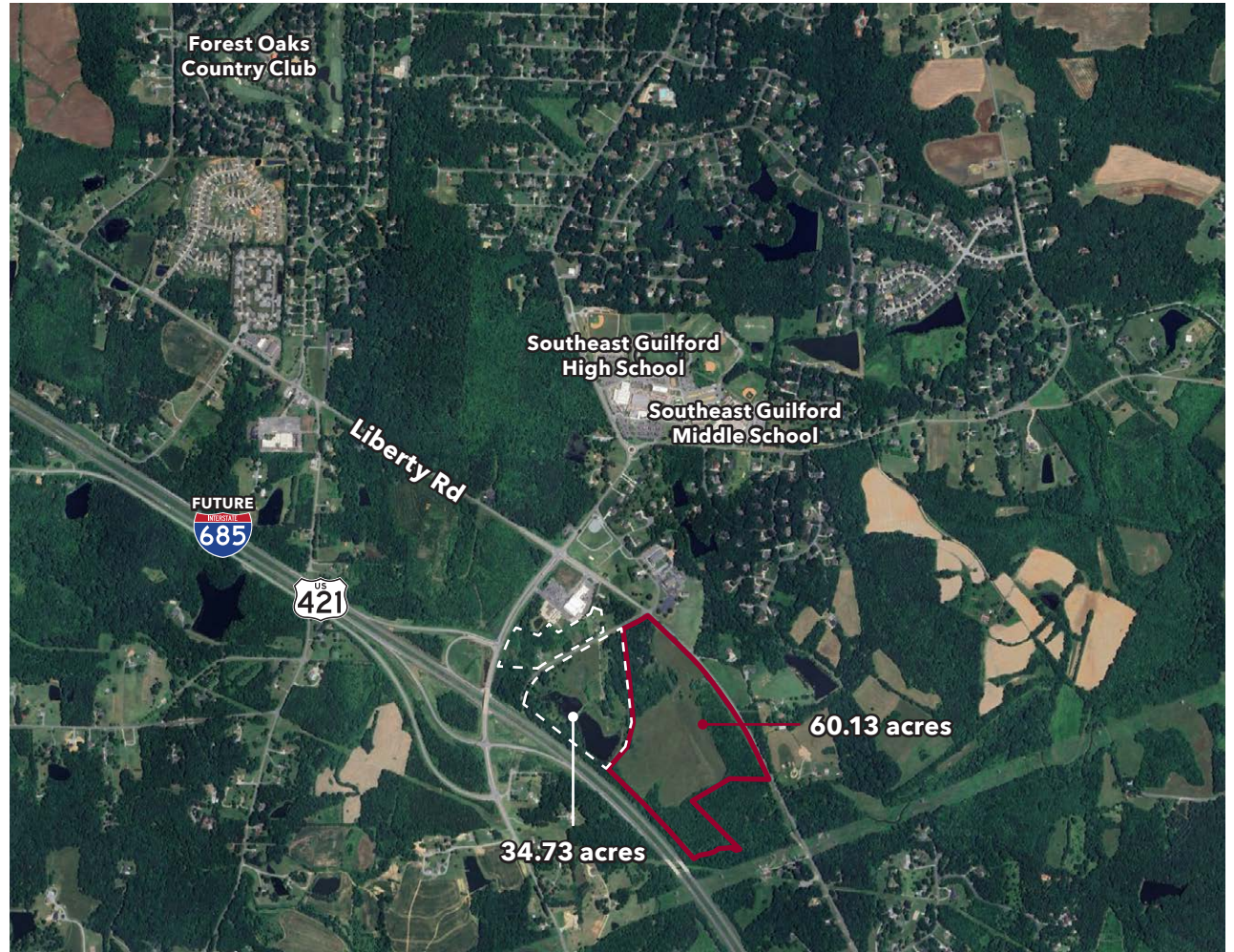
- » CZ-MXU zoning - at least 70% of the site needs to be used for residential. No density limitations in place.
- » Guilford County parcel numbers 124711, 124720, 122331, 122311, 122325, 122310
- » City of Greensboro utilities
- » Additional 34.73 acres adjacent to site available
- » 25 minutes from Piedmont Triad International Airport

LOCATION

The property is located south of Greensboro, less than five miles from I-85 and six miles from the Toyota Battery Plant.

SALE PRICE

\$8,000,000



Jonathon Harriss
jharriss@lee-associates.com
O: 919.591.2278
C: 980.226.6738

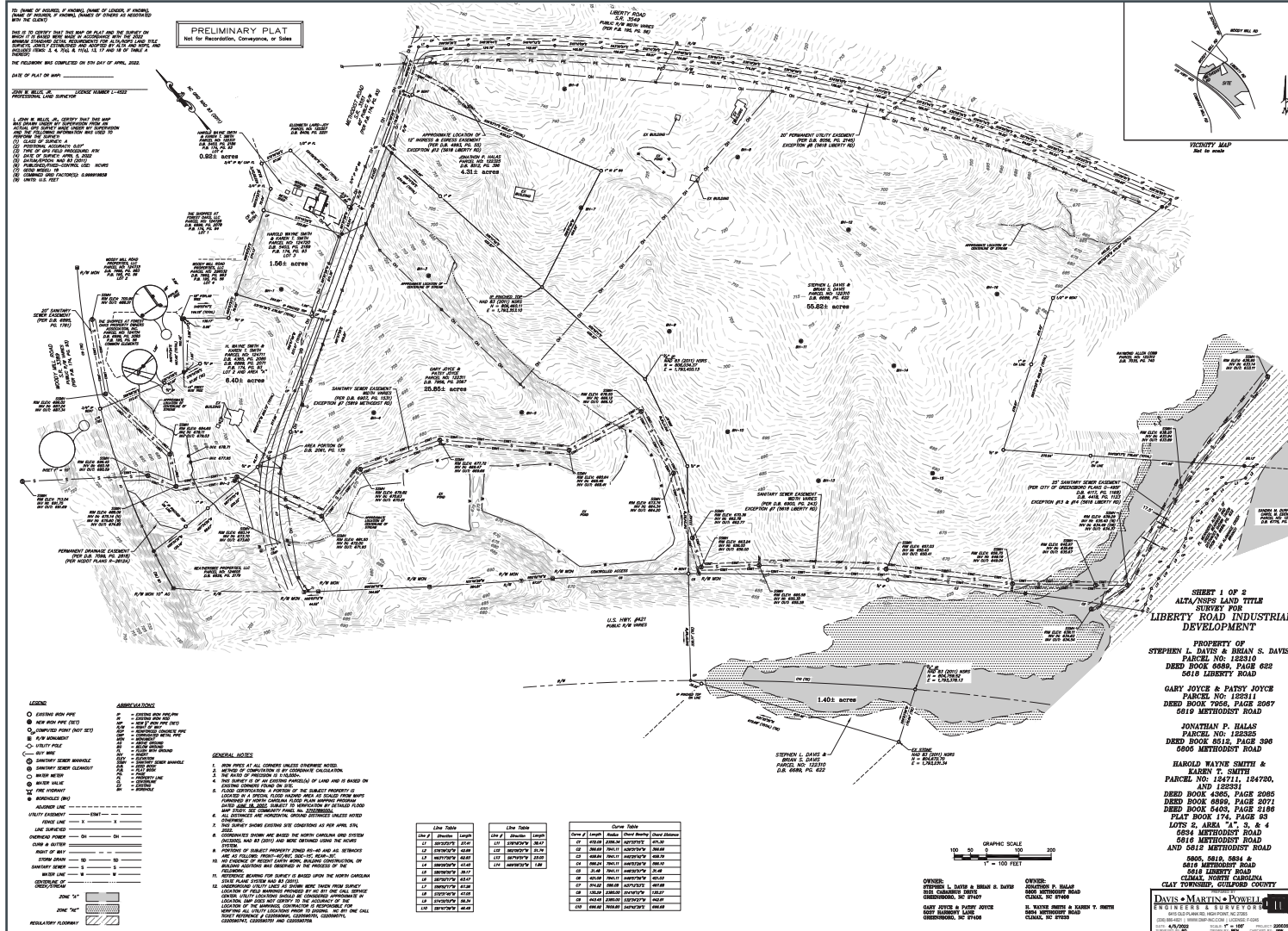
Dan Koeller
dkoeller@lee-associates.com
O: 919.591.2274
C: 919.349.7857

All information furnished regarding property for sale, rental or financing is from sources deemed reliable, but no warranty or representation is made to the accuracy thereof and same is submitted to errors, omissions, change of price, rental or other conditions prior to sale, lease or financing or withdrawal without notice. No liability of any kind is to be imposed on the broker herein.

MULTIFAMILY LAND FOR SALE LIBERTY METHODIST MXU

Climax, NC 27233

LEE & ASSOCIATES
COMMERCIAL REAL ESTATE SERVICES
RALEIGH DURHAM



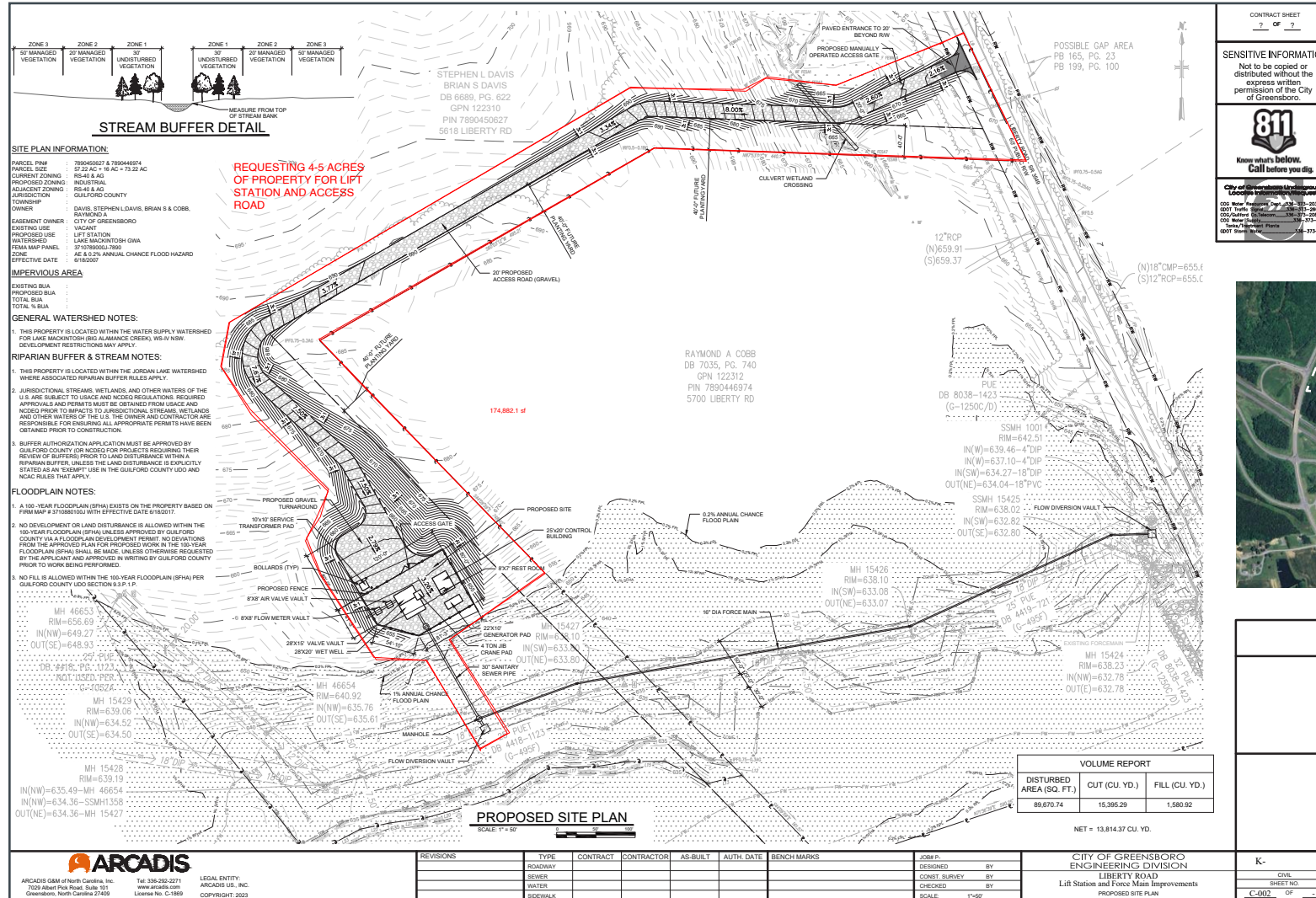
Jonathon Harriss
jharriss@lee-associates.com
O: 919.591.2278
C: 980.226.6738

Dan Koeller
dkoeller@lee-associates.com
O: 919.591.2274
C: 919.349.7857

All information furnished regarding property for sale, rental or financing is from sources deemed reliable, but no warranty or representation is made to the accuracy thereof and same is submitted to errors, omissions, change of price, rental or other conditions prior to sale, lease or financing or withdrawal without notice. No liability of any kind is to be imposed on the broker herein.

MULTIFAMILY LAND FOR SALE LIBERTY METHODIST MXU

Climax, NC 27233



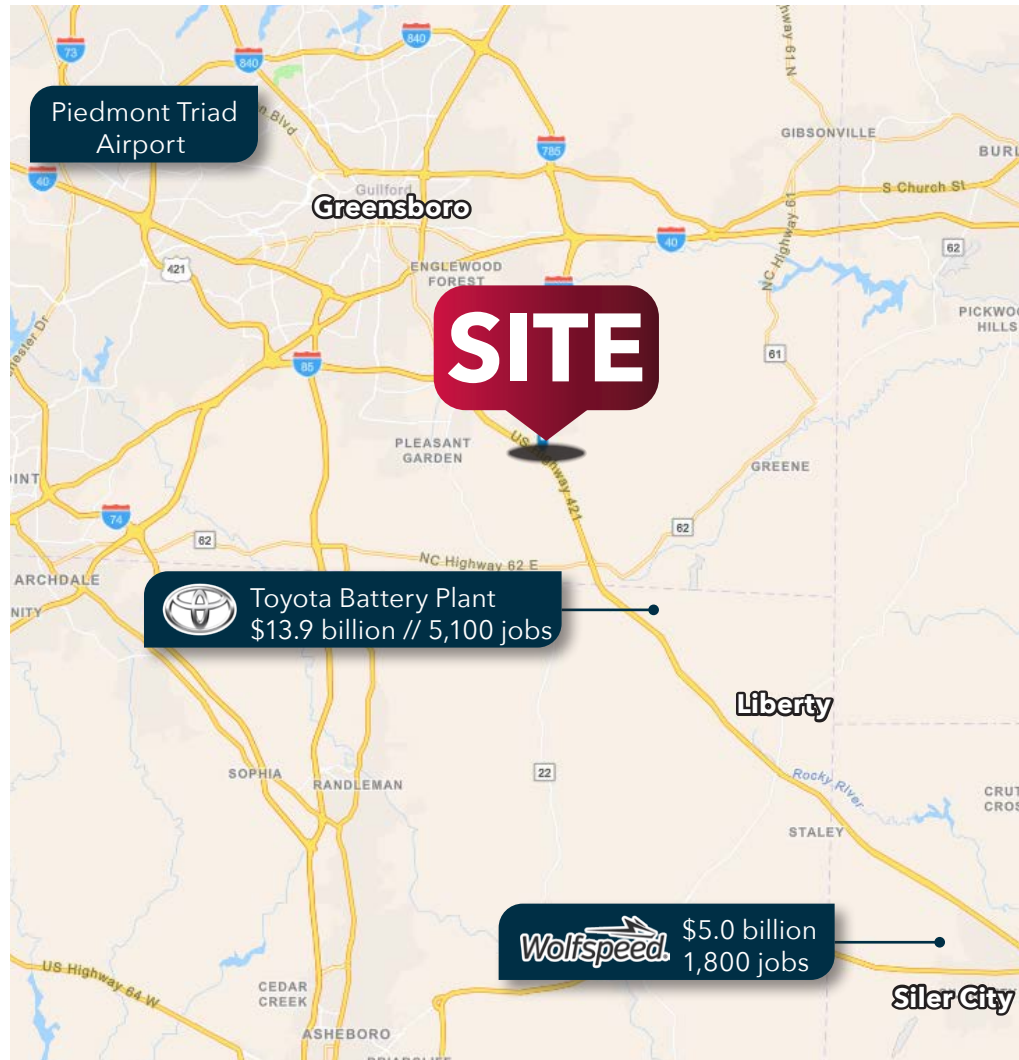
Jonathon Harriss
jharriss@lee-associates.com
O: 919.591.2278
C: 980.226.6738

Dan Koeller
dkoeller@lee-associates.com
O: 919.591.2274
C: 919.349.7857

All information furnished regarding property for sale, rental or financing is from sources deemed reliable, but no warranty or representation is made to the accuracy thereof and same is submitted to errors, omissions, change of price, rental or other conditions prior to sale, lease or financing or withdrawal without notice. No liability of any kind is to be imposed on the broker herein.

MULTIFAMILY LAND FOR SALE LIBERTY METHODIST MXU

Climax, NC 27233



Greensboro is the third largest city in North Carolina, centrally located in the state halfway between Charlotte and Raleigh. The area boasts a population of over 540,000 people and seven colleges and universities. With strong connectivity in interstate highways, rail, and air, the city has a robust manufacturing presence. More than 200 internationally-based firms have a presence in Greensboro.

COMPANIES LOCATED IN GREENSBORO



ROADS

Five major interstates running through and around the city keep travel times low for commutes and heading out of town for work or weekend getaways.

AIRPORTS

Piedmont Triad International Airport excels in getting you where you need to go without sacrificing convenience or customer service.

PORTS

Four port cities are within 285 miles of Greensboro, making access to the global marketplace easy for manufacturers and consumers alike.

PUBLIC TRANSIT

The Greensboro Transit Authority offers both public bus service and a specialized route for college students to make getting around easier than ever.

Jonathon Harriss
jharriss@lee-associates.com
O: 919.591.2278
C: 980.226.6738

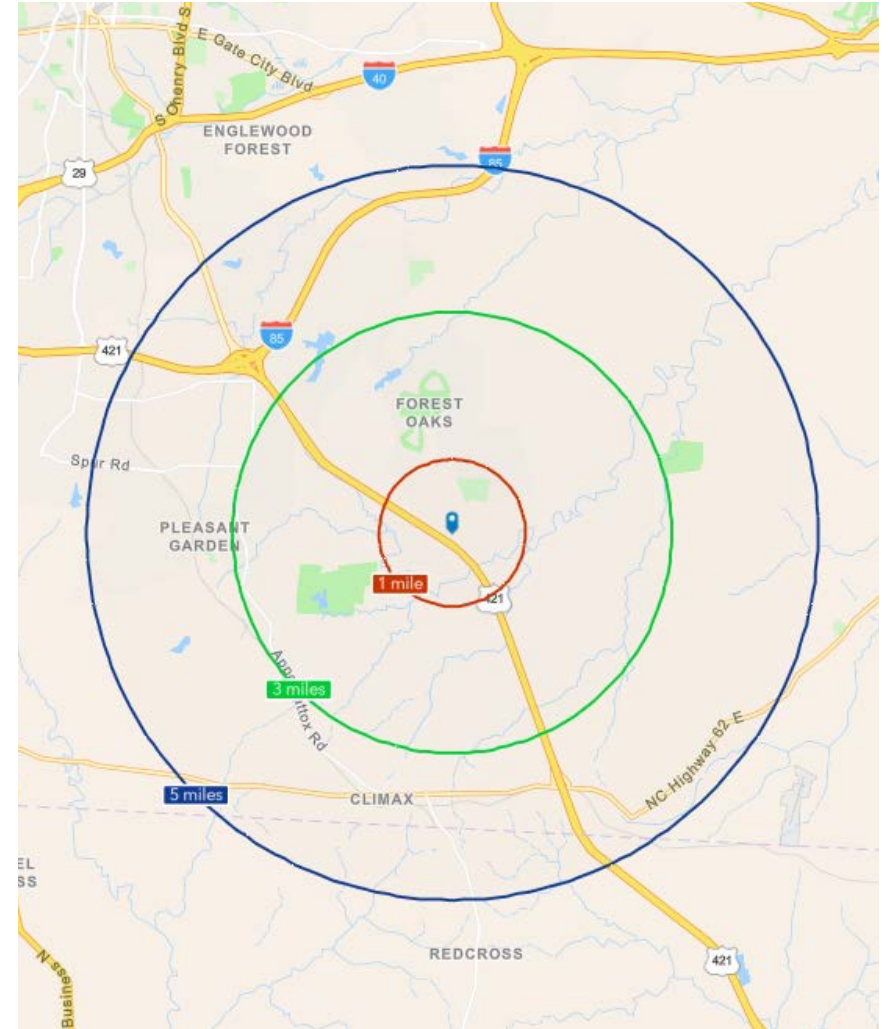
Dan Koeller
dkoeller@lee-associates.com
O: 919.591.2274
C: 919.349.7857

All information furnished regarding property for sale, rental or financing is from sources deemed reliable, but no warranty or representation is made to the accuracy thereof and same is submitted to errors, omissions, change of price, rental or other conditions prior to sale, lease or financing or withdrawal without notice. No liability of any kind is to be imposed on the broker herein.

MULTIFAMILY LAND FOR SALE LIBERTY METHODIST MXU

Climax, NC 27233

	1 MILE	3 MILES	5 MILES
Population (2024)	911	8,881	20,252
Median Age	49.1	48.9	47.3
Average Household Income	\$137,851	\$120,924	\$110,855
Average Home Value	\$349,201	\$342,288	\$325,911
Bachelor's Degree or Higher	42.2%	46.3%	37.8%



Jonathon Harriss
jharriss@lee-associates.com
O: 919.591.2278
C: 980.226.6738

Dan Koeller
dkoeller@lee-associates.com
O: 919.591.2274
C: 919.349.7857

All information furnished regarding property for sale, rental or financing is from sources deemed reliable, but no warranty or representation is made to the accuracy thereof and same is submitted to errors, omissions, change of price, rental or other conditions prior to sale, lease or financing or withdrawal without notice. No liability of any kind is to be imposed on the broker herein.