

ELKO LAND

FOR SALE



PROPERTY DETAILS

3015 Mountain City Hwy., Elko, NV 89801

- 9.25 acres of land for sale - \$2,500,000
- AVAILABLE: Mid-box, retail shop space, pads
- Nearby tenants include: McDonald's, Raley's, The Home Depot, Walmart, Baymont by Wyndham, C-A-L Ranch Stores, Starbucks, Smith's, Matties Taphouse and Grill, Gold Dust West Elko, Stick With Us Amusements

2025 DEMOS



EST. POPULATION

1 MILE » 5,611
3 MILE » 19,793
5 MILE » 23,540



EST. HOUSEHOLDS

1 MILE » 2,090
3 MILE » 8,026
5 MILE » 9,464



EST. AVERAGE HH INCOME

1 MILE » \$130,430
3 MILE » \$109,258
5 MILE » \$113,048

NEWMARK



MOUNTAIN WEST

JOE COOLEY

jcooley@newmarkmw.com

direct 801.456.8803

[View Profile](#)

ADAM HAWKES

ahawkes@newmarkmw.com

direct 801.416.1034

[View Profile](#)

FULL SERVICE
COMMERCIAL REAL ESTATE

312 East South Temple

Salt Lake City, Utah 84111

Office 801.456.8800

www.newmarkmw.com

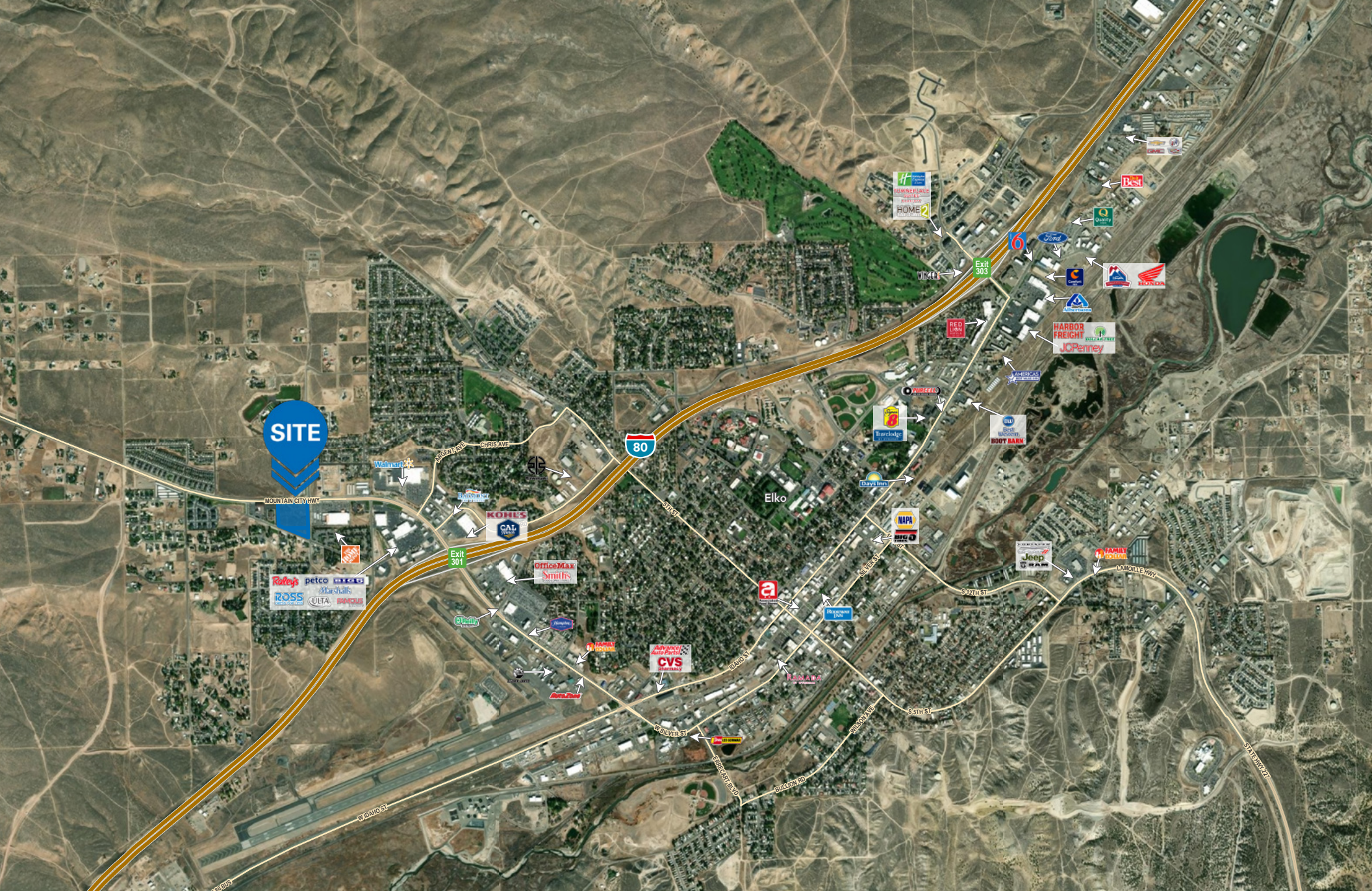
CONCEPTUAL SITE PLAN



MOUNTAIN WEST

[View Profile](#)[View Profile](#)

www.newmarkmw.com



JOE COOLEY
jcooley@newmarkmw.com
direct 801.456.8803
[View Profile](#)

ADAM HAWKES
ahawkes@newmarkmw.com
direct 801.416.1034
[View Profile](#)

**FULL SERVICE
COMMERCIAL REAL ESTATE**
312 East South Temple
Salt Lake City, Utah 84111
Office 801.456.8800
www.newmarkmw.com