

1754 Technology Drive #128

San Jose, California



For Lease

Property Highlights:

- Suite 128 - ±1,270 square feet
- Fully furnished (negotiable)
- Spacious interiors with private entrance
- Professionally managed office park
- Ample natural light with two sides of glass
- Retail/restaurants in walking distance
- Immediate access to 101 / 880 / 87
- Adjacent to Light Rail and Airport
- 4.5/1,000 parking ratio

For more information, please contact:

Scott Zhang

510-284-9042

scott.zhang@gmail.com

LIC #01990104

Green Valley Realty, 19620 Stevens Creek Blvd, Cupertino, CA 95014



- Building size: ±56,000 square feet
- Suite area: 2.57 acres / Zoned A (PD)
- Two-story garden style office complex
- Common building conference room
- On-site management, maintenance, and day porter
- Excellent access to Interstate 101, 280, 880 and Hwy. 87
- Walking distance to light rail, lodging, and health club

For more information, please contact:

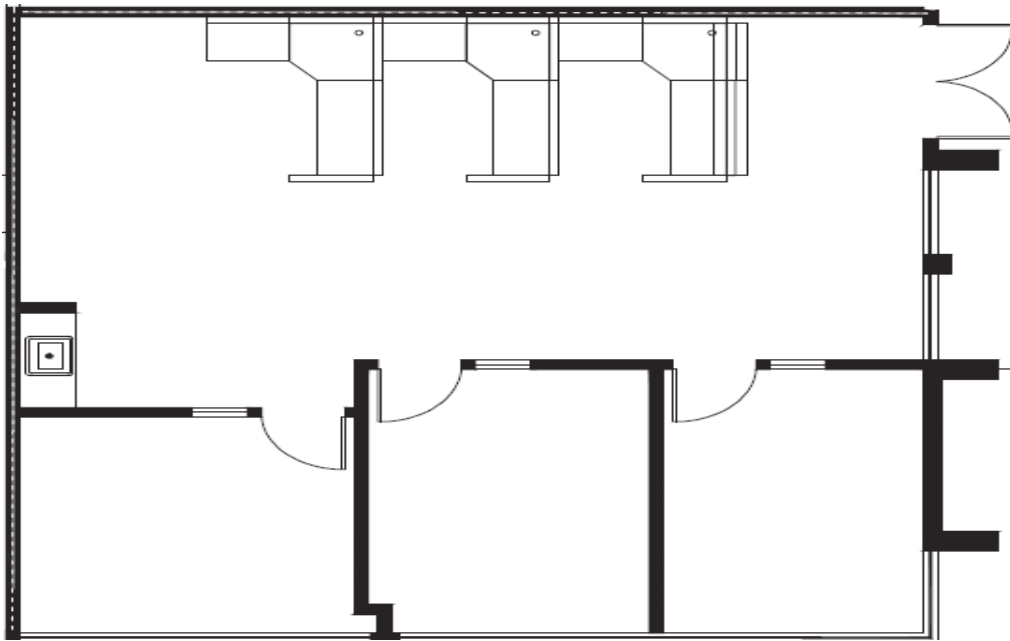
Scott Zhang

510-284-9042

scott.zhang@gmail.com

LIC #01990104

Green Valley Realty, 19620 Stevens Creek Blvd, Cupertino, CA 95014



FIRST FLOOR



For more information, please contact:

Scott Zhang

510-284-9042

scott.zhang@gmail.com

LIC #01990104

Green Valley Realty, 19620 Stevens Creek Blvd, Cupertino, CA 95014



For more information, please contact:

Scott Zhang

510-284-9042

scott.zhang@gmail.com

LIC #01990104

Green Valley Realty, 19620 Stevens Creek Blvd, Cupertino, CA 95014