



Renovated Industrial Facility

87 Carpenter Drive

Annville, Kentucky 40402

Property Highlights

- Newly renovated industrial facility located in the Jackson County Regional Industrial Park
- Features include a 5-ton crane, POW-R-Way III Busway fusible switch, air compressors and fiber optic cabling
- +/-7,638 SF warehouse and +/-2,497 SF office
- 16-18' ceilings throughout the warehouse
- 1 drive-in door (12' height)
- 3-Phase electric, 2400 volts/1200 amps
- Located just +/-20 minutes to London and Booneville and +/-25 minutes to I-75

Offering Summary

Sale Price:	\$1,200,000
Building Size:	10,135 SF
Lot Size:	1.8 Acres

VIDEO

For More Information



Max Darby

Associate

O: 859 224 2000

mdarby@naiisaac.com

For Sale

10,135 SF | \$1,200,000

Renovated Industrial Facility



NO WARRANTY OR REPRESENTATION, EXPRESS OR IMPLIED, IS MADE AS TO THE ACCURACY OF THE INFORMATION CONTAINED HEREIN, AND THE SAME IS SUBMITTED SUBJECT TO ERRORS, OMISSIONS, CHANGE OF PRICE, RENTAL OR OTHER CONDITIONS, PRIOR SALE, LEASE OR FINANCING, OR WITHDRAWAL WITHOUT NOTICE, AND OF ANY SPECIAL LISTING CONDITIONS IMPOSED BY OUR PRINCIPALS NO WARRANTIES OR REPRESENTATIONS ARE MADE AS TO THE CONDITION OF THE PROPERTY OR ANY HAZARDS CONTAINED THEREIN ARE ANY TO BE IMPLIED.

771 Corporate Drive, Suite 500
Lexington, KY 40503
859 224 2000 tel
naiisaac.com



Commercial Real Estate Services, Worldwide.

For Sale

10,135 SF | \$1,200,000

Renovated Industrial Facility



NO WARRANTY OR REPRESENTATION, EXPRESS OR IMPLIED, IS MADE AS TO THE ACCURACY OF THE INFORMATION CONTAINED HEREIN, AND THE SAME IS SUBMITTED SUBJECT TO ERRORS, OMISSIONS, CHANGE OF PRICE, RENTAL OR OTHER CONDITIONS, PRIOR SALE, LEASE OR FINANCING, OR WITHDRAWAL WITHOUT NOTICE, AND OF ANY SPECIAL LISTING CONDITIONS IMPOSED BY OUR PRINCIPALS NO WARRANTIES OR REPRESENTATIONS ARE MADE AS TO THE CONDITION OF THE PROPERTY OR ANY HAZARDS CONTAINED THEREIN ARE ANY TO BE IMPLIED.

771 Corporate Drive, Suite 500
Lexington, KY 40503
859 224 2000 tel
naiisaac.com



Commercial Real Estate Services, Worldwide.

For Sale

10,135 SF | \$1,200,000

Interior Office



NO WARRANTY OR REPRESENTATION, EXPRESS OR IMPLIED, IS MADE AS TO THE ACCURACY OF THE INFORMATION CONTAINED HEREIN, AND THE SAME IS SUBMITTED SUBJECT TO ERRORS, OMISSIONS, CHANGE OF PRICE, RENTAL OR OTHER CONDITIONS, PRIOR SALE, LEASE OR FINANCING, OR WITHDRAWAL WITHOUT NOTICE, AND OF ANY SPECIAL LISTING CONDITIONS IMPOSED BY OUR PRINCIPALS NO WARRANTIES OR REPRESENTATIONS ARE MADE AS TO THE CONDITION OF THE PROPERTY OR ANY HAZARDS CONTAINED THEREIN ARE ANY TO BE IMPLIED.

771 Corporate Drive, Suite 500
Lexington, KY 40503
859 224 2000 tel
naiisaac.com

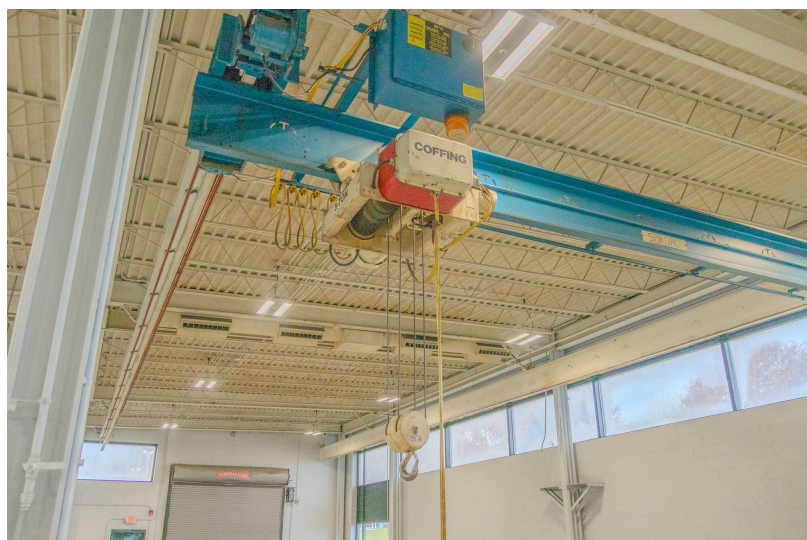
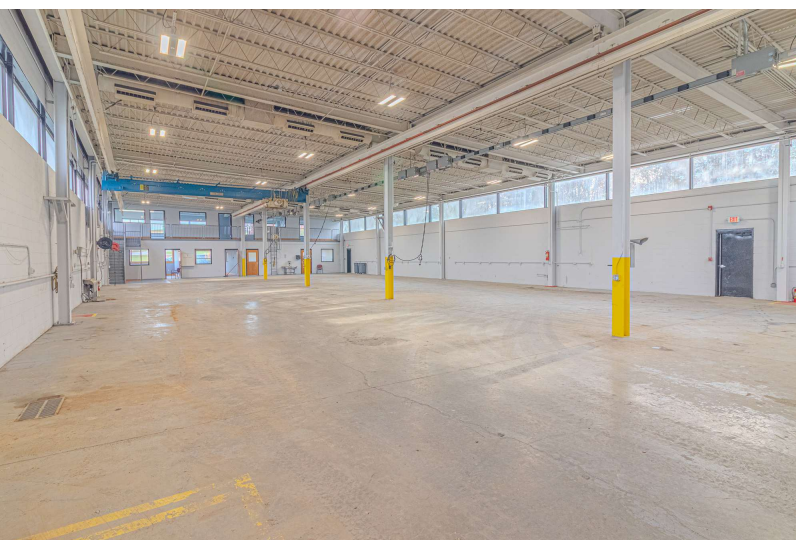
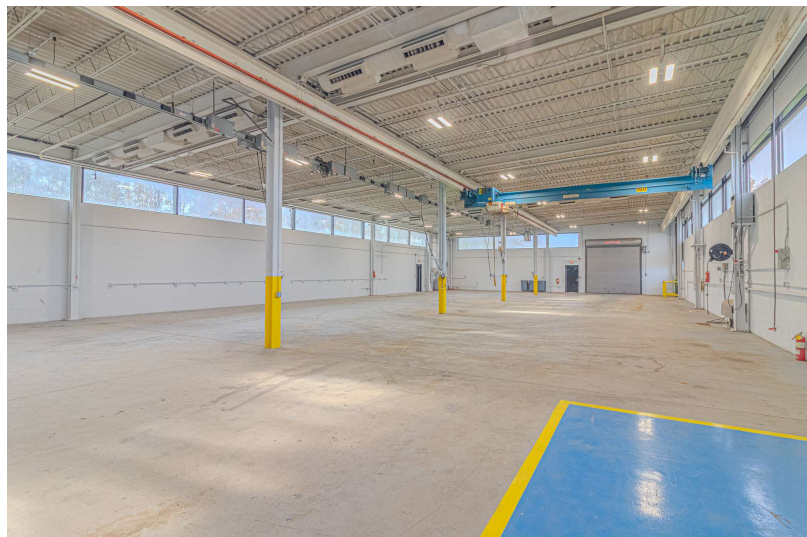


Commercial Real Estate Services, Worldwide.

For Sale

10,135 SF | \$1,200,000

Interior Warehouse



NO WARRANTY OR REPRESENTATION, EXPRESS OR IMPLIED, IS MADE AS TO THE ACCURACY OF THE INFORMATION CONTAINED HEREIN, AND THE SAME IS SUBMITTED SUBJECT TO ERRORS, OMISSIONS, CHANGE OF PRICE, RENTAL OR OTHER CONDITIONS, PRIOR SALE, LEASE OR FINANCING, OR WITHDRAWAL WITHOUT NOTICE, AND OF ANY SPECIAL LISTING CONDITIONS IMPOSED BY OUR PRINCIPALS NO WARRANTIES OR REPRESENTATIONS ARE MADE AS TO THE CONDITION OF THE PROPERTY OR ANY HAZARDS CONTAINED THEREIN ARE ANY TO BE IMPLIED.

771 Corporate Drive, Suite 500
Lexington, KY 40503
859 224 2000 tel
naiisaac.com

Location Information

Building Name	Renovated Industrial Facility
Street Address	87 Carpenter Drive
City, State, Zip	Annville, KY 40402
County	Jackson County

Building Information

Building Size	10,135 SF
Roof	Flat/Composition Rubber
Drive-In Door	One
Year Built/Renovated	2005/2024
Power	3-Phase / 2400 volts

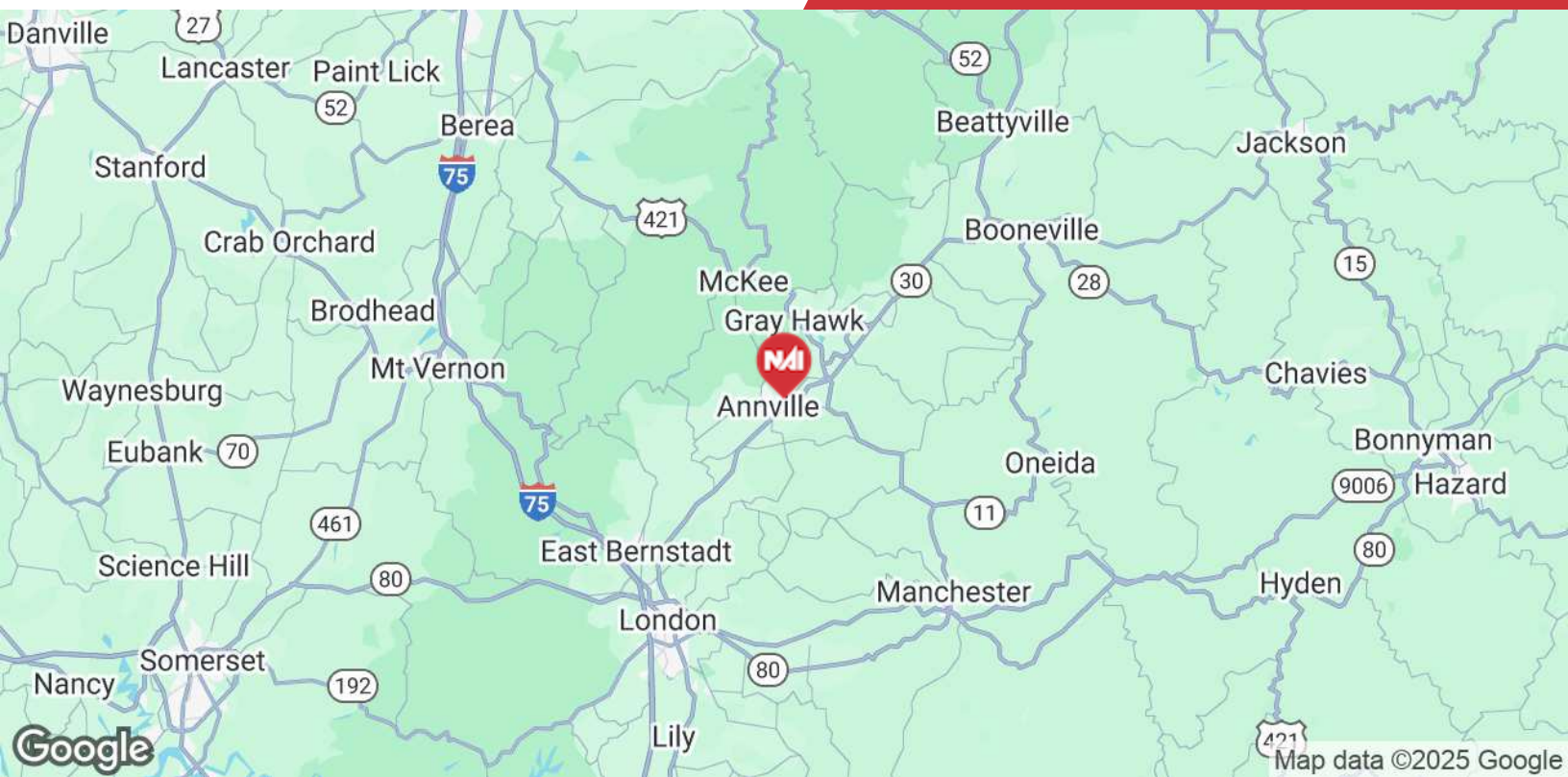
Property Information

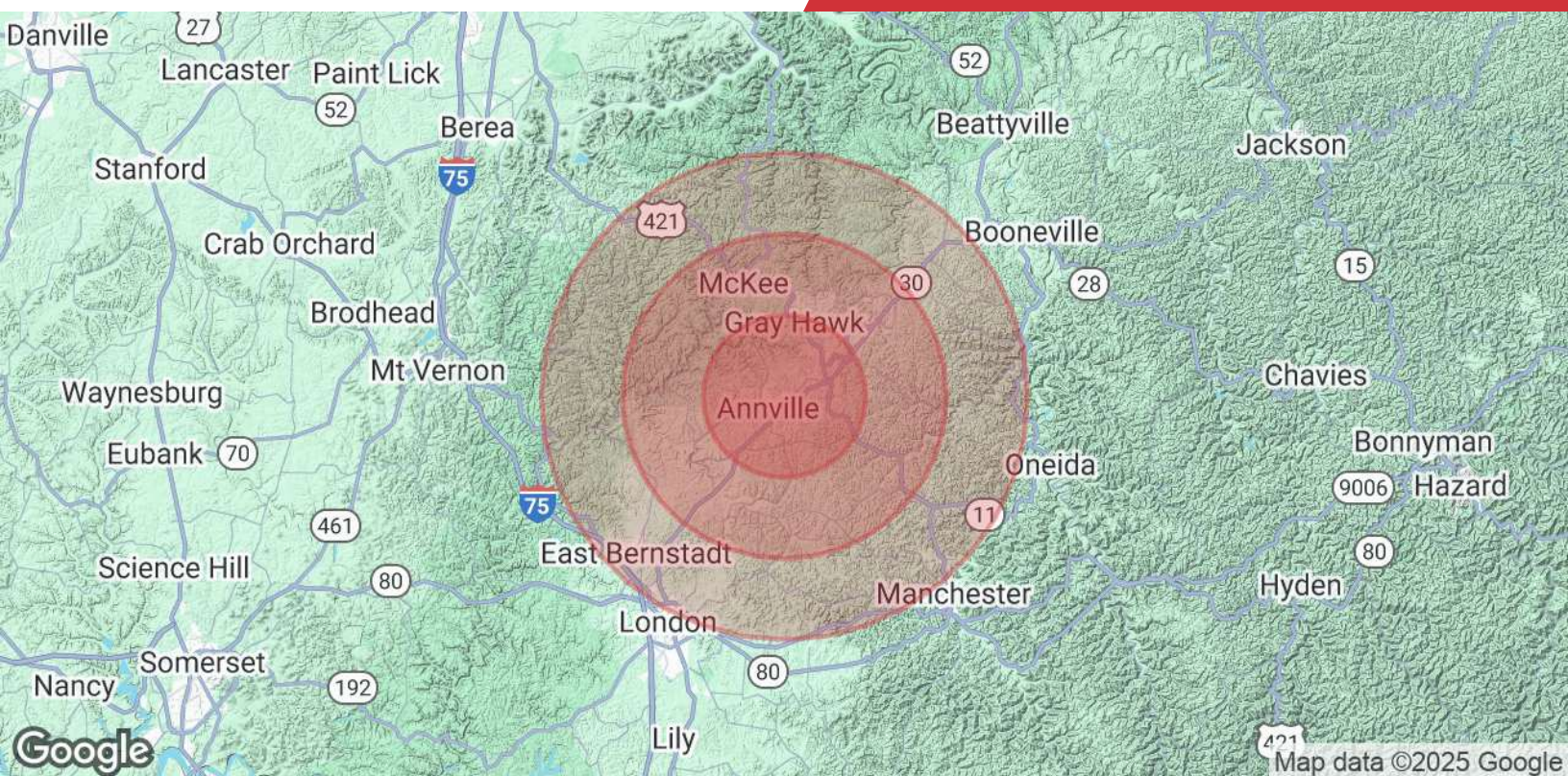
Property Type	Industrial
Property Subtype	Manufacturing
Lot Size	+/-1.8 Acres
APN #	71-26F

Mechanical Information

Crane	5-ton overhead adjustable
Cable	Fiber Optic
Power	Pow-R-Way III Busway Fusible Switch
Air Compressors	Available throughout warehouse







Population

	5 Miles	10 Miles	15 Miles
Total Population	5,415	14,436	35,030
Average Age	41	41	41
Average Age (Male)	40	40	40
Average Age (Female)	42	42	42

Households & Income

	5 Miles	10 Miles	15 Miles
Total Households	2,031	5,629	13,276
# of Persons per HH	2.6	2.6	2.6
Average HH Income	\$61,486	\$59,979	\$59,857
Average House Value	\$109,394	\$130,355	\$145,030

Demographics data derived from 2025 STDB