

BEDFORD SQUARE



GROCERY ANCHORED SHOPPING CENTER

Bedford Square

Located in Bedford, Pa

H. DIRIENZO PROPERTIES LTD

FOR SALE

• BEDFORD •

LOCATION

US RT 30
BEDFORD, PA

DEMOGRAPHICS

Population

10 mile	20,705
15 mile	36,019
20 mile	57,786

Households

10 mile	8,574
15 mile	14,340
20 mile	22,939

Avg. Household Income

10 mile	41,686
15 mile	41,003
20 mile	39,604

CONTACT

Henry David DiRienzo
721 Boardman-Canfield Rd.
Boardman, Ohio 44512

330.729.9044
Fax 330.729.9046



SITE INFORMATION

Bedford Square is located three miles east of the City of Bedford, Pa. in Bedford County. Bedford Square is located on US RT 30 and has traffic signalization. Bedford Square contains 73,600 SF located on approx. 10 acres. There is an undeveloped expansion area located on an additional 3.25 acres. The project is anchored by Weis Supermarkets and Fashion Bug. The project is 100% occupied. The Wal-Mart store is 71,159 sf with an expansion area and is owned by others. There is a McDonalds and one undeveloped outlot. Both outlots are owned by others. Bedford Square is being offered without an asking price.

H. DIRIENZO PROPERTIES LTD.

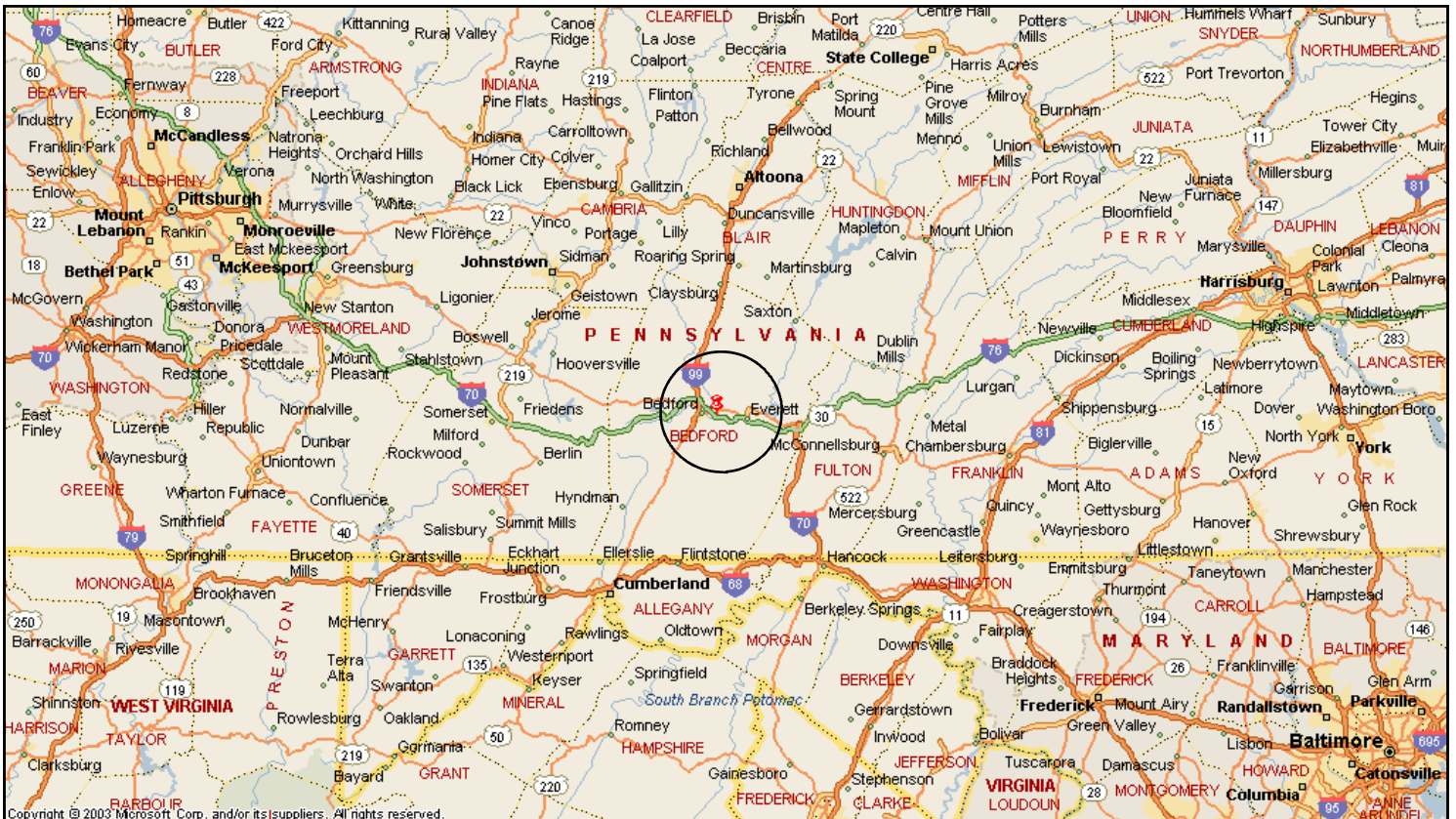
721 BOARDMAN-CANFIELD RD. BOARDMAN, OH 44512



H. DIRIENZO PROPERTIES LTD.

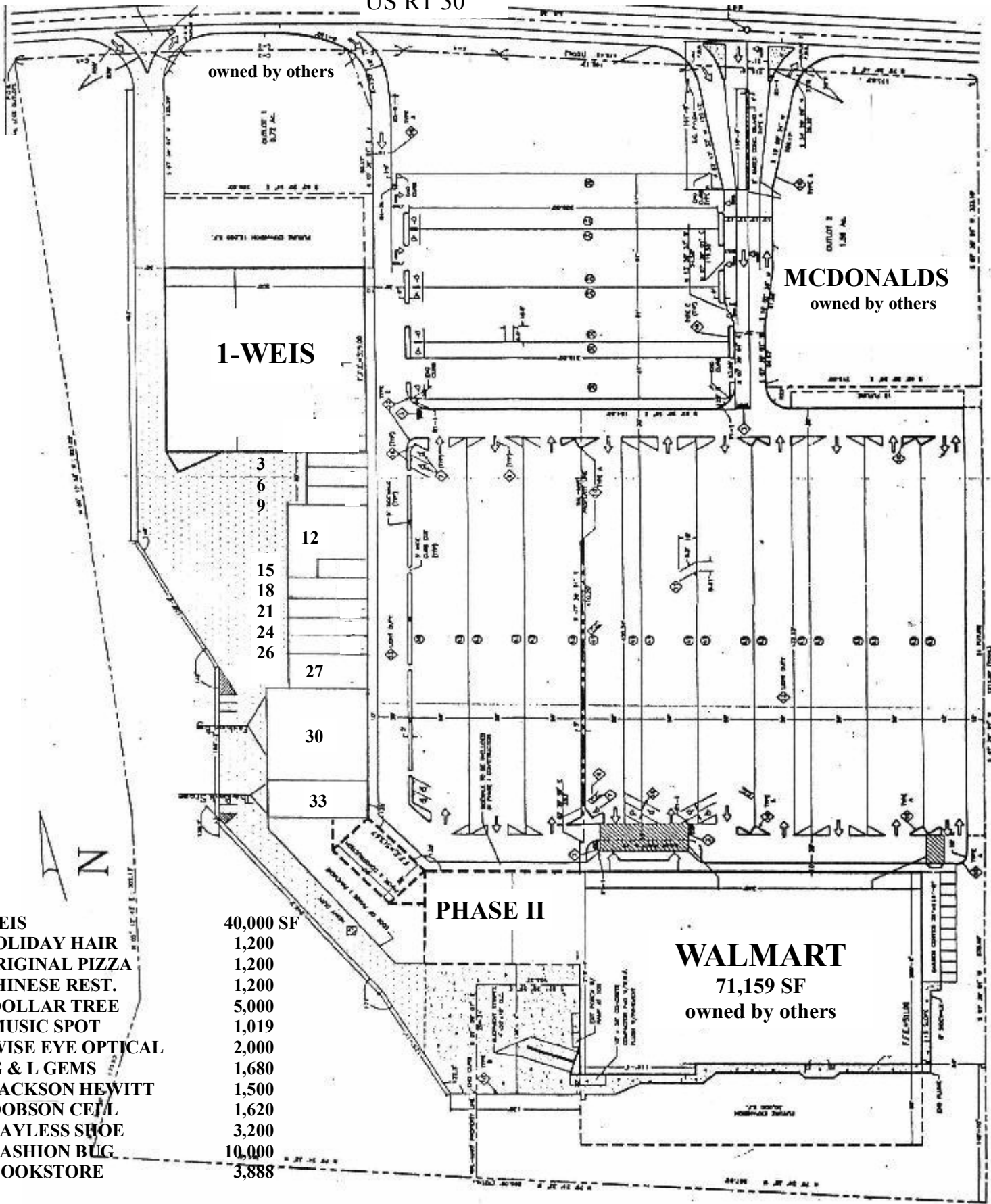


H. DIRIENZO PROPERTIES LTD.



H. DIRIENZO PROPERTIES LTD.

US RT 30



1-WEIS	40,000 SF
3-HOLIDAY HAIR	1,200
6-ORIGINAL PIZZA	1,200
9-CHINESE REST.	1,200
12-DOLLAR TREE	5,000
15-MUSIC SPOT	1,019
18-WISE EYE OPTICAL	2,000
21-G & L GEMS	1,680
24-JACKSON HEWITT	1,500
26-DOBSON CELL	1,620
27-PAYLESS SHOE	3,200
30-FASHION BUG	10,000
33-BOOKSTORE	3,888

PHASE II

WALMART
71,159 SF
owned by others

MCDONALDS
owned by others

owned by others

1-WEIS

BEDFORD, PA

H. DIRIENZO PROPERTIES LTD.