



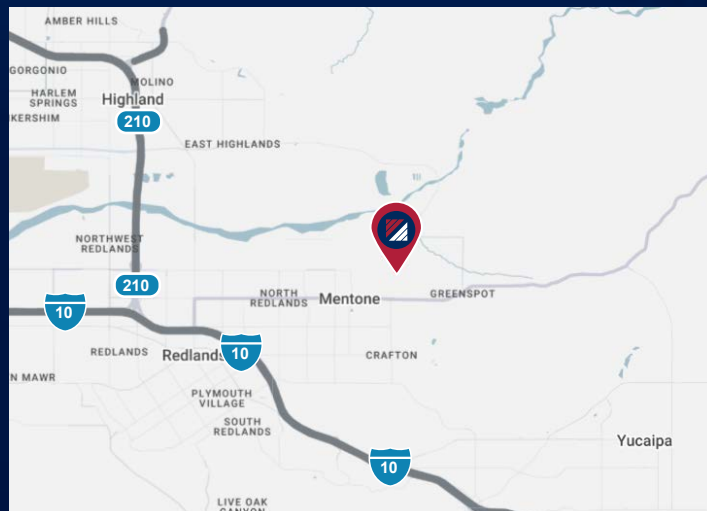
FOR SALE OR LEASE

±35,872 SF OFFICE BUILDINGS

1500 CRAFTON AVE. | BLDGS 125, 126, & 127 | REDLANDS | CA

PROPERTY HIGHLIGHTS

- ±35,872 Total SF Office Buildings
 - Bldg 125: ±18,023 SF
 - Bldg 126: ±10,881 SF
 - Bldg 127: ±6,968 SF
- Flexible Layout
- Ample Parking
- M2 Zoning (Verify)
- Minutes to 10 and 210 Freeways



FOR MORE INFORMATION, PLEASE CONTACT:

CODY WOLF
EXECUTIVE VICE PRESIDENT
M: 909.996.5760
cwolf@daumcommercial.com
CADRE #01997598

MARK SCHAFER
EXECUTIVE VICE PRESIDENT
M: 949.923.9890
mschafer@daumcommercial.com
CADRE #01902664

JACK STONE
ASSOCIATE VICE PRESIDENT
M: 952.454.3262
jstone@daumcommercial.com
CADRE #02070402

Although all information is furnished regarding for sale, rental or financing from sources deemed reliable, such information has not been verified and no express representation is made nor is any to be implied as to the accuracy thereof, and it is submitted subject to errors, omissions, changes of price, rental or other conditions, prior sale, lease or financing, or withdrawal without notice. All Maps provided courtesy of Google Maps, Bing Maps, and Google Earth. D/AQ Corp. # 01129558



FOR SALE OR LEASE

±35,872 SF OFFICE BUILDINGS

PHOTOS

1500 CRAFTON AVE. | BLDGS 125, 126, & 127 | REDLANDS | CA



FOR MORE INFORMATION, PLEASE CONTACT:

CODY WOLF
EXECUTIVE VICE PRESIDENT
M: 909.996.5760
cwolf@daumcommercial.com
CADRE #01997598

MARK SCHAFER
EXECUTIVE VICE PRESIDENT
M: 949.923.9890
mschafer@daumcommercial.com
CADRE #01902664

JACK STONE
ASSOCIATE VICE PRESIDENT
M: 952.454.3262
jstone@daumcommercial.com
CADRE #02070402

Although all information is furnished regarding for sale, rental or financing from sources deemed reliable, such information has not been verified and no express representation is made nor is any to be implied as to the accuracy thereof, and it is submitted subject to errors, omissions, changes of price, rental or other conditions, prior sale, lease or financing, or withdrawal without notice. All Maps provided courtesy of Google Maps, Bing Maps, and Google Earth. D/AQ Corp. # 01129558

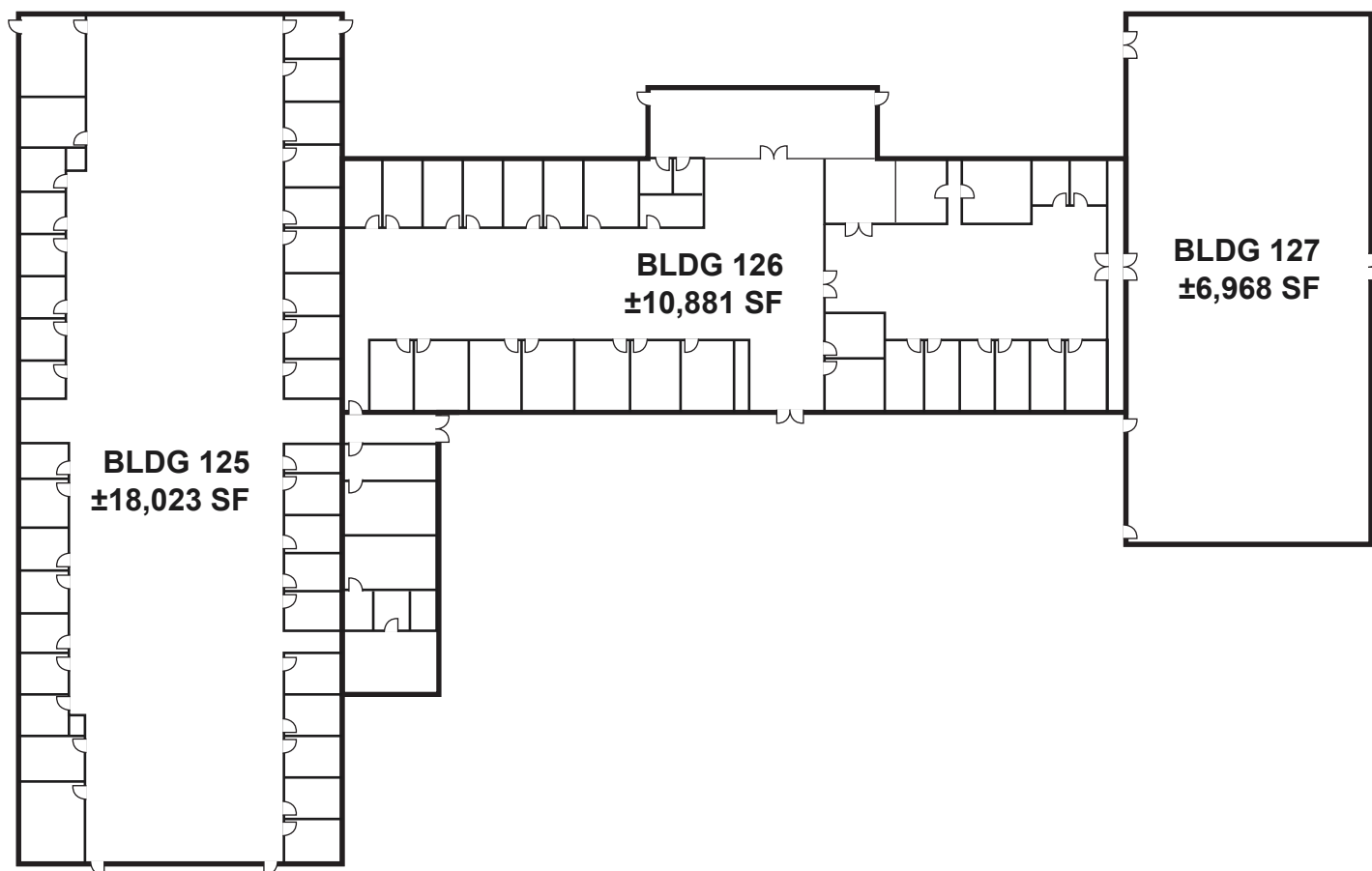
DAUM
COMMERCIAL REAL ESTATE SERVICES

FOR SALE OR LEASE

±35,872 SF OFFICE BUILDINGS

SITE PLAN

1500 CRAFTON AVE. | BLDGS 125, 126, & 127 | REDLANDS | CA



NOT TO SCALE*

FOR MORE INFORMATION, PLEASE CONTACT:

CODY WOLF
EXECUTIVE VICE PRESIDENT
M: 909.996.5760
cwolf@daumcommercial.com
CADRE #01997598

MARK SCHAFER
EXECUTIVE VICE PRESIDENT
M: 949.923.9890
mschafer@daumcommercial.com
CADRE #01902664

JACK STONE
ASSOCIATE VICE PRESIDENT
M: 952.454.3262
jstone@daumcommercial.com
CADRE #02070402

Although all information is furnished regarding for sale, rental or financing from sources deemed reliable, such information has not been verified and no express representation is made nor is any to be implied as to the accuracy thereof, and it is submitted subject to errors, omissions, changes of price, rental or other conditions, prior sale, lease or financing, or withdrawal without notice. All Maps provided courtesy of Google Maps, Bing Maps, and Google Earth. D/AQ Corp. # 01129558

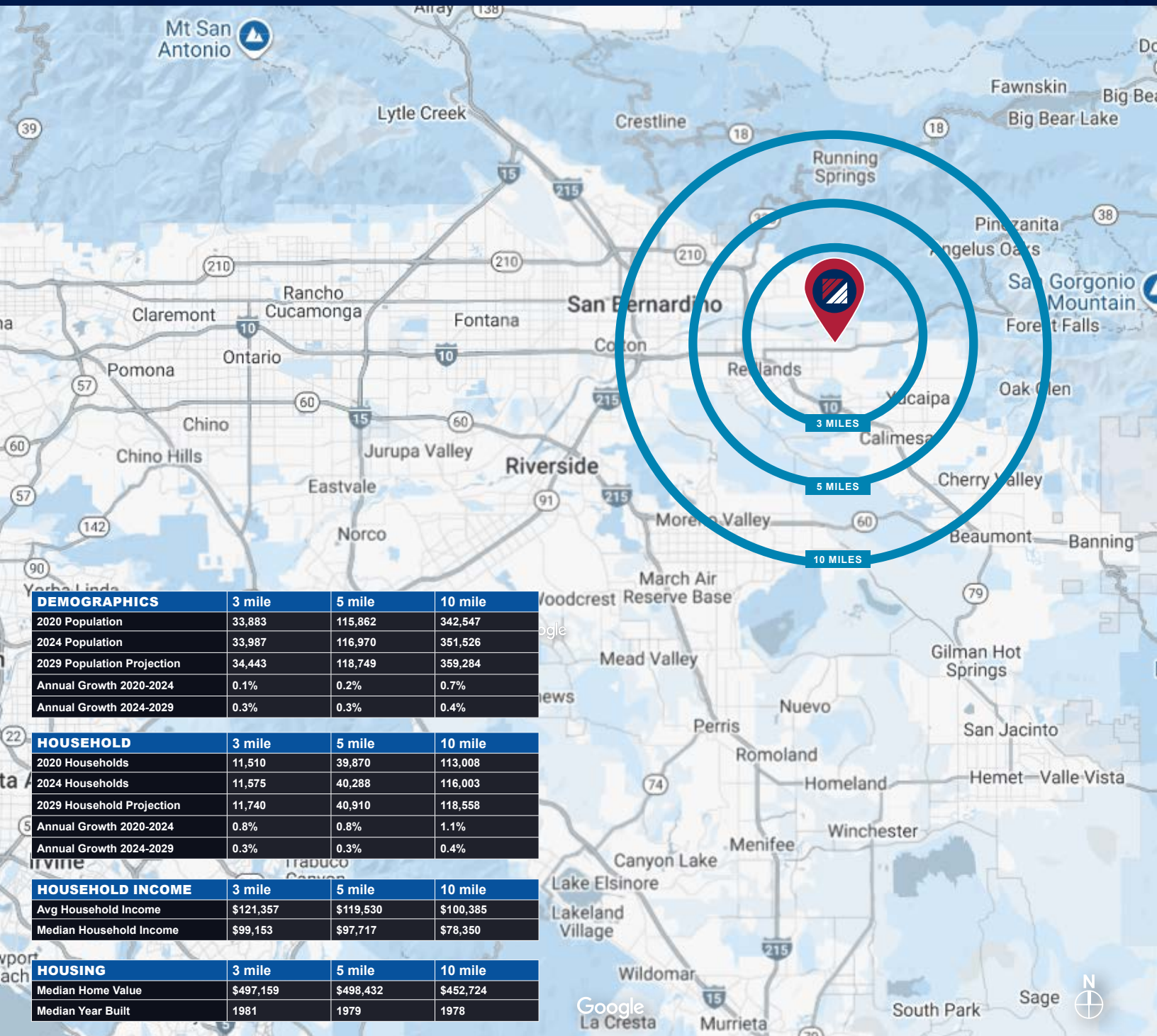
DAUM
COMMERCIAL REAL ESTATE SERVICES

FOR SALE OR LEASE

±35,872 SF OFFICE BUILDINGS

LOCATION MAP & DEMOGRAPHICS

1500 CRAFTON AVE. | BLDGS 125, 126, & 127 | REDLANDS | CA



DEMOGRAPHICS	3 mile	5 mile	10 mile
2020 Population	33,883	115,862	342,547
2024 Population	33,987	116,970	351,526
2029 Population Projection	34,443	118,749	359,284
Annual Growth 2020-2024	0.1%	0.2%	0.7%
Annual Growth 2024-2029	0.3%	0.3%	0.4%

HOUSEHOLD	3 mile	5 mile	10 mile
2020 Households	11,510	39,870	113,008
2024 Households	11,575	40,288	116,003
2029 Household Projection	11,740	40,910	118,558
Annual Growth 2020-2024	0.8%	0.8%	1.1%
Annual Growth 2024-2029	0.3%	0.3%	0.4%

HOUSEHOLD INCOME	3 mile	5 mile	10 mile
Avg Household Income	\$121,357	\$119,530	\$100,385
Median Household Income	\$99,153	\$97,717	\$78,350

HOUSING	3 mile	5 mile	10 mile
Median Home Value	\$497,159	\$498,432	\$452,724
Median Year Built	1981	1979	1978

FOR MORE INFORMATION, PLEASE CONTACT:

CODY WOLF
EXECUTIVE VICE PRESIDENT
M: 909.996.5760
cwolf@daumcommercial.com
CADRE #01997598

MARK SCHAFER
EXECUTIVE VICE PRESIDENT
M: 949.923.9890
mschafer@daumcommercial.com
CADRE #01902664

JACK STONE
ASSOCIATE VICE PRESIDENT
M: 952.454.3262
jstone@daumcommercial.com
CADRE #02070402

Although all information is furnished regarding sale, rental or financing from sources deemed reliable, such information has not been verified and no express representation is made nor is any to be implied as to the accuracy thereof, and it is submitted subject to errors, omissions, changes of price, rental or other conditions, prior sale, lease or financing, or withdrawal without notice. All Maps provided courtesy of Google Maps, Bing Maps, and Google Earth. D/AQ Corp. # 01129558

