

Freestanding Building with Drive Thru

3164 Leechburg Road
Lower Burrell, PA 15068

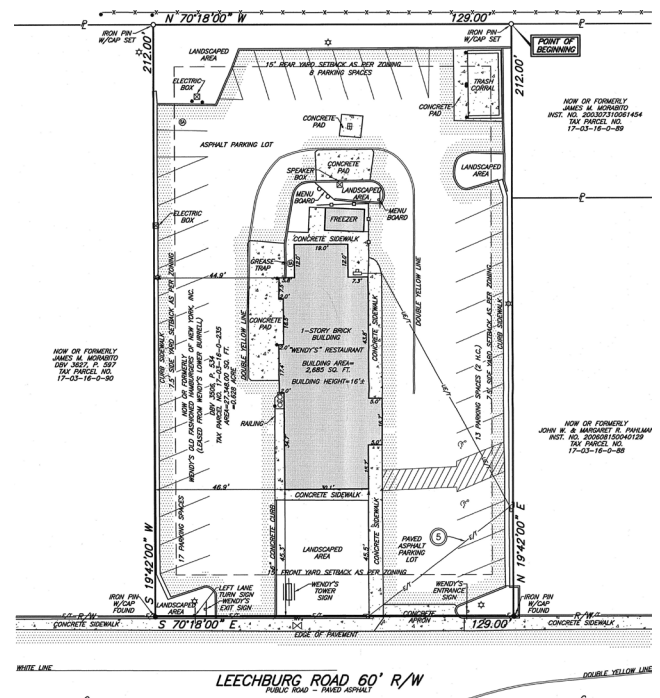
PRICE REDUCTION



2024 Demographics	One Mile	Three Miles	Five Miles
Population	5,095	40,068	58,889
Daytime Population	4,515	34,834	53,361
Households	2,429	18,280	26,802
Average Household Income	\$98,824	\$79,237	\$82,584

Property Info

- + 2,685 sq. ft. former quick service restaurant with drive thru on 0.64 acres
- + Full access from Leechburg Road
- + Zoned C-2 (Community Business District), many permitted uses including financial institutions, retail stores, auto sales and service, catering establishment, animal hospital, beverage distributors, clinics, dental offices, medical offices and restaurants
- + Near the intersection of Leechburg Road (10,213 ADT) and Wildlife Lodge Road (4,984 ADT)
- + Area businesses include Community Market, Rose's, Rite Aid, Dunkin, Citizens Bank, Dollar Tree, Dollar General and NTB





Contact Us

Steven M. Esposito

First Vice President

+1 412 716 4865

steven.esposito@cbre.com

© 2024 CBRE, Inc. All rights reserved. This information has been obtained from sources believed reliable but has not been verified for accuracy or completeness. CBRE, Inc. makes no guarantee, representation or warranty and accepts no responsibility or liability as to the accuracy, completeness, or reliability of the information contained herein. You should conduct a careful, independent investigation of the property and verify all information. Any reliance on this information is solely at your own risk. CBRE and the CBRE logo are service marks of CBRE, Inc. All other marks displayed on this document are the property of their respective owners, and the use of such marks does not imply any affiliation with or endorsement of CBRE. Photos herein are the property of their respective owners. Use of these images without the express written consent of the owner is prohibited.