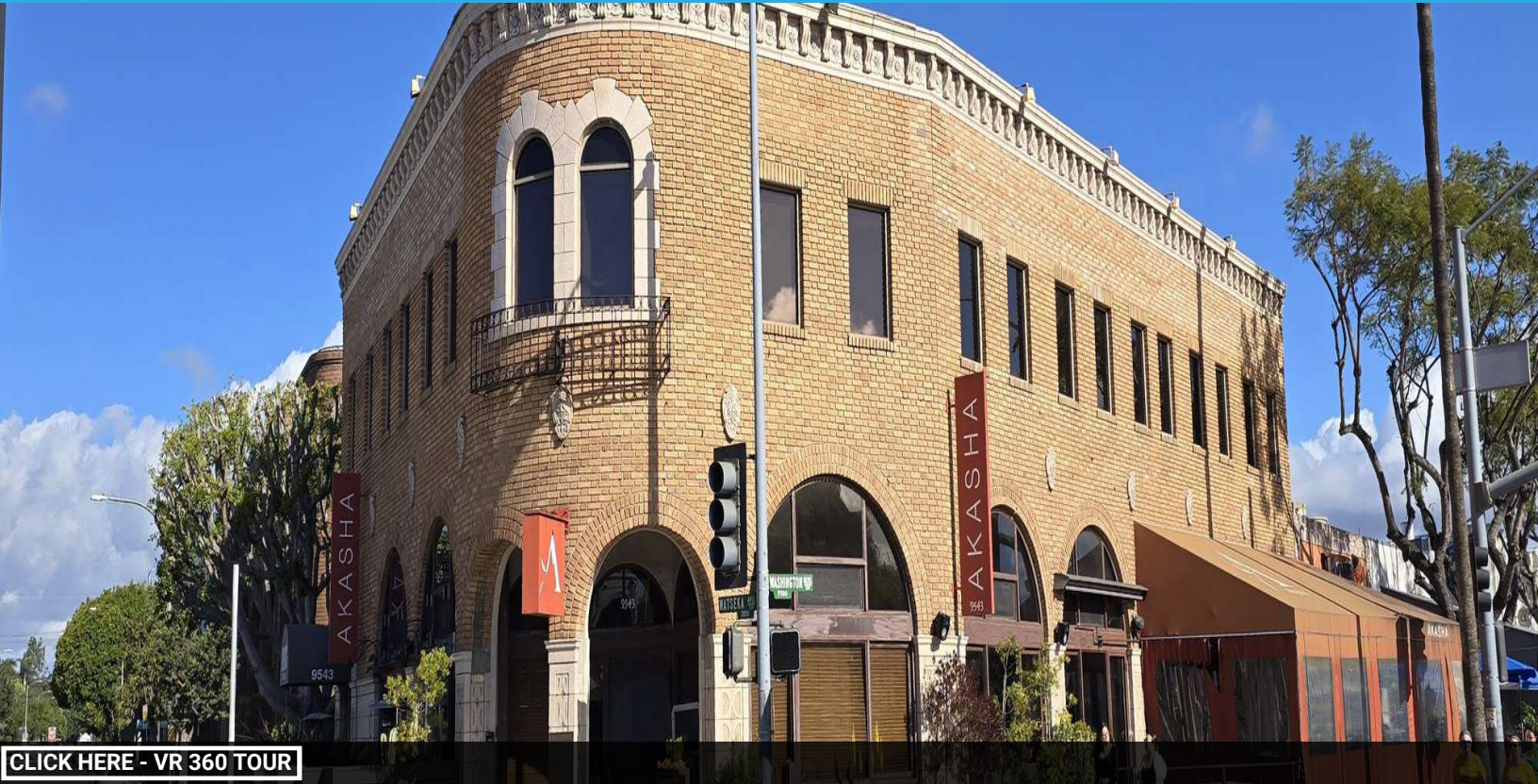


FOR LEASE

9543 Culver Blvd #200 Culver City, CA 90232

NAICapital
COMMERCIAL REAL ESTATE SERVICES, WORLDWIDE



Offering Summary

Lease Rate:	\$4.75 PSF (MG)
Available SF:	5,500 SF
Building Size:	10,822 SF
Property Type:	Office (Creative/Loft)
Parking Ratio:	4/1000 SF
# of Parking Spaces:	22

Property Overview

Beautiful 2nd floor office space at the heart of Downtown Culver City. Great mix of private offices, conference and team work spaces, kitchen, reception area, restrooms and support areas. Bright creative office space with skylights and windows, wood floors through common areas. Adjacent parking available (unreserved monthly & guest spaces), surrounded by dining, shopping, coffee, entertainment and service amenities.

Property Highlights

- ±5,500 RSF
- Turnkey office space
- Balance of private offices and shared spaces
- Excellent neighborhood amenities

Demographics

	0.3 Miles	0.5 Miles	1 Mile
Total Households	1,977	6,530	19,328
Total Population	3,641	12,238	39,769
Average HH Income	\$139,254	\$142,477	\$143,240

Kevin Lachoff

310.720.1670

klachoff@naicapital.com

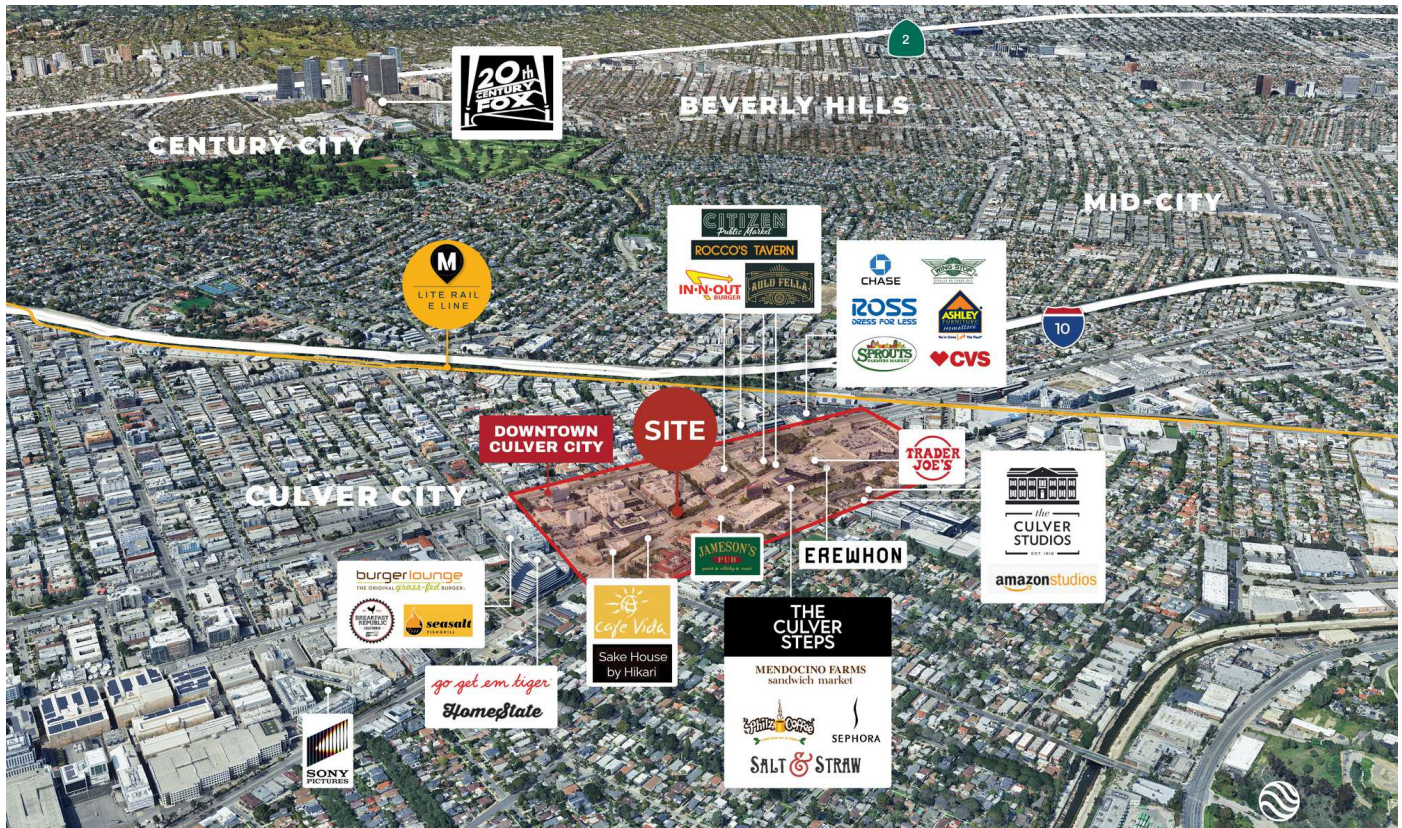
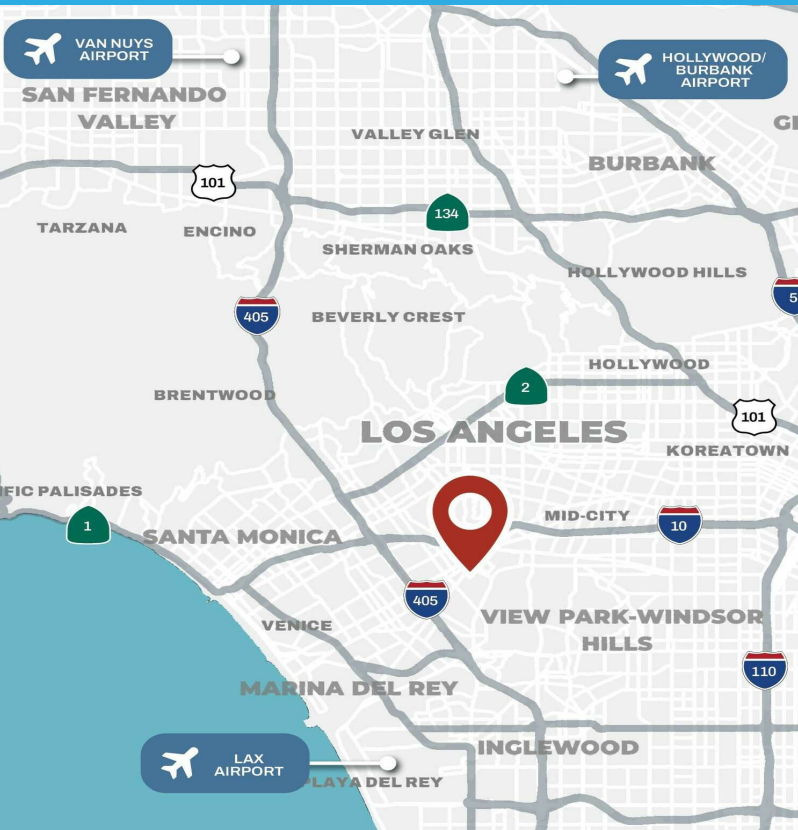
CA DRE #01481846

No warranty, express or implied, is made as to the accuracy of the information contained herein. This information is submitted subject to errors, omissions, change of price, rental or other conditions, withdrawal without notice, and is subject to any special listing conditions imposed by our principals. Cooperating brokers, buyers, tenants and other parties who receive this document should not rely on it, but should use it as a starting point of analysis, and should independently confirm the accuracy of the information contained herein through a due diligence review of the books, records, files and documents that constitute reliable sources of the information described herein. Logos are for identification purposes only and may be trademarks of their respective companies. NAI Capital Commercial, Inc. CAL DRE Lic. #02130474

9543 Culver Blvd #200

Culver City, CA 90232

NAI Capital
COMMERCIAL REAL ESTATE SERVICES, WORLDWIDE



Kevin Lachoff

310.720.1670

klachoff@naicapital.com

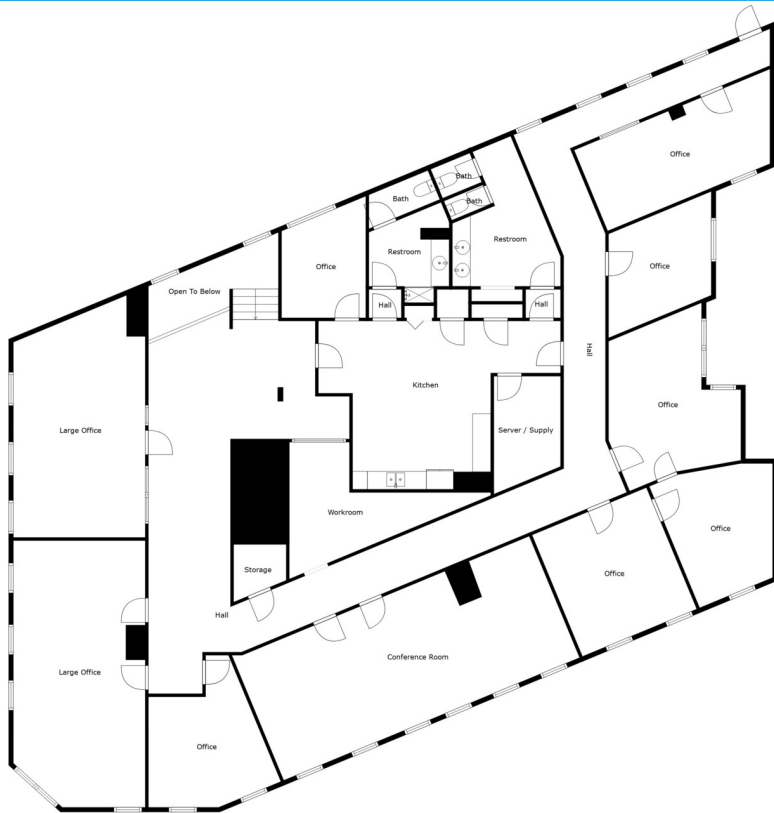
CA DRE #01481846

No warranty, express or implied, is made as to the accuracy of the information contained herein. This information is submitted subject to errors, omissions, change of price, rental or other conditions, withdrawal without notice, and is subject to any special listing conditions imposed by our principals. Cooperating brokers, buyers, tenants and other parties who receive this document should not rely on it, but should use it as a starting point of analysis, and should independently confirm the accuracy of the information contained herein through a due diligence review of the books, records, files and documents that constitute reliable sources of the information described herein. Logos are for identification purposes only and may be trademarks of their respective companies. NAI Capital Commercial, Inc. CAL DRE Lic. #02130474

9543 Culver Blvd #200

Culver City, CA 90232

NAI Capital
COMMERCIAL REAL ESTATE SERVICES, WORLDWIDE



Kevin Lachoff

310.720.1670

klachoff@naicapital.com

CA DRE #01481846

No warranty, express or implied, is made as to the accuracy of the information contained herein. This information is submitted subject to errors, omissions, change of price, rental or other conditions, withdrawal without notice, and is subject to any special listing conditions imposed by our principals. Cooperating brokers, buyers, tenants and other parties who receive this document should not rely on it, but should use it as a starting point of analysis, and should independently confirm the accuracy of the information contained herein through a due diligence review of the books, records, files and documents that constitute reliable sources of the information described herein. Logos are for identification purposes only and may be trademarks of their respective companies. NAI Capital Commercial, Inc. CAL DRE Lic. #02130474