

PUBLIX OUTPARCEL FOR SALE

Highway 70 ♦ Calera, AL ♦ 35040 ♦ Shelby County



SITE SIZE: 5.4 acres / ASKING PRICE: \$ 799,000 / May Divide

Mark Dinan, MBA, CCIM

(c) 205-980-3434

(c) 205-243-3434

markdinan@bellsouth.net

MARK DINAN
Commercial & Investment Real Estate



*All Information furnished regarding property sale, rental, or financing is from sources deemed reliable, but is not guaranteed.

PROPERTY DETAILS

Highway 70 ♦ Calera, AL ♦ 35040 ♦ Shelby County

- ◆ Location, location, location.
- ◆ One of the best lots left in Calera.
- ◆ 5.4 acre lot. 600' Road Frontage on Hwy 70.
- ◆ Full Traffic Signal in front of lot.
- ◆ Excellent exposure to Highway 31 and 70.
- ◆ All utilities available.
- ◆ Graded site is immediately available.
- ◆ Outparcel to thriving Publix Supermarket.
- ◆ Nearby businesses include Publix, Wal-Mart, Chic-fil-a, Zaxby's, BK, Quality Inn, Hampton Inn, Taco Bell, Captain D's, McDonald's, Sysco.
- ◆ .5 miles to I-65 exit 231.
- ◆ Asking Price: \$799,000.



Mark Dinan, MBA, CCIM

(o) 205-980-3434

(c) 205-243-3434

markdinan@bellsouth.net

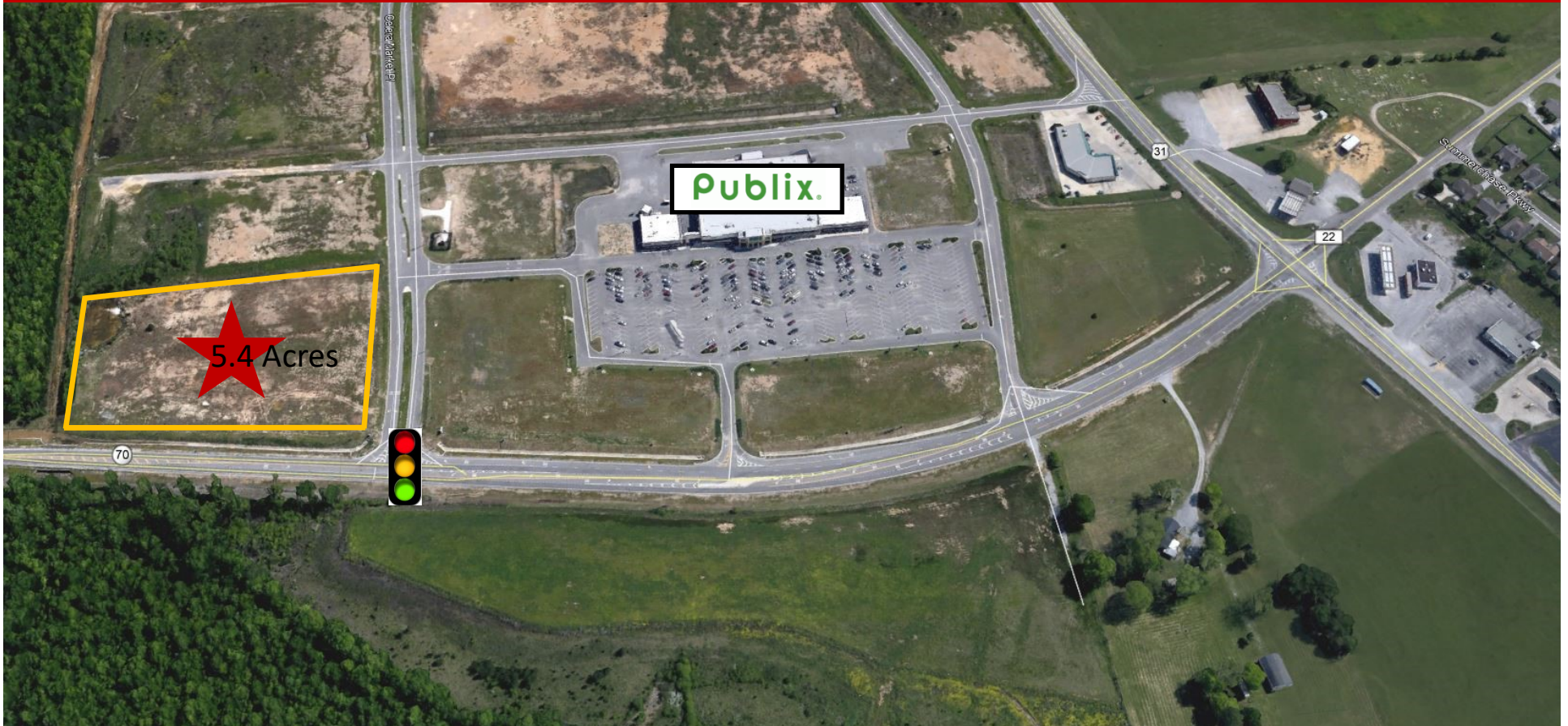
MARK DINAN
Commercial & Investment Real Estate



*All Information furnished regarding property sale, rental, or financing is from sources deemed reliable, but is not guaranteed.

BIRDS EYE VIEW

Highway 70 ♦ Calera, AL ♦ 35040 ♦ Shelby County



Mark Dinan, MBA, CCIM

(c) 205-980-3434

(c) 205-243-3434

markdinan@bellsouth.net

MARK DINAN
Commercial & Investment Real Estate



*All Information furnished regarding property sale, rental, or financing is from sources deemed reliable, but is not guaranteed.

PLAT MAP AERIAL

Highway 70 ♦ Calera, AL ♦ 35040 ♦ Shelby County



Mark Dinan, MBA, CCIM

(c) 205-980-3434

(c) 205-243-3434

markdinan@bellsouth.net

MARK DINAN
Commercial & Investment Real Estate



*All Information furnished regarding property sale, rental, or financing is from sources deemed reliable, but is not guaranteed.

STREET VIEWS

Highway 70 ♦ Calera, AL ♦ 35040 ♦ Shelby County



Mark Dinan, MBA, CCIM

(o) 205-980-3434

(c) 205-243-3434

markdinan@bellsouth.net

MARK DINAN
Commercial & Investment Real Estate



*All Information furnished regarding property sale, rental, or financing is from sources deemed reliable, but is not guaranteed.

STREET VIEWS

Highway 70 ♦ Calera, AL ♦ 35040 ♦ Shelby County



Mark Dinan, MBA, CCIM

(c) 205-980-3434

(c) 205-243-3434

markdinan@bellsouth.net

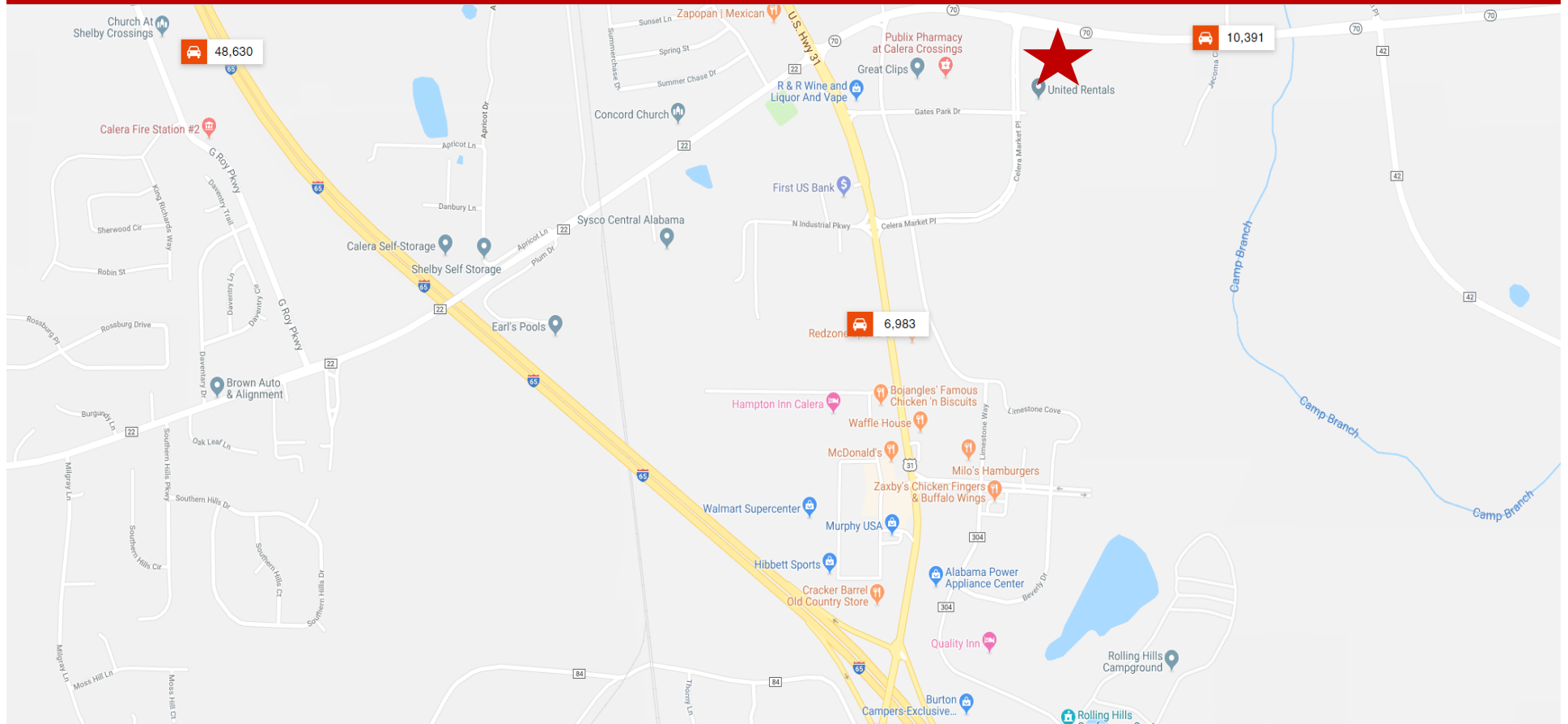
MARK DINAN
Commercial & Investment Real Estate



*All Information furnished regarding property sale, rental, or financing is from sources deemed reliable, but is not guaranteed.

TRAFFIC COUNTS

Highway 70 ♦ Calera, AL ♦ 35040 ♦ Shelby County



Mark Dinan, MBA, CCIM

(c) 205-980-3434

(c) 205-243-3434

markdinan@bellsouth.net

MARK DINAN
Commercial & Investment Real Estate

MEMBER: LoopNet CoStar™

CCIM Experts in Commercial Investment Real Estate

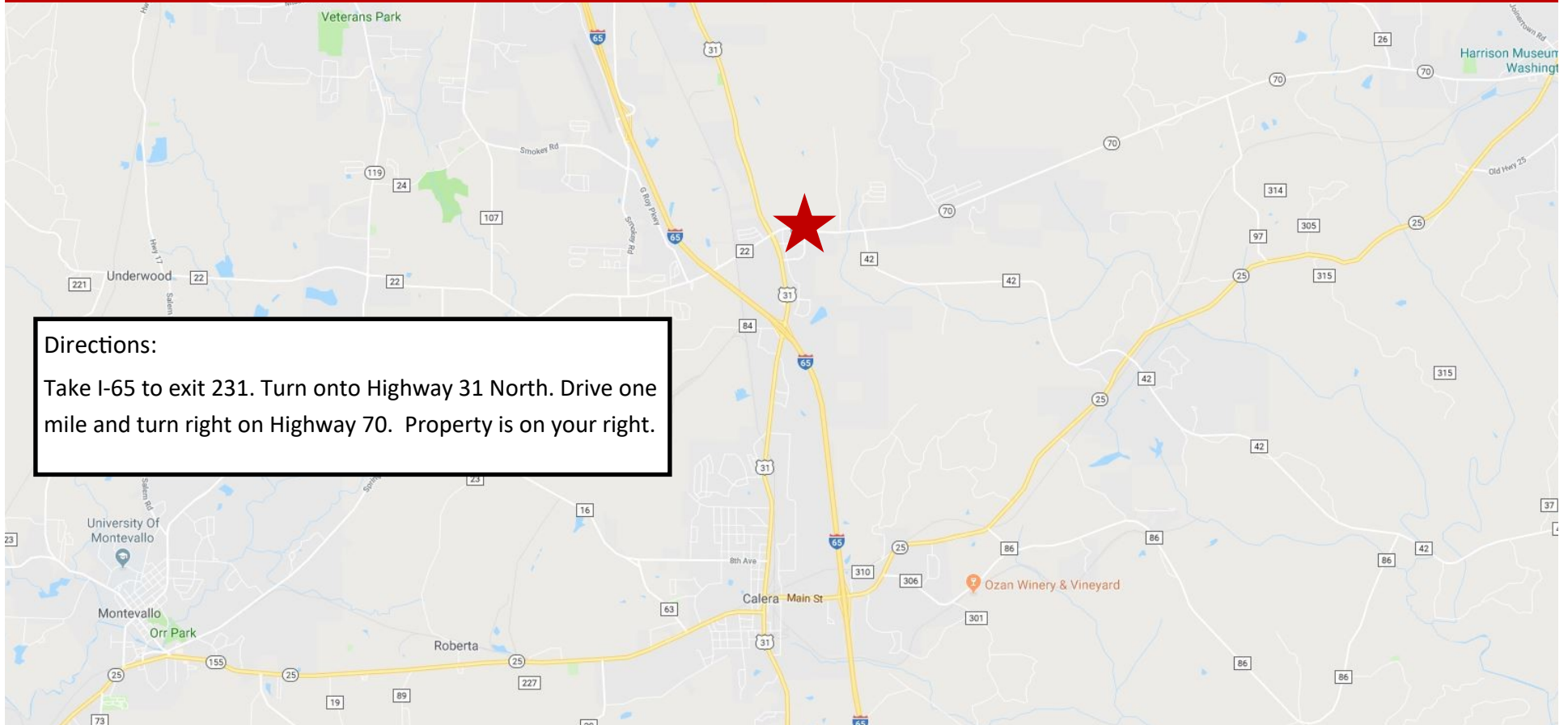
International Council of Shopping Centers

CREXi

*All Information furnished regarding property sale, rental, or financing is from sources deemed reliable, but is not guaranteed.

LOCATION MAP

Highway 70 ♦ Calera, AL ♦ 35040 ♦ Shelby County



Directions:

Take I-65 to exit 231. Turn onto Highway 31 North. Drive one mile and turn right on Highway 70. Property is on your right.

Mark Dinan, MBA, CCIM

(c) 205-980-3434

(c) 205-243-3434

markdinan@bellsouth.net

MARK DINAN
Commercial & Investment Real Estate



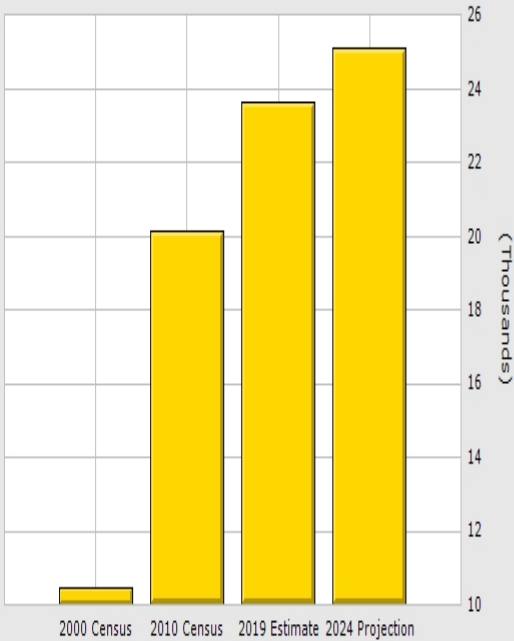
*All Information furnished regarding property sale, rental, or financing is from sources deemed reliable, but is not guaranteed.

DEMOGRAPHICS

Highway 70 ♦ Calera, AL ♦ 35040 ♦ Shelby County

graph: Population 5 Mile prev | next big graph

radius quick stats



	3 Mile	5 Mile	10 Mile
Population			
2019 Total Population:	10,524	23,654	90,508
2024 Population:	11,170	25,089	95,118
Pop Growth 2019-2024:	6.14%	6.07%	5.09%
Average Age:	35.70	36.30	37.20
Households			
2019 Total Households:	4,018	8,986	33,078
HH Growth 2019-2024:	5.95%	5.90%	5.06%
Median Household Inc:	\$67,714	\$67,971	\$66,573
Avg Household Size:	2.60	2.60	2.70
2019 Avg HH Vehicles:	2.00	2.00	2.00
Housing			
Median Home Value:	\$154,293	\$158,407	\$164,458
Median Year Built:	2002	2001	1994

Mark Dinan, MBA, CCIM

(c) 205-980-3434

(c) 205-243-3434

markdinan@bellsouth.net



*All Information furnished regarding property sale, rental, or financing is from sources deemed reliable, but is not guaranteed.