

14152 GRATIOT AVENUE
DETROIT, MICHIGAN



**SIGNATURE
ASSOCIATES**
KNOW SIGNATURE | KNOW RESULTS

RETAIL FOR SALE
1,881 Square Feet Available



PROPERTY FEATURES

- 1,881 square feet available
- Zoned B4
- High traffic counts
- 220 volts and 3-phase power
- Sale Price: \$85,000 (\$45.19/sq. ft.)



For more information, please contact:

JOE STACK
(248) 359 0615
jstack@signatureassociates.com

BRUCE BAJA
(248) 799 3177
bbaja@signatureassociates.com

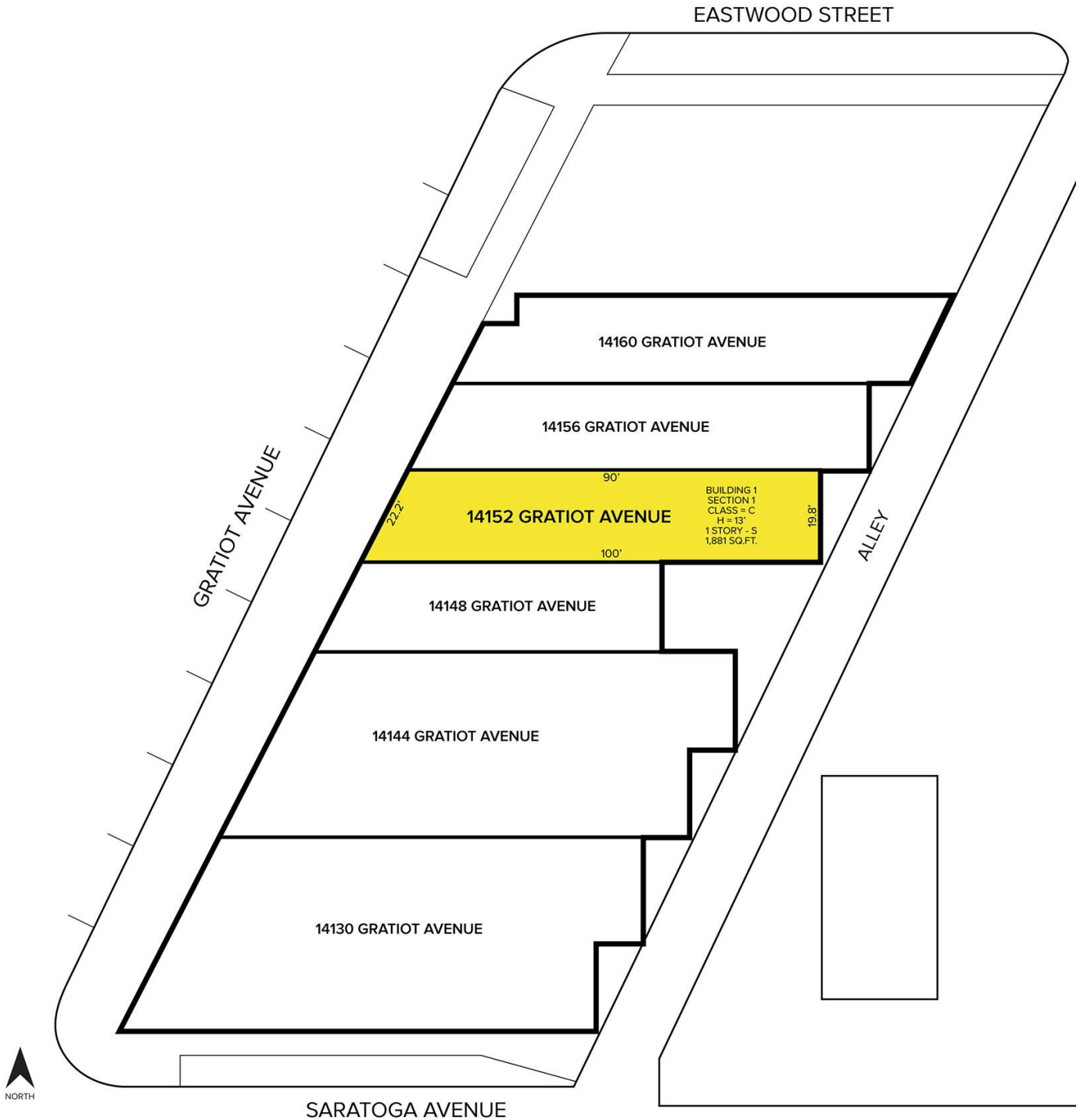
SIGNATURE ASSOCIATES
One Towne Square, Suite 1200
Southfield, MI 48076
www.signatureassociates.com

14152 Gratiot Avenue – Detroit, Michigan

Retail For Sale

1,881
Square Feet
AVAILABLE

Site Plan



For more information, please contact:

JOE STACK
(248) 359 0615
jstack@signatureassociates.com

BRUCE BAJA
(248) 799 3177
bbaja@signatureassociates.com

SIGNATURE ASSOCIATES
One Towne Square, Suite 1200
Southfield, MI 48076
www.signatureassociates.com

Information is subject to verification and no liability for errors or omissions is assumed. Price is subject to change and listing withdrawal.

14152 Gratiot Avenue – Detroit, Michigan

Retail For Sale

1,881
Square Feet
AVAILABLE



DEMOGRAPHICS

	POPULATION	MED. HH INCOME
1 MILE	16,120	\$45,571
3 MILE	144,234	\$47,098
5 MILE	375,424	\$60,984

TRAFFIC COUNTS (TWO-WAY)

14,648	7 Mile Rd. E. of Gratiot Ave.
11,663	7 Mile Rd. W. of Gratiot Ave.
33,048	Gratiot Ave. N. of 7 Mile Rd.
32,791	Gratiot Ave. S. of 7 Mile Rd.



For more information, please contact:

JOE STACK
(248) 359 0615
jstack@signatureassociates.com

BRUCE BAJA
(248) 799 3177
bbaja@signatureassociates.com

SIGNATURE ASSOCIATES
One Towne Square, Suite 1200
Southfield, MI 48076
www.signatureassociates.com